

VMware.2V0-622D.v2018-05-04.q110

Exam Code:	2V0-622D
Exam Name:	VMware Certified Professional 6.5 - Data Center Virtualization Delta Exam
Certification Provider:	VMware
Free Question Number:	110
Version:	v2018-05-04
# of views:	1250
# of Questions views:	61290
https://www.freecram.net/torrent/VMware.2V0-622D.v2018-05-04.q110.html	

NEW QUESTION: 1

An administrator has recently upgraded from vSphere 6.0 to 6.5, and can no longer see the software iSCSI named vmhba33.

Which could be the reason for this?

- A. The upgrade has changed the vmhba name.
- B. vSphere 6.5 automates iSCSI configurations.
- C. vSphere 6.5 no longer supports software iSCSI.
- D. The upgrade has deleted the vmhba.

Answer: (SHOW ANSWER)

Explanation/Reference:

Reference: http://pubs.vmware.com/Release_Notes/en/vsphere/65/vsphere-esxi-vcenter-server-65-release-notes.html

NEW QUESTION: 2

Which are two vCenter Server two-factor authentication methods? (Choose two.)

- A. RSA SecurID
- B. Smart Card
- C. SAML
- D. Symantec VIP

Answer: (SHOW ANSWER)

Explanation/Reference:

Reference:

<https://pubs.vmware.com/vsphere-60/index.jsp?topic=%2Fcom.vmware.vsphere.security.doc%2FGUID-ACFFCBEC-6C1C-4BF9-9971-04AEE9362AFE.html>

NEW QUESTION: 3

When installing vCenter Converter Standalone, why must an administrator perform a client-server installation instead of a local installation?

- A. to manage conversion tasks remotely
- B. to convert virtual machines as well as physical machines
- C. to allow installation of the Converter agent on remote source machines
- D. to hot clone physical or virtual machines

Answer: (SHOW ANSWER)

Explanation/Reference:

Reference:

https://www.vmware.com/pdf/convsa_61_guide.pdf

NEW QUESTION: 4

VCSA backup can be backed up and sent to different location vis several different protocols.

Which are three of the supported protocols? (Choose three.)

- A. CIFS
- B. SCP
- C. HTTP
- D. FTPS
- E. AFP

Answer: (SHOW ANSWER)

Explanation/Reference:

Reference:

<https://www.vladan.fr/vmware-vcsa-6-5-backup-and-restore-how-to/>

NEW QUESTION: 5

Which are two Storage DRS requirements? (Choose two.)

- A. Datastore clusters must have datastores of the same size and I/O capacities.
- B. NFS and VMFS datastores cannot be combined in the same datastore cluster.
- C. Datastores shared across multiple datacenters cannot be included in a datastore cluster.
- D. NFS and vSAN datastores can be combined in the same datastore clusters.
- E. A dedicated TCP/IP stack is required for datastore clusters.

Answer: (SHOW ANSWER)

Explanation/Reference:

Reference: <https://pubs.vmware.com/vsphere-55/index.jsp?topic=%2Fcom.vmware.vsphere.resmgmt.doc%2FGUID-34A10B42-C79E-491C-A5AA-99E3B5FA2278.html>

Explanation:

A datastore cluster can contain a mix of datastores with different sizes and I/O capacities, and can be from different arrays and vendors. However, the following types of datastores cannot coexist in a datastore cluster.

NFS and VMFS datastores cannot be combined in the same datastore cluster.

Datastores shared across multiple datacenters cannot be included in a dtastore cluster.

Reference:

<https://docs.vmware.com/en/VMware-vSphere/6.5/com.vmware.vsphere.resmgmt.doc/GUID-34A10B42-C79E-491C-A5AA-99E3B5FA2278.html>

NEW QUESTION: 6

A domain user is able to successfully log into the vSphere Web Client, but notices that the vCenter Server system does not appear in the inventory.

Which is the cause of this situation?

- A. The Service Control Agent service is not running.
- B. The vCenter Server does not have any hosts added to inventory yet.
- C. The domain user has read-only permissions on vCenter Server.
- D. The domain user does not have vCenter Server permissions.

Answer: ([SHOW ANSWER](#))

Explanation/Reference:

Explanation:

The vCenter Server system will not appear in the inventory if you do not have permissions on it. For example, if you log in as the vCenter Single Sign On administrator user, you might not have permissions on any vCenter Server system.

Reference:

<https://docs.vmware.com/en/VMware-vSphere/6.5/com.vmware.vsphere.troubleshooting.doc/GUID-B7662658-9C2C-4C6E-809B-F211B1B08157.html>

NEW QUESTION: 7

Which two permissions are required to migrate a virtual machine with Storage vMotion? (Choose two.)

- A. Network > Move Network
- B. Virtual Machine > Inventory > Move
- C. Resource > Migrate powered on virtual machine
- D. Datastore > Allocate Space

Answer: ([SHOW ANSWER](#))

Explanation/Reference:

Explanation:

You require these permissions to perform Storage vMotion from the Remote Command Line Interface (RCLI):

Resource > Migrate

▪

Resource > Relocate

▪

Datastore > Allocate Space

▪

Resource:

https://kb.vmware.com/selfservice/microsites/search.do?language=en_US&cmd=displayKC&externalId=1011345

NEW QUESTION: 8

Which is true when assigning global permissions in a single vSphere Single Sign-On domain in a multi-site configuration?

- A. Users assigned global permissions will be able to access objects and solutions across all Single Sign-On domains in an organization.
- B. Users assigned global permissions will be able to access objects and solutions only in the same Single Sign-On site.
- C. Users assigned global permissions will have administrator access across all objects and solutions in a Single Sign-On domain.
- D. Users assigned global permissions will be able to access objects and solutions within that Single Sign-On domain.

Answer: (SHOW ANSWER)

Explanation/Reference:

Explanation

Global permissions are applied to a global root object that spans solutions, for example, both vCenter Server and vCenter Orchestrator. Use global permissions to give a user or group privileges for all objects in all object hierarchies. Each solution has a root object in its own object hierarchy. The global root object acts as a parent object to each solution object. You can assign global permissions to users or groups, and decide on the role for each user or group. The role determines the set of privileges. You can assign a predefined role or create custom roles.

Reference <https://www.altaro.com/vmware/using-permissions-to-secure-vcenter-server/>

NEW QUESTION: 9

Which is required for configuring iSCSI Software Adapter network port binding?

- A. VMkernel of the iSCSI traffic must be load balanced using Route based on IP Hash algorithm.
- B. VMkernel of the iSCSI traffic must be load balanced using Route based on Source Virtual Port ID algorithm.
- C. VMkernel of the iSCSI traffic must be load balanced using Route based on Source MAC Hash algorithm.
- D. VMkernel of the iSCSI traffic must be bound to only one active network adapter.

Answer: (SHOW ANSWER)

Explanation/Reference:

Reference:

[https://kb.vmware.com/selfservice/microsites/search.do?](https://kb.vmware.com/selfservice/microsites/search.do?language=en_US&cmd=displayKC&externalId=2045040)

[language=en_US&cmd=displayKC&externalId=2045040](https://kb.vmware.com/selfservice/microsites/search.do?language=en_US&cmd=displayKC&externalId=2045040)

<https://docs.vmware.com/en/VMware-vSphere/6.5/com.vmware.vsphere.storage.doc/GUID-9C90F3F6-6095-427A-B20C-D46531E39D32.html>

NEW QUESTION: 10

Which is required for configuring iSCSI Software Adapter network port binding?

- A. VMkernel of the iSCSI traffic must be load balanced using Route based on Source Virtual Port ID algorithm.
- B. VMkernel of the iSCSI traffic must be load balanced using Route based on Source MAC Hash algorithm.
- C. VMkernel of the iSCSI traffic must be bound to only one active network adapter.
- D. VMkernel of the iSCSI traffic must be load balanced using Route based on IP Hash algorithm.

Answer: (SHOW ANSWER)

Explanation/Reference:

Reference:

<http://www.vmware.com/files/pdf/techpaper/vmware-multipathing-configuration-software-iSCSI-port-binding.pdf>

NEW QUESTION: 11

A working virtual machine (VM) is migrated to a new Port Group from an existing Port Group on the same switch. The VM loses network connectivity when the migration is completed.

Which could be a reason for the lack of connectivity for the VM?

- A. The new Port Group is not configured with the same VLAN ID as the existing Port Group.
- B. The Virtual Machine must be rebooted before the settings take effect.
- C. The new Port Group is not configured with the same name as the existing Port Group.
- D. The ESXi host must be rebooted before the settings take effect.

Answer: (SHOW ANSWER)

Explanation/Reference:

Explanation:

In order to migrate a new port group from an existing one on the same switch, you need to configure the same VLAN ID as the existing port group.

NEW QUESTION: 12

Which are four attributes of the Active vCenter HA node? (Choose four.)

- A. It uses the vCenter HA network to communicate with the Witness node.
- B. It constantly replicates vPostgres data with the Witness node.
- C. It uses a public IP address for the management interface.
- D. It runs the active vCenter Server Appliance instance.
- E. It uses the vCenter HA network for replication of data.
- F. It provides a quorum to protect against split-brain situations.

Answer: (SHOW ANSWER)

Explanation/Reference:

Explanation:

Active

- Runs the active vCenter Server Appliance instance
- Uses a public IP address for the management interface
- Uses the vCenter HA network for replication of data to the Passive node
- Uses the vCenter HA network to communicate with the Witness node

Reference: <https://pubs.vmware.com/vsphere-65/index.jsp?topic=%2Fcom.vmware.vsphere.avail.doc%2FGUID-2D395533-4C7C-45A6-9B5C-0A78C3E3A5C8.html>

NEW QUESTION: 13

Where would a vSphere administrator find general vCenter Server logs on a vCenter Server Appliance?

- A. /var/log/vmware/vpxd/
- B. /var/log/messages
- C. /etc/vmware-vpx/
- D. /var/log/vmware/vsan-health/

Answer: (SHOW ANSWER)

Explanation/Reference:

Explanation:

The VMware vCenter Server Appliance 6.0 logs are located in the /var/log/vmware/ folder.

vpxd/vpxd.log -> The main vCenter Serverlog

Reference: <https://kb.vmware.com/s/article/2110014>

NEW QUESTION: 14

A VM-Host affinity rule states that VM group "X" must run on hosts in group "Y".

If all ESXi hosts in group "Y" fail, which is the resulting behavior with vSphere HA enabled?

- A. The virtual machines in group "X" will failover to hosts that do not belong to group "Y", but will vMotion back to hosts in group "Y" when they become available.
- B. The virtual machines in group "X" will not failover to hosts that do not belong to group "Y".
- C. This scenario is not possible because vSphere HA and DRS cannot work together.
- D. The virtual machines in group "X" will only fail over to hosts that do not belong to group "Y" if they are marked as "High" VM Restart Priority within vSphere HA.

Answer: (SHOW ANSWER)

Explanation/Reference:

Reference:

<https://docs.vmware.com/en/VMware-vSphere/6.5/com.vmware.vsphere.avail.doc/GUID-1D8B1384-59A4-41E2-AF05-697FC06D9EF9.html>

NEW QUESTION: 15

Which two components are necessary for the first boot of a host using Auto Deploy? (Choose two.)

- A. Host Profiles

- B. Bulk licensing
- C. vSphere Authentication Proxy
- D. TFTP
- E. DHCP

Answer: (SHOW ANSWER)

Explanation/Reference:

Reference:

<https://docs.vmware.com/en/VMware-vSphere/6.0/com.vmware.vsphere.install.doc/GUID-8C221180-8B56-4E07-88BE-789B25BA372A.html>

NEW QUESTION: 16

An administrator wants to ensure that any virtual machine added to a certain port group always has sufficient network resources. Network I/O Control version 3 has been enabled on the Distributed Switch. Which three steps will achieve this objective? (Choose three.)

- A. Reserve bandwidth for virtual machine system traffic on the Distributed Switch Port Group.
- B. Edit the virtual machine's Resource settings and set a reservation for virtual machine system traffic.
- C. Create a Network Resource Pool on the Distributed Switch and set a reservation quota.
- D. Reserve bandwidth for virtual machine system traffic on the Distributed Switch.
- E. Add the Network Resource Pool on the Distributed Switch Port Group.

Answer: (SHOW ANSWER)

Explanation/Reference:

Reference:

<https://docs.vmware.com/en/VMware-vSphere/6.5/com.vmware.vsphere.networking.doc/GUID-E333032F-C292-4351-8318-C201F0579846.html#GUID-E333032F-C292-4351-8318-C201F0579846>

Valid 2V0-622D Dumps shared by ExamDiscuss.com for Helping Passing 2V0-622D Exam!

ExamDiscuss.com now offer the **newest 2V0-622D exam dumps**, the ExamDiscuss.com 2V0-622D exam **questions have been updated** and **answers have been corrected** get the **newest** ExamDiscuss.com 2V0-622D dumps with Test Engine here:

<https://www.examdiscuss.com/VMware/exam/2V0-622D/premium/> (270 Q&As Dumps, **35%OFF**)

Special Discount Code: freecram)

NEW QUESTION: 17

An administrator is troubleshooting network communications between a vCenter Server and an ESXi 6.5 host.

Which log shows the related events between these components?

- A. /var/log/fdm.log
- B. /var/log/vpxa.log
- C. /var/log/hostd.log

D. /var/log/auth.log

Answer: B (LEAVE A REPLY)

Explanation/Reference:

Reference: https://pubs.vmware.com/vsphere-50/index.jsp?topic=%2Fcom.vmware.wssdk.pg.doc_50%2FPG_ChA_Diagnostics.19.3.html

NEW QUESTION: 18

An administrator wishes to enable network port mirroring based on source port. Which feature should be enabled?

A. vSphere standard switch port

B. ERSPAN

C. NSX Virtual Wire

D. VLAN

Answer: (SHOW ANSWER)

Explanation/Reference:

Reference:

<https://docs.vmware.com/en/VMware-vSphere/6.5/com.vmware.vsphere.networking.doc/GUID-81309F10-D7FF-447C-9D35-58CA3DDA53B1.html>

NEW QUESTION: 19

When migrating a Windows vCenter Server 6.0 to the vCenter Server Appliance 6.5, which two will be migrated by default? (Choose two.)

A. Local Windows OS users and groups

B. Configuration

C. Custom ports

D. FQDN

E. Historical and Performance data

Answer: (SHOW ANSWER)

Explanation/Reference:

Explanation:

Not correct:

A) Local Windows OS users and groups are not migrated to the Photon OS of the vCenter Server Appliance

6.5.

C) Migration of deployments that use custom ports for services other than Auto Deploy, Update Manager, and vSphere ESXi Dump Collector are not supported.

E) By default, the configuration and inventory data of the Windows vCenter Server is migrated. The option to copy historical and performance data is also available.

Reference:

<https://blogs.vmware.com/vsphere/2017/01/vcenter-server-appliance-6-5-migration-walkthrough.html>

NEW QUESTION: 20

Which are the three supported backup types for the vCenter Server Appliance 6.5? (Choose three.)

- A. File-Based Backup
- B. vSphere Storage APIs-Data Protection
- C. Replication
- D. Snapshots
- E. vSphere Data Protection

Answer: (SHOW ANSWER)

Explanation/Reference:

Explanation:

vCenter server appliance supports file-based backup and image-based backups. It also supports snapshots and vsphere data protection process.

Reference:

[https://kb.vmware.com/s/article/2149237?](https://kb.vmware.com/s/article/2149237?r=2&Quarterback.validateRoute=1&KM_Utility.getArticleData=1&KM_Utility.getGUser=1&KM_Utility.getArticleLanguage=2&KM_Utility.getArticle=1)

[r=2&Quarterback.validateRoute=1&KM_Utility.getArticleData=1&KM_Utility.getGUser=1&KM_Utility.getArticleLanguage=2&KM_Utility.getArticle=1](https://kb.vmware.com/s/article/2149237?r=2&Quarterback.validateRoute=1&KM_Utility.getArticleData=1&KM_Utility.getGUser=1&KM_Utility.getArticleLanguage=2&KM_Utility.getArticle=1)

NEW QUESTION: 21

An administrator is attempting to enable Fault Tolerance on a virtual machine but the operation does not complete successfully.

Which could be two reasons for this? (Choose two.)

- A. The virtual machine has more than 1 vCPU.
- B. The virtual machine has uncommitted snapshots.
- C. vSphere HA is disabled for this virtual machine.
- D. The virtual machine is located on vSAN storage.
- E. The virtual machine has over 32GB of memory assigned.

Answer: (SHOW ANSWER)

Explanation/Reference:

Explanation:

A number of validation checks are performed on a virtual machine before Fault Tolerance can be turned on.

SSL certificate checking must be enabled in the vCenter Server settings.

▪ The host must be in a VMware HA cluster or a mixed VMware HA and DRS cluster.

▪ The host must have ESX/ESXi 4.0 or greater installed.

▪ The virtual machine must not have multiple vCPUs.

▪ The virtual machine must not have snapshots.

▪ The virtual machine must not be a template.

▪ The virtual machine must not have VMware HA disabled.

Reference:

https://pubs.vmware.com/vsphere-4-esx-vcenter/index.jsp?topic=/com.vmware.vsphere.availability.doc_40/c_turn_on_ft.html

NEW QUESTION: 22

An administrator notices that a host is evacuating all virtual machines and entering maintenance mode even though the host appears to be up and running.

Which new feature in vSphere 6.5 would cause this?

- A. Predictive DRS
- B. EVC Mode
- C. vCenter HA
- D. Proactive HA

Answer: (SHOW ANSWER)

Explanation/Reference:

Explanation:

There are two vSphere Proactive HA Automation Levels:

Manual: vCenter Server will suggest only the migration recommendations for virtual machines. You need to manually migrate the virtual machines out from the degraded hosts.

Automated: Virtual Machines will be migrated to healthy hosts and degraded hosts will be entered into remediation action either quarantine or maintenance mode depending on the configured Proactive HA automation level

Reference:

<http://www.vmwarearena.com/vsphere-6-5-high-availability-new-features-proactive-ha/>

NEW QUESTION: 23

When moving a virtual machine's virtual disks from Datastore Cluster A to Datastore Cluster B, which two options should be considered? (Choose two.)

- A. Any Inter-VM or Intra-VM Anti-Affinity rules that existed for the virtual disks in Datastore Cluster A will not be carried over into the new Datastore Cluster.
- B. The virtual machine's virtual disks will be placed by default onto the same datastore within Datastore Cluster B.
- C. If the virtual machine's virtual disks have anti-affinity rules in Datastore Cluster A, they must be deleted before the virtual disks can be moved into Datastore Cluster B.
- D. The virtual machine needs to be powered off before moving its virtual disks from Datastore Cluster A to Datastore Cluster B.
- E. Any Inter-VM or Intra-VM Anti-Affinity rules that existed for the virtual disks in Datastore Cluster A will stay with the virtual disks once they have moved to Datastore Cluster B.

Answer: (SHOW ANSWER)

Explanation/Reference:

Reference:

<https://pubs.vmware.com/vsphere-51/index.jsp?topic=%2Fcom.vmware.vsphere.resmgmt.doc%2FGUID-FC84ECD9-C7DA-4D27-B5EC-0C8E396A6800.html>

NEW QUESTION: 24

Which is the minimum number of hosts required for a VMware vSAN cluster to be able to apply a vSAN RAID5 storage policy?

- A. six hosts
- B. three hosts
- C. four hosts
- D. five hosts

Answer: (SHOW ANSWER)

Explanation/Reference:

Reference:

<https://cormachogan.com/2016/02/15/vsan-6-2-part-2-raid-5-and-raid-6-configurations/>

NEW QUESTION: 25

A company has requested that a plan for Auto Deploy be built using VMware-recommended best practices for networking.

Which two considerations adhere to VMware-recommended networking best practices for Auto Deploy? (Choose two.)

- A. Using IPv4 as Auto Deploy will be able to boot hosts with a legacy BIOS.
- B. Using DHCP reservations for address allocations because providing fixed IP addresses through host customization is not supported.
- C. Using VLANs on the management network as it offers increased performance while hosts are booting.
- D. Using IPv6 as Auto Deploy will be able to boot hosts with a legacy BIOS and UEFI.
- E. Using DHCP reservations for address allocations because providing fixed IP addresses through host customization is not recommended.

Answer: (SHOW ANSWER)

Explanation/Reference:

Explanation:

PXE booting with legacy BIOS firmware is possible only over IPv4. PXE booting with UEFI firmware is possible with either IPv4 or IPv6.

Use DHCP reservations for address allocation. Fixed IP addresses are supported by the host customization mechanism, but providing input for each host is not recommended Reference:

<https://docs.vmware.com/en/VMware-vSphere/6.5/com.vmware.vsphere.install.doc/GUID-980D9E38-633E-4557-9144-AC422FA239C5.html>

NEW QUESTION: 26

When enabling Storage DRS on a datastore cluster, which three components are enabled as a result? (Choose three.)

- A. Space load balancing among datastore within the datastore cluster.

- B. Initial placement for virtual disks based on space and I/O workload.
- C. I/O load balancing among datastores within the datastore cluster.
- D. Queue Depth alerting on disks within the datastore cluster.
- E. Data de-duplication within the datastore cluster.

Answer: A,B,C (LEAVE A REPLY)

Explanation/Reference:

Explanation:

When you enable Storage DRS, you enable the following functions:

Space load balancing among datastores within a diastole cluster

I/O load balancing among datastores within a diastole cluster

Initial placement for virtual disks based on space and I/O workload.

Reference:

<https://pubs.vmware.com/vsphere-51/index.jsp?topic=%2Fcom.vmware.vsphere.resmgmt.doc%2FGUID19B6F05F-D285-4ACB-9B13-24A1DE9B4058.html>

NEW QUESTION: 27

It is determined that the Migration Assistant will be used to migrate from vCenter Server 5.5 on Windows with an external instance of Update Manager to a vCenter Server Appliance 6.5.

Which option is correct in regard to migrating Update Manager?

- A. The Migration Assistant must be run on vCenter Server first and then on the Update Manager server.
- B. The Migration Assistant must be run on the Update Manager server first and then on vCenter Server.
- C. Migrating Update Manager from legacy versions of vCenter Server to a vCenter Server Appliance 6.5 is not supported.
- D. The Migration Assistant can only migrate local instances of Update Manager to the vCenter Server Appliance 6.5.

Answer: (SHOW ANSWER)

Explanation/Reference:

Reference:

https://docs.vmware.com/en/VMware-vSphere/6.5/com.vmware.vsphere.update_manager.doc/GUID-189A0050-1680-42A3-A13E-8FDCBE9FB03F.html

NEW QUESTION: 28

To enable Predictive DRS, which three steps must be taken? (Choose three.)

- A. vRealize Log Insight must be enabled and configured to watch for Predictive DRS moves.
- B. The corresponding virtual machines must be tagged for predictive DRS use.
- C. A supported version of vRealize Operations Manager must be configured and enabled.
- D. The predictive DRS check box must be enabled.
- E. DRS must be enabled.

Answer: (SHOW ANSWER)

Explanation/Reference:

Reference: <https://docs.vmware.com/en/vRealize-Operations-Manager/6.4/com.vmware.vcom.core.doc/GUID-D830E36D-08A3-4D1A-87EC-0EC6217D1761.html>

NEW QUESTION: 29

Which do Protocol Endpoints refer to?

- A. a VASA provider
- B. a pool of raw storage capacity that spans different physical arrays
- C. a Virtual Volumes datastore
- D. a logical I/O proxy of the physical storage fabric

Answer: (SHOW ANSWER)

Explanation/Reference:

Reference:

<https://docs.vmware.com/en/VMware-vSphere/6.0/com.vmware.vsphere.storage.doc/GUID-D65C0EBF-9E8B-45B5-964C-5CD5FD170BB9.html>

NEW QUESTION: 30

When upgrading a standalone vCenter Single Sign-On Server version 5.5 to version 6.5, which will be the final deployment type?

- A. There is no option to do this type of upgrade.
- B. It will be an external Platform Services Controller.
- C. It will be an embedded Platform Services Controller with vCenter Server
- D. It will be a Standalone vCenter Server.

Answer: (SHOW ANSWER)

Explanation/Reference:

Explanation

You can upgrade an externally deployed vCenter Single Sign-On 5.5 to an externally deployed Platform Services Controller 6.5 instance by using the vCenter Server for Windows installer.

Reference <https://docs.vmware.com/en/VMware-vSphere/6.5/com.vmware.vsphere.upgrade.doc/GUID-A94C1617-5F15-402A-B462-1AC6A041C73E.html>

NEW QUESTION: 31

Which action can the Hybrid Cloud Manager perform?

- A. It can migrate virtual machines with vMotion between vCenter Servers with distinct Single Sign-on domains.
- B. It can manage vCloud Air and Amazon Web Services (EC2) from a single interface.
- C. It can migrate the virtual machines with vMotion between AWS, Azure, and vCloud Air.
- D. It can move a virtual machine from vCloud Air to on premises vSphere.

Answer: (SHOW ANSWER)

Explanation/Reference:

Reference: <http://www.vmware.com/cloud-services/management/vcloud-air-hybrid-cloud-manager.html>

Valid 2V0-622D Dumps shared by ExamDiscuss.com for Helping Passing 2V0-622D Exam!
ExamDiscuss.com now offer the **newest 2V0-622D exam dumps**, the ExamDiscuss.com 2V0-622D exam **questions have been updated** and **answers have been corrected** get the **newest** ExamDiscuss.com 2V0-622D dumps with Test Engine here:
<https://www.examdiscuss.com/VMware/exam/2V0-622D/premium/> (270 Q&As Dumps, **35%OFF** Special Discount Code: **freecram**)

NEW QUESTION: 32

The administrator set Local OS as the default identity source of vCenter Single Sign-On. A user named "user1" belongs to domain "mydomain" and tries to log in to vCenter Single Sign-On.

Which two user names are appropriate to use for login? (Choose two.)

- A. user1\mydomain
- B. mydomain@user1
- C. mydomain\user1
- D. user1@vsphere.local
- E. user1@mydomain

Answer: (SHOW ANSWER)

Explanation/Reference:

Reference:

<https://docs.vmware.com/en/VMware-vSphere/5.5/com.vmware.vsphere.security.doc/GUID-A2A90265-4A6B-4E23-9681-97B867E55457.html>

NEW QUESTION: 33

In vSphere Data Protection 6.1, which is the function of a Backup Verification job?

- A. None. Backup Verification job is not a feature of vSphere Data Protection
- B. It is a manual task
 - Power it on
 - Verify the guest OS
 - Check started applications
- C. It is an automatic process
 - Restore a virtual machine
 - Power it on
 - Verify that the guest OS is booted by communicating with the Backup Verification agent
- D. It is an automatic process
 - Restore a virtual machine
 - Power it on
 - Verify that the guest OC is booted by detecting the VMware Tools™ "heartbeats"

Answer: (SHOW ANSWER)

Explanation/Reference:

Explanation:

Automated Backup Verification

Backup Verification jobs can be created in vSphere Data Protection. These jobs automate the process of restoring a virtual machine: powering it on; verifying the guest OS booted, by detection of VMware Tools "heartbeats".

Reference: <https://www.vmware.com/content/dam/digitalmarketing/vmware/en/pdf/vsphere/vmware-vsphere-data-protection-overview.pdf> page 11

NEW QUESTION: 34

Which component must be deployed before using encrypted virtual machines in a vSphere 6.5 environment?

- A. vCenter Server must use CA signed certificates
- B. a host with supported Trusted Platform Module
- C. supported password vault
- D. External Key Management Server

Answer: (SHOW ANSWER)

Explanation/Reference:

Reference:

<https://docs.vmware.com/en/VMware-vSphere/6.5/com.vmware.vsphere.security.doc/GUID-E6C5CE29-CD1D-4555-859C-A0492E7CB45D.html>

NEW QUESTION: 35

Which are the two storage options for a Content Library when using the VMware vCenter Appliance? (Choose two.)

- A. FTP
- B. NFS
- C. CIFS
- D. VMFS

Answer: (SHOW ANSWER)

Explanation/Reference:

Reference: https://docs.vmware.com/en/VMware-vSphere/6.5/com.vmware.vsphere.vm_admin.doc/GUID-2A0F1C13-7336-45CE-B211-610D39A6E1F4.html

NEW QUESTION: 36

An administrator would like to configure vSphere HA to use two isolation addresses.

How would this affect the behavior of HA?

- A. If both isolation addresses are not reachable, the host will be restarted by the HA agent.
- B. If both isolation addresses are not reachable, the host will use the vCenter Server IP address as a final isolation address before being marked isolated.
- C. If only one of the isolation addresses is reachable, the host will not be marked isolated by HA.

D. If only one of the isolation addresses is reachable, the host will be considered in an isolated by HA.

Answer: C (LEAVE A REPLY)

Explanation/Reference:

Explanation:

if you use two isolation addresses, and if only one of the isolation addresses is reachable, the host will not be marked isolated by HA.

NEW QUESTION: 37

Which is the correct order for upgrading vSphere components?

- A. vCenter Server, ESXi hosts, VMware Tools, Virtual Machine hardware
- B. VMware Tools, Virtual Machine hardware, ESXi hosts, vCenter Server
- C. vCenter Server, Virtual Machine hardware, VMware tools, ESXi hosts
- D. ESXi hosts, vCenter Server, Virtual Machine hardware, VMware Tools

Answer: (SHOW ANSWER)

Explanation/Reference:

Explanation:

Correct order is:

- 1 Back up your configuration
- 2 Upgrade vCenter Server
- 3 Upgrade ESXi hosts
- 4 Upgrade virtual machines and virtual appliances

Reference:

<https://docs.vmware.com/en/VMware-vSphere/6.5/vsphere-esxi-vcenter-server-65-upgrade-guide.pdf>

NEW QUESTION: 38

An administrator has upgraded to vSphere 6.5 and also wants to use Kerberos authentication for NFS. Which can be done to the existing NFSv3 volumes to enable this feature?

- A. Perform a storage rescan on VMFS volumes.
- B. Unmount the NFSv3 datastore, and then mount as NFSv4.1 datastore.
- C. Nothing. All NFSv3 mounted datastores are upgraded automatically during vSphere upgrades.
- D. Perform a scan of new storage devices.

Answer: (SHOW ANSWER)

Explanation/Reference:

Explanation:

vSphere does not support automatic datastore conversions from NFS version 3 to NFS 4.1. If you want to upgrade your NFS 3 datastore, the following options are available:

You can create a new NFS 4.1 datastore, and then use Storage vMotion to migrate virtual machines from the old datastore to the new one.

Use conversion methods provided by your NFS storage server.

Unmount from one version and then mount as the other

NEW QUESTION: 39

A vSphere administrator upgraded vCenter Server (VC) from version 5.5 to 6.5. Existing VMFS5 datastores consumption is 75% full. All of the ESXi hosts have been upgraded to version 6.5. Existing datastores have not yet been upgraded.

Which is VMware's recommended approach to upgrading each VMFS5 datastore to VMFS6?

- A. The option to upgrade datastores to VMFS6 is only available during the ESXi host upgrade process.
- B. Log on one ESXi host at a time using vSphere 6.5 Windows Client Navigate to the datastores view. Right-click on the VMFS5 datastore, and then select upgrade to VMFS6.
- C. Log on to VC using vSphere 6.5 Web Client. Navigate to the datastores view. Right-click on the VMFS5 datastore, and then select upgrade to VMFS6.
- D. Log on to VC using vSphere 6.5 Web Client. Create a VMFS6 datastore on a new LUN. Use storage vMotion to migrate the data to the new datastore.

Answer: (SHOW ANSWER)

Explanation/Reference:

Explanation:

Perform version check for the vCenter Server and all ESX hosts.

Note: All ESXi hosts and vCenter Server must be of vSphere 6.5. Do not proceed if any one of ESXi hosts is not vSphere 6.5. Proceeding further means business continuity loss and the new datastore is not visible in old ESX hosts.

Perform all pre checks for free space availability on datastore DS-2. Available space on DS-2 must be equal or more than the datastore DS-1 space.

Ensure that the datastore DS-2 is VMFS 6 type.

Prepare list of all virtual machines in the vCenter Server's inventory that are hosted on datastore DS-1.

Evacuate the datastore DS-1. For this, migrate all the virtual machines running from datastore DS-1 to datastore DS-2. Storage vMotion operations are performed on these virtual machines.

Perform one migration at a time to avoid disrupting the performance of remaining datacenter entities.

Keep track of any migration failures, if any, re-trigger the migration for those virtual machines.

Ensure that datastore DS-1 is empty by listing files on this datastore.

Note: Proceed further only if datastore DS-1 is empty.

Unmount datastore DS-1 from all ESX hosts.

Delete datastore DS-1.

Create a new datastore with the VMFS 6 filesystem using the same lun. For example, DS-1.

Trigger a storage rescan operation on all hosts and wait for few minutes for this operation to complete.

Move all virtual machines back to datastore DS-1 from datastore DS-2 by performing storage vMotion operation. It is suggested to migrate one virtual machine at a time. Keep track of any migration failures, if any, re-trigger migration for those virtual machines.

Reference:

<https://kb.vmware.com/s/article/2147824>

NEW QUESTION: 40

An administrator has multiple vCenter Server 6.5 systems but cannot enable Storage I/O Control (SIOC) on a datastore shared by ESXi hosts managed by the vCenter Server systems. Which action should the administrator take to resolve the issue?

- A. Unmount the datastore and then enable SIOC on the vCenter Server system.
- B. Configure the datastore to be managed by a single vCenter Server system.
- C. Configure Storage DRS and then enable SIOC on the vCenter Server system.
- D. Enable Raw Device Mapping (RDM) on the ESXi hosts.

Answer: (SHOW ANSWER)

Explanation/Reference:

Explanation:

Before enabling SIOC, ensure that datastores are managed by a single vCenter Server.

Reference:

<https://docs.vmware.com/en/VMware-vSphere/6.5/com.vmware.vsphere.resmgmt.doc/GUID-37CC0E44-7BC7-479C-81DC-FFFC21C1C4E3.html>

NEW QUESTION: 41

Which are three supported storage requirements for vCenter Server HA? (Choose three.)

- A. NFS
- B. RDM
- C. vSAN
- D. VMFS
- E. JBOD

Answer: A,C,D (LEAVE A REPLY)

Explanation/Reference:

Explanation:

vCenter HA is supported and tested with VMFS, NFS, and vSAN datastores.

Reference:

<https://docs.vmware.com/en/VMware-vSphere/6.5/com.vmware.vsphere.avail.doc/GUID-8FD87389-8CC9-4298-8B08-A1526FB44524.html>

NEW QUESTION: 42

Which iSCSI initiator type can be used with any network interface card?

- A. Software iSCSI initiator
- B. Software FCoE adapter
- C. Hardware Independent iSCSI initiator
- D. Hardware Dependent iSCSI initiator

Answer: (SHOW ANSWER)

Explanation/Reference:

Explanation:

A software iSCSI adapter is a VMware code built into the VMkernel. It allows your host to connect to the iSCSI storage device through standard network adapters. The software iSCSI adapter handles iSCSI processing while communicating with the network adapter. With the software iSCSI adapter, you can use iSCSI technology without purchasing specialized hardware.

Reference <https://docs.vmware.com/en/VMware-vSphere/5.5/com.vmware.vsphere.storage.doc/GUID-7A4E3767-CB54-4E88-9BA8-298876119465.html>

NEW QUESTION: 43

Which three prerequisites must be in place prior to enabling secure boot for a virtual machine? (Choose three.)

- A. VirtualMachine.Config.Settings privileges
- B. an encrypted USB drive
- C. Virtual Hardware version 13 or later
- D. Virtual Hardware version 12 or later
- E. EFI firmware

Answer: (SHOW ANSWER)

Explanation/Reference:

Reference:

<https://pubs.vmware.com/vsphere-65/index.jsp?topic=%2Fcom.vmware.vsphere.security.doc%2FGUID-898217D4-689D-4EB5-866C-888353FE241C.html>

NEW QUESTION: 44

When performing a vCenter Server 5.5 for Windows with Microsoft SQL Server Express database migration to vCenter Server Appliance 6.5, which will be the target database?

- A. Microsoft SQL Server Express 2012R2
- B. Microsoft SQL Server Standard 2012R2
- C. PostgreSQL
- D. Oracle DB 11g

Answer: (SHOW ANSWER)

Explanation/Reference:

Explanation:

To perform vcenter server 5.5 for Windows with Microsoft SQL server express database migration to vcenter server appliance 6.5, you need PostgreSQL database installation on Windows.

Reference:

<https://docs.vmware.com/en/VMware-vSphere/6.5/vsphere-esxi-vcenter-server-65-upgrade-guide.pdf>

NEW QUESTION: 45

Which is the block size on the VMFS6 datastore?

- A. All small and large file blocks are 8MB.
- B. All small and large file blocks are 1MB.
- C. Small file blocks are 512KB. large file blocks are 64MB.

D. Small file blocks are 1MB, large file blocks are 512MB.

Answer: (SHOW ANSWER)

Explanation/Reference:

Reference:

<https://docs.vmware.com/en/VMware-vSphere/6.5/vsphere-esxi-vcenter-server-65-storage-guide.pdf>

NEW QUESTION: 46

An administrator is attempting to power on a virtual machine with 32GB of memory. The operation fails with the following error:

Could not power on VM : No space left on device

Checking the space on the virtual machine's datastore, there is 30GB free.

Which action would allow the VM to power on?

A. Set a 2GB memory reservation on the VM.

B. Mount the virtual disk from the affected VM on to another virtual machine and free up space from within the OS.

C. Enable vSphere HD admission control on the cluster in which the VM resides.

D. Set a 2GB memory limit on the VM.

Answer: (SHOW ANSWER)

Explanation/Reference:

Explanation:

The swap file size can be calculated with the formula (.vswp File = Allocated Memory - Memory Reservation).

As per default, the reservation is set to 0, so the .vswp file size is equal to the amount of virtual memory.

Valid 2V0-622D Dumps shared by ExamDiscuss.com for Helping Passing 2V0-622D Exam!

ExamDiscuss.com now offer the **newest 2V0-622D exam dumps**, the ExamDiscuss.com 2V0-622D exam **questions have been updated** and **answers have been corrected** get the **newest** ExamDiscuss.com 2V0-622D dumps with Test Engine here:

<https://www.examdiscuss.com/VMware/exam/2V0-622D/premium/> (270 Q&As Dumps, **35%OFF**

Special Discount Code: freecram)

NEW QUESTION: 47

A new virtual machine cannot reach its default gateway.

-The vSphere administrator checks that the virtual machine's vmnic is connected to the correct portgroup, and that the portgroup is on the correct virtual switch

-This is the only virtual machine on this portgroup

-Other virtual machines that are on the host and connected to the same Distributed switch are running as normal

-The Distributed Switch has only one uplink

Which could be the cause of this issue?

- A. Block All Ports has been selected on the Distributed Switch.
- B. The wrong VLAN ID has been added to the portgroup.
- C. The VLAN has not been configured in virtual machine hardware settings.
- D. The physical adapter is down.

Answer: (SHOW ANSWER)

Explanation/Reference:

Explanation:

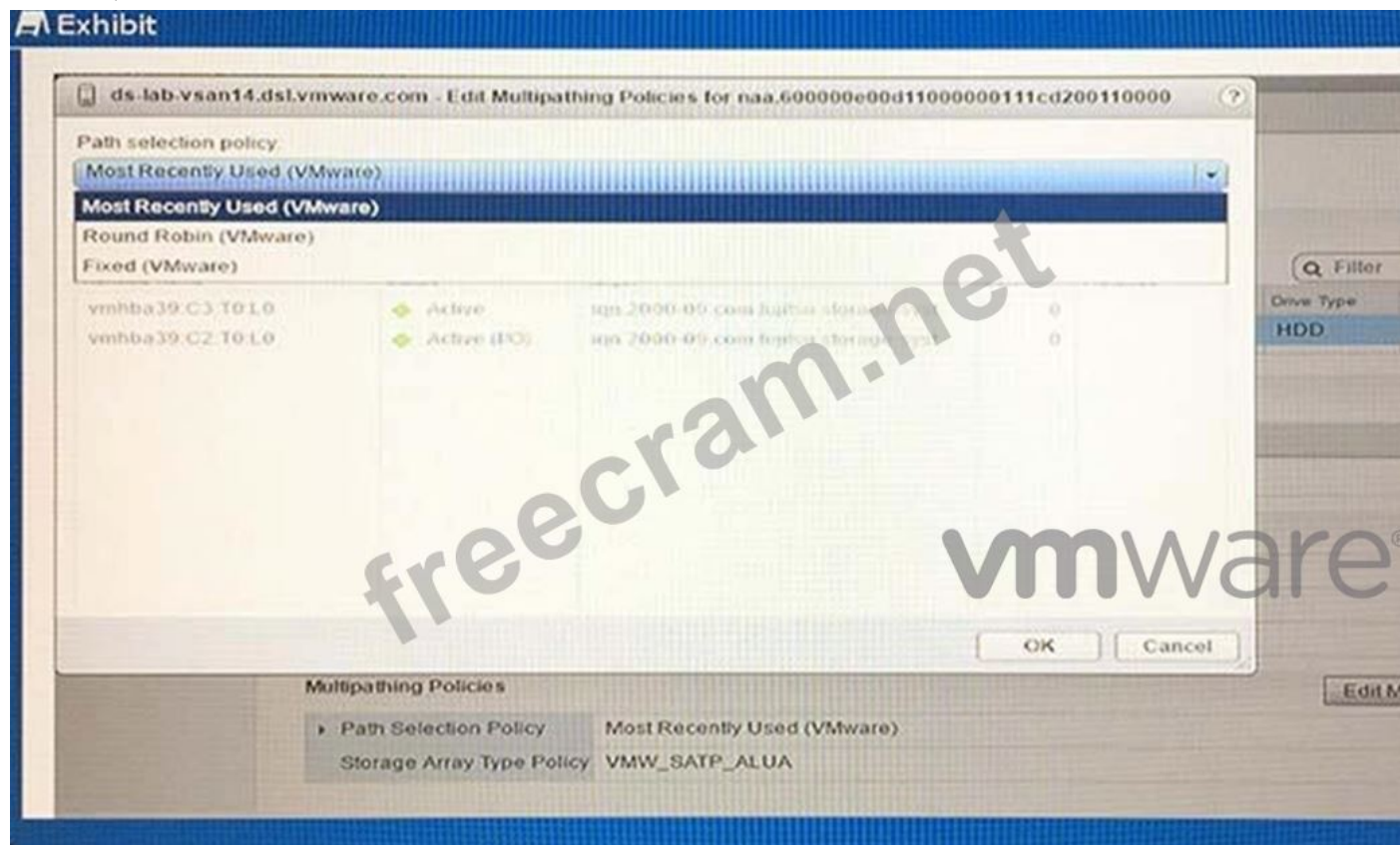
The default gateway is an entry point and an exit point in a virtual machine sub-net, VLAN, or network. In general, a gateway is a routing device that knows how to pass traffic between different subnets and networks.

Layer 2 and layer 3 switches with VLAN configuration allow IP assignment to each VLAN that will be used as default gateway as for that particular VLAN. A router contains routes for other subnets. Therefore, the problem occurs when wrong VLAN ID is added to the portgroup.

Reference:

<https://kb.vmware.com/s/article/1007910>

NEW QUESTION: 48



Examine the LUN properties that are shown in the exhibit.

Which action should be taken to utilize all active paths?

- A. Change PSP to Most Recently Used
- B. No action required. All paths are already utilized.
- C. Change PSP to Fixed.

D. Change PSP to Round Robin.

Answer: ([SHOW ANSWER](#))

Explanation/Reference:

Explanation:

The host uses an automatic path selection algorithm rotating through all active paths when connecting to active-passive arrays, or through all available paths when connecting to active-active arrays. RR is the default for a number of arrays and can be used with both active-active and active-passive arrays to implement load balancing across paths for different LUNs.

Reference:

<https://docs.vmware.com/en/VMware-vSphere/6.0/com.vmware.vsphere.storage.doc/GUID-37F97D1C-4E4F-460B-ACF9-04D1347959CC.html>

NEW QUESTION: 49

An administrator notices that a virtual machine running SQL Server is not performing as expected. Upon checking the logs, the administrator sees the following error:

vmware.log> vmx| W110: NUMA and VCPU hot add are incompatible. Forcing UMA How can the administrator resolve this issue?

- A.** Power off the virtual machine and disable vCPU hot plug.
- B.** Reinstall VMware Tools.
- C.** Modify the .vmx file to force NUMA and vCPU hot add to function.
- D.** Installation third party plug-in to enable NUMA and vCPU hot add to function.

Answer: ([SHOW ANSWER](#))

Explanation/Reference:

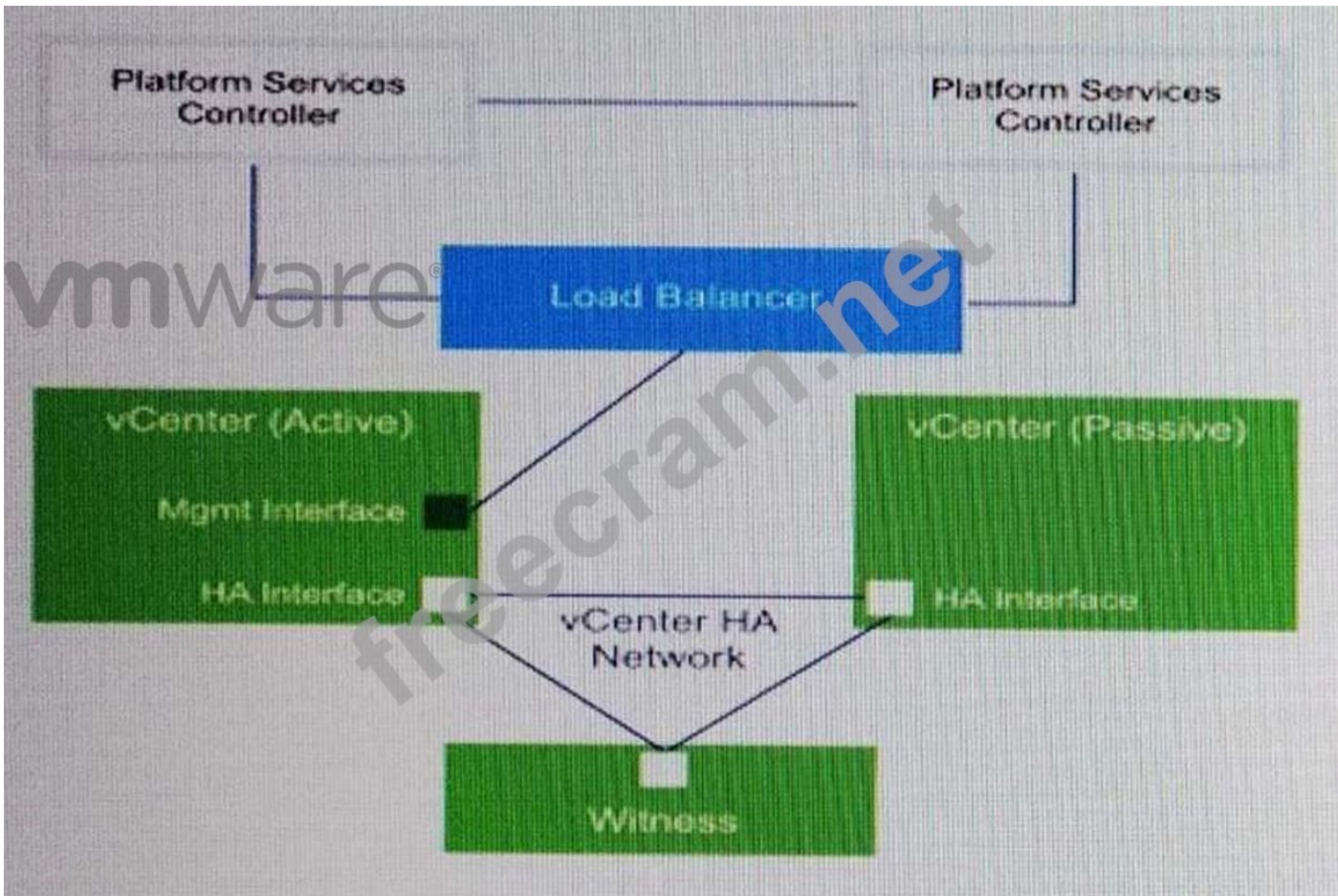
Reference:

https://kb.vmware.com/selfservice/microsites/search.do?language=en_US&cmd=displayKC&externalId=204037

NEW QUESTION: 50

View the Exhibit. The exhibit represents a vCenter HA with external Platform Services Controllers in a highly available deployment.

How many vCenter Server 6.5 licenses are required?



- A. 5
- B. 3
- C. 2
- D. 1

Answer: (SHOW ANSWER)

Explanation/Reference:

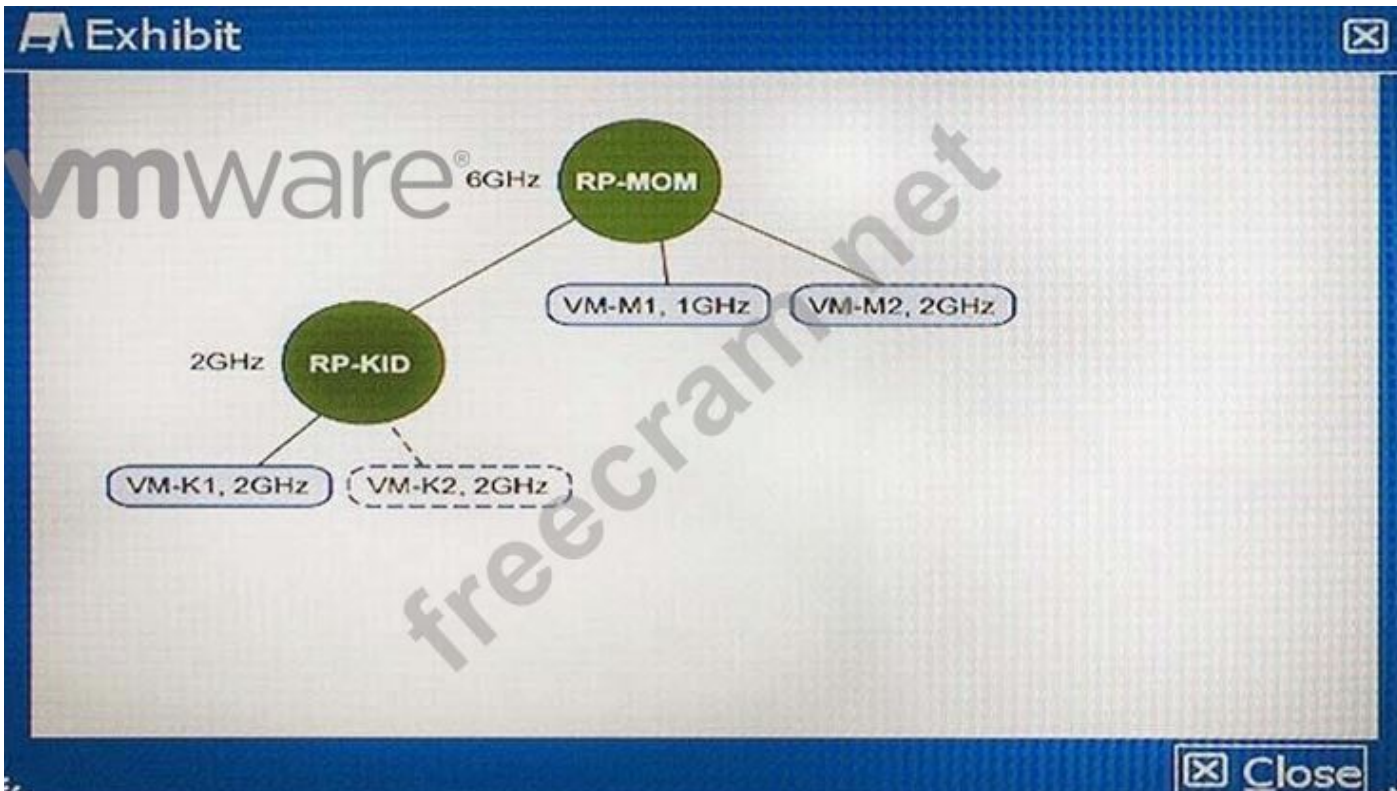
Reference:

<https://docs.vmware.com/en/VMware-vSphere/6.5/com.vmware.vsphere.avail.doc/GUID-8FD87389-8CC9-4298-8B08-A1526FB44524.html>

NEW QUESTION: 51

The administrator wants to power on VM-K2, which has a 2GHz CPU reservation. VM-M1, VM-M2, and VM-K1 are all powered on. VM-K2 is not powered on.

The exhibit shows the parent and child resource reservations.



If Resource Pool RP-KID is configured with an expandable reservation, which statement is true?

- A. VM-K2 will be unable to power on because there are insufficient resources.
- B. VM-K2 will be able to power on since resource pool RP-KID has 2GHz available.
- C. VM-K2 will be unable to power on because only 2GHz are reserved for RP-KID.
- D. VM-K2 will receive resource priority and will be able to power on this scenario.

Answer: (SHOW ANSWER)

Explanation/Reference:

Reference:

<https://docs.vmware.com/en/VMware-vSphere/6.5/com.vmware.vsphere.resmgmt.doc/GUID-8D813BB8-CE07-40F2-B2CA-269C1FB39475.html>

NEW QUESTION: 52

Which two requirements must be met before enabling vSphere HA Application Monitoring for a virtual machine? (Choose two.)

- A. VMware Tools must be installed on the VM.
- B. The vSphere Guest SDK must be installed on the VMs needing Application Monitoring.
- C. Application Monitoring requires that vCenter Server is linked to a working instance of vRealize Operations Manager and the End Points Operations agent has been installed on the guest.
- D. Application Monitoring is only supported on Linux operating systems.
- E. Application Monitoring is only supported on Windows operating systems.

Answer: (SHOW ANSWER)

Explanation/Reference:

Reference: https://ha.yellow-bricks.com/vm_and_application_monitoring.html

NEW QUESTION: 53

Which system traffic type cannot be configured with Network I/O Control (NIOC) bandwidth allocation?

- A. Virtual SAN traffic
- B. ESXi host Management traffic
- C. vSphere Replication traffic
- D. Software FCoE Adapter traffic

Answer: (SHOW ANSWER)

Explanation/Reference:

Explanation:

You can use NIOC to assign bandwidth for host management, virtual machines, iSCSI storage, NFS storage, vSphere vMotion, vSphere Fault Tolerance, vSAN, and vSphere Replication on the physical adapters that are connected to a vSphere Distributed Switch but not Fcoe Adapter traffic.

NEW QUESTION: 54

Which is the predefined user name when publishing a Content Library?

- A. admin
- B. root
- C. administrator
- D. vcsp

Answer: (SHOW ANSWER)

Explanation/Reference:

Reference:

Important

Use the predefined user name vcsp or leave the user name undefined. You must set only a password to protect the library.

Reference:

<http://pubs.vmware.com/vsphere-6-5/index.jsp?topic=%2Fcom.vmware.vapi.progguide.doc%2FGUID1C143338-9F15-4474-B773-1EA447B8BFAE.html>

NEW QUESTION: 55

Which two statements are true for Predictive DRS? (Choose two.)

- A. It balances resource utilization for virtual machines with unpredictable utilization patterns.
- B. It integrates DRS with vRealize Operations Manager to balance workloads for virtual machines before resource utilization spikes occur.
- C. It balances resource utilization based on a threshold's algorithm that runs each night.
- D. It determines the best placement and balance of virtual machines based on a threshold's algorithm that runs each night in vCenter Server 6.5 Database.

Answer: (SHOW ANSWER)

Explanation/Reference:

Explanation:

Predictive DRS

Predictive DRS is a new feature that leverages the predictive analytics of vRealize Operations Manager with the powerful resource scheduler algorithm of vSphere DRS. Together, these two products enable workload balancing for certain VMs before resource utilization spikes occur, potentially eliminating a great amount of resource contention that might have occurred in the past. vRealize Operations Manager runs its dynamic thresholds algorithm nightly against the VMs on which it collects data. These dynamic thresholds create forecasted metrics for the future utilization of the VMs. The metrics are then passed to vSphere DRS to determine the best placement and balance of VMs before resource utilization spikes occur.

Predictive DRS helps prevent resource contention on hosts that run VMs with predictable utilization patterns.

NEW QUESTION: 56

In a vSphere 6.5 cluster, the administrator notices that it is possible to set a percentage in the DRS option,

"Control CPU over-commitment in the cluster."

Which is the purpose of this setting?

- A.** It sets and enforces a maximum percentage of virtual machine CPU usage in GHz in comparison to physical CPU availability in GHz.
- B.** It sets and enforces a maximum ratio in percentage between powered on virtual machine CPUs and available physical CPUs on hosts.
- C.** It prevents the creation of any additional virtual machines in the cluster.
- D.** It calculates the total shares assigned to all virtual machines in comparison to GHz of available physical CPU.

Answer: (SHOW ANSWER)

Explanation/Reference:

Explanation:

<http://vmnomad.blogspot.it/2017/05/testing-CPU-overcommitment-feature.html>

NEW QUESTION: 57

Which is the minimum vSphere Distributed Switch version needed to support Network Health Check?

- A.** 6.5
- B.** 5.1
- C.** 4.1
- D.** 5.5

Answer: (SHOW ANSWER)

Explanation/Reference:

Reference:

<https://docs.vmware.com/en/VMware-vSphere/6.5/com.vmware.vsphere.networking.doc/GUID-4A6C1E1C-8577-4AE6-8459-EEB942779A82.html>

NEW QUESTION: 58

For Virtual Machine Compatibility upgrade, a VM needs to be in which power state?

- A. Maintenance mode
- B. Suspended
- C. Powered Off
- D. Powered On

Answer: (SHOW ANSWER)

Explanation/Reference:

Reference:

<https://pubs.vmware.com/vsphere-51/index.jsp?topic=%2Fcom.vmware.vsphere.upgrade.doc%2FGUID-60768C2F-72E1-42E0-8A17-CA76849F2950.html>

NEW QUESTION: 59

An administrator is creating VMkernel adapters on an ESXi 6.5 host and wants to create separate VMkernel adapters for every type of traffic in the default TCP/IP stack.

Which three types of traffic can be explicitly enabled on a separate VMkernel adapter? (Choose three.)

- A. Virtual SAN traffic
- B. NFS traffic
- C. vMotion traffic
- D. vSphere HA traffic
- E. Fault Tolerance logging traffic

Answer: (SHOW ANSWER)

Explanation/Reference:

Explanation:



NEW QUESTION: 60

An administrator has an application that requires high CPU throughput. Which action would ensure that the application gets the required throughput?

- A. Enable Fault Tolerance on the virtual machine.
- B. Disable Fully Automated DRS.
- C. Set a CPU limit on the virtual machine.
- D. Adjust the virtual machine latency sensitivity.

Answer: (SHOW ANSWER)

Explanation/Reference:

Explanation:

You can adjust the latency sensitivity of a virtual machine to optimize the scheduling delay for latency sensitive applications.

ESXi is optimized to deliver high throughput. You can optimize your virtual machine to meet the low latency requirement of latency sensitive applications. Examples of latency sensitive applications are VOIP or media player applications, or applications that require frequent access to the mouse or keyboard devices.

Reference:

<https://docs.vmware.com/en/VMware-vSphere/6.0/com.vmware.vsphere.resmgmt.doc/GUID-9F4FD589-A73B-454A-A5A5-FED4C0F918C3.html>

NEW QUESTION: 61

During Fibre Channel adapter setup of a ESXi host, which configuration guideline should be considered?

- A. Do not mix Fibre Channel adapter models to access the same LUN from a single host unless the default queue depth has been changed.
- B. Do not mix Fibre Channel adapters from different vendors in a single host.
- C. Use Fibre Channel adapters from different vendors in a single host.
- D. Set the queue depth to 16 if using a mix of different vendors' Fibre Channel adapters in all hosts in the cluster.

Answer: B (LEAVE A REPLY)

Explanation/Reference:

Explanation:

Do not mix FC HBAs from different vendors in a single host. Having different models of the same HBA is supported, but a single LUN cannot be accessed through two different HBA types, only through the same type.

Reference:

<https://docs.vmware.com/en/VMware-vSphere/6.5/com.vmware.vsphere.storage.doc/GUID-2BA05D27-9249-43A4-9B5D-D1F9DD8A7117.html>

Valid 2V0-622D Dumps shared by ExamDiscuss.com for Helping Passing 2V0-622D Exam!

ExamDiscuss.com now offer the **newest 2V0-622D exam dumps**, the ExamDiscuss.com 2V0-622D exam **questions have been updated** and **answers have been corrected** get the **newest** ExamDiscuss.com 2V0-622D dumps with Test Engine here:

<https://www.examdiscuss.com/VMware/exam/2V0-622D/premium/> (270 Q&As Dumps, **35%OFF**

Special Discount Code: freecram)

NEW QUESTION: 62

When using "Cluster resource percentage" for host failover capacity in vSphere HA Admission Control, the total resource requirements are calculated from which two values? (Choose two.)

- A. Total vCPUs assigned to each VM.

- B. Average CPU usage on each VM over time.
- C. Memory reservations on each VM.
- D. Total memory assigned to each VM.
- E. Average active memory on each VM over time.
- F. CPU reservations on each VM.

Answer: (SHOW ANSWER)

Explanation/Reference:

Reference:

<https://docs.vmware.com/en/VMware-vSphere/6.5/com.vmware.vsphere.avail.doc/GUID-FAFEFEFF-56F7-4CDF-A682-FC3C62A29A95.html>

NEW QUESTION: 63

An administrator is trying to remove a host from a vSphere Distributed Switch named DSwitch01. The following error message is displayed:

vDS DSwitch01 port 17 is still on host 192.168.100.23 connected to VM01 nic=4000 type=vmVnic

Which two actions can the administrator make before removing the host from the vSphere Distributed Switch? (Choose two.)

- A. Migrate VM01 to DSwitch01 port 1.
- B. Add an additional vNIC to VM01 to another vSphere Distributed Switch.
- C. Migrate VM01 to another host.
- D. Disconnect the VM01's vNIC.
- E. Place VM01 into Maintenance Mode.

Answer: (SHOW ANSWER)

Explanation/Reference:

Explanation:

Before removing the host from distributed switch, migrate VM01 to Dswitch01 Port1. Then disconnect VM01 NIC.

NEW QUESTION: 64

A cluster with two resource pools named RP-PROD and RP-DEV is configured based on custom requirements. A vSphere administrator temporarily disables DRS for this cluster.

Upon re-enabling DRS, how would the resource pool configuration have changed?

- A. Both resource pools still exist, but their shares have been reverted to the default share values.
- B. Nothing. Everything has stayed the same.
- C. Both resource pools no longer exist and all virtual machines that resided in the resource pools now reside under the hosts in the cluster.
- D. Both resource pools exist, but all virtual machines that resided in the resource pools now reside under the hosts in the cluster.

Answer: (SHOW ANSWER)

Explanation/Reference:

Explanation:

After re-enabling the resource pools, they will exist but the shares will be reverted to default share values.

NEW QUESTION: 65

Which feature is available for virtual machine configured with DirectPath I/O?

- A. DRS
- B. Snapshots
- C. Fault Tolerance
- D. Clone

Answer: (SHOW ANSWER)

Explanation/Reference:

Explanation:

The following features are unavailable for virtual machines configured with DirectPath:

Hot adding and removing of virtual devices

▪

Suspend and resume

▪

Record and replay

▪

Fault tolerance

▪

High availability

▪

DRS (limited availability. The virtual machine can be part of a cluster, but cannot migrate across hosts)

▪

Snapshots

▪

NEW QUESTION: 66

An administrator wants to enable VMware Fault Tolerance on a virtual machine.

Which two vSphere features are supported with Fault Tolerance? (Choose two.)

- A. VM Component Protection
- B. vSphere HA
- C. Storage DRS
- D. Snapshots

Answer: B,C (LEAVE A REPLY)

Explanation/Reference:

Reference:

<https://docs.vmware.com/en/VMware-vSphere/6.5/com.vmware.vsphere.avail.doc/GUID-F5264795-11DA-4242-B774-8C3450997033.html>

NEW QUESTION: 67

Which two partitions are used for the VMware vCenter Server Appliance embedded vPostgres database? (Choose two.)

- A. /storage/seat/

- B. /storage/netdump/
- C. /storage/db/
- D. /storage/core/

Answer: (SHOW ANSWER)

Explanation/Reference:

Explanation:

VMDK6	10GB	/storage/db	VMware Postgres database storage location
VMDK7	5GB	/storage/dblog	VMware Postgres database logging location
VMDK8	10GB	/storage/seat	Stats, Events, Alarms and Tasks (SEAT) directory for VMware Postgres

Reference:

https://kb.vmware.com/selfservice/microsites/search.do?language=en_US&cmd=displayKC&externalId=2126276

NEW QUESTION: 68

A vSphere administrator wants to upgrade NFS3 datastores to NFS4.1 on ESXi 6.5 hosts with running production virtual machines.

Which option is valid?

- A. Run ESXi command to upgrade the datastore.
- B. Unmount the datastore from a single host, then mount it as NFS 4.1 datastore, and repeat this one host at a time until the mount has been upgraded on all hosts.
- C. Create a new NFS 4.1 datastore, and then use Storage vMotion to migrate virtual machines from the old datastore to the new one.
- D. Right click the datastore and upgrade it as a NFS 4.1 datastore.

Answer: (SHOW ANSWER)

Explanation/Reference:

Reference:

<https://docs.vmware.com/en/VMware-vSphere/6.0/com.vmware.vsphere.storage.doc/GUID-8A929FE4-1207-4CC5-A086-7016D73C328F.html>

NEW QUESTION: 69

Which setting will allow a virtual machine to have direct secure access to an RDM?

- A. NIOC
- B. NPV
- C. NPIV
- D. CPUID Mask

Answer: (SHOW ANSWER)

Explanation/Reference:

Reference:

https://docs.vmware.com/en/VMware-vSphere/6.5/com.vmware.vsphere.vm_admin.doc/GUID-74DDA7F7-84AC-4251-8749-552A2678A33C.html

NEW QUESTION: 70

After deploying the vCenter Server Appliance, an administrator can log into the vSphere Web Client as administrator@vSphere.local, but not with Active Directory domain credentials.

Which action will troubleshoot this?

- A. Create a domain group named "esxadmins" and add the domain account to it.
- B. Add the Active Directory domain as a Single Sign-On identity source.
- C. Change the Active Directory account password to match administrator@vSphere.local" password.
- D. Create a child domain named "vSphere.local".

Answer: B (LEAVE A REPLY)

Explanation/Reference:

Reference:

<https://docs.vmware.com/en/VMware-vSphere/6.0/com.vmware.vsphere.security.doc/GUID-A2A90265-4A6B-4E23-9681-97B867E55457.html>

NEW QUESTION: 71

Which is the maximum number of block devices (LUNs) that are supported by ESXi hosts that are running version 6.5?

- A. 1024
- B. 512
- C. 2048
- D. 256

Answer: (SHOW ANSWER)

Explanation/Reference:

Reference:

<https://www.vmware.com/pdf/vsphere6/r65/vsphere-65-configuration-maximums.pdf>

NEW QUESTION: 72

Which happens if the swap file of a virtual machine is inaccessible to the destination host during a vMotion?

- A. The swap file is stored with the virtual machine configuration file.
- B. The swap file is copied to the destination host.
- C. The vMotion will fail.
- D. The swap file is replicated to a datastore accessible by both hosts.

Answer: (SHOW ANSWER)

Explanation/Reference:

Explanation

If the destination host cannot access the specified swap file location, it stores the swap file with the virtual machine configuration file.

Reference: <https://kb.vmware.com/s/article/1004082>

NEW QUESTION: 73

ESXi hosts with 10Gbps network cards are attached to a distributed switch. The administrator has upgraded to NIOC3 and wants to allow vMotion traffic to use as much bandwidth as possible but must ensure that other services always have sufficient bandwidth.

How can this be done?

- A. Configure shares on the distributed switch for the vMotion traffic type.
- B. Configure limits on the distributed switch on the on vMotion traffic type.
- C. Associate vMotion traffic with a network resource pool and use CoS tagging.
- D. Set shares on user-defined network resource pool and associate it with vMotion traffic.

Answer: (SHOW ANSWER)

Explanation/Reference:

Explanation:

From the Shares drop-down menu, edit the share of the traffic in the overall flow through a physical adapter.

Network I/O Control applies the configured shares when a physical adapter is saturated.

Reference:

<https://docs.vmware.com/en/VMware-vSphere/6.5/com.vmware.vsphere.networking.doc/GUID-491C1690-D32E-4940-AEA0-6E1C65D36B93.html>

NEW QUESTION: 74

vSphere Data Protection 6.1 provides the availability to back up and restore individual applications.

Which are the three supported applications? (Choose three.)

- A. Microsoft Dynamics Server
- B. Oracle Database Server
- C. Microsoft SharePoint Server
- D. Microsoft Exchange Server
- E. Microsoft SQL Server

Answer: (SHOW ANSWER)

Explanation/Reference:

Reference

<https://www.vmware.com/files/pdf/vsphere/vmware-vsphere-data-protection-overview.pdf> (p.3)

NEW QUESTION: 75

Which feature of vSphere networking protects hosts from losing connection to vCenter Server as a result of misconfiguration of the management network?

- A. NIC Teaming
- B. Private VLAN
- C. Rollback
- D. Health Check

Answer: (SHOW ANSWER)

Explanation/Reference:

Explanation: By rolling configuration changes back, vSphere protects hosts from losing connection to vCenter Server as a result from misconfiguration of the management network.

Reference:

<https://docs.vmware.com/en/VMware-vSphere/6.5/com.vmware.vsphere.networking.doc/GUID-8BA411A4-8582-4C02-8489-D3D7D09A9BF0.html>

NEW QUESTION: 76

Which is required by vCenter Converter Standalone to convert a physical Red Hat Enterprise Linux 7 machine to a virtual machine?

- A. The Linux machine must be powered off.
- B. The Linux machine must have the SSH daemon started.
- C. The Linux machine must use a static IP address.
- D. The Linux machine must have a fully-qualified domain name.

Answer: (SHOW ANSWER)

Explanation/Reference:

Explanation:

Ports used when converting a powered on machine running Linux

Table contains a list of the ports that must be open during the conversion of powered on source machines running Linux.

Ports required during Linux P2V		
Communication Path	TCP Ports	Notes
Converter Standalone server to powered on source machine	22	Used to establish an SSH connection between the Converter Standalone server and the source machine.
Converter Standalone client to Converter Standalone server	443	Required only if the Converter Standalone server and client components are on different machines.
Converter Standalone server to vCenter server	443	Required only if the conversion destination is a vCenter Server.
Converter Standalone server to ESX/ESXi	443, 902	If the conversion destination is a vCenter Server, only port 902 is required.
Converter Standalone server to helper virtual machine	443	
Helper virtual machine to powered on source machine	22	Used to establish an SSH connection between the helper virtual machine and the source machine. By default, the IP address of the helper virtual machine is assigned by DHCP. If no DHCP server is available on the destination network, you must manually assign the helper virtual machine an IP address.

Reference:

https://www.vmware.com/pdf/convsa_61_guide.pdf

Valid 2V0-622D Dumps shared by ExamDiscuss.com for Helping Passing 2V0-622D Exam!
ExamDiscuss.com now offer the **newest 2V0-622D exam dumps**, the ExamDiscuss.com 2V0-622D exam **questions have been updated** and **answers have been corrected** get the **newest** ExamDiscuss.com 2V0-622D dumps with Test Engine here:

<https://www.examdiscuss.com/VMware/exam/2V0-622D/premium/> (270 Q&As Dumps, **35%OFF**)

Special Discount Code: [freecram](#))

NEW QUESTION: 77

Which two encryption keys does the host use when encrypting virtual machine files? (Choose two.)

- A. Public Key Infrastructure Encryption Key (PKI)
- B. Master Encryption Key (MEK)
- C. Data Encryption Key (DEK)
- D. Key Encryption Key (KEK)

Answer: ([SHOW ANSWER](#))

Explanation/Reference:

Reference:

https://pubs.vmware.com/vsphere-65/index.jsp?topic=%2Fcom.vmware.wssdk.pg.doc%2FPG_VM_Encryption.14.2.html

NEW QUESTION: 78

In vSphere 6.5, a virtual machine is thinly-provisioned on a VMFS6 datastore. The administrator deleted a large file within the guest OS. The freed blocks in the datastore are no longer needed by the VM.

Which feature in vSphere 6.5 allows the backing storage to automatically reclaim the freed blocks?

- A. ATS
- B. Defrag
- C. UNMAP
- D. Auto Reclaim

Answer: ([SHOW ANSWER](#))

Explanation/Reference:

Explanation:

VAAI UNMAP was introduced in vSphere 5.0 to allow the ESXi host to inform the backing storage that files or VMs had been moved or deleted from a Thin Provisioned VMFS datastore. This allowed the backing storage to reclaim the freed blocks. There was no way of doing this previously, resulting in many customers with a considerable amount of stranded space on their Thin Provisioned VMFS datastores.

NEW QUESTION: 79

An administrator has decided to use Auto Deploy in the environment.

Which two considerations must be taken into account before configuring Auto Deploy? (Choose two.)

- A. Hosts in a cluster must be connected to a Distributed Switch.
- B. Host profiles are not supported when using Auto Deploy.

- C. DHCP must be configured to support PXE boot.
- D. Storage DRS must be enabled.
- E. A TFTP server must be setup and running.

Answer: (SHOW ANSWER)

Explanation/Reference:

Reference:

https://pubs.vmware.com/vsphere-50/index.jsp?topic=%2Fcom.vmware.vsphere.install.doc_50%2FGUID-21FF3053-F77C-49E6-81A2-9369B85F5D52.html

NEW QUESTION: 80

Using the vCenter Server Appliance 6.5, which two tools can be used to manage Auto Deploy deploy rules? (Choose two.)

- A. PowerCLI
- B. Plug-Ins available in the vCenter Server Appliance Shell
- C. vSphere Appliance Management UI
- D. vCenter Server Appliance BASH Shell
- E. Auto Deploy GUI in the vSphere Web Client

Answer: (SHOW ANSWER)

Explanation/Reference:

Reference:

<http://www.enterprisedaddy.com/2016/12/vsphere-6-5-auto-deploy-on-vcenter-server-6-5/>

NEW QUESTION: 81

An administrator sees the following error in the log files:

```
Lost access to volume 496befed-1c79c817-6beb-001ec9b60619 (san-  
lun-100) due to connectivity issues.
```

Which two events could be the source of the error message? (Choose two.)

- A. vCenter Server failure
- B. VXLAN failure
- C. Disk array failure
- D. Network failure
- E. ESXi host failure

Answer: (SHOW ANSWER)

Explanation/Reference:

Reference: https://kb.vmware.com/selfservice/microsites/search.do?language=en_US&cmd=displayKC&externalId=1009557

NEW QUESTION: 82

An administrator is in the process of deploying a new ESXi host.

-The host is able to be added to the vCenter Server's inventory, but after a short period of time it shows as disconnected.

-The administrator is able to reconnect the host but it then disconnects again after a short period of time.
Which is the problem?

- A. Port 902 UDP from the host to the vCenter Server is blocked
- B. Port 443 TCP from the host to the vCenter Server is blocked
- C. Port 902 TCP from the host to the vCenter Server is blocked
- D. Port 443 TCP from the vCenter Server to the host is blocked

Answer: A (LEAVE A REPLY)

Explanation/Reference:

Explanation:

On 902 port managed hosts send a regular heartbeat to the vCenter Server system. This port must not be blocked by firewalls between the server and the hosts or between hosts.

Reference:

<https://kb.vmware.com/s/article/1012382>

NEW QUESTION: 83

An administrator attempts to manually reclaim space on thin-provisioned VMFS6 volumes but finds that no additional space is being recovered.

Which could be causing this?

- A. vSphere 6.5 does not support manual UNMAP.
- B. The manual UNMAP operation has been moved to the vSphere web client.
- C. The VASA version in use is incompatible.
- D. UNMAP is automated for VMFS6.

Answer: (SHOW ANSWER)

Explanation/Reference:

Explanation:

The additional space is not recovered because UNMAP is automated for VMFS 6. To get additional space recovered using the manual reclaim process, you need to remove UNMAP from being automated for VMFS

6.

Reference:

https://kb.vmware.com/selfservice/microsites/search.do?language=en_US&cmd=displayKC&externalId=2147824

NEW QUESTION: 84

When using DPM in a vSphere HA cluster with Admission Control enabled, which two statements are true?

(Choose two.)

- A. DPM can not be enabled on a cluster with HA Admission control enabled.
- B. If necessary, DPM powers on hosts from standby mode to maintain failover needs.
- C. EVC must be enabled on the cluster before DPM can be enabled.

D. DPM and HA do not interact with each other. There will be no change in behavior when DPM is enabled on a cluster using HA.

E. DPM does not place hosts in standby mode if doing so would violate failover requirements.

Answer: (SHOW ANSWER)

Explanation/Reference:

Explanation

DRS does not evacuate virtual machines from a host for the purpose of placing it in maintenance mode or standby mode if placing the host in this state would violate failover requirements. You can still manually evacuate virtual machines in order to place hosts in maintenance mode or standby mode. If you violate failover requirements by doing this, however, the cluster turns red.

VMware DPM does not place hosts in standby mode if doing so would violate failover requirements

If necessary, VMware DPM powers on hosts (brings them out of standby mode) to maintain failover needs.

A minimum of two hosts must be powered on in any HA-enabled cluster.

Reference:

<https://kb.vmware.com/s/article/1007006>

NEW QUESTION: 85

Which three types of Content Libraries exist within vSphere 6.5? (Choose three.)

- A.** Remote Content Library
- B.** Published Content Library
- C.** Local Content Library
- D.** Shared Content Library
- E.** Subscribed Content Library

Answer: B,C,E (LEAVE A REPLY)

Explanation/Reference:

Reference:

<https://esxsi.com/2016/12/30/content-libraries/>

NEW QUESTION: 86

Which two datastore types are supported by Storage I/O Control v2? (Choose two.)

- A.** vSAN
- B.** RDM
- C.** NFS
- D.** Virtual Volumes
- E.** VMFS

Answer: (SHOW ANSWER)

Explanation/Reference:

Reference: <https://storagehub.vmware.com/#!/vsphere-core-storage/vsphere-6-5-storage/storage-i-o-control-v2/1>

NEW QUESTION: 87

An administrator wants to restore the vCenter Server Appliance 6.5 from backup.

Where can this be accomplished?

- A. from the VMware vSphere Appliance Management Interface
- B. from the vCenter Server Appliance Installer
- C. from the ESXi Host Client
- D. from within the VMware vSphere Web Client

Answer: (SHOW ANSWER)

NEW QUESTION: 88

An administrator is investigating virtual machine performance issues using ESXTOP. The ESXi host does not have hyperthreading enabled.

Which statistics would be relevant for troubleshooting VM performance issues?

- A. %RDY
- B. %IDLE
- C. %RUN
- D. CORE UTIL(%)

Answer: (SHOW ANSWER)

Explanation/Reference:

Reference:

<https://communities.vmware.com/docs/DOC-9279>

NEW QUESTION: 89

An administrator cannot enable multi-processor Fault Tolerance (SMP-FT) for a virtual machine.

Which are two possible causes for this? (Choose two.)

- A. The virtual machine is running on a vSAN datastore.
- B. The Fault Tolerance network is using a 10Gbit uplink.
- C. The virtual machine has 6 vCPUs assigned.
- D. The virtual machine has a 1TB VMDK attached.
- E. The virtual machine has snapshots present.

Answer: (SHOW ANSWER)

Explanation/Reference:

Reference:

<https://docs.vmware.com/en/VMware-vSphere/6.0/com.vmware.vsphere.avail.doc/GUID-57929CF0-DA9B-407A-BF2E-E7B72708D825.html>

https://pubs.vmware.com/vsphere-50/index.jsp?topic=%2Fcom.vmware.vsphere.avail.doc_50%2FGUID05EA00B4-8142-4388-9439-F949C30ACA03.html

NEW QUESTION: 90

An administrator is trying to vMotion a VM from his datacenter to a recovery site.
Which is the maximum allowed RTT (Round-Trip Time) latency between source and destination host?

- A. 100 milliseconds
- B. 150 milliseconds
- C. 15 milliseconds
- D. 10 milliseconds

Answer: (SHOW ANSWER)

Explanation/Reference:

Explanation:

Round-Trip Time for Long-Distance vMotion Migration

If you have the proper license applied to your environment, you can perform reliable migrations between hosts that are separated by high network round-trip latency times. The maximum supported network round-trip time for vMotion migrations is 150 milliseconds. This round-trip time (RTT) lets you migrate virtual machines to another geographical location at a longer distance.

Reference: <https://kb.vmware.com/s/article/2106949>

NEW QUESTION: 91

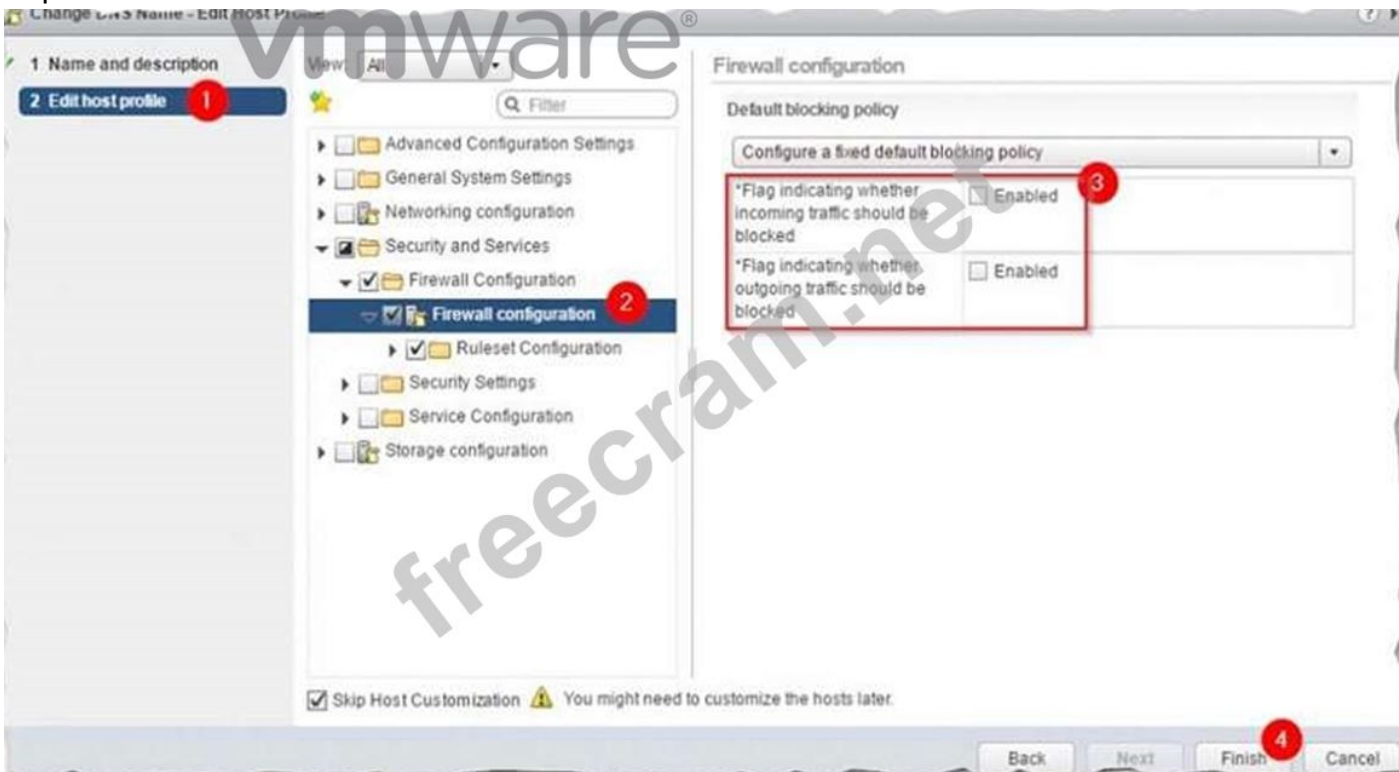
Which Host Profile Subprofile configuration is used to configure firewall settings for ESXi hosts?

- A. Advanced Configuration Settings
- B. General System Settings
- C. Security
- D. Networking

Answer: (SHOW ANSWER)

Explanation/Reference:

Explanation:



Reference: <https://www.altaro.com/vmware/an-introduction-to-vmware-host-profiles/>

Valid 2V0-622D Dumps shared by ExamDiscuss.com for Helping Passing 2V0-622D Exam!
ExamDiscuss.com now offer the **newest 2V0-622D exam dumps**, the ExamDiscuss.com 2V0-622D exam **questions have been updated** and **answers have been corrected** get the **newest** ExamDiscuss.com 2V0-622D dumps with Test Engine here:
<https://www.examdiscuss.com/VMware/exam/2V0-622D/premium/> (270 Q&As Dumps, **35%OFF** Special Discount Code: **freecram**)

NEW QUESTION: 92

Which two datapoints does VM Monitoring evaluate before resetting a virtual machine? (Choose two.)

- A. High CPU activity on the VM
- B. High CPU activity on the ESXi host running the VM
- C. Heartbeats sent from VMware Tools
- D. High memory utilization on the VM
- E. I/O activity

Answer: (SHOW ANSWER)

Explanation/Reference:

Reference: https://ha.yellow-bricks.com/vm_and_application_monitoring.html

NEW QUESTION: 93

Which CLI command shows the physical uplink status for a vmnic?

- A. esxcli network ip connection list
- B. esxcli network ip neighbor list
- C. esxcli network nic get
- D. esxcli network nic list

Answer: (SHOW ANSWER)

Explanation/Reference:

Explanation:

View the current vSwitch configuration and vmkernel interface configuration using these commands:

esxcli network vswitch standard list # list current vswitch configuration

esxcli network vswitch dvs vmware list # list Distributed Switch configuration

esxcli network ip interface list # list vmkernel interfaces and their configuration

esxcli network nic list # display listing of physical adapters and their link state

Reference:

https://pubs.vmware.com/vsphere-50/index.jsp?topic=%2Fcom.vmware.vcli.ref.doc_50%2Fesxcli_network.html

NEW QUESTION: 94

Which two situations could cause a virtual machine to appear with (orphaned) appended to its name?
(Choose two.)

- A. if a host failover is unsuccessful
- B. if a virtual machine was removed from vCenter Server's inventory
- C. if a virtual machine was deployed from template, and the template has been deleted
- D. if a virtual machine is unregistered directly on the host

Answer: (SHOW ANSWER)

Explanation/Reference:

Reference: <https://pubs.vmware.com/vsphere-60/index.jsp?topic=%2Fcom.vmware.vsphere.troubleshooting.doc%2FGUID-BFD8C9BC-30FB-4A92-AFEC-2FC9FF387920.html>

NEW QUESTION: 95

A user is given the "Virtual machine user (sample)" role in a vSphere 6.x environment.
Which three permissions would the user be able to perform? (Choose three.)

- A. Reset a virtual machine.
- B. Power on a virtual machine.
- C. Move a host into a cluster.
- D. Configure CD media.
- E. Migrate a virtual machine with Storage vMotion.

Answer: (SHOW ANSWER)

Explanation/Reference:

Explanation:

With virtual machine user sample role, you can reset a virtual machine, power on a VM, and configure CD media. All other roles are for the administrator to perform.

NEW QUESTION: 96

Which three TCP/IP stacks are built in at the VMkernel level in vSphere 6 x? (Choose three.)

- A. Fault Tolerance
- B. vMotion
- C. Provisioning
- D. Management
- E. Default

Answer: (SHOW ANSWER)

Explanation/Reference:

Reference:

<https://docs.vmware.com/en/VMware-vSphere/6.5/com.vmware.vsphere.networking.doc/GUID-D4191320-209E-4CB5-A709-C8741E713348.html>

NEW QUESTION: 97

An administrator wants to upgrade ESXi 5.5 hosts to ESXi 6.5 using Update Manager. When performing a scan for baseline compliance, the host's status is marked Compliant.

Which has happened?

- A. Host must be version 6.0 in order to upgrade to 6.5.
- B. Host has some third-party software installed.
- C. Host has no upgrade baseline attached.
- D. Host hardware is not supported for upgrade.

Answer: ([SHOW ANSWER](#))

Explanation/Reference:

Explanation:

<http://vmiss.net/2016/12/20/upgrading-esxi-using-vsphere-update-manager-6-5-on-the-vcenter-server-appliance/>

NEW QUESTION: 98

An administrator wants to create and use a vApp.

Which pre-requisite must be met before the administrator can create a vApp?

- A. The vApp can only be deployed in an EVC enabled cluster.
- B. The vApp must be created within a StorageDRS cluster.
- C. None. vSphere 6.5 does not support vApp deployments.
- D. The vApp can only be created in a DRS enabled cluster.

Answer: ([SHOW ANSWER](#))

Explanation/Reference:

Explanation:

You need to turn on Vsphere DRS to create vApp.

Reference:

<https://www.altaro.com/vmware/setting-up-vmware-vapp-in-vcenter-server-in-4-steps/>

NEW QUESTION: 99

Which command will start all services on a vCenter Server Appliance?

- A. /etc/init.d/hostd start
- B. services.sh restart
- C. service-control - -start -- all
- D. service vmware - - vpxd start

Answer: ([SHOW ANSWER](#))

Explanation/Reference:

Reference:

<https://4sysops.com/archives/start-and-stop-services-in-vcenter-server-appliance-vcsa-6-5/>

NEW QUESTION: 100

Which three requirements are needed to apply RAID 5 or RAID 6 erasure coding on a vSAN 6.2 or 6.5 object? (Choose three.)

- A. on Disk Format 3.0
- B. Hybrid vSAN
- C. All Flash vSAN
- D. vSAN Advanced License
- E. Stretched Cluster Configurations

Answer: (SHOW ANSWER)

Explanation/Reference:

Reference:

<http://www.vmwarearena.com/virtual-san-6-2-raid5raid6-erasure-coding/>

NEW QUESTION: 101

Which are the two network requirements for a VMware vSAN 6.5 cluster? (Choose two.)

- A. Multicast must be enabled on the physical switches and routers that handle vSAN traffic.
- B. vSAN requires IPv6 only.
- C. All hosts must have a dedicated 40GbE NIC.
- D. The vSAN network supported IPv4 or IPv6.
- E. vSAN requires IPv4 only.

Answer: (SHOW ANSWER)

Explanation/Reference:

References:

<https://docs.vmware.com/en/VMware-vSphere/6.5/com.vmware.vsphere.virtualsan.doc/GUID-AFF133BC-F4B6-4753-815F-20D3D752D898.html>

<http://cormachogan.com/2014/01/21/vsan-part-15-multicast-requirement-for-networking-misconfiguration-detected/>

NEW QUESTION: 102

An administrator has enabled vSphere Distributed Switch Health Check. The hosts connected to that Distributed Switch all display an alert:

vSphere Distributed Switch MTU supported status

The administrator has all of the VMkernel ports MTU sizes set to 1600.

Which action will remedy this problem?

- A. Configure the Distributed Switch to MTU 9100.
- B. Disconnect and reconnect the physical network cable.
- C. Configure the physical switch to MTU 1600.
- D. Disable the Distributed Switch MTU.

Answer: (SHOW ANSWER)

Explanation/Reference:

Reference:

<https://docs.vmware.com/en/VMware-vSphere/6.5/com.vmware.vsphere.networking.doc/GUID-53F968D9-2F91-41DA-B7B2-48394D997F2A.html>

NEW QUESTION: 103

Which three are supported upgrade processes for ESXi host? (Choose three.)

- A. using vSphere Auto Deploy
- B. using a TFTP server
- C. using Update Manager
- D. using an ESXCLI command
- E. installing from CIFS share

Answer: (SHOW ANSWER)

Explanation/Reference:

Reference:

<https://docs.vmware.com/en/VMware-vSphere/6.5/vsphere-esxi-vcenter-server-65-upgrade-guide.pdf>

NEW QUESTION: 104

Which two statements are true about Permanent Device Loss (PDL)? (Choose two.)

- A. All paths are shown as Dead for the affected device.
- B. The datastore cluster is incorrectly configured.
- C. The datastore on the affected device shown a yellow warning sign.
- D. The datastore on the affected device shows a red error sign.
- E. The operational state of the affected device changes to Lost Communication.

Answer: A,E (LEAVE A REPLY)

Explanation/Reference:

Reference:

<https://docs.vmware.com/en/VMware-vSphere/6.5/com.vmware.vsphere.storage.doc/GUID-45CF28F0-87B1-403B-B012-25E7097E6BDF.html>

NEW QUESTION: 105

An administrator is attempting to access an ESXi host via the DCUI but is unable to do so.

Which could be two possible causes? (Choose two.)

- A. The host in question has no out-of-band management capability (i.e. iLO/iDRAC).
- B. The SSH service is disabled on the host.
- C. Strict lockdown mode is enabled on the host.
- D. Normal lockdown mode is enabled and the administrator is a member of the Exception User list.
- E. The DCUI service is disabled on the host.

Answer: C,E (LEAVE A REPLY)

Explanation/Reference:

Explanation:

Reference:

<https://blogs.vmware.com/vsphere/2015/03/vsphere-6-0-lockdown-modes.html>

NEW QUESTION: 106

An administrator is using virtual machine encryption in their vSphere 6.5 environment. The Key Management Server (KMS) has experienced a critical failure.

Which two statements are true about VM encryption when the KMS is not available? (Choose two.)

- A. VMs will shut down gracefully in the event of a KMS outage as a proactive measure to prevent data theft.
- B. VMs which were running at the time of the KMS failure will continue to run.
- C. If an ESXi host is rebooted, it will be unable to power on encrypted VMs until KMS connectivity is restored.
- D. vCenter Server will continue to distribute encryption keys as long as it is not rebooted while the KMS is unreachable.
- E. ESXi hosts within the same cluster will share keys with one another while the KMS is unreachable.

Answer: (SHOW ANSWER)

Explanation/Reference:

Explanation:

If the KMS is unreachable, the VMs running at the time of KMS failure will continue to run. Another fact is if an ESXi host is rebooted, it will not power on encrypted VMs until KMs connectivity is fully restored.

Reference:

<https://docs.vmware.com/en/VMware-vSphere/6.5/vsphere-esxi-vcenter-server-65-security-guide.pdf>

Valid 2V0-622D Dumps shared by ExamDiscuss.com for Helping Passing 2V0-622D Exam!

ExamDiscuss.com now offer the **newest 2V0-622D exam dumps**, the ExamDiscuss.com 2V0-622D exam **questions have been updated** and **answers have been corrected** get the **newest** ExamDiscuss.com 2V0-622D dumps with Test Engine here:

<https://www.examdiscuss.com/VMware/exam/2V0-622D/premium/> (270 Q&As Dumps, **35%OFF**

Special Discount Code: freecram)

NEW QUESTION: 107

Which external backup target can be used for vSphere Data Protection 6.1?

- A. NetApp Metro Cluster
- B. Dell EMC Data Domain
- C. IBM SVC
- D. Hitachi USP VM

Answer: (SHOW ANSWER)

Explanation/Reference:

Reference:

<https://www.vmware.com/files/pdf/vsphere/vmware-vsphere-data-protection-overview.pdf>

NEW QUESTION: 108

Which are two correct descriptions of consumed memory and active memory? (Choose two.)

- A. Consumed memory metric is the amount of memory that the virtual machine has recently used.
- B. Active memory is the exact amount of memory that is currently in use by the virtual machine, plus a 25% buffer (default setting).
- C. Consumed memory metric is the maximum amount of memory used by the VM at any point in its lifetime.
- D. Active memory is an estimation of the amount of memory that is currently used by the virtual machine, plus a 25% buffer (default setting).

Answer: (SHOW ANSWER)

Explanation/Reference:

Reference <https://blogs.vmware.com/vsphere/2016/05/load-balancing-vsphere-clusters-with-drs.html>

NEW QUESTION: 109

An ESXi host's VMCA-Signed certificate has expired. How can the certificate be renewed?

- A. In the vSphere Web Client, browse to the host in question. Click the Manage tab and select settings. Select System and click Certificate, then click the Renew button.
- B. In the vSphere Web Client, browse to the host in question. Click the Manage tab and select settings. Select System and click Certificate, then click the Refresh CA Certificates button.
- C. Run the command `/sbin/generate-certificates` on the affected host.
- D. Disconnect the host from vCenter Server and reconnect it.

Answer: (SHOW ANSWER)

Explanation/Reference:

Reference:

<http://pubs.vmware.com/vsphere-60/index.jsp#com.vmware.vsphere.security.doc/GUID-ECFD1A29-0534-4118-B762-967A113D5CAA.html>

NEW QUESTION: 110

Which is the purpose of VM Component Protection (VMCP)?

- A. Reconnect virtual NICs that become disconnected
- B. Respond when a datastore encounters a PDL or APD failure.
- C. Restart applications when they are no longer running.
- D. Respond when viruses are detected inside a virtual machine.

Answer: (SHOW ANSWER)

Explanation/Reference:

Reference:

<https://blogs.vmware.com/vsphere/2015/06/vm-component-protection-vmcp.html>

Valid 2V0-622D Dumps shared by ExamDiscuss.com for Helping Passing 2V0-622D Exam!
ExamDiscuss.com now offer the **newest 2V0-622D exam dumps**, the ExamDiscuss.com 2V0-622D exam **questions have been updated** and **answers have been corrected** get the **newest** ExamDiscuss.com 2V0-622D dumps with Test Engine here:

<https://www.examdiscuss.com/VMware/exam/2V0-622D/premium/> (**270** Q&As Dumps, **35%OFF**

Special Discount Code: [freecram](#))