

VMware.2V0-602.v2018-11-22.q228

Exam Code:	2V0-602
Exam Name:	vSphere 6.5 Foundations Exam
Certification Provider:	VMware
Free Question Number:	228
Version:	v2018-11-22
# of views:	1759
# of Questions views:	100340
https://www.freecram.net/torrent/VMware.2V0-602.v2018-11-22.q228.html	

NEW QUESTION: 1

Which type of network traffic is used for vSphere High Availability (HA) by default?

- A. VM Network traffic
- B. Management network traffic
- C. vMotion network traffic
- D. iSCSI Port Binding network traffic

Answer: (SHOW ANSWER)

Explanation/Reference:

Reference: <https://docs.vmware.com/en/VMware-vSphere/6.5/com.vmware.vsphere.avail.doc/GUID-B1906BCD-E538-4FFF-AAE9-5403FE253F38.html>

NEW QUESTION: 2

When managing search queries in vRealize Log Insight, what three actions can be performed? (Choose three.)

- A. Share the Current Query
- B. Load a Query
- C. Take a Snapshot of a Query
- D. Pause the Current Query
- E. Duplicate a Query

Answer: A,B,C (LEAVE A REPLY)

Explanation/Reference:

Reference: <https://pubs.vmware.com/log-insight-30/index.jsp#com.vmware.log-insight.user.doc/GUID-0B168CCD-B387-4926-BC7F-39263D8F9CCE.html?resultof=%2522%2573%2565%2561%2572%2563%2568%2522%2520%2522%2571%2575%2565%2572%2569%2565%2573%2522%2520%2522%2571%2575%2565%2572%2569%2522%2520>

NEW QUESTION: 3

A virtual machine template is accidentally removed from the vCenter Server Inventory.

Which method would be used to recover the template back into the environment?

- A. Use the datastore browser to locate the template, then right click and add the .vmx file to inventory.
- B. Using the Managed Object Browser and adding the template from the ManagedObjectReference:GuestFileManager object.
- C. Using the Managed Object Browser and adding the template from the ManagedObjectReference:VirtualDiskManager object.
- D. Use the datastore browser to locate the template, then right click and add the .vmtx file to inventory.

Answer: D ([LEAVE A REPLY](#))

NEW QUESTION: 4

What is true regarding datastores on ESXi 6.x?

- A. VMFS3 and VMFS5 datastores can be newly created
- B. NFS datastore can be concurrently mounted using NFS 4.1 on one host and NFS on another
- C. NFS 4.1 datastore does not support Fault Tolerance (FT)
- D. NFS 3.0 datastore does not support Fault Tolerance (FT)

Answer: ([SHOW ANSWER](#))

NEW QUESTION: 5

A vSphere Administrator notices that the newly deployed ESXi hosts cannot stay in a connected state in vCenter Server for more than 60 seconds at a time. The Administrator knows that the hardware is in good health and that the ESXi hypervisors are properly configured.

What is the source of the problem?

- A. The hosts are not a part of a vSphere Distributed Switch.
- B. Firewall rules that have too many ports open.
- C. Firewall rules preventing hosts from sending heartbeats to vCenter Server.
- D. The hosts do not have persistent logging configured.

Answer: ([SHOW ANSWER](#))

Explanation/Reference:

Reference: [https://kb.vmware.com/selfservice/search.do?](https://kb.vmware.com/selfservice/search.do?cmd=displayKc&docType=kc&docTypeID=DT_KB_1_1&externalId=1029919)

[cmd=displayKc&docType=kc&docTypeID=DT_KB_1_1&externalId=1029919](https://kb.vmware.com/selfservice/search.do?cmd=displayKc&docType=kc&docTypeID=DT_KB_1_1&externalId=1029919)

NEW QUESTION: 6

What are two benefits of using NFS 4.1 with vSphere 6.x as compared to NFS 3? (Choose two.)

- A. NFS 4.1 supports hardware acceleration
- B. NFS 4.1 supports Kerberos Authentication
- C. NFS 4.1 supports IPv6
- D. NFS 4.1 supports multipathing

Answer: ([SHOW ANSWER](#))

NEW QUESTION: 7

An administrator has configured an alarm to be notified when a virtual machine meets two conditions:
high virtual CPU

high active memory consumption

The alarm is malfunctioning and triggering when either condition is met instead of both.

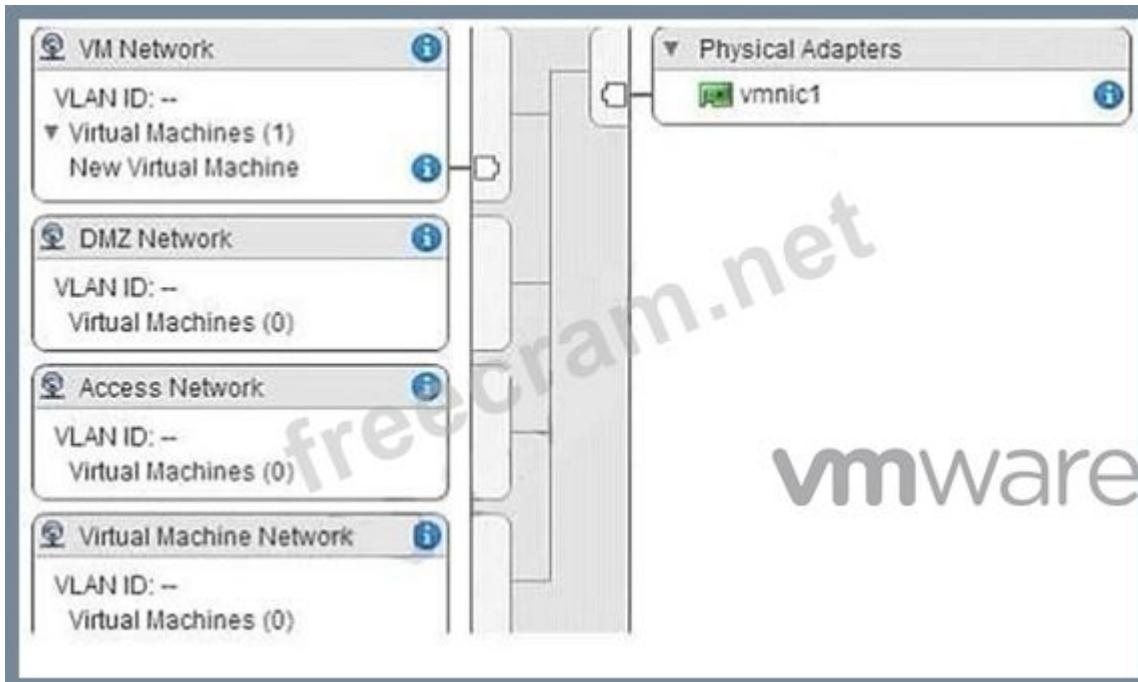
What can be done to correct the issue?

- A. Delete the existing alarm and create a new event based alarm.
- B. Edit the alarm and select Trigger if ALL of the following conditions are satisfied.
- C. Edit the alarm and select Trigger if ANY of the following conditions are satisfied.
- D. Create two separate alarms, one for CPU and one for memory.

Answer: (SHOW ANSWER)

NEW QUESTION: 8

Refer to the Exhibit. A vSphere 6.x Standard Switch is configured with 4 virtual machine portgroups, as shown in the exhibit.



Which portgroup would be utilized by default when creating a new virtual machine?

- A. Access Network
- B. DMZ Network
- C. VM Network
- D. Virtual Machine Network

Answer: (SHOW ANSWER)

Explanation/Reference:

Explanation:

The answer is Access Network because it selects the portgroup based on the first letter according to the alphabet

NEW QUESTION: 9

Which two statements are correct when licensing an ESXi 6.x host? (Choose two.)

- A. ESXi licenses can only be applied to ESXi hosts connected to a vCenter Server.
- B. Bulk licensing requires vSphere PowerCLI.
- C. ESXi licenses can be assigned utilizing the ESXi host client.
- D. Bulk licensing requires vSphere Auto Deploy to be enabled.

Answer: B,C ([LEAVE A REPLY](#))

NEW QUESTION: 10

An administrator is performing a scripted installation of ESXi 6.x. In which three locations does the script need to be? (Choose three.)

- A. VVOLs Datastore
- B. NFS
- C. PXE Server
- D. FTP
- E. HTTPS

Answer: ([SHOW ANSWER](#))

NEW QUESTION: 11

VMware tools is failing to install on a Microsoft Windows virtual machine.

What are two possible situations that would prevent the installation? (Choose two.)

- A. The VMware tools installation media is corrupt.
- B. The prerequisite services have not been started.
- C. The software prerequisites have not been installed.
- D. The incorrect Operating System was selected in the virtual machine options.

Answer: ([SHOW ANSWER](#))

NEW QUESTION: 12

What two scenarios will prevent extending a VMDK that is attached to a powered on VM? (Choose two.)

- A. VMDK has snapshots present.
- B. VMDK is connected using LSI logic SAS controller.
- C. VMDK is connected using IDE controller.
- D. VMDK is running an unsupported Guest OS.

Answer: ([SHOW ANSWER](#))

Explanation/Reference:

Reference: <https://kb.vmware.com/s/article/1004071>

NEW QUESTION: 13

ESXi supports which three iSCSI adapters? (Choose three.)

- A. Software
- B. Protocol Endpoint

- C. FCoE
- D. Dependent Hardware
- E. Independent Hardware

Answer: (SHOW ANSWER)

Explanation/Reference:

Reference: <https://docs.vmware.com/en/VMware-vSphere/5.5/com.vmware.vsphere.storage.doc/GUID-C476065E-C02F-47FA-A5F7-3B3F2FD40EA8.html>

NEW QUESTION: 14

Which three object types can be stored in the Content Library? (Choose three.)

- A. vDS backups
- B. VM templates
- C. vAPP templates
- D. ISO files

Answer: (SHOW ANSWER)

Explanation/Reference:

Reference: <https://virtualizationreview.com/articles/2015/07/02/how-to-use-the-vcenter-6-content-library.aspx>

NEW QUESTION: 15

An administrator needs to monitor traffic on vSwitches in a vSphere 6.x environment.

Which option, if configured, would accomplish this task?

- A. Forged Transmits
- B. MAC Address Changes
- C. Promiscuous Mode
- D. Notify Switches

Answer: (SHOW ANSWER)

Explanation/Reference:

Reference: <https://kb.vmware.com/s/article/1002934>

NEW QUESTION: 16

Which three actions are available in Troubleshooting Mode in the ESXi Direct Console User Interface (DCUI)? (Choose three.)

- A. Modify SSH timeout.
- B. Modify Password.
- C. Modify DCUI idle timeout.
- D. Restart Management Network.
- E. Enable ESXi Shell.

Answer: A,C,E (LEAVE A REPLY)

Valid 2V0-602 Dumps shared by ExamDiscuss.com for Helping Passing 2V0-602 Exam!
ExamDiscuss.com now offer the **newest 2V0-602 exam dumps**, the ExamDiscuss.com 2V0-602 exam **questions have been updated** and **answers have been corrected** get the **newest** ExamDiscuss.com 2V0-602 dumps with Test Engine here:
<https://www.examdiscuss.com/VMware/exam/2V0-602/premium/> (**385 Q&As Dumps, 35%OFF**
Special Discount Code: freecram)

NEW QUESTION: 17

What are two ways to identify TCP/IP stack information? (Choose two.)

- A. Using the vSphere Web Client
- B. Using esxcfg-netstack
- C. Using the vSphere Client
- D. Using esxcli network ip netstack

Answer: (SHOW ANSWER)

NEW QUESTION: 18

An administrator is moving a virtual machine into a resource pool. The VM and resource pool are configured as shown:

VM configuration:

- 2 GHz CPU reservation
- 1 GB Memory limit

Resource Pool configuration:

- 6 GHz CPU reservation
- 1 GB Memory reservation
- No limit to memory

What happens to the virtual machine's resource settings when it is moved into the pool?

- A. The VM inherits the resource settings of the resource pool if expandable reservations is enabled.
- B. The VM keeps the 2GHz CPU reservation and the 1GB Memory limit.
- C. The VM's reservations and limits are ignored and removed.
- D. The VM keeps the 2GHz CPU reservation but receives the 1GB memory reservation.

Answer: (SHOW ANSWER)

NEW QUESTION: 19

Which vSphere 6 Enterprise Edition feature will allow an organization to ensure that critical multi-threaded applications have the maximum possible uptime?

- A. Distributed Resource Scheduler
- B. High Availability
- C. Fault Tolerance
- D. App HA

Answer: (SHOW ANSWER)

NEW QUESTION: 20

Which two Identity Sources are available to add for vCenter Single Sign-On authentication? (Choose two.)

- A. LocalOS
- B. NIS as an LDAP Server
- C. OpenLDAP
- D. VCMSDS

Answer: ([SHOW ANSWER](#))

NEW QUESTION: 21

An organization has an ESXi 6.x host that contains two resource pools. The host is being relocated to a DRS cluster.

What two actions can be taken to integrate the host into the cluster, and what would happen to the existing ESXi resource pool hierarchy as a result? (Choose two.)

- A. Place all of the host's virtual machines into the DRS cluster root resource pool. The resource pools present on the host will be deleted.
- B. Create a resource pool for the ESXi host's virtual machines and resource pools. The resource pools present on the host will be deleted.
- C. Place all of the host's virtual machines into the DRS cluster root resource pool. The resource pools present on the host will be preserved.
- D. Create a resource pool for the ESXi host's virtual machines and resource pools. The resource pools present on the host will be preserved.

Answer: ([SHOW ANSWER](#))

Explanation/Reference:

Reference: <https://pubs.vmware.com/vsphere-51/index.jsp?topic=%2Fcom.vmware.vsphere.vcenterhost.doc%2FGUID-0BCBA61B-8DCE-4069-B003-95E7F9353B16.html>

NEW QUESTION: 22

Users of an application are reporting performance issues.

The following performance values are observed in the vSphere Web Client:

Host CPU utilization is 90%

▪

Virtual Machine memory utilization is consistently greater than 90%

▪

CPU Ready values are higher than 20%

▪

What could be the cause of the application performance issue?

- A. The virtual machine is lacking the CPU resources required to meet the demand.
- B. The host is lacking the memory resources required to meet the demand.
- C. The virtual machine is lacking the memory resources required to meet the demand.
- D. The host is lacking the CPU resources required to meet the demand.

Answer: ([SHOW ANSWER](#))

NEW QUESTION: 23

A vSphere Administrator notices that one of the virtual machines has been configured for VMDirectPath I/O, and a physical NIC has been assigned to the VM.

What feature is not available to this VM?

- A. Virtual Machine Compatibility version upgrades
- B. vMotion
- C. Storage DRS
- D. VMware Tools upgrades

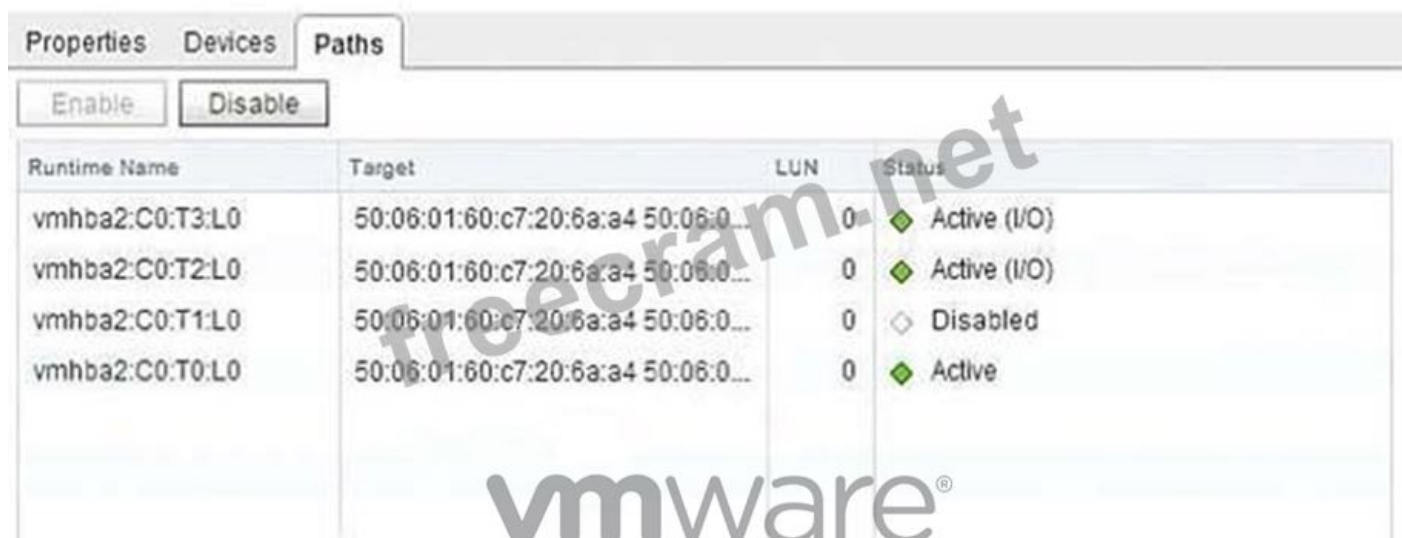
Answer: ([SHOW ANSWER](#))

NEW QUESTION: 24

Refer to the Exhibit. A storage administrator has reported that full utilization of all bandwidth from an ESXi

6.x host is not being seen. In troubleshooting the issue, the Adapter details are shown in the Exhibit.

Adapter Details



The screenshot shows the 'Paths' tab in the vSphere interface. It contains a table with four rows of path information. The first three rows have a status of 'Active (I/O)' or 'Disabled', and the fourth row has a status of 'Active'. The 'vmware' logo is visible in the background of the screenshot.

Runtime Name	Target	LUN	Status
vmhba2:C0:T3:L0	50:06:01:60:c7:20:6a:a4 50:06:0...	0	Active (I/O)
vmhba2:C0:T2:L0	50:06:01:60:c7:20:6a:a4 50:06:0...	0	Active (I/O)
vmhba2:C0:T1:L0	50:06:01:60:c7:20:6a:a4 50:06:0...	0	Disabled
vmhba2:C0:T0:L0	50:06:01:60:c7:20:6a:a4 50:06:0...	0	Active

Based on the exhibit, what is cause of the issue?

- A. There are no virtual machines on the ESXi host.
- B. The array is not setup to use the correct multipathing policy.
- C. Not all links are used because a path is disabled.
- D. Another path needs to be configured.

Answer: ([SHOW ANSWER](#))

NEW QUESTION: 25

A Fault Tolerance (FT) virtual machine with four vCPUs is experiencing high latency when performing ICMP and Application tests.

What are three potential causes that may be attributing to this latency? (Choose three.)

- A. The FT network has insufficient bandwidth and is running on a 1GB Link.
- B. The FT network is on a particularly high latency link.

- C. The FT network has been configured with Network I/O Control.
- D. The FT virtual machine is running an e1000 network adapter.
- E. The FT virtual machine is running on poor performing network-based storage.

Answer: (SHOW ANSWER)

Explanation/Reference:

Reference: <https://docs.vmware.com/en/VMware-vSphere/6.5/com.vmware.vsphere.troubleshooting.doc/GUID-6F893381-BD0B-4825-B4CD-414854A9D9D9.html>

NEW QUESTION: 26

A vSphere Administrator attempts to remove a host from a vSphere distributed switch, and fails. There is a notification that resources are still in use.

What are two possible causes? (Choose two.)

- A. There are virtual machine network adapters connected to the distributed switch.
- B. There are VMkernel adapters on the distributed switch that are in use.
- C. The administrator does not have sufficient rights to remove the host from the distributed switch.
- D. The ESXi host has a virtual machine with over 256 GB RAM assigned.

Answer: (SHOW ANSWER)

Explanation/Reference:

Reference: <https://docs.vmware.com/en/VMware-vSphere/6.0/com.vmware.vsphere.troubleshooting.doc/GUID-038AC93F-D710-48ED-8E3B-258A23FB2930.html>

NEW QUESTION: 27

Which three items should be validated prior to installing ESXi 6.x? (Choose three.)

- A. Network cards have been setup to use Jumbo Frames.
- B. Server hardware clock is set to UTC.
- C. Storage has been partitioned with a VMFS volume.
- D. Installation media is available.
- E. Remote Storage has been disconnected.

Answer: (SHOW ANSWER)

NEW QUESTION: 28

An administrator is evaluating whether to deploy vCenter Server on a Windows server or on a vCenter Server appliance. The administrator has the following requirements:

- A web browser will be utilized to manage the vSphere environment.
- 16 ESXi hosts will be deployed.
- Licenses must be shared with a vCenter Server at another site.
- An external Oracle 10g database server will be used to host the vCenter Server database.

Why will the administrator need to deploy vCenter Server on a Windows server?

- A. Linked Mode is a requirement for the solution.

- B. Oracle 10g is a requirement for the solution.
- C. The vSphere web client is a requirement for the solution.
- D. Management of more than 5 hosts is a requirement for the solution.

Answer: (SHOW ANSWER)

Explanation/Reference:

Explanation:

Since licenses will be shared with a vCenter Server at another site, linked mode would be required. Link mode joins multiple vCenter Server sites and allows them to share information.

NEW QUESTION: 29

Which two statements are true when configuring a virtual flash resources (vFlash)? (Choose two.)

- A. vSphere DRS does not support vFlash resources.
- B. Only Shared Storage can be configured as a virtual flash resource.
- C. vFlash resources are managed at the ESXi host level.
- D. Virtual Machines cannot reside on the virtual flash resource.

Answer: (SHOW ANSWER)

NEW QUESTION: 30

A physical Windows 2008 R2 Server is converted to a virtual machine using VMware vCenter Converter.

Upon completion of the conversion and subsequent power on operation, the virtual machine fails to boot and the message below is observed in the Console of the virtual machine:

STOP 0x0000007B INACCESSIBLE_BOOT_DEVICE

Which two potential issues may be causing this boot failure? (Choose two.)

- A. An incorrect SCSI controller was selected during conversion.
- B. Incompatible software drivers were migrated into the virtual machine from the source machine.
- C. The vmrk file backing the virtual machine was thick provisioned.
- D. A snapshot was taken immediately after the conversion completed.

Answer: (SHOW ANSWER)

Explanation/Reference:

Reference: <https://kb.vmware.com/s/article/1013975>

NEW QUESTION: 31

When adding a new VLAN to an existing virtual distributed switch, which three steps are necessary? (Choose three.)

- A. Right click the vDS and select Distributed Port Group, then select New Distributed Port Group.
- B. Right click on the data center, select Distributed Switch, select New Distributed Switch.
- C. Specify the number of physical uplinks from the vDS to the VLAN.
- D. Specify the VLAN ID and VLAN type.
- E. Provide a name for the Distributed Port Group.

Answer: (SHOW ANSWER)

Valid 2V0-602 Dumps shared by ExamDiscuss.com for Helping Passing 2V0-602 Exam!
ExamDiscuss.com now offer the **newest 2V0-602 exam dumps**, the ExamDiscuss.com 2V0-602 exam **questions have been updated** and **answers have been corrected** get the **newest** ExamDiscuss.com 2V0-602 dumps with Test Engine here:
<https://www.examd Discuss.com/VMware/exam/2V0-602/premium/> (**385 Q&As Dumps, 35%OFF**
Special Discount Code: freecram)

NEW QUESTION: 32

What are two possible causes of Storage Distributed Resource Scheduler (SDRS) being disabled on one or more virtual machine disks in a datastore cluster? (Choose two.)

- A. The virtual machine has vSphere Fault Tolerance disabled.
- B. The virtual machine is a template.
- C. The virtual machine swap file is on a shared datastore.
- D. The disk is a CD-ROM/ISO file.

Answer: (SHOW ANSWER)

Explanation/Reference:

Reference: <https://docs.vmware.com/en/VMware-vSphere/6.0/com.vmware.vsphere.troubleshooting.doc/GUID-B749AAA0-7B67-4A79-BEDC-395DFEC9FC60.html>

NEW QUESTION: 33

Which two statements are true about VMFS5 datastores on ESXi 6.x? (Choose two.)

- A. Only Physical Mode Raw Device Map (Passthrough-RDM) can be larger than 2TB.
- B. Virtual Disk (VMDK) size can be larger than 2TB.
- C. Datastore extent size can be larger than 2TB.
- D. 2MB block size is required to support larger than 2TB file size.

Answer: (SHOW ANSWER)

NEW QUESTION: 34

What may be a cause for failure to unmount an NFS datastore?

- A. It has active snapshot files.
- B. It is being used for High Availability (HA) heartbeat.
- C. It is part of a Cluster.
- D. It is managed by Distributed Resource Scheduler (DRS).

Answer: (SHOW ANSWER)

NEW QUESTION: 35

Which load balancing policy, previously limited to vSphere Distributed Switches, is now available on vSphere Standard Switches with vSphere 6.x?

- A. Route based on physical NIC workload
- B. Route based on IP Hash
- C. Route based on the originating virtual port
- D. Route based on Source MAC Hash

Answer: ([SHOW ANSWER](#))

Explanation/Reference:

Compare both standard and distributed switch in the 5.1 version documentation (first link) to the 6.0 version documentation (second link) below:

<https://pubs.vmware.com/vsphere-51/index.jsp?topic=%2Fcom.vmware.vsphere.networking.doc%2FGUID-D5EA6315-5DCD-463E-A701-B3D8D9250FB5.html>

<https://docs.vmware.com/en/VMware-vSphere/6.0/com.vmware.vsphere.networking.doc/GUID-D34B1ADD-B8A7-43CD-AA7E-2832A0F7EE76.html>

NEW QUESTION: 36

Which Single Sign-On deployment mode should an administrator use for two 6.x vCenter Servers configured with linked mode?

- A. Multisite Single Sign-On
- B. Basic Single Sign-On with vCenter Server Heartbeat
- C. Basic Single Sign-On
- D. Single Sign-On with Linked Mode

Answer: A ([LEAVE A REPLY](#))

NEW QUESTION: 37

What two utilities provide a VMware vSphere 6.x Administrator a detailed look at how ESXi uses resources in real time? (Choose two.)

- A. Esxtop
- B. Vim-cmd
- C. Resxtop
- D. Esxcli

Answer: ([SHOW ANSWER](#))

Explanation/Reference:

Reference: <https://pubs.vmware.com/vsphere-51/index.jsp?topic=%2Fcom.vmware.vsphere.monitoring.doc%2FGUID-A31249BF-B5DC-455B-AFC7-7D0BBD6E37B6.html>

NEW QUESTION: 38

A company has decided to implement Virtual SAN within their vSphere 6.x environment.

The Virtual SAN cluster will be composed of three ESXi 6.x hosts that are on the Virtual SAN Ready Node list.

Each ESXi host includes:

Two SAS Controllers that support Passthrough Mode

▪

Four Solid State Drives (SSDs) 1TB in size each

20 SAS Magnetic Disks (MDs) 1TB in size each

The SSDs and MDs are evenly split between the two SAS controllers

The company will pilot a Virtual SAN cluster utilizing VMware best practices while maximizing storage capacity. The Virtual SAN cluster will use Manual Mode.

Which two Disk Group configurations would meet the stated configuration requirements? (Choose two.)

- A. 2 disk groups with 1 SSD and 10 MDs each
- B. 2 disk groups with 1 SSD and 7 MDs each
- C. 4 disk groups with 1 SSD and 5 MDs each
- D. 2 disk groups with 2 SSDs and 7 MDs each

Answer: ([SHOW ANSWER](#))

NEW QUESTION: 39

A VMware vSphere 6.x Administrator is tasked with configuring vRealize Log Insight.

What three ports can be used for syslog? (Choose three.)

- A. 514/UDP
- B. 1514/TCP
- C. 8443/TCP
- D. 514/TCP
- E. 123/UDP

Answer: ([SHOW ANSWER](#))

Explanation/Reference:

Reference: <https://pubs.vmware.com/log-insight-43/index.jsp?topic=%2Fcom.vmware.log-insight.administration.doc%2FGUID-848E4804-3837-4D5E-956E-2216B17376AD.html>

NEW QUESTION: 40

Which two statements are true about deploying and using vSphere Replication? (Choose two.)

- A. ESXi hosts managed by a single vCenter Server instance require a connection between the two vSphere Replication appliances.
- B. ESXi hosts managed by a single vCenter Server instance require a single vSphere Replication appliance.
- C. Sites managed by different vCenter Server instances require a connection between the two vSphere Replication appliances.
- D. Sites managed by different vCenter Server instances require the use of Site Recovery Manager and a connection between the two vSphere Replication appliances.

Answer: ([SHOW ANSWER](#))

NEW QUESTION: 41

An administrator has recently installed a new ESXi 6.x Host, and during the configuration notices sporadic network problems. To check whether the issue occurred sometime during the configuration, the administrator would like to reset the system.

How can this be accomplished in the shortest amount of time?

- A. Use a host profile to reset the configuration to a default state.
- B. From the Direct Console User Interface, select Reset System Configuration.
- C. Run the ESXi installer again and reinstall the host.
- D. Select the Reset System Configuration option from the vSphere Client when connected directly to the host.

Answer: ([SHOW ANSWER](#))

NEW QUESTION: 42

What information is required as part of an interactive ESXi 6.x installation?

- A. Keyboard layout
- B. IP Address
- C. Root password
- D. DNS information

Answer: ([SHOW ANSWER](#))

Explanation/Reference:

Reference: <https://docs.vmware.com/en/VMware-vSphere/6.5/com.vmware.vsphere.install.doc/GUID-4CBEADFB-FBBD-49B6-A39C-FC810ECC1E49.html>

NEW QUESTION: 43

An administrator deploys vRealize Operations into a vSphere 6.x environment.

After the deployment, the administrator notices that badges are not appearing.

What is a likely cause of this behavior?

- A. Badges do not appear until you register a vCenter Server in vRealize Operations.
- B. Badges do not appear until you register vRealize Operations with vCenter Server.
- C. The vRealize Operations appliance needs to be redeployed.
- D. The vCenter Server appliance needs to be redeployed.

Answer: ([SHOW ANSWER](#))

NEW QUESTION: 44

Which option is true during a virtual machine cold migration?

- A. Data is transferred over the vMotion VMKernel interface.
- B. The datastore of the virtual machine cannot be changed.
- C. Migrating a virtual machine from an Intel-based host to a AMD-based host generates an error.
- D. Migrating a 64-bit virtual machine to a 32-bit host generates a warning.

Answer: ([SHOW ANSWER](#))

Explanation/Reference:

Reference: <https://docs.vmware.com/en/VMware-vSphere/6.0/com.vmware.vsphere.vcenterhost.doc/GUID-98C18721-A4B0-4BD2-96BF-1BBC29391B3E.html>

NEW QUESTION: 45

What is the maximum supported RAM per virtual machine (VM) in vSphere 6.5?

- A. 6128 GB
- B. 2048 GB
- C. 8192 GB
- D. 4096 GB

Answer: (SHOW ANSWER)

Explanation/Reference:

Reference: <https://www.vmware.com/pdf/vsphere6/r65/vsphere-65-configuration-maximums.pdf> (page 9)

NEW QUESTION: 46

What is required when changing a virtual machine name using the vSphere Web Client?

- A. Verify the virtual machine is not running in Fault Tolerant mode and that it is not in a Distributed Resource Scheduler cluster.
- B. Verify in which datastore the virtual machine resides and that you have access and its inventory list is accessible.
- C. Verify connectivity to the ESXi host where the virtual machine is running and its inventory list is accessible.
- D. Verify that virtual machine files are stored in the same datastore and can be accessed in the datastore browser list.

Answer: (SHOW ANSWER)

Valid 2V0-602 Dumps shared by ExamDiscuss.com for Helping Passing 2V0-602 Exam!
ExamDiscuss.com now offer the **newest 2V0-602 exam dumps**, the ExamDiscuss.com 2V0-602 exam **questions have been updated** and **answers have been corrected** get the **newest** ExamDiscuss.com 2V0-602 dumps with Test Engine here:

<https://www.examdisscuss.com/VMware/exam/2V0-602/premium/> (**385 Q&As Dumps, 35%OFF**)

Special Discount Code: freecram)

NEW QUESTION: 47

Which three are architecture components of vRealize Operations? (Choose three.)

- A. Identity Server
- B. Administrative Server
- C. Analytics Server
- D. Database Server

E. Connection Broker

Answer: ([SHOW ANSWER](#))

NEW QUESTION: 48

An administrator is performing an interactive installation of ESXi 6.x. Which three options are available for installation? (Choose three.)

- A. Scripted
- B. PXE
- C. Auto Deploy
- D. USB
- E. DVD

Answer: ([SHOW ANSWER](#))

NEW QUESTION: 49

An administrator is upgrading a vSphere Distributed Switch. The existing switch is version 5.0 and the administrator wants to upgrade to the latest version possible. The environment contains several ESXi 5.1 hosts.

Which two options are available to ensure that the upgraded switch will be compatible with these hosts? (Choose two.)

- A. Upgrade the ESXi 5.1 hosts to version 5.5, then upgrade the vSphere Distributed Switch to 5.5
- B. Upgrade the vSphere Distributed Switch to 5.5
- C. Upgrade the vSphere Distributed Switch to 5.1
- D. Upgrade the ESXi host switches to 5.5, then upgrade the vSphere Distributed Switch to 5.5

Answer: ([SHOW ANSWER](#))

NEW QUESTION: 50

A vApp is running out of compute resources when overall activity is high within the resource pool. At other times, everything is fine.

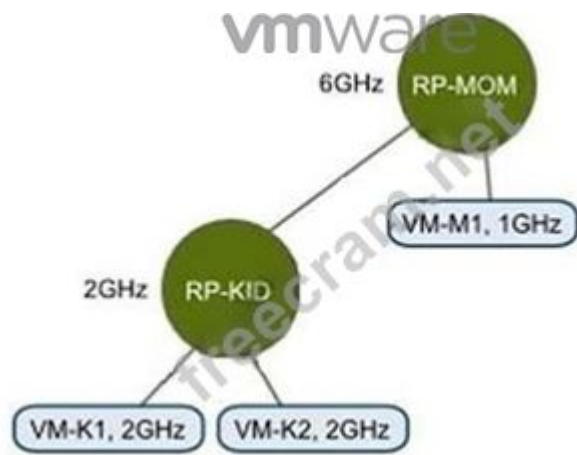
What should be done to resolve this issue?

- A. Create a new resource pool with the existing hardware configuration.
- B. Set the vApp's CPU and Memory Reservation Type to Expandable.
- C. Set the vApp's CPU and Memory Limit to Unlimited.
- D. Increase the size of the resource pool Shares.

Answer: ([SHOW ANSWER](#))

NEW QUESTION: 51

Refer to the Exhibit. An administrator has created the resource pool configuration shown in the Exhibit.



Based on the exhibit, which virtual machine(s) can be successfully powered on?

- A. VM-M1 only
- B. VM-K1 only
- C. VM-K1, VM-K2, and VM-M1
- D. VM-K1 and VM-K2 only

Answer: ([SHOW ANSWER](#))

NEW QUESTION: 52

What are two valid iSCSI discovery methods? (Choose two.)

- A. Assigned Discovery
- B. Automatic Discovery
- C. Static Discovery
- D. LUN Masking
- E. Dynamic Discovery

Answer: ([SHOW ANSWER](#))

Explanation/Reference:

Reference <https://docs.vmware.com/en/VMware-vSphere/6.5/com.vmware.vsphere.storage.doc/GUID-66215AF3-2D81-4D1F-92D4-B9623FC1CB0E.html>

NEW QUESTION: 53

A vSphere administrator has been using vSphere in evaluation mode and now wants to deploy an environment that provides the same features.

Which edition of vSphere provides similar functionality to evaluation mode?

- A. Essentials
- B. Enterprise Plus
- C. Standard
- D. Enterprise

Answer: ([SHOW ANSWER](#))

NEW QUESTION: 54

Which three VLAN Tagging modes are available in vSphere 6.x? (Choose three.)

- A. External Switch Tagging
- B. VXLAN Tagging
- C. Private VLAN Tagging
- D. Virtual Guest Tagging
- E. Virtual Switch Tagging

Answer: ([SHOW ANSWER](#))

NEW QUESTION: 55

vMotion can be performed between which three physical boundaries? (Choose three.)

- A. Between two vCenter Server Systems
- B. Between two vSphere Distributed Virtual Switches
- C. Between two vCenter Server Datacenter objects
- D. Between two VMware NSX Layer 4 segments
- E. Between two NFS datastores

Answer: ([SHOW ANSWER](#))

Explanation/Reference:

Reference: <https://vinfrastructure.it/2015/02/vmware-vsphere-6-vmotion-everywhere/>

NEW QUESTION: 56

What must be enabled to ensure that VM Component Protection (VMCP) works in a High Availability cluster?

- A. VMware Tools Virtual Machine Communication Interface (VMCI)
- B. Fault Tolerance
- C. Atomic Test and Set (ATS)
- D. All Paths Down (APD) Timeout

Answer: ([SHOW ANSWER](#))

Explanation/Reference:

Reference: <https://docs.vmware.com/en/VMware-vSphere/6.0/com.vmware.vsphere.avail.doc/GUID-F01F7EB8-FF9D-45E2-A093-5F56A788D027.html>

NEW QUESTION: 57

What is the maximum supporter number of vCPU per VM in VMware vSphere 6.5?

- A. 256
- B. 128
- C. 32
- D. 64

Answer: ([SHOW ANSWER](#))

Explanation/Reference:

Reference: <https://www.vmware.com/pdf/vsphere6/r65/vsphere-65-configuration-maximums.pdf>

NEW QUESTION: 58

Which two Virtual SAN related actions might start resynchronization of virtual machine objects?
(Choose two.)

- A. Editing a virtual machine storage policy to increase the number of replicas.
- B. Editing a virtual machine storage policy to reduce the number of replicas.
- C. Editing a virtual machine storage policy to increase the number of disk stripes.
- D. Editing a virtual machine storage policy to reduce the number of disk stripes.

Answer: (SHOW ANSWER)

Explanation/Reference:

Reference: <https://docs.vmware.com/en/VMware-vSphere/6.0/com.vmware.vsphere.virtualsan.doc/GUID-04ED9C07-BC61-4E3C-9188-9D2E460C9CA3.html>

NEW QUESTION: 59

A vSphere Administrator wants to enable Storage I/O Control. There is a mix of VMFS and NFS datastores. All of the VMFS datastores have hardware acceleration enabled. The Administrator attempts to create a new datastore cluster but is unable to add all of the datastores to the cluster.

What is the problem?

- A. NFS datastores cannot participate in a datastore cluster.
- B. One of the hosts is currently in maintenance mode.
- C. NFS and VMFS datastores cannot be mixed in a datastore cluster.
- D. Datastores with hardware acceleration enabled cannot participate in a datastore cluster.

Answer: C (LEAVE A REPLY)

Explanation/Reference:

Reference: <https://docs.vmware.com/en/VMware-vSphere/6.5/com.vmware.vsphere.resmgmt.doc/GUID-34A10B42-C79E-491C-A5AA-99E3B5FA2278.html>

NEW QUESTION: 60

The vSphere administrator is configuring directory services for an ESXi host:



What should the vSphere administrator do to configure the host to use CAM services?

- A. Set Trusted Domains to cam\name.tld where name.tld is the domain that the host is joining.
- B. Set Select Directory Service Type to CAM services.
- C. Check the Use vSphere Authentication Proxy checkbox.
- D. Specify CAM\$ for the Domain.

Answer: ([SHOW ANSWER](#))

NEW QUESTION: 61

Which of the following options are configurable in a Resource Pool? (Choose two.)

- A. CPU affinity
- B. CPU Shares
- C. Startup/Shutdown order
- D. Memory Limit

Answer: ([SHOW ANSWER](#))

exam **questions have been updated** and **answers have been corrected** get the **newest** ExamDiscuss.com 2V0-602 dumps with Test Engine here:
<https://www.examdisscuss.com/VMware/exam/2V0-602/premium/> (385 Q&As Dumps, **35%OFF**
Special Discount Code: freecram)

NEW QUESTION: 62

A High Availability (HA) cluster is configured to respond to a given number of host failures.

The cluster contains virtual machines configured with these settings:

- VM1 has a 1GHz CPU reservation and no Memory reservation
- VM2 has a 2GHz CPU reservation and no Memory reservation
- VM3 has no CPU reservation and no Memory reservation

Given this information, what is the correct slot size for the cluster?

- A.** The CPU reservation should be set to 2 GHz, and the memory reservation should be set to 0MB plus the virtual machine memory overhead.
- B.** The CPU reservation should be set to 1 GHz and the memory reservation should be set to 0MB plus memory overhead.
- C.** The CPU reservation should be set to 2 GHz, and the memory reservation should be set to 32MB, plus the virtual machine memory overhead.
- D.** The CPU Reservation should be set to 32MHz and the memory reservation should be set to 32MB plus memory overhead.

Answer: (SHOW ANSWER)

NEW QUESTION: 63

An administrator has configured an alarm to be notified when a virtual machine meets either of these conditions:

High virtual CPU

High active memory consumption.

The alarm is only triggering when both of the conditions are met.

What can be done to correct the alarm behavior?

- A.** Create two separate alarms, one for CPU and one for memory and link them together with ESXCLI.
- B.** Edit the alarm and select Trigger if ANY of the following conditions are satisfied.
- C.** Edit the alarm and select Trigger if ALL of the following conditions are satisfied.
- D.** Delete the existing alarm and create a new event based alarm.

Answer: (SHOW ANSWER)

NEW QUESTION: 64

Which key combination will let a vSphere Administrator revert to the previous version or build of ESXi?

- A.** Shift+R
- B.** Ctrl+R
- C.** Shift+V
- D.** Ctrl+Z

Answer: (SHOW ANSWER)

Explanation/Reference:

Reference: <https://kb.vmware.com/s/article/1033604>

NEW QUESTION: 65

A vSphere Administrator has stated that currently Private VLAN is utilized to prevent cross-talk on the dedicated backup network.

What two actions are required to implement Private VLAN in VMware vSphere? (Choose two.)

- A. Enable Promiscuous Mode.
- B. Configure Private VLAN at the dvSwitch level.
- C. Upgrade to VMware vSphere Enterprise Plus.
- D. Configure Private VLAN at the dvPort Group.

Answer: (SHOW ANSWER)

NEW QUESTION: 66

A Primary Fault Tolerant VM is performing poorly despite its ESXi host having adequate resources and CPUs are idle. Other hosts in the cluster are much more heavily utilized.

What is the cause?

- A. The vMotion network has not been configured for Jumbo Frames.
- B. The Secondary VM is running more applications than the Primary.
- C. The Secondary VM is running on an ESXi host that is overcommitted.
- D. The Secondary VM is assigned to a different portgroup than the Primary.

Answer: (SHOW ANSWER)

NEW QUESTION: 67

Your manager has given you a bash script that retrieves data for ESXi 6.x host configurations.

This data needs to be collected right after the installation of a host and must be run directly on the host.

Which two actions can be used to run this script on an ESXi host? (Choose two.)

- A. Enable SSH access from the Direct Console User Interface.
- B. Connect to the host with Ruby vSphere Console and run the script from there.
- C. Enable the ESXi Shell from the Direct Console User Interface.
- D. Run the script directly from the vSphere Web Client.

Answer: (SHOW ANSWER)

NEW QUESTION: 68

You are editing the management network configuration of an ESXi 6.x Host from the vSphere Web Client.

You mistakenly put the incorrect VLAN in place for the management network.

What action do you need to take to correct this?

- A. You need to manually edit the configuration on the host with command line utilities.
- B. No action is required. By default, ESXi rolls back configuration changes that disconnect the host.

C. The ESXi host system configuration will need to be restored to the factory configuration to fix the issue.

D. The change can be reverted in the vSphere Web Client by simply editing the switch again.

Answer: (SHOW ANSWER)

Explanation/Reference:

Explanation:

By rolling configuration changes back, vSphere protects hosts from losing connection to vCenter Server as a result from misconfiguration of the management network. In this case, configuring the wrong VLAN on the management network would result in a lost connection to the server.

Reference: <https://docs.vmware.com/en/VMware-vSphere/6.5/com.vmware.vsphere.networking.doc/GUID-8BA411A4-8582-4C02-8489-D3D7D09A9BF0.html>

NEW QUESTION: 69

VM Components Protection (VMCP) can provide automated recovery for which two virtual machine failures? (Choose two.)

A. All Paths Down

B. Permanent Device Loss

C. Firmware failures

D. Driver Failures

Answer: (SHOW ANSWER)

Explanation/Reference:

Reference: <https://docs.vmware.com/en/VMware-vSphere/6.0/com.vmware.vsphere.avail.doc/GUID-F01F7EB8-FF9D-45E2-A093-5F56A788D027.html>

NEW QUESTION: 70

An administrator is deploying multiple Windows 2003 Virtual Machines from the same template. What two steps should be taken to avoid network conflicts? (Choose two.)

A. Customize the guest operating system.

B. Install VMware Tools into the new virtual machines.

C. Copy the Microsoft Sysprep tools onto the vCenter Server system.

D. Ensure the e1000 vmnic is selected for each new virtual machine.

Answer: (SHOW ANSWER)

Explanation/Reference:

Explanation: https://docs.vmware.com/en/VMware-vSphere/6.0/com.vmware.vsphere.vm_admin.doc/GUID-F3E382AB-72F6-498A-BD26-7EC0BFE320A0.html

NEW QUESTION: 71

Which three limits can restrict the maximum number of simultaneous migrations that can occur in a vSphere environment? (Choose three.)

A. Datastore limits

- B. RAM limits
- C. CPU limits
- D. Network limits
- E. Host limits

Answer: (SHOW ANSWER)

Explanation/Reference:

Reference: <https://docs.vmware.com/en/VMware-vSphere/6.0/com.vmware.vsphere.vcenterhost.doc/GUID-25EA5833-03B5-4EDD-A167-87578B8009B3.html>

NEW QUESTION: 72

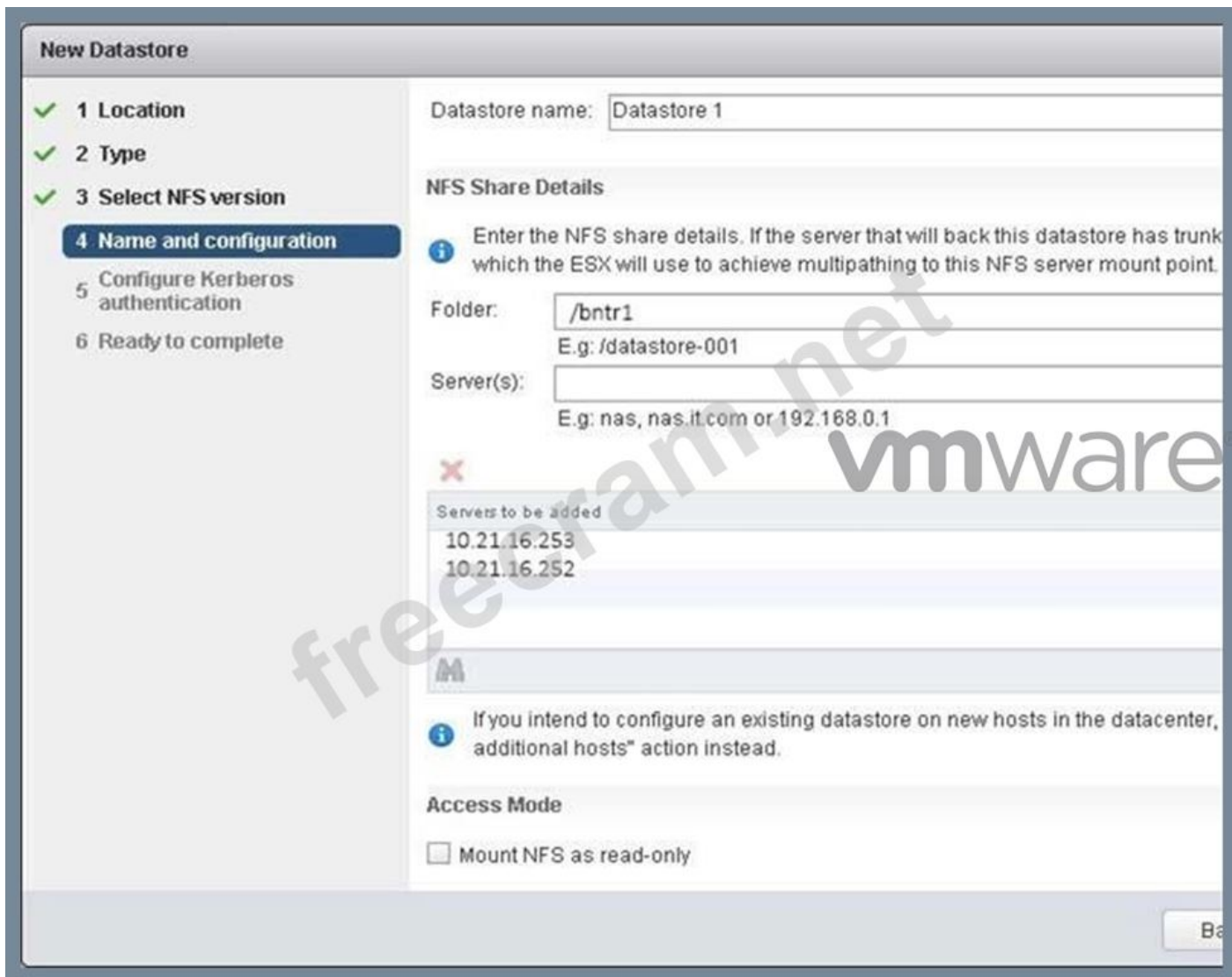
Which type of Adapter does not require vmkernel networking?

- A. Software iSCSI Adapter
- B. Dependent Hardware iSCSI Adapter
- C. Independent Hardware iSCSI Adapter
- D. Software FCoE Adapter

Answer: (SHOW ANSWER)

NEW QUESTION: 73

Refer to the Exhibit. An administrator is adding an NFS datastore as shown in the Exhibit.



What is the purpose of the Servers to be added list?

- A. It contains the IP addresses of the ESXi hosts that mount the datastore.
- B. It contains the IP addresses used for Dynamic Discovery of targets.
- C. It contains the IP addresses used for Static Discovery of targets.
- D. It contains the IP addresses of the NFS Storage Server to provide multipathing capability.

Answer: ([SHOW ANSWER](#))

NEW QUESTION: 74

What two files are created when the Take snapshot operation is executed? (Choose two.)

- A. .delta.vmdk
- B. .nvram
- C. .vmsn
- D. .lck

Answer: ([SHOW ANSWER](#))

Explanation/Reference:

Reference:

https://pubs.vmware.com/vsphere-51/index.jsp?topic=%2Fcom.vmware.vsphere.vm_admin.doc%2FGUID-

NEW QUESTION: 75

Immediately after installing ESXi, an administrator observes that the Configure Lockdown Mode option is grayed out in the Direct Console User Interface (DCUI).

What is the most likely explanation?

- A. The BIOS on the host does not have NX/XD enabled.
- B. The host requires a reboot before this feature is available.
- C. The ESXi host is running in evaluation mode.
- D. The host has not yet been added to a vCenter Server.

Answer: ([SHOW ANSWER](#))

NEW QUESTION: 76

What is the effective vSphere licensing level during the 60 day evaluation period?

- A. vSphere Enterprise
- B. vSphere Enterprise Plus
- C. vSphere Foundation Essentials Plus
- D. vSphere Standard

Answer: ([SHOW ANSWER](#))

Valid 2V0-602 Dumps shared by ExamDiscuss.com for Helping Passing 2V0-602 Exam!
ExamDiscuss.com now offer the **newest 2V0-602 exam dumps**, the ExamDiscuss.com 2V0-602 exam **questions have been updated** and **answers have been corrected** get the **newest** ExamDiscuss.com 2V0-602 dumps with Test Engine here:

<https://www.examd Discuss.com/VMware/exam/2V0-602/premium/> (**385 Q&As Dumps, 35%OFF**)

Special Discount Code: freecram)

NEW QUESTION: 77

An administrator is monitoring a High Availability (HA) and Distributed Resource Scheduler (DRS) enabled cluster and has noticed that virtual machines in the cluster are being migrated without user intervention.

Why is this happening?

- A. The Power Management feature is configured.
- B. The Automation level is set to Automatic.
- C. The DPM Threshold is set to Aggressive.
- D. The DRS Automation level is set to Fully Automated.

Answer: ([SHOW ANSWER](#))

NEW QUESTION: 78

A user is trying to retrieve objects from a SharePoint server and finds the request is taking an excessive amount of time. An administrator tries to isolate the issue and notes the following:

- Application performance is poor when compared to virtual machines on other hosts.
- Performance improves when the virtual machine is moved to another host.

The virtual machine encounters higher than expected CPU %Ready times.

What conclusion can be reached regarding the performance issues for this virtual machine?

- A.** Host Power Management is directly impacting virtual machine performance.
- B.** The virtual machine has a large number of snapshots.
- C.** The Path Selection Policy for the storage device is set differently on the affected host.
- D.** Network I/O control is configured for the portgroup.

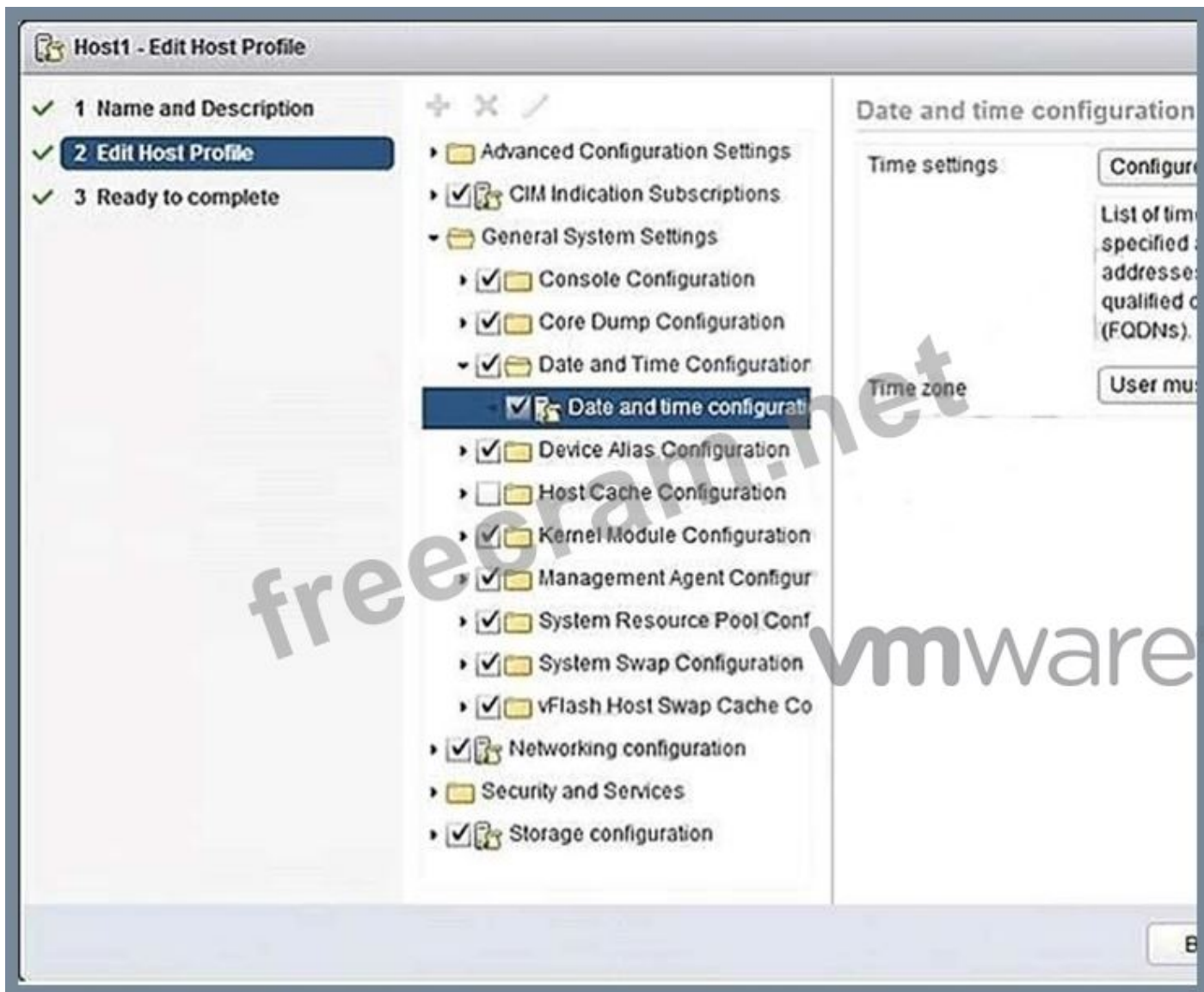
Answer: ([SHOW ANSWER](#))

Explanation/Reference:

Reference: <https://kb.vmware.com/s/article/1018206>

NEW QUESTION: 79

Refer to the Exhibit. An administrator has configured a host profile so that ESXi 6.x hosts will point to the corporate NTP server for time synchronization. The NTP server is located at 10.0.30.213, but time has not been synchronized properly across the ESXi hosts.



The administrator reviews Host Profile settings as shown in the Exhibit.

Which two steps are required to resolve the issue? (Choose two.)

- A. Change the NTP server to the FQDN as IP Addresses are not supported.
- B. Remediate the host based on the updated host profile.
- C. Correct the NTP server IP address.
- D. Check the host for host profile compliance.

Answer: B,C (LEAVE A REPLY)

NEW QUESTION: 80

What two virtual hardware devices can be added to a powered on VM? (Choose two.)

- A. Virtual disk connected using SCSI controller
- B. Virtual disk connected using IDE controller
- C. Network adapter
- D. Serial Port

Answer: (SHOW ANSWER)

Explanation/Reference:

Reference: <https://pubs.vmware.com/vsphere-4-esx-vcenter/>

index.jsp#com.vmware.vsphere.webaccess.doc_41/adding_hardware_to_a_virtual_machine/
t_add_a_network_adapter.html

NEW QUESTION: 81

What component must be installed prior to deploying a vCenter Server in vSphere 6.x?

- A. vCenter Identity Services
- B. Platform Services Controller
- C. vCenter Single Sign-On
- D. Client Integration Plug-In

Answer: (SHOW ANSWER)

Explanation/Reference:

Reference: <https://docs.vmware.com/en/VMware-vSphere/6.0/com.vmware.vsphere.upgrade.doc/GUID-ACCD2814-0F0A-4786-96C0-8C9BB57A4616.html>

NEW QUESTION: 82

Which two parameters are required when adding an iSCSI target to an iSCSI Software Adapter using Dynamic Discovery? (Choose two.)

- A. The iSCSI device's iSCSI Qualified Name (IQN)
- B. The Default Gateway IP Address
- C. The Port Number
- D. The iSCSI device's IP Address or Fully Qualified Domain Name

Answer: (SHOW ANSWER)

NEW QUESTION: 83

VMware vRealize Log Insight can be configured to send notification events to which endpoint?

- A. vRealize Infrastructure Navigator
- B. vRealize Configuration Manager
- C. vRealize Operations Manager
- D. vCenter Server

Answer: (SHOW ANSWER)

Explanation/Reference:

Reference: <https://pubs.vmware.com/log-insight-40/index.jsp?topic=%2Fcom.vmware.log-insight.administration.doc%2FGUID-C73DFC4F-53A6-4F6A-9883-A4916AD3AA80.html>

NEW QUESTION: 84

When modifying a vApp, which two vSphere entities can be added? (Choose two.)

- A. A resource pool
- B. A network pool
- C. A vApp
- D. A folder

Answer: (SHOW ANSWER)

Explanation/Reference:

Reference: [https://docs.vmware.com/en/VMware-](https://docs.vmware.com/en/VMware-vSphere/6.5/com.vmware.vsphere.vm_admin.doc/GUID-E05E8AF9-C8F2-4482-B3F0-733C85C6DD97.html)

[vSphere/6.5/com.vmware.vsphere.vm_admin.doc/GUID- E05E8AF9-C8F2-4482-B3F0-733C85C6DD97.html](https://docs.vmware.com/en/VMware-vSphere/6.5/com.vmware.vsphere.vm_admin.doc/GUID-E05E8AF9-C8F2-4482-B3F0-733C85C6DD97.html)

NEW QUESTION: 85

Which vSphere 6 Standard Edition feature will allow an organization to ensure that critical multi-threaded applications have the maximum possible uptime?

- A. Distributed Resource Scheduler
- B. App HA
- C. Fault Tolerance
- D. High Availability

Answer: (SHOW ANSWER)

NEW QUESTION: 86

An administrator wants to add a web server to an existing multi-tier application consisting of three virtual machines:

A web server

A database server

An application server

The web server should be added to the application when the primary web server reaches:

7 0% vCPU utilization

5 5% active memory

Which option will achieve this result?

- A. Configure HA application monitoring for the web server and set it to trigger deployment of a new instance of the web server.
- B. Create a host cpu and memory alarm with an action to run a script that starts a new instance of the web server.
- C. Configure Fault Tolerance on the virtual machine and leave the secondary machine disabled until needed.
- D. Create a virtual machine alarm with an action to run a script that starts a new instance of the web server.

Answer: (SHOW ANSWER)

NEW QUESTION: 87

VMware vSphere 6.x provides which three capabilities? (Choose three.)

- A. Data center extension
- B. Zero data center clon time
- C. Predictive analytics
- D. Perform live workload migrations
- E. Manage virtual machines with simple and intuitive tools

Answer: C,D,E (LEAVE A REPLY)

NEW QUESTION: 88

Which two choices are VMware-recommended ESXi syslog configurations? (Choose two.)

- A. Remote logging to a central host.
- B. Store logs in the in-memory filesystem.
- C. Configure persistent logging to a datastore.
- D. Configure logging to the vCenter Server.

Answer: (SHOW ANSWER)

Explanation/Reference:

Explanation:

Take the following measures to increase the security of the host.

- Configure persistent logging to a datastore. By default, the logs on ESXi hosts are stored in the in-memory file system. Therefore, they are lost when you reboot the host, and only 24 hours of log data is stored. When you enable persistent logging, you have a dedicated record of server activity available for the host.
- Remote logging to a central host allows you to gather log files onto a central host, where you can monitor all hosts with a single tool. You can also do aggregate analysis and searching of log data, which might reveal information about things like coordinated attacks on multiple hosts.
- Configure remote secure syslog on ESXi hosts using a remote command line such as vCLI or PowerCLI, or using an API client.
- Query the syslog configuration to make sure that a valid syslog server has been configured, including the correct port.

Reference: <https://pubs.vmware.com/vsphere-51/index.jsp?topic=%2Fcom.vmware.vsphere.security.doc%2FGUID-F35D7005-58EB-48AC-99D5-B9942EB2A8EF.html>

NEW QUESTION: 89

Which three features are not supported when using Fault Tolerance in vSphere 6.x? (Choose three.)

- A. Virtual Machine Component Protection
- B. vMotion
- C. vSphere Distributed Switches
- D. Storage vMotion
- E. Virtual Volumes (VVOLS)

Answer: (SHOW ANSWER)

NEW QUESTION: 90

Which two options can be monitored when creating a new Alarm Definition? (Choose two.)

- A. specific actions of a user
- B. other alarms defined for the object
- C. specific conditions or state

D. specific event occurring on the object

Answer: (SHOW ANSWER)

Explanation/Reference:

Reference: <https://docs.vmware.com/en/VMware-vSphere/6.5/com.vmware.vsphere.monitoring.doc/GUID-79AC1262-D701-4BC8-8F8D-F046AE0578CF.html>

NEW QUESTION: 91

What are two uses of the vRealize Log Insight Agents for Windows and Linux? (Choose two.)

- A. Monitor the state of syslog/eventmgr services
- B. Collect events from flat text files
- C. Control the state of the syslog/eventmgr services
- D. Monitor directories with the filesystem

Answer: (SHOW ANSWER)

Explanation/Reference:

Reference: <https://www.altaro.com/vmware/how-to-set-up-vrealize-log-insight-agents-on-windows-and-linux/>

Valid 2V0-602 Dumps shared by ExamDiscuss.com for Helping Passing 2V0-602 Exam!
ExamDiscuss.com now offer the **newest 2V0-602 exam dumps**, the ExamDiscuss.com 2V0-602 exam **questions have been updated** and **answers have been corrected** get the **newest** ExamDiscuss.com 2V0-602 dumps with Test Engine here:

<https://www.examdisscuss.com/VMware/exam/2V0-602/premium/> (**385 Q&As Dumps, 35%OFF**)

Special Discount Code: freecram)

NEW QUESTION: 92

What is a requirement when enabling a Virtual SAN cluster in an existing High Availability (HA) and Distributed Resource Scheduler (DRS) Cluster?

- A. Enable DRS before enabling Virtual SAN
- B. Disable HA before enabling Virtual SAN
- C. Enable Storage DRS before enabling Virtual SAN
- D. Disable DRS and HA before enabling Virtual SAN

Answer: (SHOW ANSWER)

NEW QUESTION: 93

A virtual machine has been renamed and an administrator is unable to find files with the new virtual machine name in the datastore.

What is the reason for this?

- A. The names of the files on the datastore have been corrupted.

- B. The Distributed Resource Scheduler moved the virtual machine to another host.
- C. The names of the files on the datastore do not change.
- D. The virtual machine needs to be re-added to the inventory.

Answer: ([SHOW ANSWER](#))

NEW QUESTION: 94

A vSphere administrator wants to migrate a virtual machine with vMotion from one node to another in the same cluster, but when the destination server is specified, an error message is displayed.

What might be wrong? (Choose two.)

- A. The cluster is configured for EVC and the hosts are of the same processor family
- B. The destination host does not have access to the shared datastore
- C. The source host is not licensed for vMotion
- D. The hosts are licensed for vSphere Essentials Plus
- E. The hosts have a dedicated vMotion VMKernel interface configured

Answer: ([SHOW ANSWER](#))

Explanation/Reference:

Reference: <https://docs.vmware.com/en/VMware-vSphere/6.5/com.vmware.vsphere.vcenterhost.doc/GUID-9F1D4A3B-3392-46A3-8720-73CBFA000A3C.html> Reference:

<https://kb.vmware.com/s/article/2145068>

NEW QUESTION: 95

A vCenter Server displays this error for a single host:

Virtual machine creation may fail because agent is unable to retrieve VM creation options from the host

Which action will allow a vSphere Administrator to resolve the issue?

- A. Log in to the vSphere Web Client, select the ESXi host and manually place it into Quarantine Mode.
- B. Log in to the vCenter Server Appliance Management UI and reboot the VCSA.
- C. Log in to the vSphere Web Client, select the cluster that the ESXi host belongs to and turn off DRS.
- D. Log in to the host DCUI, press F2 and navigate to Troubleshooting Options> Restart management Agents.

Answer: ([SHOW ANSWER](#))

Explanation/Reference:

Reference: <https://kb.vmware.com/s/article/1003490>

NEW QUESTION: 96

Which three options are required to use vSphere DRS features successfully? (Choose three.)

- A. Shared Storage
- B. Processor Compatibility
- C. Datastore Cluster
- D. Shared VMFS Volume
- E. Resource Pools

Answer: ([SHOW ANSWER](#))

Explanation/Reference:

Reference: <https://docs.vmware.com/en/VMware-vSphere/6.0/com.vmware.vsphere.resmgmt.doc/GUID-CAF3CDC4-469F-4FA4-ACFD-24F5F36847EA.html>

NEW QUESTION: 97

Which two statements are Datastore Cluster requirements? (Choose two.)

- A. Datastore clusters can only contain VMFS datastores.
- B. Datastores shared across multiple data centers cannot be included in a datastore cluster.
- C. NFS and VMFS datastores cannot be combined in the same datastore cluster.
- D. Datastore clusters must contain three or more datastores.

Answer: (SHOW ANSWER)

Explanation/Reference:

Reference: <https://pubs.vmware.com/vsphere-51/index.jsp?topic=%2Fcom.vmware.vsphere.resmgmt.doc%2FGUID-34A10B42-C79E-491C-A5AA-99E3B5FA2278.html>

NEW QUESTION: 98

What is a valid plug-in status for a plug-in that has been added to a vSphere client?

- A. Stopped
- B. Unknown
- C. Installed
- D. Disabled

Answer: (SHOW ANSWER)

NEW QUESTION: 99

A vApp template recently added to a Content Library is not displayed.

Which two actions could correct this problem? (Choose two.)

- A. Select the Sync subscribed library option
- B. Manually synchronize the library
- C. Select the Download all library content immediately option
- D. Manually download the vApp template

Answer: (SHOW ANSWER)

NEW QUESTION: 100

What is the VMware recommended way to distribute storage I/O loads across multiple paths to minimize downtime and remove potential bottlenecks?

- A. Configure storage replication.
- B. Configure multipathing.
- C. Enable storage DRS and configure datastore clusters.
- D. Enable Storage I/O Control.

Answer: ([SHOW ANSWER](#))

NEW QUESTION: 101

You need to add an object to an existing vApp using the vSphere Web Client. How is this accomplished?

- A.** Create an Object Inside the vApp.
- B.** Add an Object to a vApp.
- C.** Add an Object to the Datastore the vApp is located in.
- D.** Move all Objects to a new Datastore folder.

Answer: ([SHOW ANSWER](#))

Explanation/Reference:

Explanation:

to add an object to an existing vApp using the vsphere web client, create an object inside vApp or you can add an object to a vApp.

https://pubs.vmware.com/vsphere-50/index.jsp?topic=%2Fcom.vmware.vsphere.vm_admin.doc_50%2FGUID-12FDA1A4-6214-463B-8D73-FE25454C642E.html

NEW QUESTION: 102

Refer to the Exhibit.

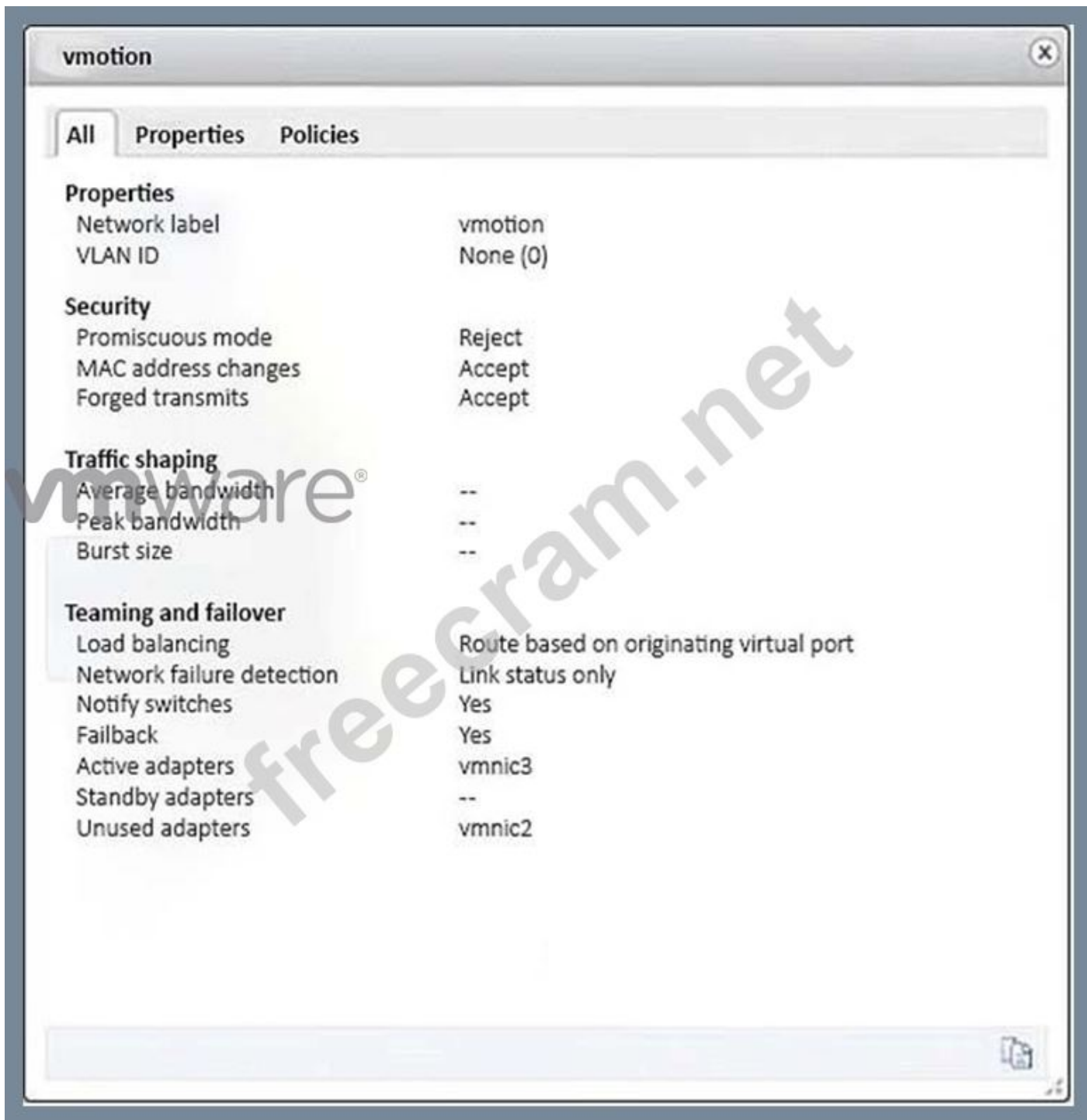
An administrator has been given requirements to configure vMotion for a new virtual machine. The configuration should:

Provide Network Redundancy

Use VLAN 550

Be secured against anyone trying to spoof communication

The vSwitch1 configuration is shown in the Exhibit.



Which three changes should be made to meet the stated requirements? (Choose three.)

- A. The teaming and failover adapters must be set appropriately.
- B. The Traffic Shaping configuration must be altered.
- C. The default values for MAC Address Changes and Forged Transmits must be altered.
- D. The Load Balancing Policy must be set appropriately.
- E. The VLAN ID must be set appropriately.

Answer: ([SHOW ANSWER](#))

NEW QUESTION: 103

Which three IP addresses may be pinged by the Test Management Network feature in the ESXi hosts DCUI? (Choose three.)

- A. NTP server
- B. Secondary DNS server
- C. DHCP server
- D. Default gateway
- E. Primary DNS server

Answer: (SHOW ANSWER)

Explanation/Reference:

Reference: <https://docs.vmware.com/en/VMware-vSphere/6.5/com.vmware.vsphere.install.doc/GUID-0CDC0898-34C2-4DF5-B7F8-49BEE14D0A85.html>

NEW QUESTION: 104

What is the minimum version of ESXi required to support VMFS6? (Choose the best answer.)

- A. ESXi 6.0 and later
- B. ESXi 5.0 and later
- C. ESXi 5.5 and later
- D. ESXi 6.5 and later

Answer: (SHOW ANSWER)

Explanation/Reference:

<https://docs.vmware.com/en/VMware-vSphere/6.5/com.vmware.vsphere.storage.doc/GUID-7552DAD4-1809-4687-B46E-ED9BB42CE277.html>

NEW QUESTION: 105

An organization has a number of virtual machines that would benefit from Fault Tolerance.

These include:

- A single vCPU Apache Server
- A dual vCPU vCenter Server
- A quad vCPU SQL Server
- An eight vCPU Hadoop Server

Which two virtual machines can be configured to use VMware Fault Tolerance? (Choose two.)

- A. Apache Server
- B. vCenter Server
- C. SQL Server
- D. Hadoop Server

Answer: (SHOW ANSWER)

NEW QUESTION: 106

By default, how many login attempts will an ESXi host allow before locking out the account?

- A. 7
- B. 8
- C. 10
- D. 5

Answer: (SHOW ANSWER)

Explanation/Reference:

Reference: <https://pubs.vmware.com/vsphere-60/index.jsp?topic=%2Fcom.vmware.vsphere.security.doc%2FGUID-DC96FFDB-F5F2-43EC-8C73-05ACDAE6BE43.html>

Valid 2V0-602 Dumps shared by ExamDiscuss.com for Helping Passing 2V0-602 Exam!
ExamDiscuss.com now offer the **newest 2V0-602 exam dumps**, the ExamDiscuss.com 2V0-602 exam **questions have been updated** and **answers have been corrected** get the **newest** ExamDiscuss.com 2V0-602 dumps with Test Engine here:
<https://www.examdisscuss.com/VMware/exam/2V0-602/premium/> (**385 Q&As Dumps, 35%OFF**
Special Discount Code: freecram)

NEW QUESTION: 107

A vSphere Administrator uses vMotion to migrate a virtual machine between two ESXi hosts and notices that they can no longer ping the VM.

What is the cause?

- A. The virtual machine has RDMS attached
- B. There's an MTU mismatch
- C. The destination host has an incorrect VLAN tag on the virtual machine port group for the VM
- D. The destination host has two port groups with the same VLAN tag

Answer: (SHOW ANSWER)

NEW QUESTION: 108

An attempt to enable vSphere Fault Tolerance for a powered-on virtual machine fails.

Which two scenarios would result in this failure? (Choose two.)

- A. The virtual machine has three vCPUs configured.
- B. The host on which the virtual machine is running has insufficient memory resources.
- C. The virtual machine has insufficient resources to accommodate full reservation plus the overhead memory.
- D. VMware High Availability is enabled on the cluster of which this host is a member.

Answer: (SHOW ANSWER)

Explanation/Reference:

Reference: <https://docs.vmware.com/en/VMware-vSphere/6.0/com.vmware.vsphere.avail.doc/GUID-83FE5A45-8260-436B-A603-B8CBD2A1A611.html>

NEW QUESTION: 109

Which three options are available when applying a Customization Specification to an existing virtual machine? (Choose three.)

- A. Modify a specification
- B. Select an existing specification
- C. Import a specification
- D. Create a specification from an existing specification
- E. Create a specification

Answer: ([SHOW ANSWER](#))

Explanation/Reference:

Reference: <https://docs.vmware.com/en/VMware->

[vSphere/6.5/com.vmware.vsphere.vm_admin.doc/GUID-EB5F090E-723C-4470-B640-50B35D1EC016.html](https://docs.vmware.com/en/VMware-vSphere/6.5/com.vmware.vsphere.vm_admin.doc/GUID-EB5F090E-723C-4470-B640-50B35D1EC016.html)

NEW QUESTION: 110

An application running in a virtual machine is experiencing performance issues. When utilizing performance monitoring utilities, it is noted that the CPU Utilization of the application is at 100%. Which two scenarios are probable causes of the CPU contention for the application? (Choose two.)

- A. The application is not virtualization aware.
- B. There is a storage I/O constraint.
- C. There is insufficient disk space assigned to the virtual machine.
- D. There is a network I/O constraint.

Answer: ([SHOW ANSWER](#))

NEW QUESTION: 111

A user wants to monitor a business-critical virtual machine to ensure that it doesn't run out of resources. What metric could be monitored in vRealize Operations to address this concern?

- A. Compliance badge
- B. Reclaimable Waste badge
- C. Density badge
- D. Time Remaining badge

Answer: ([SHOW ANSWER](#))

NEW QUESTION: 112

Which feature of vSphere 6.x enables organizations to move virtual machines across data centers?

- A. Long Distance vMotion
- B. Auto Deploy
- C. Content Library
- D. Replication

Answer: ([SHOW ANSWER](#))

NEW QUESTION: 113

Which actions take place when DRS Automation is set to Partially Automated?

- A. Initial placement: Recommended host(s) is displayed.

Migration: Recommendation is executed automatically.

B. Initial placement: Automatic.

Migration: Recommendation is displayed.

C. Initial placement: Recommended host(s) is displayed.

Migration: Recommendation is displayed.

D. Initial placement: Automatic.

Migration: Recommendation is executed automatically.

Answer: ([SHOW ANSWER](#))

Explanation/Reference:

Reference: [https://pubs.vmware.com/vsphere-51/index.jsp?topic=](https://pubs.vmware.com/vsphere-51/index.jsp?topic=%2Fcom.vmware.vsphere.resmgmt.doc)

[%2Fcom.vmware.vsphere.resmgmt.doc](https://pubs.vmware.com/vsphere-51/index.jsp?topic=%2Fcom.vmware.vsphere.resmgmt.doc)

[%2FGUID-E83A6B62-37F8-46D0-8D0A-D6A9181979F2.html](https://pubs.vmware.com/vsphere-51/index.jsp?topic=%2Fcom.vmware.vsphere.resmgmt.doc)

NEW QUESTION: 114

Why are some virtual machines orphaned after rebooting a High Availability (HA) enabled host?

A. The Orphaned virtual machines have HA restart disabled.

B. The host just came out of maintenance mode.

C. The host is attached to failed storage.

D. The Orphaned virtual machines moved recently and the change did not persist.

Answer: ([SHOW ANSWER](#))

NEW QUESTION: 115

Which two actions are prerequisites to adding ESXi 6.x hosts to a vSphere Distributed Switch? (Choose two.)

A. Verify that Network I/O control for Management Traffic is configured for the highest share value.

B. Verify that the Distributed Switch has been configured with a Network Profile.

C. Verify that there is at least one Distributed Port Group on the Distributed Switch.

D. Verify that the Distributed Port Group have active uplinks configured in its teaming and failover policy.

Answer: ([SHOW ANSWER](#))

NEW QUESTION: 116

What condition would prevent an administrator from creating a new VMFS3 datastore on an ESXi 6.x host using the vSphere Web Client?

A. VMFS3 datastores are not compatible with virtual machines created on an ESXi 6.x host.

B. A VMFS3 datastore cannot be mounted on an ESXi 6.x host.

C. A VMFS3 datastore cannot be created on an ESXi 6.x host.

D. The VMFS3 kernel module is not loaded.

Answer: ([SHOW ANSWER](#))

NEW QUESTION: 117

When attempting to access a virtual machine, an administrator is unable to login using the vSphere credentials.

What two options are probable causes of the authentication failure? (Choose two.)

- A. The vSphere credentials are granted read-only permissions.
- B. The vSphere credentials are not a member of the local administrator group.
- C. The vSphere credentials are granted no-access permissions.
- D. The vSphere credentials have not been granted permissions.

Answer: ([SHOW ANSWER](#))

NEW QUESTION: 118

A vSphere Administrator is required to apply security hardening policies following the VMware vSphere Hardening Guide recommendations.

Which tool enables native compliance reporting for these guidelines?

- A. VMware AirWatch
- B. VMware vRealize Operations Manager
- C. VMware vCenter Server
- D. VMware vSphere Update Manager

Answer: ([SHOW ANSWER](#))

Explanation/Reference:

Reference: <https://docs.vmware.com/en/vRealize-Operations-Manager/6.5/com.vmware.vcom.core.doc/GUID-1DE5F654-A59E-4DA0-A294-AE7676AEE267.html>

NEW QUESTION: 119

Which are two requirements for vMotion without shared storage? (Choose two.)

- A. The source host must have access to the destination storage.
- B. The hosts must be licensed with vSphere Enterprise Plus.
- C. The destination host must have access to any RDM LUNs.
- D. The source and destination hosts must have identical CPUs.
- E. Hosts must be running vSphere 5.1 or later.

Answer: ([SHOW ANSWER](#))

Explanation/Reference:

Reference: <https://pubs.vmware.com/vsphere-51/index.jsp?topic=%2Fcom.vmware.vsphere.vcenterhost.doc%2FGUID-9F1D4A3B-3392-46A3-8720-73CBFA000A3C.html>

NEW QUESTION: 120

Which two NFS Protocol versions does vSphere 6 support? (Choose two.)

- A. Version 3.1
- B. Version 3
- C. Version 4.1
- D. Version 4

Answer: ([SHOW ANSWER](#))

NEW QUESTION: 121

After enabling iSCSI port binding on ESXi hosts, a vSphere Administrator can no longer reach an iSCSI Array Target from the configured software iSCSI initiators. Which can be the root cause for the failure?

- A. LACP other link aggregation was used on the ESXi hosts uplinks to connect to the physical switches.
- B. All VMkernel ports used for iSCSI connectivity reside in the same vSwitch.
- C. All VMkernel ports used for iSCSI connectivity reside in the same broadcast domain and IP subnet.
- D. Array Target iSCSI ports reside in the same broadcast domain and IP subnet as the VMkernel ports.

Answer: ([SHOW ANSWER](#))

Valid 2V0-602 Dumps shared by ExamDiscuss.com for Helping Passing 2V0-602 Exam!

ExamDiscuss.com now offer the **newest 2V0-602 exam dumps**, the ExamDiscuss.com 2V0-602 exam **questions have been updated** and **answers have been corrected** get the **newest** ExamDiscuss.com 2V0-602 dumps with Test Engine here:

<https://www.examd Discuss.com/VMware/exam/2V0-602/premium/> (**385 Q&As Dumps, 35%OFF**

Special Discount Code: freecram)

NEW QUESTION: 122

What is the optimal configuration when building a virtual machine for a single-threaded Windows application?

- A. Tune Single-threaded applications at the hypervisor level.
- B. Deploy single-threaded applications on symmetric multi-processor virtual machines.
- C. Tune single-threaded applications to take advantage of symmetric multi-processor resources.
- D. Deploy single-threaded applications on uniprocessor virtual machines.

Answer: ([SHOW ANSWER](#))

NEW QUESTION: 123

You have just installed an ESXi 6.x Host. As part of your company security regulations, a security banner must be presented on the console of the host.

How can this action be accomplished?

- A. Configure the Advanced Settings > Annotations screen of the ESXi host.
- B. This is configured from the Direct Console User Interface configuration menu.
- C. It is not possible to configure a security banner for the ESXi host.
- D. From vCenter Server, this setting is configured globally in the vCenter Server configuration.

Answer: ([SHOW ANSWER](#))

Explanation/Reference:

Reference: <https://kb.vmware.com/s/article/2046347>

NEW QUESTION: 124

vSphere Update Manager allows which two virtual machine attributes to be upgraded? (Choose two.)

- A. Virtual machine firewall policies for NSX.
- B. Virtual machine Hardware Version.
- C. Software Packages in the virtual machine.
- D. VMware Tools Upgrade.

Answer: ([SHOW ANSWER](#))

NEW QUESTION: 125

A virtual machine is experiencing performance issues.

The following performance metrics are observed:

▪ CPU usage value for the virtual machine is above 90%

▪ CPU ready value for the virtual machine is above 20%

Which two activities will likely resolve the performance issues? (Choose two.)

- A. Increase the CPU limit on the virtual machine.
- B. Set a CPU reservation for the virtual machine.
- C. Increase CPU shares equally for all virtual machines on the host.
- D. Decrease CPU shares equally for all virtual machines on the host.

Answer: ([SHOW ANSWER](#))

NEW QUESTION: 126

An administrator is attempting to restore a number of files in a directory within the Operating System of a virtual machine.

How can the administrator restore the files from a previous backup?

- A. Connect to the File Level Restore tool from a web browser in the virtual machine.
- B. Use the File Level Restore option from the selected backup of the virtual machine in the vSphere Client.
- C. Connect to the File Level Restore tool from the VMware Data Protection appliance.
- D. Use the File Level Restore option from the selected backup of the virtual machine in the vSphere Web Client.

Answer: ([SHOW ANSWER](#))

NEW QUESTION: 127

An administrator is troubleshooting basic network connectivity issues.

Which two scenarios are potential issues that this administrator might face? (Choose two.)

- A. Traffic shaping is configured incorrectly.
- B. The portgroup is not configured to use correct VLAN.
- C. The vSwitch is not attached to the correct physical network.
- D. Jumbo frames is configured incorrectly.

Answer: ([SHOW ANSWER](#))

NEW QUESTION: 128

An administrator deploys vCenter Server using the embedded Platform Services Controller. After testing the deployment for a couple of months, it is determined that the environment would be better served with an external Platform Services Controller.

What should the administrator do to meet this new requirement?

- A. Deploy a fresh instance of vCenter Server with an external Platform Services Controller.
- B. Perform a fresh install of an external Platform Services Controller.
- C. Upgrade the embedded Platform Services Controller to an external Platform Services Controller.
- D. Migrate the embedded Platform Services Controller to an external Platform Services Controller.

Answer: ([SHOW ANSWER](#))

NEW QUESTION: 129

Which three connection types are available when configuring a vSwitch in the vSphere Web Client? (Choose three.)

- A. Virtual Machine Port Group for a Standard Switch
- B. vMotion Network Adapter
- C. VMkernel Network Adapter
- D. vSAN Network Adapter
- E. Physical Network Adapter

Answer: ([SHOW ANSWER](#))

NEW QUESTION: 130

An administrator is attempting to enable Storage I/O Control on a datastore, but it is failing. What is the likely reason for this failure?

- A. The host is connected to a datastore is running on ESX 4.0.
- B. The host is connected to a Fibre Channel storage array.
- C. The datastore has multiple extents.
- D. The datastore is managed by a single vCenter Server.

Answer: ([SHOW ANSWER](#))

Explanation/Reference:

Reference: <https://kb.vmware.com/s/article/1022091>

NEW QUESTION: 131

When a vSphere Administrator powers on a VM with the following configuration, what will be the resulting swap file size?

▼ *Memory	
RAM (*)	4 GB
Reservation (*)	2 GB Reserve all guest memory (All locked)
Limit (*)	3 GB
Shares	Normal 40960

- A. 1 GB
- B. 3 GB
- C. 2 GB
- D. 4 GB

Answer: ([SHOW ANSWER](#))

NEW QUESTION: 132

Refer to the Exhibit. An administrator is migrating a powered-on virtual machine, as shown in the exhibit.

1 Select the migration type

Select a compute resource
Select network
Select vMotion priority
Ready to complete

Select the migration type
Change the virtual machines' compute resource, storage, or both. You can also migrate the virtual machines to a virtual data center.

- Change VM compute resource only
Migrate the virtual machines to another host or cluster
- Change storage only
Migrate the virtual machines' storage to a compatible datastore or datastore cluster
- Change both compute resource and storage
Migrate the virtual machines to a specific host or cluster and their storage to a specific datastore or datastore cluster
- Select compute resource first
- Select storage first

Back Next Finish Cancel

Which option should be selected to perform a Storage vMotion of the VM?

- A. Change VM compute resource only
- B. Change storage only
- C. Change both compute resource and storage, changing the storage resource first.
- D. Change both compute resource and storage, changing the compute resource first.

Answer: ([SHOW ANSWER](#))

NEW QUESTION: 133

An administrator is planning a vSphere infrastructure with the following specific networking requirements:

- The ability to shape inbound (RX) traffic

- Support for Private VLANs (PVLANS)
- Support for LLDP (Link Layer Discovery Protocol)

What is the minimum vSphere Edition that will support these requirements?

- A. vSphere Essentials Plus
- B. vSphere Standard
- C. vSphere Enterprise
- D. vSphere Enterprise Plus

Answer: (SHOW ANSWER)

Explanation/Reference:

Explanation:

<http://www.vmware.com/products/vsphere/compare>

<http://www.vmware.com/products/vsphere/features/distributed-switch.html>

NEW QUESTION: 134

An administrator is tasked with performing a vMotion migration of a virtual machine.

The virtual machine is configured as follows:

vSphere Flash Read Cache (vFRC) enabled

Is part of a Distributed Resource Cluster (DRS) Cluster

Which two statements are true? (Choose two.)

- A. DRS treats powered-on virtual machines with Flash Read Cache as having a preferred affinity to their current host and moves them only for mandatory reasons.
- B. DRS treats powered-on virtual machines with Flash Read Cache as having a required affinity to their current host and does not move them.
- C. Each ESXi host in the cluster supports multiple virtual flash resources.
- D. Each ESXi host in the cluster supports one virtual flash resource.

Answer: (SHOW ANSWER)

NEW QUESTION: 135

Which is a valid requirement for deploying the vCenter Server Appliance 6.x to a DRS cluster?

- A. One ESXi host in the cluster must not be in maintenance mode or lockdown mode.
- B. At least one host in the cluster must not be in maintenance mode or lockdown mode.
- C. One ESXi host in the cluster must not be in lockdown mode.
- D. All ESXi hosts in the cluster must not be in maintenance mode.

Answer: (SHOW ANSWER)

Explanation/Reference:

Reference: <https://docs.vmware.com/en/VMware-vSphere/6.0/com.vmware.vsphere.install.doc/GUID-E278E0F2-8983-4246-9903-50C4022F1273.html>

NEW QUESTION: 136

What are the two minimum configurations of a disk group in a vSAN host? (Choose two.)

- A. 1 SSD drive for the caching tier and 1 or more HDDs for the capacity tier
- B. 1 SSD drive for the caching tier and 1 or more SSDs for the capacity tier
- C. 2 or more SSD drives for the caching tier and 2 or more SSDs for the capacity tier
- D. 2 or more SSD drives for the caching tier and 2 or more HDDs for the capacity tier

Answer: (SHOW ANSWER)

Explanation/Reference:

<https://docs.vmware.com/en/VMware-vSphere/6.5/com.vmware.vsphere.virtualsan.doc/GUID-4B738A10-4506-4D70-8339-28D8C8331A15.html>

Valid 2V0-602 Dumps shared by ExamDiscuss.com for Helping Passing 2V0-602 Exam!
ExamDiscuss.com now offer the **newest 2V0-602 exam dumps**, the ExamDiscuss.com 2V0-602 exam **questions have been updated** and **answers have been corrected** get the **newest** ExamDiscuss.com 2V0-602 dumps with Test Engine here:

<https://www.examdisscuss.com/VMware/exam/2V0-602/premium/> (**385 Q&As Dumps, 35%OFF**

Special Discount Code: freecram)

NEW QUESTION: 137

A new vApp was built and tested in the corporate headquarters datacenter running vSphere 6.x. What condition would explain why the virtual machine is failing to boot in an offsite datacenter running on vSphere 5.5?

- A. A DRS 5.5 cluster cannot run virtual machines configured with vSphere 6.x.
- B. The VMDK file is locked.
- C. The virtual machine was built with the default hardware version.
- D. The VMFS 5 datastore is not compatible with virtual machines configured with vSphere 6.x.

Answer: (SHOW ANSWER)

NEW QUESTION: 138

Which three steps must be taken to use vSphere Update Manager 6.x to upgrade an ESXi 5.5 host to vSphere 6.x? (Choose three.)

- A. Scan the vCenter Content Library for the ESXi Image.
- B. Create a baseline and attach it to the ESXi Host.
- C. Configure the vSphere Update Manager Download Service.
- D. Download an ESXi Image.
- E. Remediate the ESXi Host.

Answer: (SHOW ANSWER)

NEW QUESTION: 139

An organization has configured Distributed Power Management (DPM) on a vSphere 6 cluster.

The organization wants to be alerted when an ESXi host has been powered down by DPM.
Which two options represent the type and name of the alarm that would accomplish this? (Choose two.)

- A. DrsEnteringStandbyModeEvent
- B. DrsEnteredStandbyModeEvent
- C. Event-based
- D. Condition-based

Answer: (SHOW ANSWER)

Explanation/Reference:

Reference: <https://docs.vmware.com/en/VMware-vSphere/6.5/com.vmware.vsphere.resmgmt.doc/GUID-DE5EF6EA-97F0-43E9-8BD5-2A45A64445BC.html>

NEW QUESTION: 140

Which two badges are major badges in vRealize Operations? (Choose two.)

- A. Risk
- B. Efficiency
- C. Workload
- D. Faults

Answer: A,B (LEAVE A REPLY)

NEW QUESTION: 141

An ESXi host has limited network connectivity.

What three troubleshooting steps can a vSphere Administrator take? (Choose three.)

- A. Verify that all NICs are configured to support the promiscuous mode.
- B. Verify that portfast (or equivalent) is enabled on all the physical switch ports that the ESXi host is connected to.
- C. Verify that the speed and duplex of the network links are consistent.
- D. Use ESXCLI to verify that the virtual switch NIC teaming is properly set.
- E. Verify that all NICs connected to the same ToR switch are part of the same LAG.

Answer: (SHOW ANSWER)

Explanation/Reference:

Reference: <https://kb.vmware.com/s/article/1004109>

NEW QUESTION: 142

An administrator is migrating a virtual machine from a Test cluster to a Production cluster.

The two environments do not have any shared storage.

What is the easiest way to accomplish this task?

- A. Perform a Storage vMotion.
- B. Perform a regular vMotion.
- C. Perform a Virtual to Virtual migration.
- D. Perform a backup and restore using VMware Data Protection.

Answer: ([SHOW ANSWER](#))

NEW QUESTION: 143

You are creating a virtual machine in the Web Client using the New Virtual Machine wizard.

Which two steps are required? (Choose two.)

- A. Select a cluster for the compute resource.
- B. Select a valid name.
- C. Select the virtual machine compatibility.
- D. Select a network adapter.

Answer: ([SHOW ANSWER](#))

NEW QUESTION: 144

What are two valid states for Compliance Status in VM Storage Policy? (Choose two.)

- A. Compliant
- B. Orphaned
- C. Invalid
- D. Out of Date

Answer: ([SHOW ANSWER](#))

Explanation/Reference:

Reference: <https://docs.vmware.com/en/VMware-vSphere/6.5/com.vmware.vsphere.storage.doc/GUID-133B65D0-CE10-45E7-BFA5-74CAD19E0DFD.html>

NEW QUESTION: 145

A vApp named Sales has a Memory Limit of 32 GB and a CPU Limit of 12,000 MHz.

There are three virtual machines within the vApp:

Sales-DB -- Has a memory reservation of 20 GB.

Sales-DC -- Has a memory reservation of 8 GB.

Sales-Web -- Has a memory reservation of 8 GB.

Which statement is correct?

- A. All three virtual machines can power on without memory contention.
- B. Only one of the virtual machines can power on.
- C. Only two of the three virtual machines can power on.
- D. All three virtual machines can power on, but will have memory contention.

Answer: ([SHOW ANSWER](#))

NEW QUESTION: 146

A VMware vSphere 6.x Administrator has been tasked with enabling the Integrated Load Balancer for the new vRealize Log Insight cluster.

What three options are required before the Integrated Load Balancer can be used? (Choose three.)

- A. The time on the vRealize Log Insight virtual appliance must be synchronized with an NTP server.
- B. All vRealize Log Insight nodes are configured as the same size.

- C. The vRealize Log Insight master and work nodes must have CA signed certificates.
- D. Verify that all vRealize Log Insight nodes and the specified Integrated Load Balancer IP address are on the same network.
- E. The vRealize Log Insight master and worker nodes must have the same certificates.

Answer: ([SHOW ANSWER](#))

Explanation/Reference:

Reference: <http://pubs.vmware.com/log-insight-33/index.jsp?topic=%2Fcom.vmware.log-insight.administration.doc%2FGUID-72CB469A-F276-438D-BC93-77853E2CC0B9.html>

NEW QUESTION: 147

From which two locations in the inventory hierarchy can you deploy a virtual machine using a template? (Choose two.)

- A. From a Datastore.
- B. From an existing virtual machine.
- C. Directly from the template.
- D. From a compute resource.

Answer: ([SHOW ANSWER](#))

NEW QUESTION: 148

When you add an ESXi 6.x host to a new Cluster, which vSphere object owns the CPU and Memory resources of the hosts?

- A. Cluster
- B. vCenter Server
- C. Datacenter
- D. Host

Answer: ([SHOW ANSWER](#))

NEW QUESTION: 149

What happens to the status of users already logged into ESXi Shell when a vSphere administrator enables lockdown mode?

- A. Users remain logged in and can run commands, including disabling lockdown mode.
- B. Users are logged out after a timeout specified by the vSphere administrator.
- C. Users remain logged in and can run commands, except to disable lockdown mode.
- D. Users are immediately logged out of ESXi Shell.

Answer: ([SHOW ANSWER](#))

NEW QUESTION: 150

What is a benefit of using Enhanced vMotion Compatibility for an environment?

- A. EVC masks CPU features to allow compatibility between hosts that are dissimilar.
- B. EVC allows for cross platform vMotion to occur.
- C. EVC enables Long Distance vMotion.

D. EVC enables Storage vMotion functionality.

Answer: ([SHOW ANSWER](#))

NEW QUESTION: 151

A VMware vSphere 6.x Administrator is looking at the following output from esxtop on an ESXi host:



ADAPTR PATH	NPTH	CMDS/s	READS/s	WRITES/s	MBREADS/s	MBWRTN/s	DAVG/cmd	KAVG/cmd	GAVG/cmd	QAVG/cmd
vmhba0 -	0	0.00	0.00	0.00	0.00	0.00	0.00	0.00	0.00	0.00
vmhba1 -	0	0.00	0.00	0.00	0.00	0.00	0.00	0.00	0.00	0.00
vmhba2 -	1	0.19	0.00	0.19	0.00	0.00	22.70	0.03	22.73	0.00
vmhba3 -	0	0.00	0.00	0.00	0.00	0.00	0.00	0.00	0.00	0.00
vmhba32 -	1	0.00	0.00	0.00	0.00	0.00	0.00	0.00	0.00	0.00
vmhba33 -	0	0.00	0.00	0.00	0.00	0.00	0.00	0.00	0.00	0.00
vmhba34 -	0	0.00	0.00	0.00	0.00	0.00	0.00	0.00	0.00	0.00
vmhba35 -	0	0.00	0.00	0.00	0.00	0.00	0.00	0.00	0.00	0.00
vmhba36 -	0	0.00	0.00	0.00	0.00	0.00	0.00	0.00	0.00	0.00
vmhba37 -	0	0.00	0.00	0.00	0.00	0.00	0.00	0.00	0.00	0.00
vmhba38 -	0	0.00	0.00	0.00	0.00	0.00	0.00	0.00	0.00	0.00
vmhba39 -	0	0.00	0.00	0.00	0.00	0.00	0.00	0.00	0.00	0.00
vmhba4 -	0	0.00	0.00	0.00	0.00	0.00	0.00	0.00	0.00	0.00
vmhba40 -	0	0.00	0.00	0.00	0.00	0.00	0.00	0.00	0.00	0.00
vmhba41 -	0	0.00	0.00	0.00	0.00	0.00	0.00	0.00	0.00	0.00

What does DAVG/cmd represent?

- A. Average device latency per command in milliseconds
- B. Average ESXi VMkernel latency per command in milliseconds
- C. Average queue latency per command in milliseconds
- D. Average guest operating system latency per command in milliseconds.

Answer: ([SHOW ANSWER](#))

Explanation/Reference:

Reference: <http://www.yellow-bricks.com/esxtop/>

Valid 2V0-602 Dumps shared by ExamDiscuss.com for Helping Passing 2V0-602 Exam!
ExamDiscuss.com now offer the **newest 2V0-602 exam dumps**, the ExamDiscuss.com 2V0-602 exam **questions have been updated** and **answers have been corrected** get the **newest** ExamDiscuss.com 2V0-602 dumps with Test Engine here:

<https://www.examdisscuss.com/VMware/exam/2V0-602/premium/> (385 Q&As Dumps, **35%OFF**)

Special Discount Code: freecram)

NEW QUESTION: 152

An administrator attempts to migrate a suspended virtual machine to a newly deployed vSphere 6.x cluster. The compatibility check fails.

What condition could cause this behavior?

- A. The new vSphere 6.x cluster is running Intel CPUs instead of AMD CPUs.
- B. A suspended virtual machine cannot be migrated.
- C. The hardware virtualization feature of the CPU is not enabled on the new hosts.
- D. A vSphere Distributed Switch is required to migrate a suspended virtual machine.

Answer: (SHOW ANSWER)

Explanation/Reference:

Reference: <https://kb.vmware.com/s/article/1005764>

NEW QUESTION: 153

When using vSAN, all the storage characteristics are specified by Storage Policies. Which parameter in vSAN Storage Policies can increase performance in a cache miss situation? (Choose the best answer.)

- A. Number of disk stripes per object
- B. Number of failures to tolerate
- C. Object space reservation (%)
- D. Force provisioning

Answer: (SHOW ANSWER)

Explanation/Reference:

Reference: <https://blogs.vmware.com/virtualblocks/2016/09/19/vsan-stripes/>

NEW QUESTION: 154

An administrator must determine an appropriate backup solution, given these conditions:

- 50 of the virtual machines are in a resource pool named Finance.
- 50 of the virtual machines are in a resource pool named QA.

Which solution allows an administrator the ability to backup 100 virtual machines?

- A. Use the VMware Consolidated Backup (vcb) tool on the ESXi Host to backup the virtual machines.
- B. Use the VMware Data Protection (VDP) Appliance on one of the ESXi Hosts to backup the virtual machines.
- C. Use the VMware Data Recovery (VDR) Appliance on the vCenter Server to backup the virtual machines.
- D. Use Snapshot Manager on the vCenter Server to backup the virtual machines.

Answer: (SHOW ANSWER)

NEW QUESTION: 155

A VMware vSphere 6.x Administrator is implementing a new eight-node cluster for business critical applications. Each server will be configured with two 10 GbE network adapters and will utilize iSCSI for storage on one subnet.

Which feature is required to implement this solution?

- A. Network I/O Control
- B. LACP
- C. Storage DRS
- D. VMkernel Port Binding

Answer: (SHOW ANSWER)

NEW QUESTION: 156

An administrator needs to verify that vMotion operations can be performed in a vSphere data center.

What round trip time (RTT) latency is the maximum value that will allow vMotion operations to succeed?

- A. 200ms RTT
- B. 100ms RTT
- C. 50ms RTT
- D. 150ms RTT

Answer: ([SHOW ANSWER](#))

NEW QUESTION: 157

As part of a multisite Single Sign-On (SSO) deployment what two steps are required to ensure that a change to one Single Sign-On instance is propagated to the other instances? (Choose two.)

- A. Select the first instance during the installation of subsequent instances
- B. Schedule a Replication Task on the primary instance
- C. During the installation of each instance choose Linked-Mode
- D. Enable Synchronize to Active Directory on each instance

Answer: ([SHOW ANSWER](#))

NEW QUESTION: 158

Which password meets the default password requirements in ESXi 6.x?

- A. xTaMEhb!
- B. Xqavntthi3
- C. Xqa_hin3
- D. xQA!3h

Answer: ([SHOW ANSWER](#))

NEW QUESTION: 159

Which two SMTP Notification Event Details are specific to alarms triggered by events? (Choose two.)

- A. Target
- B. Summary
- C. Old Status
- D. User Name

Answer: ([SHOW ANSWER](#))

NEW QUESTION: 160

What two IT infrastructure components are virtualized by vSphere Essentials? (Choose two.)

- A. Networks
- B. Applications
- C. Storage
- D. Management

Answer: ([SHOW ANSWER](#))

NEW QUESTION: 161

An administrator has an application that requires connection directly to PCI devices through a virtual machine.

What is a limitation of this configuration?

- A. Devices must be reserved for PCI passthrough on at least one host on which the virtual machine will run.
- B. Snapshots are not supported with DirectPath I/O passthrough devices.
- C. A maximum of 18 PCI vSphere DirectPath devices can be added to a virtual machine.
- D. Only one PCI controller can be presented to the virtual machine.

Answer: ([SHOW ANSWER](#))

Explanation/Reference:

Explanation: https://docs.vmware.com/en/VMware-vSphere/6.5/com.vmware.vsphere.vm_admin.doc/GUID-53F65726-A23B-4CF0-A7D5-48E584B88613.html

NEW QUESTION: 162

An administrator creates an ESXi cluster using vSphere Auto Deploy. The ESXi hosts are configured to get a management IP address from a DHCP server. The administrator needs to troubleshoot the management network on one of the hosts. Which DCUI option should the administrator use to renew the DHCP lease?

- A. Configure Management Network
- B. Restart Management Network
- C. Test Management Network
- D. Restore Network Settings

Answer: ([SHOW ANSWER](#))

NEW QUESTION: 163

An administrator has unsuccessfully attempted several times to install an Operating System inside a virtual machine. The administrator finds that the installation fails at random intervals.

Which two actions can be taken to resolve this issue? (Choose two.)

- A. Attempt the installation an additional time.
- B. Attempt to use a different installation media or installation method.
- C. Create a new virtual machine and attempt the installation with the existing media.
- D. Verify the md5sum and if invalid, download the installation files again.

Answer: ([SHOW ANSWER](#))

NEW QUESTION: 164

An administrator reports that the System Event log data is only available for 24 hours when reviewing the Hardware Status tab.

Which condition could be responsible for the loss of data?

- A. A Reset event log was executed.
- B. The statistical collection level was set to a value of 1.
- C. The boot disk of the host is corrupt.

D. Syslog has been configured at the vCenter Server level.

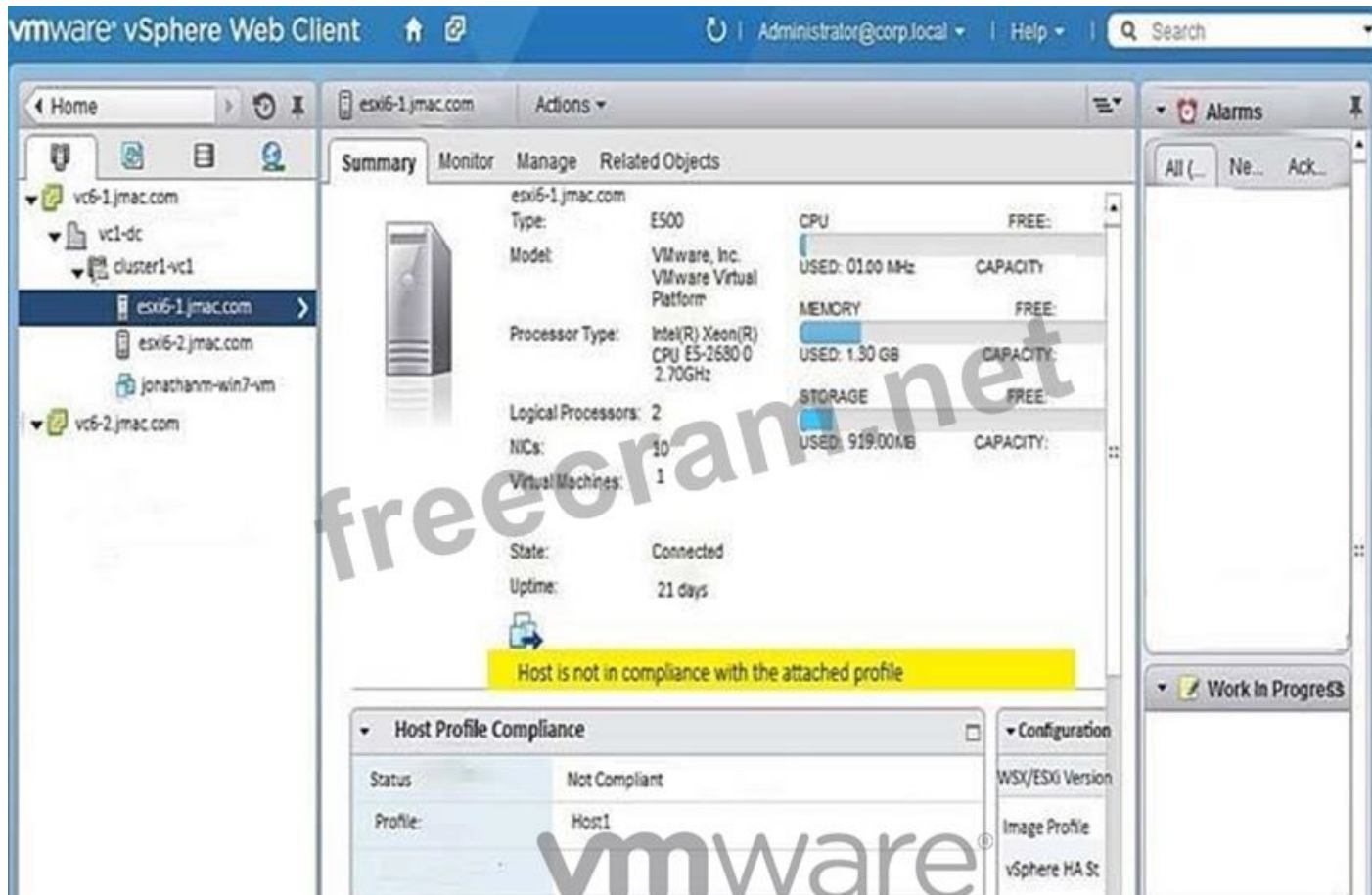
Answer: (SHOW ANSWER)

Explanation/Reference:

Reference: <https://kb.vmware.com/s/article/2011531>

NEW QUESTION: 165

Refer to the Exhibit. An administrator logs into the vSphere Web Client and sees the warning shown in the Exhibit.



During a change control window, the warning was addressed.

What should be done to verify that the host is no longer showing the warning?

- A. Restart the host to get rid of the warning.
- B. Run a Remediate host operation.
- C. Recheck the compliance of the host.
- D. Install VMware tools to clear the warning.

Answer: (SHOW ANSWER)

NEW QUESTION: 166

An administrator has just completed installing an ESXi 6.x host, but doesn't know what address has been configured.

Where is the ESXi host IP address configured?

- A. RVC console
- B. vSphere Client

- C. vSphere Web Client
- D. Direct Console User Interface

Answer: ([SHOW ANSWER](#))

Valid 2V0-602 Dumps shared by ExamDiscuss.com for Helping Passing 2V0-602 Exam!
ExamDiscuss.com now offer the **newest 2V0-602 exam dumps**, the ExamDiscuss.com 2V0-602 exam **questions have been updated** and **answers have been corrected** get the **newest** ExamDiscuss.com 2V0-602 dumps with Test Engine here:

<https://www.examd Discuss.com/VMware/exam/2V0-602/premium/> (**385 Q&As Dumps, 35%OFF**

Special Discount Code: freecram)

NEW QUESTION: 167

How many Link Aggregation Groups (LAGs) can be configured on a vSphere 6.x Distributed Switch?

- A. 128
- B. 64
- C. 256
- D. 96

Answer: ([SHOW ANSWER](#))

NEW QUESTION: 168

An administrator has just configured the IP address on an ESXi host from the Direct Console User Interface.

How can the configuration be validated as correct without any additional tools?

- A. Select the Test Management Network option from the DCUI.
- B. Use PowerCLI to connect to the host and initiate a network test.
- C. Add the host to vCenter Server and if it works, then all networking settings are ok.
- D. Connect to the host with the vSphere Client and click the Test Network option.

Answer: ([SHOW ANSWER](#))

NEW QUESTION: 169

An administrator creates a DRS cluster of eight ESXi 6.x hosts. There are 10 virtual machines balanced across the hosts. An attempt to place the first host into maintenance mode fails.

What are two reasons that the host failed to enter maintenance mode? (Choose two.)

- A. The DRS cluster Automation Level is set to Partially Automated mode.
- B. One of the virtual machines on the ESXi Host entering maintenance mode is configured with an individual Automation Level set to Partially Automated.
- C. One of the virtual machines on the ESXi Host entering maintenance mode is configured with a DRS Host affinity rule Must run on hosts in group.

D. One of the virtual machines on the ESXi Host entering maintenance mode is configured with a DRS Host affinity rule Should run on hosts in group.

Answer: ([SHOW ANSWER](#))

NEW QUESTION: 170

Which two statements are true about LACP support with the vSphere Distributed Switch? (Choose two.)

- A. LACP works with MAC hash load balancing.
- B. LACP does not work with port mirroring.
- C. LACP works with software iSCSI multipathing.
- D. LACP does not work with host profiles.

Answer: ([SHOW ANSWER](#))

Explanation/Reference:

Reference <https://docs.vmware.com/en/VMware-vSphere/6.5/com.vmware.vsphere.networking.doc/GUID-3FDE1E96-9217-4FE6-8B76-6E3A64766828.html>

NEW QUESTION: 171

ESXi 6.x can be installed upon which three supported hardware configurations? (Choose three.)

- A. Local disk connected through Serial ATA (SATA)
- B. Intel NX/XD disabled for the CPU in the system BIOS
- C. 1 GbE network adapter
- D. 2 GB of physical RAM
- E. Intel NX/XD enabled for the CPU in the system BIOS

Answer: ([SHOW ANSWER](#))

Explanation/Reference:

Reference: <https://docs.vmware.com/en/VMware-vSphere/6.0/com.vmware.vsphere.install.doc/GUID-DEB8086A-306B-4239-BF76-E354679202FC.html>

NEW QUESTION: 172

Which virtual switch load balancing method should be used when teaming network interfaces with EtherChannel?

- A. Route based on originating virtual port.
- B. Route based on IP hash.
- C. Route based on physical NIC load.
- D. Route based on source MAC hash.
- E. Use explicit failover order.

Answer: ([SHOW ANSWER](#))

Explanation/Reference:

Reference: <https://pubs.vmware.com/vsphere-60/index.jsp?topic=%2Fcom.vmware.vsphere.networking.doc%2FGUID-D34B1ADD-B8A7-43CD-AA7E-2832A0F7EE76.html>

NEW QUESTION: 173

Which two actions are required when enabling vFlash Read Cache for a virtual machine's virtual disk? (Choose two.)

- A. A value in the Virtual Flash Read Cache text box must be entered.
- B. The Device backing and the block size must be configured.
- C. The Enable virtual flash host swap cache check box must be selected.
- D. A Flash Resource Pool for Cache size reservation must be entered.

Answer: ([SHOW ANSWER](#))

NEW QUESTION: 174

An administrator creates an ESXi cluster using vSphere Auto Deploy. The ESXi hosts are configured to get a management IP address from a DHCP server. The administrator needs to troubleshoot the management network on one of the hosts. Which DCUI option should the administrator use to renew the DHCP lease?

- A. Restore Network Settings
- B. Restart Management Network
- C. Test Management Network
- D. Configure Management Network

Answer: B ([LEAVE A REPLY](#))

NEW QUESTION: 175

An administrator logs into the vSphere Web Client, but is unable to see any hosts and clusters. Which two options could fix the problem? (Choose two.)

- A. Log in to the vSphere Web Client as a user with permissions on the vCenter Server system.
- B. Verify that the vCenter Server system is registered with the same Platform Services Controller as the vSphere Web Client.
- C. Log in to the vCenter Server as a user within the Active Directory domain.
- D. Verify that the client web browser and vCenter Server are in the same broadcast domain.

Answer: ([SHOW ANSWER](#))

NEW QUESTION: 176

An administrator has just completed performing an interactive installation of ESXi 6.x and is booting the host.

How is the network initially configured?

- A. The network is automatically configured by DHCP.
- B. The network is configured by Automatic Private IP Addressing (APIPA).
- C. The network is configured with the address as specified in the installer.
- D. The network is configured based on the settings detected in DNS.

Answer: ([SHOW ANSWER](#))

NEW QUESTION: 177

An administrator attempts to install vCenter Single Sign-On Server. The installer returns an error message indicating that the installation failed. Prior to the installation, all setup prerequisites were met. The administrator has generated a vCenter Server Single Sign-On support bundle.

Which two files should the administrator analyze to determine the cause of the failure? (Choose two.)

- A. Server\utils\logs\imsTrace.log
- B. Server\utils\logs\install.txt
- C. %TEMP%\utils\logs\vminst.log
- D. %TEMP%\vminst.log

Answer: (SHOW ANSWER)

Explanation/Reference:

Explanation:

[http://kb.vmware.com/selfservice/microsites/search.do?](http://kb.vmware.com/selfservice/microsites/search.do?language=en_US&cmd=displayKC&externalId=2033880)

[language=en_US&cmd=displayKC&externalId=2033880](http://kb.vmware.com/selfservice/microsites/search.do?language=en_US&cmd=displayKC&externalId=2033880)

https://www.vmware.com/support/ws5/doc/intro_techsup_ws.html

NEW QUESTION: 178

What is the maximum supported number of vCPU per VM in VMware vSphere 6.5?

- A. 256
- B. 128
- C. 64
- D. 32

Answer: (SHOW ANSWER)

Explanation/Reference:

Reference: <https://docs.vmware.com/en/VMware-vSphere/6.5/com.vmware.vsphere.configmax.doc/GUID-456C4E8F-E8CC-44FD-B121-18DA64BDCC87.html>

NEW QUESTION: 179

An administrator is unable to create the first group in a new vRealize Operations environment.

What is the likely cause of the problem?

- A. There are no group types defined.
- B. The group is not defined in SSO.
- C. There are more than 32 group types defined.
- D. The description for the group is not provided.

Answer: A (LEAVE A REPLY)

Explanation/Reference:

Reference: <https://www.vmware.com/support/vrops/doc/vrops-601-release-notes.html>

NEW QUESTION: 180

After selecting an object in vRealize Operations, how can a user compare the badge values of related child objects?

Freecram.net

- A. Use the Relationship tab
- B. Use the Overview tab
- C. Use the Members tab
- D. Use the Scoreboard tab

Answer: ([SHOW ANSWER](#))

NEW QUESTION: 181

An administrator enables High Availability (HA) on a Virtual SAN cluster.
Which network is used for HA Network Heartbeat configuration?

- A. The Virtual SAN network.
- B. The Management network.
- C. The vMotion network.
- D. The Provisioning Traffic network.

Answer: ([SHOW ANSWER](#))

Valid 2V0-602 Dumps shared by ExamDiscuss.com for Helping Passing 2V0-602 Exam!

ExamDiscuss.com now offer the **newest 2V0-602 exam dumps**, the ExamDiscuss.com 2V0-602 exam **questions have been updated** and **answers have been corrected** get the **newest** ExamDiscuss.com 2V0-602 dumps with Test Engine here:

<https://www.examdumps.com/VMware/exam/2V0-602/premium/> (385 Q&As Dumps, **35%OFF**

Special Discount Code: freecram)

NEW QUESTION: 182

A mission-critical virtual machine built on vSphere 4.1 needs to be moved to an ESXi 6.x host.
Which virtual hardware version is needed to move the virtual machine without upgrading?

- A. 7
- B. 6
- C. 11
- D. 10

Answer: ([SHOW ANSWER](#))

NEW QUESTION: 183

Refer to the Exhibit. A storage administrator is not seeing full utilization of all bandwidth from an ESXi host.

The vSphere administrator observes the adapter details, as shown in the Exhibit.

Adapter Details

Runtime Name	Target	LUN	Status
vmhba2:C0:T3:L0	50:06:01:60:c7:20:6a:a4 50:06:0...	0	Active (I/O)
vmhba2:C0:T2:L0	50:06:01:60:c7:20:6a:a4 50:06:0...	0	Active (I/O)
vmhba2:C0:T1:L0	50:06:01:60:c7:20:6a:a4 50:06:0...	0	Disabled
vmhba2:C0:T0:L0	50:06:01:60:c7:20:6a:a4 50:06:0...	0	Active

What is the probable cause of this issue?

- A. The array is not setup to use the correct multipathing policy.
- B. Another path needs to be used to allow full utilization of the bandwidth.
- C. No traffic is being sent across it because a path failed.
- D. There are no virtual machines on the host.

Answer: ([SHOW ANSWER](#))

NEW QUESTION: 184

What two object types can be created inside of vApp? (Choose two.)

- A. vApp
- B. Resource Pool
- C. VM Folder
- D. Virtual Machine

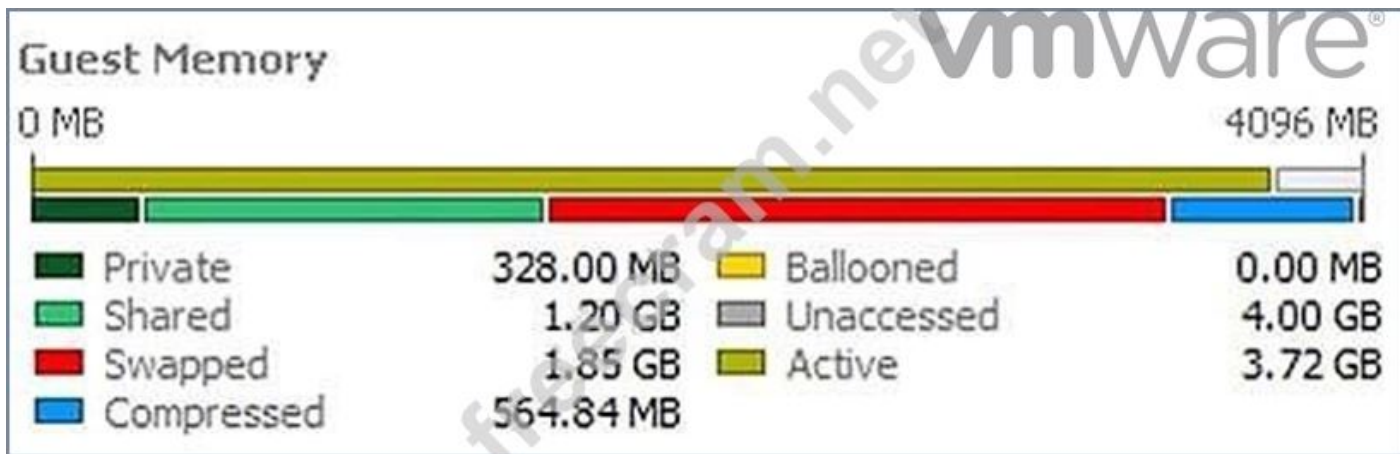
Answer: ([SHOW ANSWER](#))

Explanation/Reference:

Reference https://docs.vmware.com/en/VMware-vSphere/6.5/com.vmware.vsphere.vm_admin.doc/GUID-12FDA1A4-6214-463B-8D73-FE25454C642E.html

NEW QUESTION: 185

Refer to the Exhibit. A 4 GB Memory virtual machine is experiencing extended memory issues, as shown in the Exhibit.



What potential issues could be attributed to this memory pressure?

- A. A limit is imposed on the virtual memory of this virtual machine.
- B. The Balloon driver has been uninstalled.
- C. A limit has been imposed on the Virtual CPU of the virtual machine.
- D. Storage IO control has been enabled for the virtual machine causing the swapped memory.

Answer: ([SHOW ANSWER](#))

Explanation/Reference:

Explanation:

One of the issue might be that the limit is imposed on the virtual memory of this VM. Secondly, the balloon driver has been uninstalled. That's why it is experiencing memory issues.

NEW QUESTION: 186

What is true about a virtual machine with (orphaned) appended to the display name?

- A. The virtual machine has been cloned and removed from vCenter Server's inventory.
- B. The template that the virtual machine was created from no longer exists.
- C. The virtual machine creator no longer wants the virtual machine and has marked it for deletion.
- D. The virtual machine exists in the vCenter Server database, but the ESXi hosts no longer recognize it.

Answer: ([SHOW ANSWER](#))

Explanation/Reference:

Reference: [https://pubs.vmware.com/vsphere-50/index.jsp?topic=%](https://pubs.vmware.com/vsphere-50/index.jsp?topic=%2Fcom.vmware.vsphere.troubleshooting.doc_50%2FGUID-BFD8C9BC-30FB-4A92-AFEC-2FC9FF387920.html)

[2Fcom.vmware.vsphere.troubleshooting.doc_50%2FGUID-BFD8C9BC-30FB-4A92-AFEC-2FC9FF387920.html](https://pubs.vmware.com/vsphere-50/index.jsp?topic=%2Fcom.vmware.vsphere.troubleshooting.doc_50%2FGUID-BFD8C9BC-30FB-4A92-AFEC-2FC9FF387920.html)

NEW QUESTION: 187

The vSphere administrator attempts to connect to an ESXi host via an SSH client and receives the following security alert:



The vSphere administrator needs to determine whether the RSA key fingerprint shown in the security alert is the fingerprint of the intended ESXi host.

Which tool should the vSphere administrator use?

- A. vSphere Management Assistant
- B. vSphere Client
- C. Direct Console User Interface
- D. vSphere Web Client

Answer: ([SHOW ANSWER](#))

NEW QUESTION: 188

Which vSphere 6.x feature will allow an organization to utilize native snapshots?

- A. VMFS3
- B. Virtual SAN
- C. VMFS5
- D. Virtual Volumes

Answer: ([SHOW ANSWER](#))

NEW QUESTION: 189

Which virtual SCSI controller would be recommended when deploying a Windows Server 2012 R2 VM that will host a database server which is expected to generate high I/O?

- A. LSI Logic
- B. PVSCSI
- C. LSI Logic SAS
- D. BusLogic

Answer: ([SHOW ANSWER](#))

Explanation/Reference:

Reference: <http://www.vmware.com/content/dam/digitalmarketing/vmware/en/pdf/solutions/sql-server-on-vmware-best-practices-guide.pdf>

NEW QUESTION: 190

An ESXi 6.x host consists of 24 logical cores. Hyperthreading is enabled on the host. What is the maximum number of vCPUs that can be assigned to a virtual machine on this host?

- A. 24
- B. 48
- C. 64
- D. 128

Answer: ([SHOW ANSWER](#))

Explanation/Reference:

Reference: <http://wahlnetwork.com/2013/09/30/hyper-threading-gotcha-virtual-machine-vcpusizing/>

NEW QUESTION: 191

In order for a company to meet regulatory requirements, all ESXi 6.x Hosts must be configured to direct logs to a syslog server.

What are two ways ESXi hosts can be configured for this action? (Choose two)

- A. Use the esxcli system syslog command.
- B. Syslog logging is not available for ESXi Hosts.
- C. From the Syslog collector user interface of the Web Client.
- D. Edit them in the ESXi host Advanced System Settings.

Answer: ([SHOW ANSWER](#))

NEW QUESTION: 192

During an upgrade, the ESXi 6.x installer finds an existing version of ESXi and a VMFS3 volume. No virtual machines exist on the host or VMFS3 volume. The requirement is to upgrade to VMFS5. Which option should be chosen to meet this requirement?

- A. Upgrade ESXi and preserve the VMFS datastore
- B. Install ESXi and preserve the VMFS datastore
- C. Install ESXi and overwrite the VMFS datastore
- D. Upgrade ESXi and overwrite the VMFS datastore

Answer: ([SHOW ANSWER](#))

NEW QUESTION: 193

An administrator enables vSphere High Availability (HA) on an existing cluster with a large number of hosts and virtual machines.

The administrator notices that the setup of vSphere HA on some of the hosts is failing.

What step, if taken, might resolve this issue?

- A. Set the value of the das.useDefaultIsolationAddress setting to False.
- B. Increase the value of the config.vpxd.das.electionWaitTimeSec setting.
- C. Increase the value of the das.iostatsinterval setting.
- D. Set the value of vpxd.das.aamMemoryLimit to 256.

Answer: (SHOW ANSWER)

NEW QUESTION: 194

Refer to the Exhibit. An administrator is configuring an ESXi 6.x host to use multiple NICs to resolve a management network redundancy error. After configuring a second NIC, the server is not able to communicate when the primary connection is taken down.

The administrator analyzes the Exhibit shown here.

Device	Actual Speed	Configured Speed	Switch	MAC Address	Observed IP ranges	Wake on LAN
Intel Corporation 82545EM Gigabit Ethernet Controller (Copper)						
vmnic0	1000 Mb	Auto negotiate	vSwitch0	00:50:56:03:0a:51	10.0.0.8-10.0.0.11	No
vmnic1	1000 Mb	Auto negotiate	vSwitch0	00:50:56:03:3b:01	10.0.0.8-10.0.0.11	No
vmnic2	Down	Auto negotiate	vSwitch1	00:50:56:03:44:e8	10.0.0.8-10.0.0.11	No
vmnic3	1000 Mb	Auto negotiate	vSwitch1	00:50:56:03:0a:0f	10.0.0.8-10.0.0.11	No
vmnic4	1000 Mb	Auto negotiate	—	00:50:56:03:17:a3	10.0.0.8-10.0.0.11	No

Physical network adapter: vmnic0

Adapter: Intel Corporation 82545EM Gigabit Ethernet Controller (Copper)
Name: vmnic0
Location: PCI 0000:02:00:0
Driver: e1000

Based on the exhibit, what is the likely cause of the issue?

- A. vmnic2 is not connected to a physical switch.
- B. There is a MAC address conflict on the network.
- C. E1000 is the incorrect NIC Driver for this card.
- D. vmnic4 is not attached to a vSwitch.

Answer: (SHOW ANSWER)

NEW QUESTION: 195

Which three are requirements when using vMotion to move a virtual machine across vCenter Server systems? (Choose three.)

- A. Both vCenter Servers must be using Enhanced Linked Mode.
- B. Both vCenter Servers must be in the same Single Sign-On Domain.
- C. Time must be synchronized.
- D. Duplicate VM MAC addresses must be configured.
- E. Both vCenter Servers must have High Availability enabled on source and destination clusters.

Answer: (SHOW ANSWER)

Explanation/Reference:

Reference: <https://kb.vmware.com/s/article/2106952>

NEW QUESTION: 196

What are two valid methods to deploy an OVF template which consists of two or more VMs? (Choose two.)

- A. deploy on a vSphere HA enabled cluster
- B. deploy on the standalone host connected to vCenter Server
- C. deploy on the VMware vSphere Hypervisor
- D. deploy on a vSphere DRS enabled cluster

Answer: ([SHOW ANSWER](#))

Valid 2V0-602 Dumps shared by ExamDiscuss.com for Helping Passing 2V0-602 Exam!
ExamDiscuss.com now offer the **newest 2V0-602 exam dumps**, the ExamDiscuss.com 2V0-602 exam **questions have been updated** and **answers have been corrected** get the **newest** ExamDiscuss.com 2V0-602 dumps with Test Engine here:

<https://www.examdumps.com/VMware/exam/2V0-602/premium/> (**385 Q&As Dumps, 35%OFF**

Special Discount Code: freecram)

NEW QUESTION: 197

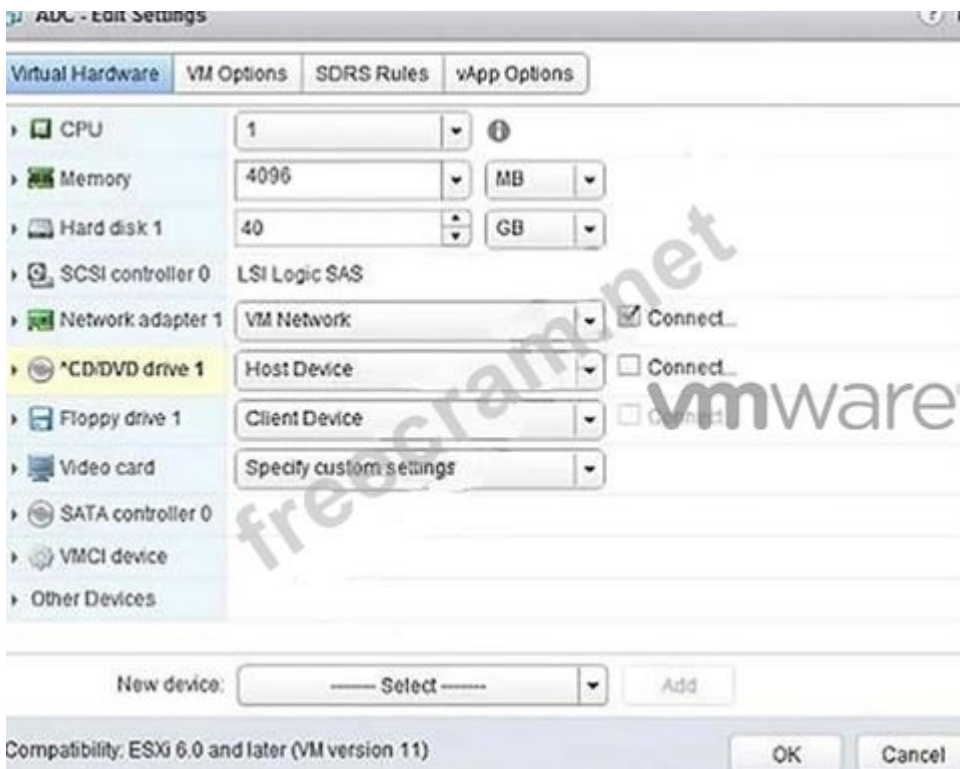
Which two statements about virtual switches in vSphere 6.x virtual networking are true? (Choose two.)

- A. Creates isolated networks for testing and development.
- B. Performs load balancing.
- C. Attaches virtual machines to the physical network.
- D. Monitors metadata about communications that occur in a network.

Answer: ([SHOW ANSWER](#))

NEW QUESTION: 198

Refer to the Exhibit. An administrator is installing Windows into a virtual machine. The DVD has been mounted on the Host and configured for the virtual machine as shown in the Exhibit.



Based on the exhibit, when the virtual machine is booted, why would it attempt to search for a PXE server?

- A. The OS minimum requirements have not been met.
- B. The ISO is in the incorrect storage location.
- C. The CD/DVD device is not set to Client Device.
- D. The CD/DVD device is not connected.

Answer: ([SHOW ANSWER](#))

NEW QUESTION: 199

One of your virtual machines (VM) has performance issues and sometimes in unresponsive. Which VM file must be checked in order to find the root cause?

- A. ds.log
- B. vmware.log
- C. vminst.log
- D. vpxd.log

Answer: ([SHOW ANSWER](#))

NEW QUESTION: 200

Which statement is true regarding the licensing of vCenter Server?

- A. Virtual machines can still be powered on if the vCenter Server license expires.
- B. Licensing for a single vCenter Server installation is determined by the number of managed virtual machines.
- C. The license for vCenter Server must be provided at the time of installation.
- D. Changing the license assigned to vCenter Server requires a restart of the vCenter Server service.

Answer: ([SHOW ANSWER](#))

NEW QUESTION: 201

How are ports scaled on vSphere Standard Switches (vSS)?

- A. Ports on a vSS can only be dynamically scaled down.
- B. Ports on a vSS can only be statically scaled up or down.
- C. Ports on a vSS can be dynamically scaled up and down.
- D. Ports on a vSS can only be dynamically scaled up.

Answer: ([SHOW ANSWER](#))

NEW QUESTION: 202

In the vSphere Web Client, what are the records of user actions or system actions that occur on objects in vCenter Server or on a host? (Choose the best answer.)

- A. Events
- B. Alarm Actions
- C. System Logs
- D. Alarms

Answer: ([SHOW ANSWER](#))

Explanation/Reference:

Reference: [https://pubs.vmware.com/vsphere-51/index.jsp?topic=%](https://pubs.vmware.com/vsphere-51/index.jsp?topic=%2Fcom.vmware.vsphere.monitoring.doc%2FGUID-9272E3B2-6A7F-427B-994C-B15FF8CADC25.html)

[2Fcom.vmware.vsphere.monitoring.doc%2FGUID-9272E3B2-6A7F-427B-994C-B15FF8CADC25.html](https://pubs.vmware.com/vsphere-51/index.jsp?topic=%2Fcom.vmware.vsphere.monitoring.doc%2FGUID-9272E3B2-6A7F-427B-994C-B15FF8CADC25.html)

NEW QUESTION: 203

Which three factors should an Administrator take into account when determining the required VDP appliance size and number of appliances? (Choose three.)

- A. retention periods (daily, weekly, monthly, yearly)
- B. VMs guest OS family and version
- C. typical change rate
- D. Number and type (database, file system) of VMs

Answer: ([SHOW ANSWER](#))

Explanation/Reference:

Reference: <https://pubs.vmware.com/vsphere-60/topic/com.vmware.ICbase/PDF/vmware-data-protection-administration-guide-60.pdf>

NEW QUESTION: 204

Which three options are available for remediation with Proactive HA? (Choose three.)

- A. Quarantine mode for moderate and Power off for severe failure.
- B. Quarantine mode for all failures.
- C. Power off for all failures.
- D. Quarantine mode for moderate and Maintenance mode for severe failure.
- E. Maintenance mode for all failures.

Answer: ([SHOW ANSWER](#))

Explanation/Reference:

Reference: <https://docs.vmware.com/en/VMware-vSphere/6.5/com.vmware.vsphere.avail.doc/GUID-3E3B18CC-8574-46FA-9170-CF549B8E55B8.html>

NEW QUESTION: 205

After installation of a host in your test environment, you need to move it to production.

The only major change that needs to be made is that the hostname of the server needs to change.

What are two ways that an administrator can change the host name without editing configuration files on the host directly? (Choose two.)

- A. Login to the Direct Console User Interface and change it from here.
- B. Edit the Default TCP/IP Configuration from the vSphere Web Client.
- C. Use the Ruby vSphere Client to send a script to the ESXi host that updates the hostname.
- D. Update the information in DNS and the ESXi host will automatically update with these changes.

Answer: A,B (LEAVE A REPLY)

NEW QUESTION: 206

A vSphere Administrator wants to migrate a virtual machine from a host with an AMD Opteron CPU to an intel Xeon CPU.

Which method should be used?

- A. Storage vMotion
- B. vMotion
- C. Cold Migration
- D. Hot Migration

Answer: (SHOW ANSWER)

Explanation/Reference:

Reference: <https://kb.vmware.com/s/article/1005764#Does%20EVC%20allow%20AMD%20and%20Intel%20CPUs%20to%20be%20vMotion%20compatible>

NEW QUESTION: 207

Refer to the Exhibit. An administrator attempts to enable Enhanced vMotion Compatibility (EVC) on a cluster.

The operation results in a compatibility error, as shown in the exhibit.



What is the likely cause of this error?

- A. There is no shared storage between the hosts in the cluster.
- B. The CPUs in the ESXi host do not support hardware virtualization capabilities.
- C. The XD/NX CPU features have not been enabled in the BIOS of the server.
- D. The CPUs in the ESXi host are not AMD CPUs.

Answer: (SHOW ANSWER)

NEW QUESTION: 208

Which two statements are true regarding VMware vSphere Flash Read Cache (vFRC)? (Choose two.)

- A. Cache fills and cache evictions happen in the granularity of a cache block size.
- B. vFRC caches data from both read and write I/Os, but write I/Os are always serviced by the underlying storage.
- C. vFRC caches data from both read and write I/Os, but write I/Os are always serviced by the underlying cache data.
- D. Cache fills and cache evictions happen in the granularity of the disk block size.

Answer: A,B (LEAVE A REPLY)

Explanation/Reference:

Reference: <http://www.yellow-bricks.com/2013/09/11/frequently-asked-questions-vsphere-flash-read-cache/>

NEW QUESTION: 209

A vSphere Administrator notices that sometimes they receive poor network throughput for multiple port groups that reside on a vSwitch with multiple physical uplinks (vmnics). The configuration on the ESXi host is identical to other hosts that are working properly in the same cluster.

What should be done next?

- A. Restart Management agents in ESXi Using Direct Console User Interface (DCUI).
- B. Add additional resources to the virtual machines that are powered on.
- C. Alter the failover order of the vmnics until a bad vmnic is found.
- D. Add additional port groups to the vSwitch.

Answer: ([SHOW ANSWER](#))

NEW QUESTION: 210

Refer to the Exhibit. An administrator has configured network connectivity for a new virtual machine, as shown in the Exhibit.



What will occur with the network traffic of this virtual machine when communicating externally from vSwitch1?

- A. The virtual machine will communicate on both uplinks
- B. The virtual machine will only communicate on vmnic1
- C. The virtual machine will fail to communicate externally
- D. The virtual machine will only communicate on vmnic2

Answer: ([SHOW ANSWER](#))

NEW QUESTION: 211

A vSphere Administrator notices that upgrading VMware Tools on a single VM fails. Upon closer inspection, the summary tab shows that the VMware Tools status is unmanaged.

What is true about this virtual machine?

- A. There are not any vSphere users that have permissions for the virtual machine.
- B. The VMware Tools are so old that ESXi fails to upgrade the tools.
- C. The VMware Tools were installed with non-default options chosen.
- D. The VMware tools installed is an Operating System specific Package (OSP).

Answer: ([SHOW ANSWER](#))

Explanation/Reference:

Reference: <https://www.slideshare.net/RamPrasadOhnu/vmware-toolsinstallationconfiguration>

Valid 2V0-602 Dumps shared by ExamDiscuss.com for Helping Passing 2V0-602 Exam!
ExamDiscuss.com now offer the **newest 2V0-602 exam dumps**, the ExamDiscuss.com 2V0-602 exam **questions have been updated** and **answers have been corrected** get the **newest** ExamDiscuss.com 2V0-602 dumps with Test Engine here:
<https://www.examdisscuss.com/VMware/exam/2V0-602/premium/> (**385 Q&As Dumps, 35%OFF**
Special Discount Code: freecram)

NEW QUESTION: 212

An administrator is attempting to migrate a large Hadoop virtual machine using vMotion. The administrator notices a delay when the machine is quiesced. The Hadoop virtual machine is processing many transactions a second to an in-memory database. Which two actions would help reduce the amount of time needed to perform a vMotion on this virtual machine? (Choose two.)

- A. Disable Fault Tolerance before performing the vMotion.
- B. Add an additional management network to help transmit the data quicker.
- C. Use a 10Gbps Network card for the vMotion vmkernel port.
- D. Use multiple NICs for the vMotion vmkernel port.

Answer: C,D (LEAVE A REPLY)

NEW QUESTION: 213

An administrator is attempting to remove an ESXi 6.x host from a vSphere Distributed Switch (vDS). When the administrator attempts to remove the host, the following error is observed:
The resource '16' is still in use.

What three steps are needed to successfully remove the host from the switch? (Choose three.)

- A. Select Manage Ports on the vDS for the host.
- B. Locate all ports currently in use on the vDS for the host.
- C. Migrate or delete any vmkernel or virtual machine adapters associated with the switch.
- D. Remove all network cards from the switch before trying to remove the host.
- E. Create a standard switch for everything to be automatically be migrated to.

Answer: (SHOW ANSWER)

Explanation/Reference:

Reference:

<https://docs.vmware.com/en/VMware-vSphere/6.0/com.vmware.vsphere.troubleshooting.doc/GUID-038AC93F-D710-48ED-8E3B-258A23FB2930.html>

NEW QUESTION: 214

An administrator is unable to login to vCenter Server when using the vSphere web client. The administrator successfully accessed vCenter Server using the client earlier the same day. What is the most appropriate first step the administrator should take to resolve this issue?

- A. Verify the vSphere Web Server service is running on the vCenter Server

- B. Verify the administrator has permissions configured in vCenter Server
- C. Verify the vCenter Single Sign-On service is running on the vCenter Server
- D. Verify the web browser being used has Adobe Flash plugin version 11.5 or later

Answer: ([SHOW ANSWER](#))

NEW QUESTION: 215

An administrator is re-provisioning an ESXi host and moving it to another datacenter. Which DCUI option should the administrator use to revert the system configuration to the default settings?

- A. Renew Default System Configuration
- B. Revert System Configuration
- C. Rebuild Default System Configuration
- D. Reset System Configuration

Answer: ([SHOW ANSWER](#))

NEW QUESTION: 216

Which two options can change the thin provisioned disk to thick provisioned? (Choose two.)

- A. Use vMotion to migrate the VM to another ESXi host without moving the disks.
- B. Use Storage vMotion of the running VM to the same datastore and select Thick Provision.
- C. Power off the VM, locate the VMDK disk in the Datastore browser, right-click that and select Inflate.
- D. Use Storage vMotion of the running VM to another datastore and select Thick Provision.

Answer: ([SHOW ANSWER](#))

Explanation/Reference:

Reference https://pubs.vmware.com/vsphere-65/index.jsp?topic=%2Fcom.vmware.vsphere.vm_admin.doc%2FGUID-E8F50BEC-F575-4AB1-BC77-D9A13CDBDCF7.html

NEW QUESTION: 217

Which scenario shows a reason for VMware Tools failing to install?

- A. Guest OS Antivirus is blocking the VMware Tools installation.
- B. Virtual machine is powered on.
- C. Guest OS has 64-bit ldd (list dynamic dependencies) utility installed.
- D. Virtual machine has a CD-ROM configured.

Answer: ([SHOW ANSWER](#))

NEW QUESTION: 218

A vSphere Administrator sees the alarm:

vSphere HA virtual machine failed to failover

This occurred for a number of virtual machines on a particular ESXi host in a cluster with vSphere High Availability (HA) enabled. The virtual machines guest operating systems never reported a power event. What happened?

- A. The ESXi host is still running but has disconnected from the network.
- B. The virtual machines were vMotioned off of the ESXi host.
- C. The ESXi host failed and vSphere HA successfully failed over the virtual machines.
- D. The previous virtual machine cloning operations failed to complete.

Answer: ([SHOW ANSWER](#))

NEW QUESTION: 219

A vSphere Administrator just finished installing new software on the Windows vCenter Server and notices that vCenter Server services no longer start properly.

What two tasks should be done next? (Choose two.)

- A. Check for network port conflicts.
- B. Contact the server hardware manufacturer.
- C. Check the vCenter Server logs.
- D. Reinstall vCenter Server.

Answer: ([SHOW ANSWER](#))

NEW QUESTION: 220

Which three features can be enabled for a new host cluster? (Choose three.)

- A. Fault Tolerance
- B. Distributed Resource Scheduling
- C. Virtual SAN
- D. Storage Distributed Resource Scheduling
- E. High Availability

Answer: B,C,E ([LEAVE A REPLY](#))

NEW QUESTION: 221

What three types of widgets can be added to a vRealize Log Insight Custom Dashboard? (Choose three.)

- A. badge widget
- B. event trends widget
- C. query list widget
- D. heatmap widget
- E. chart widget

Answer: ([SHOW ANSWER](#))

Explanation/Reference:

Reference <https://docs.vmware.com/en/vRealize-Log-Insight/4.3/com.vmware.log-insight.user.doc/GUID-ACF41E9A-4DC4-4071-AE45-FA296525D64C.html>

NEW QUESTION: 222

What are three valid disk configurations for the vSphere Data Protection 6.x Appliance? (Choose three.)

- A. 2TB

- B. 1.5TB
- C. 4TB
- D. 1TB
- E. 500GB

Answer: ([SHOW ANSWER](#))

NEW QUESTION: 223

During a new vSphere Distributed Switch configuration, where does the Maximum Transmission Unit (MTU) value get modified?

- A. Uplink Settings
- B. Switch Settings
- C. Portgroup Settings
- D. NIC Teaming Settings

Answer: ([SHOW ANSWER](#))

Explanation/Reference:

Reference: <https://kb.vmware.com/s/article/1010557>

NEW QUESTION: 224

When is it possible to place a VMFS5 datastore in maintenance mode?

- A. When it is a member of Virtual SAN cluster
- B. When it is a member of a Virtual Volume
- C. When it is a member of a multi-extent datastore
- D. When it is a member of a Storage DRS cluster

Answer: D ([LEAVE A REPLY](#))

NEW QUESTION: 225

Which two configurable options apply to both virtual machine CPU and memory allocation? (Choose two.)

- A. Shares
- B. Reserve All
- C. Reservation
- D. Resource Pool

Answer: A,C ([LEAVE A REPLY](#))

NEW QUESTION: 226

What is a benefit of using VMware Data Protection (VDP)?

- A. Provides support for guest-level backups and restores of Microsoft SQL Servers, Exchange Servers, and Share Point Servers.
- B. Reduces disk space consumed by virtual machine data using deduplication.
- C. Provides direct access to VDP configuration integrated into the vSphere Client.

D. Provides support for advanced storage services including replication, encryption, deduplication, and compression.

Answer: ([SHOW ANSWER](#))

Valid 2V0-602 Dumps shared by ExamDiscuss.com for Helping Passing 2V0-602 Exam!

ExamDiscuss.com now offer the **newest 2V0-602 exam dumps**, the ExamDiscuss.com 2V0-602 exam **questions have been updated** and **answers have been corrected** get the **newest** ExamDiscuss.com 2V0-602 dumps with Test Engine here:

<https://www.examd Discuss.com/VMware/exam/2V0-602/premium/> (**385 Q&As Dumps, 35%OFF**

Special Discount Code: freecram)

NEW QUESTION: 227

What are three goals of resource management within a cluster? (Choose three.)

- A. To provide solutions to potential problems that you might encounter when using vCenter Server.
- B. To provide additional network administration capabilities.
- C. To control the relative importance of virtual machines and provide flexible dynamic partitioning.
- D. To prevent virtual machines from monopolizing resources and to guarantee predictable service rates.
- E. To exploit undercommitted resources and overcommit with graceful degradation.

Answer: ([SHOW ANSWER](#))

NEW QUESTION: 228

Virtual machines do not power on after completing the clone or deploy from template workflow in the vSphere Web Client.

What two solutions will fix this problem? (Choose two.)

- A. Increase the virtual machine memory reservation.
- B. Increase the amount of memory assigned to the virtual machine.
- C. Increase the EVC compatibility mode setting.
- D. Increase the datastore size where the virtual machine swap file exists.

Answer: ([SHOW ANSWER](#))

Explanation/Reference:

Reference: [https://pubs.vmware.com/vsphere-51/index.jsp?topic=%](https://pubs.vmware.com/vsphere-51/index.jsp?topic=%2Fcom.vmware.vsphere.troubleshooting.doc%2FGUID-2742CE14-20FD-416F-B89C-A156053A973F.html)

[2Fcom.vmware.vsphere.troubleshooting.doc%2FGUID-2742CE14-20FD-416F-B89C-A156053A973F.html](https://pubs.vmware.com/vsphere-51/index.jsp?topic=%2Fcom.vmware.vsphere.troubleshooting.doc%2FGUID-2742CE14-20FD-416F-B89C-A156053A973F.html)

Valid 2V0-602 Dumps shared by ExamDiscuss.com for Helping Passing 2V0-602 Exam!

ExamDiscuss.com now offer the **newest 2V0-602 exam dumps**, the ExamDiscuss.com 2V0-602 exam **questions have been updated** and **answers have been corrected** get the **newest**

ExamDiscuss.com 2V0-602 dumps with Test Engine here:

<https://www.examdiscuss.com/VMware/exam/2V0-602/premium/> (385 Q&As Dumps, **35%OFF**

Special Discount Code: **freecram**)