

# Microsoft.MS-900.v2019-12-22.q45

<b>Exam Code:</b>	MS-900
<b>Exam Name:</b>	Microsoft 365 Fundamentals
<b>Certification Provider:</b>	Microsoft
<b>Free Question Number:</b>	45
<b>Version:</b>	v2019-12-22
<b># of views:</b>	2475
<b># of Questions views:</b>	51545
<a href="https://www.freecram.net/torrent/Microsoft.MS-900.v2019-12-22.q45.html">https://www.freecram.net/torrent/Microsoft.MS-900.v2019-12-22.q45.html</a>	

## NEW QUESTION: 1

A company plans to migrate to a hybrid cloud infrastructure.

You need to determine where to manage the different features after the hybrid deployment is complete.

Match each item to the location where it will be managed. To answer, drag the appropriate item from the column on the left to its location on the right. Each item may be used once, more than once, or not at all.

NOTE: Each correct selection is worth one point.

Configuration locations	Option	
Microsoft 365 only	Configure multi-factor authentication for cloud services.	Configuration location
on-premises only	Configure email disclaimers.	Configuration location
both Microsoft 365 and on-premises	Configure compliance.	Configuration location
	Set frequency of Microsoft Office 365 updates.	Configuration location

## Answer:

Configuration locations	Option	
Microsoft 365 only	Configure multi-factor authentication for cloud services.	both Microsoft 365 and on-premises
on-premises only	Configure email disclaimers.	both Microsoft 365 and on-premises
both Microsoft 365 and on-premises	Configure compliance.	Microsoft 365 only
	Set frequency of Microsoft Office 365 updates.	on-premises only

Explanation:

References:

<https://docs.microsoft.com/en-us/office365/securitycompliance/go-to-the-securitycompliance-center>

<https://docs.microsoft.com/en-us/exchange/security-and-compliance/mail-flow-rules/disclaimers-signatures-footers-or-headers>

<https://www.itprotoday.com/email-and-calendaring/configure-email-disclaimer-exchange-server-2016>

<https://docs.microsoft.com/en-us/office365/troubleshoot/administration/switch-channel-for-office-365>

### NEW QUESTION: 2

A company deploys Microsoft Azure AD. You run the Identity Secure Score report. The report displays five security items. Which three security items on the report have the most impact on the score? Each correct answer presents a complete solution. NOTE: Each correct selection is worth one point.

- A. Delete/block accounts not used in last 30 days.
- B. Enable policy to block legacy authentication.
- C. Enable user risk policy.
- D. Do not expire passwords.
- E. Require multi-factor authentication for all users.

Answer: ([SHOW ANSWER](#))

### NEW QUESTION: 3

Match each Microsoft 365 feature to its availability.

Instructions: To answer, drag the appropriate feature from the column on the left to its availability on the right. Each feature may be used once, more than once, or not at all.

NOTE: Each correct match is worth one point.

Features	Availability	Feature
	Available to all customers	<input type="text"/>
Private preview	Can be turned on for evaluation.	<input type="text"/>
Public preview	Available to specific customers	<input type="text"/>
General availability	Compliance testing completed	<input type="text"/>
	Available for purchase	<input type="text"/>

Answer:

Features	Availability	Feature
	Available to all customers	General availability
Private preview	Can be turned on for evaluation.	Public preview
Public preview	Available to specific customers	Private preview
General availability	Compliance testing completed	Private preview
	Available for purchase	General availability

#### NEW QUESTION: 4

This question requires that you evaluate the bold text to determine if it is correct.

You use Microsoft Intune for device management. You must determine how many devices run each operating system.

You must launch Intune and navigate to the Mobile Apps blade.

Select the correct answer if the underlined text does not make the statement correct. Select "No change is needed" if the underlined text makes the statement correct.

- A. Device configuration
- B. Device compliance
- C. No change is needed
- D. Devices

**Answer:** ([SHOW ANSWER](#))

References:

<https://docs.microsoft.com/en-us/intune/device-inventory>

#### NEW QUESTION: 5

An organization has a Microsoft 365 subscription. You plan to implement multi-factor authentication. For each of the following statements, select Yes if the statement is true.

Otherwise, select No.

NOTE: Each correct selection is worth one point.

**Statement**



Yes

No

After users are enrolled in multi-factor authentication, they must configure a second authentication factor the next time they sign in.

Enabling multi-factor authentication requires an additional subscription purchase.

Complete multi-factor authentication by using text messages, a smartphone app, or a phone call.

**Answer:**

**Statement**

Yes

No

After users are enrolled in multi-factor authentication, they must configure a second authentication factor the next time they sign in.

Enabling multi-factor authentication requires an additional subscription purchase.

Complete multi-factor authentication by using text messages, a smartphone app, or a phone call.

Explanation:

References:

<https://docs.microsoft.com/en-us/office365/enterprise/multi-factor-authentication-for-your-office-365-dev-test-environment>

**NEW QUESTION: 6**

You are the Azure administrator for a company. The company uses only Platform as a Service (PaaS).

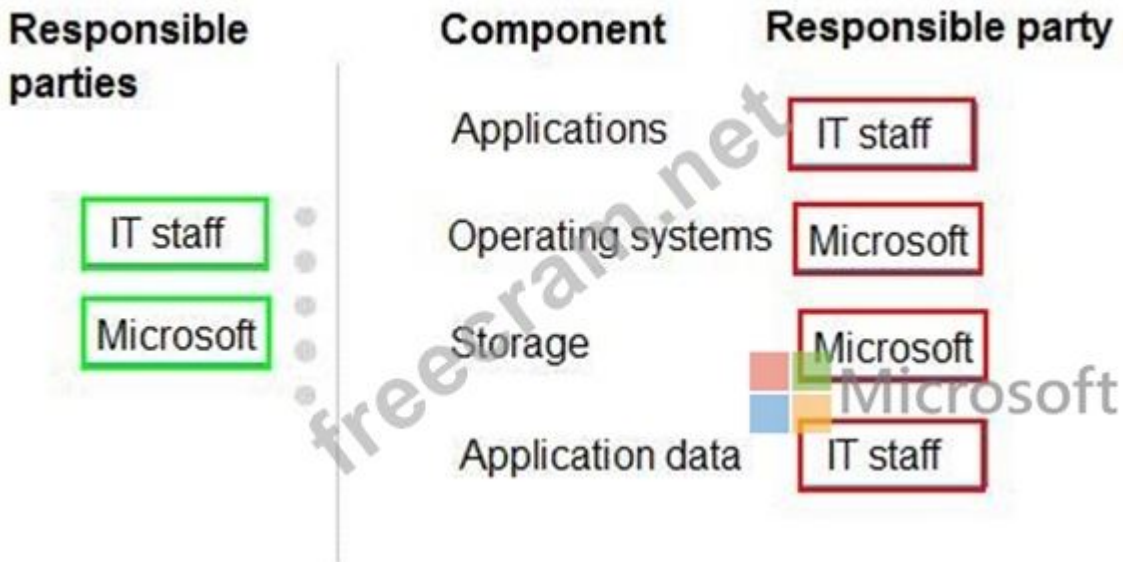
You need to identify which solution components Microsoft must manage and which solution components your IT staff must manage.

Match each management owner to its component. To answer, drag the responsible party from the column on the left to its component on the right. Each party may be used once, more than once, or not at all.

NOTE: Each correct selection is worth one point.



Answer:



Explanation:

References:

<https://www.itprotoday.com/industry-perspectives/choosing-cloud-model-saas-versus-paas>

### NEW QUESTION: 7

An organization migrates to Microsoft 365. The company has an on-premises infrastructure that includes Exchange Server and Active Directory Domain Services. Client devices run Windows 7. You need to determine which products require the purchase of Microsoft 365 licenses for new employees.

Which product licenses should the company purchase? To answer, select the appropriate options in the answer area.

NOTE: Each correct selection is worth one point.

## Product license

## License required

Windows 10 Pro Upgrade

	▼
Required	
Not required	

 Microsoft Office Professional

	▼
Required	
Not required	

Windows Server

	▼
Required	
Not required	

Microsoft Exchange Client Access

	▼
Required	
Not required	

**Answer:**

Product license	License required						
Windows 10 Pro Upgrade	<table border="1"><tr><td></td><td>▼</td></tr><tr><td>Required</td><td></td></tr><tr><td>Not required</td><td></td></tr></table>		▼	Required		Not required	
	▼						
Required							
Not required							
Microsoft Office Professional	<table border="1"><tr><td></td><td>▼</td></tr><tr><td>Required</td><td></td></tr><tr><td>Not required</td><td></td></tr></table>		▼	Required		Not required	
	▼						
Required							
Not required							
Windows Server	<table border="1"><tr><td></td><td>▼</td></tr><tr><td>Required</td><td></td></tr><tr><td>Not required</td><td></td></tr></table>		▼	Required		Not required	
	▼						
Required							
Not required							
Microsoft Exchange Client Access	<table border="1"><tr><td></td><td>▼</td></tr><tr><td>Required</td><td></td></tr><tr><td>Not required</td><td></td></tr></table>		▼	Required		Not required	
	▼						
Required							
Not required							

Explanation:

References:

<https://docs.microsoft.com/en-us/microsoft-365/enterprise/migration-microsoft-365-enterprise-workload#result>

### NEW QUESTION: 8

A company has 250 employees.

You need to migrate all users to Microsoft 365 and meet the following requirements:

Provide a user-centric licensing solution for all users.

Manage devices from a single location.

Minimize licensing costs.

Which licensing model should you use?

- A. Microsoft 365 Business
- B. Microsoft 365 Education
- C. Microsoft 365 Enterprise E3
- D. Microsoft 365 Enterprise E5

**Answer: (SHOW ANSWER)**

References:

<https://products.office.com/en-za/compare-all-microsoft-office-products?tab=2>

<https://docs.microsoft.com/en-us/microsoft-365/business/support/microsoft-365-business-faqs>

### NEW QUESTION: 9

A company deploys Exchange Online and SharePoint Online.

You must audit and assessment report for the Microsoft 365 cloud services that the company uses.

You need to provide the required documents.

Which Microsoft site should you use to obtain this information?

- A. Compliance Manager
- B. Service Trust Portal
- C. Office 365 Security and Compliance Center
- D. Azure portal

**Answer: (SHOW ANSWER)**

References:

[https://servicetrust.microsoft.com/ViewPage/TrustDocumentsV3?docTab=7f51cb60-3d6c-11e9-b2af-7bb9f5d2d913\\_FAQ\\_and\\_White\\_Papers](https://servicetrust.microsoft.com/ViewPage/TrustDocumentsV3?docTab=7f51cb60-3d6c-11e9-b2af-7bb9f5d2d913_FAQ_and_White_Papers)

### NEW QUESTION: 10

You are the Microsoft 365 administrator for a company.

Users in the IT department must receive new Office 365 preview features before the features are deployed to other users in the company.

You need to ensure only the users in the IT department receive preview features.

Which two actions should you perform? Each correct answer represents part of the solution. (Choose two.) NOTE: Each correct selection is worth one point.

- A. Instruct users to navigate to <http://insider.office.com> and sign up for Office Insider.

- B. Instruct users to update Office ProPlus.
- C. In the organizational profile, set the update preference to Targeted release for selected users.
- D. Instruct users to uninstall Office ProPlus and then reinstall the software.
- E. In the organizational profile, set the update preference to Standard release.

**Answer: (SHOW ANSWER)**

References:

<https://insider.office.com/en-us/>

<https://docs.microsoft.com/en-us/office365/admin/manage/release-options-in-office-365?view=o365-worldwide>

### **NEW QUESTION: 11**

You are a Microsoft 365 administrator for a company.

Several users report that they receive emails which have a PDF attachment. The PDF attachment launches malicious code.

You need to remove the message from inboxes and disable the PDF threat if an affected document is opened.

Which feature should you implement?

- A. Microsoft Exchange Admin Center block lists
- B. Sender Policy Framework
- C. Advanced Threat Protection anti-phishing
- D. zero-hour auto purge
- E. DKIM signed messages with mail flow rules

**Answer: (SHOW ANSWER)**

References:

<https://docs.microsoft.com/en-us/office365/securitycompliance/atp-anti-phishing>

### **NEW QUESTION: 12**

You are the Microsoft 365 administrator for a company.

Which two admin roles can purchase more licenses? Each correct answer presents a complete solution.

NOTE: Each correct selection is worth one point.

- A. service administrator
- B. user management administrator
- C. global administrator
- D. billing administrator

**Answer: (SHOW ANSWER)**

References:

<https://docs.microsoft.com/en-us/office365/admin/subscriptions-and-billing/buy-licenses?view=o365-worldwide>

### **NEW QUESTION: 13**

A company plans to deploy collaboration tools for employees. The company does not plan to deploy a hybrid environment. You need to identify the features that are available in Teams and Skype for Business Server.

Match each environment to its feature. To answer, drag the appropriate environment from the column on the left to the features on the right. Each environment may be used once, more than once, or not at all.

NOTE: Each correct selection is worth one point.

Environments		Environment
Teams only	Centralized archiving	Environment
Skype for Business Server only	Broadcast meetings	Environment
Teams and Skype for Business Server	Federated meetings	Environment

**Answer:**

Environments		Environment
Teams only	Centralized archiving	Teams only
Skype for Business Server only	Broadcast meetings	Teams and Skype for Business Server
Teams and Skype for Business Server	Federated meetings	Teams and Skype for Business Server

Explanation:

References:

<https://lucavitali.wordpress.com/2017/10/01/sfb-teams-features-comparison-table/>

**NEW QUESTION: 14**

An organization plans to deploy Microsoft Office 2019 or Office 365 ProPlus.

What are two advantages of Office 365 ProPlus? Each correct answer presents a complete solution.

NOTE: Each correct selection is worth one point

- A. Features remain constant through the lifetime of the applications.
- B. Office 365 ProPlus includes downgrade rights.
- C. A single license may be deployed to multiple devices.
- D. Fully functional Office mobile apps are free to install and use.

**Answer: (SHOW ANSWER)**

A single subscription of Office 365 ProPlus allows you to install Office 365 on up to 5 devices. Office 365 ProPlus includes a fully functional, cloud-based online version that is free to use, though it does not require any installation.

Incorrect Answers:

Office 365 subscriptions (E3, E5, etc.) do not allow for downgrading.

Office 365 ProPlus is updated automatically. Updates include updates to existing features as well as new features being added to the product.

References:

<https://xo.xello.com.au/blog/office-365-proplus-top-business-benefits-for-users>

<https://support.office.com/en-us/article/what-s-new-in-office-online-fc1de049-98f3-46da-a5aa-da4a19c3e909?ui=en-US&rs=en-US&ad=US>

### **NEW QUESTION: 15**

You are a Microsoft 365 administrator for a company.

Microsoft plans to release a new feature for Microsoft Excel.

You need to ensure that the feature becomes available for employees to install as soon as possible. To which release channel should you subscribe?

- A. Microsoft release
- B. Standard release
- C. Office 365 team release
- D. Targeted release

**Answer: (SHOW ANSWER)**

References:

<https://docs.microsoft.com/en-us/office365/admin/manage/release-options-in-office-365?view=o365-worldwide>

### **NEW QUESTION: 16**

A company plans to migrate to Microsoft 365. Corporate devices run Windows 7 or Windows 10. You must upgrade all devices to use Office 365 ProPlus and minimize costs.

You need to standardize corporate device deployments.

Which three actions should you perform? Each correct answer presents part of the solution.

NOTE: Each correct selection is worth one point.

- A. Deploy policies by using Microsoft Intune
- B. Deploy policies by using Configuration Manager
- C. Upgrade all devices to Windows 10
- D. Instruct users to download and install a Windows Installer package for Office 365 ProPlus
- E. Implement Windows AutoPilot

**Answer: (SHOW ANSWER)**

**Valid MS-900 Dumps** shared by ExamDiscuss.com for Helping Passing MS-900 Exam!

ExamDiscuss.com now offer the **newest MS-900 exam dumps**, the ExamDiscuss.com

MS-900 exam **questions have been updated** and **answers have been corrected** get the

newest ExamDiscuss.com MS-900 dumps with Test Engine here:

<https://www.examdisscuss.com/Microsoft/exam/MS-900/premium/> (432 Q&As Dumps, 35%OFF

Special Discount Code: **freecram**)

### NEW QUESTION: 17

You are the Microsoft 365 administrator for a company.

A user experiences an issue with SharePoint Online.

You need to resolve the issue.

Which two options can you use? Each correct answer presents a complete solution.

NOTE: Each correct selection is worth one point.

- A. Go to the SharePoint admin center and create a support request.
- B. Contact Microsoft technical support by telephone.
- C. Create a new service request from the Microsoft 365 admin center.
- D. Create a service request from the SharePoint portal.

**Answer: B,C (LEAVE A REPLY)**

References:

<https://www.thewindowsclub.com/microsoft-support-chat-phone-number>

<https://blogs.technet.microsoft.com/praveenkumar/2013/07/17/how-to-create-service-requests-to-contact-office-365-support/>

### NEW QUESTION: 18

For each of the following statements, select Yes if the statement is true. Otherwise, select No.

NOTE: Each correct selection is worth one point.

Statement	Yes	No
A sensitivity level can be used to prevent data loss from Windows devices by turning on the endpoint protection in Microsoft Intune.	<input type="radio"/>	<input type="radio"/>
You can use a sensitivity label to mark the content of documents by adding a custom watermark.	<input type="radio"/>	<input type="radio"/>
After a sensitivity level is applied, the content of documents is encrypted, but the content of email is not encrypted.	<input type="radio"/>	<input type="radio"/>

**Answer:**

Statement	Yes	No
A sensitivity level can be used to prevent data loss from Windows devices by turning on the endpoint protection in Microsoft Intune.	<input checked="" type="radio"/>	<input type="radio"/>
You can use a sensitivity label to mark the content of documents by adding a custom watermark.	<input checked="" type="radio"/>	<input type="radio"/>
After a sensitivity level is applied, the content of documents is encrypted, but the content of email is not encrypted.	<input type="radio"/>	<input checked="" type="radio"/>

Explanation:

References:

<https://docs.microsoft.com/en-us/office365/securitycompliance/sensitivity-labels>

### NEW QUESTION: 19

When you enable external access by using the Microsoft 365 admin portal, data is available to anonymous users.

Review the Bold text. If it makes the statement correct, select "No change is needed". If the statement is incorrect, select the answer choice that makes the statement correct.

- A. No change needed.
- B. the Everyone group is applied to all shares with full control
- C. you must configure Active Directory Federation Services (AD FS)
- D. users can send sharing invitations for specific content

Answer: ([SHOW ANSWER](#))

References:

<https://docs.microsoft.com/en-us/sharepoint/external-sharing-overview>

### NEW QUESTION: 20

A company plans to deploy Microsoft Intune.

Which types of apps can be managed by Intune?

For each of the following statements, select Yes if the statement is true. Otherwise, select No.

NOTE: Each correct selection is worth one point.

Statement	Yes	No
Intune supports management of apps from third-party stores.	<input type="radio"/>	<input type="radio"/>
Intune supports volume licensing of iOS and Android store apps.	<input type="radio"/>	<input type="radio"/>
Intune supports the management of line-of-business and public-facing apps.	<input type="radio"/>	<input type="radio"/>

Answer:

**Statement**



Microsoft

Yes

No

Intune supports management of apps from third-party stores.

Intune supports volume licensing of iOS and Android store apps.

Intune supports the management of line-of-business and public-facing apps.

**NEW QUESTION: 21**

You are a member of a Microsoft Office 365 group named Sales. You create a proposal for a customer by using Word Online.

All team members must be able to review and make changes to the proposal at the same time.

After the proposal is completed, you must share the final document with the customer in read-only format.

You need to ensure that the customer sees the most recent versions of the document.

**Actions**



**Steps**

Microsoft

Add the proposal to the Sales team site in SharePoint Online.

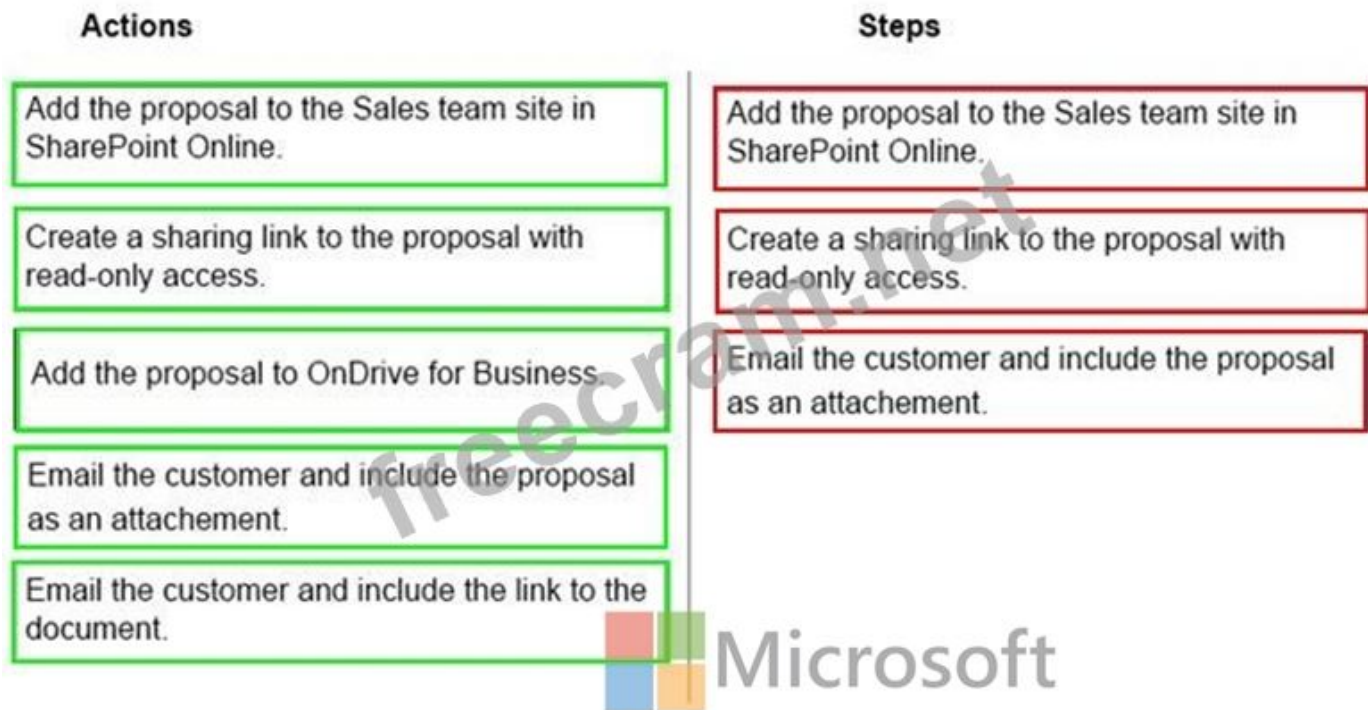
Create a sharing link to the proposal with read-only access.

Add the proposal to OnDrive for Business.

Email the customer and include the proposal as an attachment.

Email the customer and include the link to the document.

**Answer:**



Explanation:

References:

<https://docs.microsoft.com/en-us/office365/admin/setup/set-up-file-storage-and-sharing?view=o365-worldwide>

**NEW QUESTION: 22**

A company plans to purchase Microsoft 365 Enterprise licenses.

Which two options can you use? Each correct answer presents a complete solution.

NOTE: Each correct selection is worth one point.

- A. through a Cloud Solution Provider (CSP)
- B. from the Microsoft website using a corporate credit card
- C. from the Microsoft retail store
- D. with an Enterprise Agreement (EA) subscription from Microsoft

**Answer: A,D (LEAVE A REPLY)**

References:

<https://docs.microsoft.com/en-us/microsoft-365/business/get-microsoft-365-business>

<https://www.microsoft.com/en-us/licensing/licensing-programs/enterprise?activetab=enterprise-tab%3aprimar2>

**NEW QUESTION: 23**

You are the Microsoft 365 administrator for a company.

You need to identify the different features of MyAnalytics and Workspace Analytics.

What are the different features? To answer, drag the appropriate applications to the correct features. Each application may be used once, more than once, or not at all. You may need to drag the split bar between panes or scroll to view content.

NOTE: Each correct selection is worth one point.

Applications	Feature	Application
MyAnalytics	Included in office 365 E5 license	Application
Workspace Analytics	Can be purchased only as an add-on license	Application
	Provides employee work and collaboration metrics	Application
	Permits upload of custom organizational data	Application
	Provides team work and collaboration metrics	Application

**Answer:**

Applications	Feature	Application
MyAnalytics	Included in office 365 E5 license	MyAnalytics
Workspace Analytics	Can be purchased only as an add-on license	Workspace Analytics
	Provides employee work and collaboration metrics	MyAnalytics
	Permits upload of custom organizational data	Workspace Analytics
	Provides team work and collaboration metrics	Workspace Analytics

Explanation:

References:

<https://products.office.com/en-za/business/compare-more-office-365-for-business-plans>

<https://techcommunity.microsoft.com/t5/MyAnalytics/Microsoft-Workplace-Analytics/td-p/84884>

<https://docs.microsoft.com/en-us/office365/servicedescriptions/workplace-analytics-service-description>

<https://docs.microsoft.com/en-us/workplace-analytics/setup/upload-organizational-data>

### NEW QUESTION: 24

You manage point-of-sale terminals that run Windows 7.

You must upgrade the terminals to Windows 10. Terminals will not be upgraded again for at least five years. You have the following requirements:

- \* Perform consistent scheduling of upgrades across all devices.
- \* Minimize costs.

You need to prepare for the upgrades.

What should you use? To answer, select the appropriate options in the answer area.

NOTE: Each correct selection is worth one point.

Option	Value
Windows 10 version	<input type="text"/> <ul style="list-style-type: none"> <li>Windows 10 Pro</li> <li>Windows 10 Home</li> <li>Windows 10 Enterprise</li> <li>Windows 10 Enterprise LTSB</li> </ul>
Servicing channel	<input type="text"/> <ul style="list-style-type: none"> <li>Semi-annual channel</li> <li>Long-term servicing channel</li> <li>Semi-annual channel (targeted)</li> <li>Insider</li> </ul>
Servicing tool	<input type="text"/> <ul style="list-style-type: none"> <li>Microsoft Intune</li> <li>Windows Autopilot</li> <li>Windows Server Update Services</li> <li>System Center Configuration Manager</li> </ul>

**Answer:**

Option	Value
Windows 10 version	<input type="text"/> <ul style="list-style-type: none"> <li>Windows 10 Pro</li> <li>Windows 10 Home</li> <li>Windows 10 Enterprise</li> <li>Windows 10 Enterprise LTSB</li> </ul>
Servicing channel	<input type="text"/> <ul style="list-style-type: none"> <li>Semi-annual channel</li> <li>Long-term servicing channel</li> <li>Semi-annual channel (targeted)</li> <li>Insider</li> </ul>
Servicing tool	<input type="text"/> <ul style="list-style-type: none"> <li>Microsoft Intune</li> <li>Windows Autopilot</li> <li>Windows Server Update Services</li> <li>System Center Configuration Manager</li> </ul>

Explanation:

References:

<https://docs.microsoft.com/en-us/windows/deployment/update/waas-overview#long-term-servicing-channel>

<https://docs.microsoft.com/en-us/windows/deployment/update/waas-overview#servicing-tools>

**NEW QUESTION: 25**

For each of the following statements, select Yes if the statement is true. Otherwise, select No.

NOTE: Each correct selection is worth one point.

Statement	Yes	No
Microsoft MyAnalytics supports Microsoft PowerBI templates.	<input type="radio"/>	<input type="radio"/>
Microsoft MyAnalytics supports Microsoft Outlook add-ins.	<input type="radio"/>	<input type="radio"/>
Microsoft Workplace Analytics supports weekly email digests.	<input type="radio"/>	<input type="radio"/>

Answer:

Statement	Yes	No
Microsoft MyAnalytics supports Microsoft PowerBI templates.	<input type="radio"/>	<input checked="" type="radio"/>
Microsoft MyAnalytics supports Microsoft Outlook add-ins.	<input checked="" type="radio"/>	<input type="radio"/>
Microsoft Workplace Analytics supports weekly email digests.	<input type="radio"/>	<input type="radio"/>

Explanation:

References:

<https://docs.microsoft.com/en-us/workplace-analytics/myanalytics/use/add-in>

<https://docs.microsoft.com/en-us/workplace-analytics/myanalytics/mya-landing-page>

<https://docs.microsoft.com/en-us/workplace-analytics/index-orig>

**NEW QUESTION: 26**

A company deploys Microsoft Azure AD. You enable multi-factor authentication.

You need to inform users about the multi-factor authentication methods that they can use.

Which of the following methods is NOT a valid multi-factor authentication method in Microsoft 365?

- A. Receive an automated call on the desk phone that includes a verification code
- B. Insert a small card in to a desktop computer and provide a PIN code when prompted
- C. Receive a call on a mobile phone and select the pound sign (#) when prompted
- D. Receive an SMS text message that includes a verification code

Answer: ([SHOW ANSWER](#))

References:

<http://techgenix.com/multifactor-authentication-office-365/>

**NEW QUESTION: 27**

A company experiences a Microsoft 365 outage that affects an entire region.

You check the Service Health Dashboard and observe that the service is healthy.

You need to find information in Service Health Dashboard that describes what happened during the outage.

What should you use?

- A. Message Center
- B. incident closure summary
- C. Post-Incident Review (PIR)
- D. service request

**Answer: ([SHOW ANSWER](#))**

References:

<https://docs.microsoft.com/en-us/office365/servicedescriptions/office-365-platform-service-description/service-health-and-continuity>

### **NEW QUESTION: 28**

A company that has 50 employees plans to purchase a Microsoft 365 Business subscription.

Which two payment methods are available? Each correct answer presents a complete solution

NOTE: Each correct selection is worth one point.

- A. PayPal
- B. automatic bank transfer
- C. Enterprise Agreement
- D. credit card or debit card

**Answer: ([SHOW ANSWER](#))**

References:

<https://docs.microsoft.com/en-us/office365/admin/subscriptions-and-billing/pay-for-your-subscription?view=o365-worldwide>

### **NEW QUESTION: 29**

A company has a Microsoft 365 E5 subscription. The company plans to use eDiscovery to meet legal discovery requirements.

For each of the following statements, select Yes if the statement is true. Otherwise, select No.

NOTE: Each correct selection is worth one point.



**Statement**

**Yes**

**No**

You can create eDiscovery cases to preserve data in Exchange Online mailboxes.

Members of the discovery management role group have permissions to export messages.

You can create one eDiscovery case to preserve data in an Exchange Server mailbox and a OneDrive for Business site.

**Answer:**

**Statement**

**Yes**

**No**

You can create eDiscovery cases to preserve data in Exchange Online mailboxes.

Members of the discovery management role group have permissions to export messages.

You can create one eDiscovery case to preserve data in an Exchange Server mailbox and a OneDrive for Business site.

Explanation:

References:

<https://docs.microsoft.com/en-us/office365/securitycompliance/ediscovery#ediscoverycases>

<https://docs.microsoft.com/en-us/office365/securitycompliance/manage-ediscovery-cases>

<https://docs.microsoft.com/en-us/office365/securitycompliance/assign-ediscovery-permissions>

**NEW QUESTION: 30**

A company plans to purchase Microsoft 365.

You need to give management an overview of the Microsoft 365 pricing model.

Which of the following describes how the company will be billed for Microsoft 365?

**A.** The company will make a single payment for Microsoft 365, after which it owns the license for Microsoft

365 and can use it in an unlimited fashion.

**B.** The company will be charged annually for a single Microsoft 365 license that can be shared among all employees.

**C.** The company will be charged according to the amount of computing resources it uses each month across all users.

**D.** The company will be charged according to the number of user licenses required.

**Answer:** ([SHOW ANSWER](#))

**NEW QUESTION: 31**

This question requires that you evaluate the Bold text to determine if it is correct.

A company needs to protect documents and emails by automatically applying classifications and labels. You must minimize costs.

You should implement Information Rights Management.

Review the underlined text. If it makes the statement correct, select No change is needed. if the statement is incorrect, select the answer choice that makes the statement correct.

- A. No change needed.
- B. Azure Information Protection Premium P2
- C. Azure Information Protection Premium P1
- D. Microsoft 365 E3

**Answer: (SHOW ANSWER)**

References:

<https://azure.microsoft.com/en-us/pricing/details/information-protection/>

**Valid MS-900 Dumps** shared by ExamDiscuss.com for Helping Passing MS-900 Exam! ExamDiscuss.com now offer the **newest MS-900 exam dumps**, the ExamDiscuss.com MS-900 exam **questions have been updated** and **answers have been corrected** get the **newest** ExamDiscuss.com MS-900 dumps with Test Engine here:  
<https://www.examdumps.com/Microsoft/exam/MS-900/premium/> (432 Q&As Dumps, **35%OFF**  
**Special Discount Code: freecram**)

**NEW QUESTION: 32**

For each of the following statements, select Yes if the statement is true. Otherwise, select No.

NOTE: Each correct selection is worth one point.

 Statement	Yes	No
It is possible to connect cloud services to on-premises server resources.	<input type="radio"/>	<input type="radio"/>
Scaling cloud-hosted infrastructure components includes expanding server resources and networking components.	<input type="radio"/>	<input type="radio"/>

**Answer:**

Statement



Yes

No

It is possible to connect cloud services to on-premises server resources.

Scaling cloud-hosted infrastructure components includes expanding server resources and networking components.

**NEW QUESTION: 33**

A company has a Microsoft 365 subscription that includes Office apps.

A user has identified a new issue while working with an app. When the user attempts to create a support request, the following message displays:

`You don't have permission to access this page or perform this action.`

You need to determine the cause of the error message.

What is the cause?

- A. The company does not have Premier support.
- B. The user account is disabled.
- C. The user account is not a member of the global admin role.
- D. The user does not have a license assigned for the app.

Answer: ([SHOW ANSWER](#))

**NEW QUESTION: 34**

You are the Microsoft 365 administrator for a company.

Your company wants to learn more about what happens if the availability of the Microsoft Office 365 services are not met.

Where can you find this information?

- A. Service Level agreement
- B. Microsoft Services agreement
- C. Microsoft Cloud agreement
- D. Microsoft Products and Services agreement
- E. Microsoft Enterprise agreement

Answer: ([SHOW ANSWER](#))

References:

<https://docs.microsoft.com/en-us/office365/servicedescriptions/office-365-platform-service-description/service-level-agreement>

**NEW QUESTION: 35**

Your company has a Microsoft Office 365 subscription.

You need to co-author files with other users.

Which tool should you use?

- A. Microsoft SharePoint Online
- B. Microsoft Exchange Online
- C. Microsoft Skype for Business Online
- D. Microsoft Office Delve

Answer: ([SHOW ANSWER](#))

**NEW QUESTION: 36**

This question requires that you evaluate the bold text to determine if it is correct.

A company needs to protect documents and emails by automatically applying classifications and labels. You must minimize costs. You should implement Microsoft Azure Information Protection for Microsoft Office 365.

Review the underlined text If it makes the statement correct select No change is needed. If the statement is incorrect, select the answer choice that makes the statement correct.

- A. No change needed.
- B. Azure Information Protection Premium P2
- C. Azure Information Protection Premium PI
- D. Microsoft 365 E3

Answer: ([SHOW ANSWER](#))

References:

<https://products.office.com/en-za/business/azure-information-protection-for-office-365>

**NEW QUESTION: 37**

A company deploys Microsoft Intune.

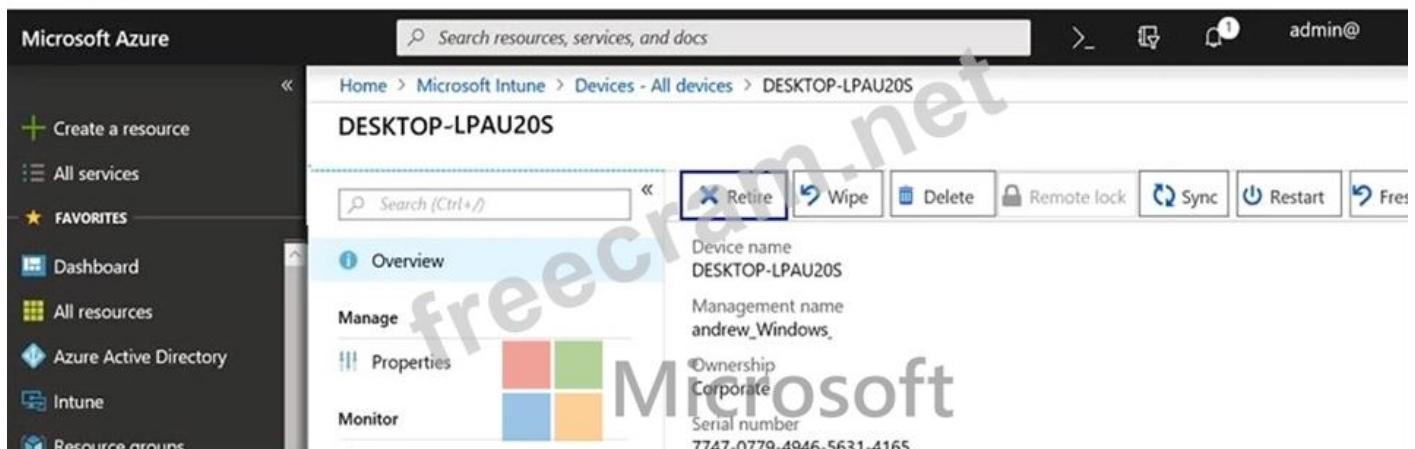
An employee loses a Windows 10 device that contains corporate data.

You need to ensure that the corporate data on the device is secured as quickly as possible.

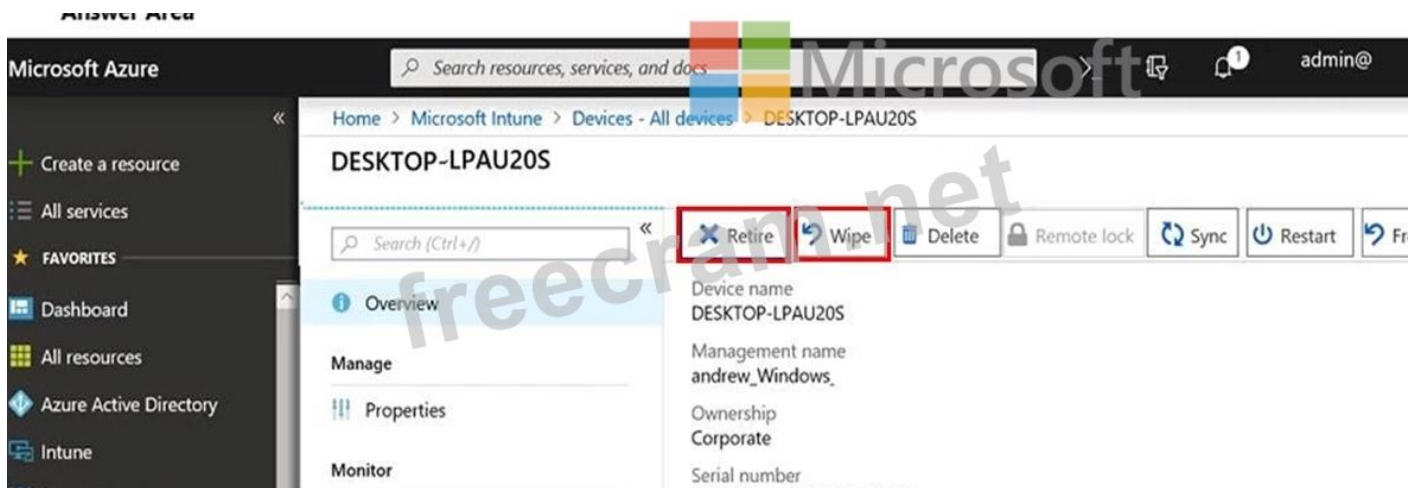
Which four options can you use? To answer, select the appropriate actions in the answer area.

NOTE: Each correct selection is worth one point.

Answer Area



Answer:



### NEW QUESTION: 38

A company has an Exchange Server environment. The company plans to migrate to the cloud. You need to recommend a cloud model that meets the following requirements:

Upgrade the existing email environment

Minimize server and application maintenance

Which model should you recommend?

- A. Platform as a service (PaaS)
- B. Windows as a service (WaaS)
- C. Software as a service (SaaS)
- D. Infrastructure as a service (IAAS)

**Answer:** ([SHOW ANSWER](#))

References:

<https://www.cmswire.com/cms/information-management/cloud-service-models-iaas-saas-paas-how-microsoft-office-365-azure-fit-in-021672.php>

### NEW QUESTION: 39

A company purchases Microsoft 365 E5.

You need to determine which security features you should implement.

Which features should you implement? To answer, drag the appropriate features to the correct scenarios. Each feature may be used once, more than once, or not at all. You may need to drag the split bar between panes or scroll to view content.

NOTE: Each correct selection is worth one point.

Answer Area	Scenario	Feature
<b>Features</b> <input type="text" value="Microsoft Office 365 Secure Score"/>	Provide recommendations to reduce risk.	<input type="text"/>
<input type="text" value="Customer Lockbox"/>	Control how a Microsoft support engineer accesses data during a help session.	<input type="text"/>
<input type="text" value="Microsoft Office 365 Advanced Threat Protection"/>	Protect against unknown malware viruses, and malicious URLs.	<input type="text"/>
<input type="text" value="Data Loss Prevention"/>	Identify sensitive data and create policies that help prevent users from accidentally or intentionally sharing the data.	<input type="text"/>

**Answer:**

Answer Area	Scenario	Feature
<b>Features</b> <input type="text" value="Microsoft Office 365 Secure Score"/>	Provide recommendations to reduce risk.	<input type="text" value="Microsoft Office 365 Secure Score"/>
<input type="text" value="Customer Lockbox"/>	Control how a Microsoft support engineer accesses data during a help session.	<input type="text" value="Customer Lockbox"/>
<input type="text" value="Microsoft Office 365 Advanced Threat Protection"/>	Protect against unknown malware viruses, and malicious URLs.	<input type="text" value="Microsoft Office 365 Advanced Threat Protection"/>
<input type="text" value="Data Loss Prevention"/>	Identify sensitive data and create policies that help prevent users from accidentally or intentionally sharing the data.	<input type="text" value="Data Loss Prevention"/>

**NEW QUESTION: 40**

Your company purchases Microsoft 365 Enterprise and Azure AD P2 licenses. You need to provide identity protection against malicious login attempts. What should you implement?

- A. Azure AD Identity Protection
- B. Azure AD Privileged Identity Management
- C. Azure Information Protection
- D. Azure Identity and Access Management

**Answer:** (SHOW ANSWER)

References:

<https://docs.microsoft.com/en-us/azure/active-directory/identity-protection/overview>

**NEW QUESTION: 41**

You are the Microsoft 365 administrator for a company. You install Microsoft Office 365 ProPlus on five devices. You deactivate one device. Which task can you perform on the deactivated device?

- A. Print a document.

- B. Leave a comment in a document.
- C. Start a new document from a template.
- D. Set properties on a document.

**Answer:** ([SHOW ANSWER](#))

References:

[https://blogs.technet.microsoft.com/office\\_resource\\_kit/2014/01/17/office-365-proplus-multiple-devices-and-deactivation/](https://blogs.technet.microsoft.com/office_resource_kit/2014/01/17/office-365-proplus-multiple-devices-and-deactivation/)

**NEW QUESTION: 42**

Your company uses Microsoft 365 with a business support plan.

You need to identify Service Level Agreements (SLAs) from Microsoft for the support plan.

What response can you expect for each event type? To answer, drag the appropriate responses to the correct event types. Each response may be used once, more than once, or not at all. You may need to drag the split bar between panes or scroll to view content.

NOTE: Each correct selection is worth one point.

Answer Area	
Response	Event type
continuously with a one-hour response time	Critical
during business hours with no commitment for response time	High
continuously with no commitment for response time	Noncritical
continuously with a next-day response time	

**Answer:**

Answer Area	
Response	Event type
continuously with a one-hour response time	Critical
during business hours with no commitment for response time	High
continuously with no commitment for response time	Noncritical
continuously with a next-day response time	

Explanation:

References:

<https://docs.microsoft.com/en-us/office365/servicedescriptions/office-365-platform-service-description/support>

**NEW QUESTION: 43**

You are the Microsoft 365 administrator for a company. You deploy Windows 10 to all devices by using Windows Autopilot.

You need to ensure that employees can install Microsoft Office 365 ProPlus on their devices. What are two possible ways to achieve this goal? Each correct answer presents a part of a solution.

NOTE: Each correct selection is worth one point.

- A. Use the self-install option on the Office 365 dashboard
- B. Download and install the Office ProPlus Windows Installer (MSI) package
- C. Enable auto-deployment of Office 365 apps for all devices
- D. Update the Windows AutoPilot deployment profile to include the Office 365 apps

**Answer: B,D (LEAVE A REPLY)**

References:

<https://docs.microsoft.com/en-us/deployoffice/deploy-office-365-proplus-from-a-local-source>

<https://docs.microsoft.com/en-us/microsoft-365/business/add-autopilot-devices-and-profile>

#### NEW QUESTION: 44

You manage a local Active Directory Domain Services environment. Your company purchases an Enterprise E1 license for all users.

You need to implement self-service password reset. You want to achieve this goal while minimizing costs.

Which two actions should you perform? Each correct answer presents part of the solution.

NOTE: Each correct selection is worth one point.


- A. Upgrade your subscription to Azure AD Premium P2.
- B. Deploy Azure Information Protection.
- C. Upgrade your subscription to Azure AD Premium P1.
- D. Deploy Azure AD Connect.

**Answer: D (LEAVE A REPLY)**

#### NEW QUESTION: 45

For each of the following statements, select Yes if the statement is true. otherwise, select No.

NOTE: Each correct selection is worth one point.

 Statement	Yes	No
You can assign apps to devices that are not enrolled with Microsoft Intune.	<input type="radio"/>	<input type="radio"/>
You can assign wrapped apps, or apps that incorporate the Intune SDK, only if the device is enrolled with Intune.	<input type="radio"/>	<input type="radio"/>
You can install available apps from the web-based Company Portal app regardless of whether the device if enrolled with Intune.	<input type="radio"/>	<input type="radio"/>

**Answer:**

Statement	Yes	No
You can assign apps to devices that are not enrolled with Microsoft Intune.	<input checked="" type="radio"/>	<input type="radio"/>
You can assign wrapped apps, or apps that incorporate the Intune SDK, only if the device is enrolled with Intune.	<input type="radio"/>	<input checked="" type="radio"/>
You can install available apps from the web-based Company Portal app regardless of whether the device is enrolled with Intune.	<input checked="" type="radio"/>	<input type="radio"/>

Explanation:

References:

<https://docs.microsoft.com/en-us/intune/apps-deploy>

**Valid MS-900 Dumps** shared by ExamDiscuss.com for Helping Passing MS-900 Exam! ExamDiscuss.com now offer the **newest MS-900 exam dumps**, the ExamDiscuss.com MS-900 exam **questions have been updated** and **answers have been corrected** get the **newest** ExamDiscuss.com MS-900 dumps with Test Engine here:  
<https://www.examdumps.com/Microsoft/exam/MS-900/premium/> (432 Q&As Dumps, **35%OFF**  
**Special Discount Code: freecram**)