

Microsoft.AZ-800.v2022-09-30.q38

Exam Code:	AZ-800
Exam Name:	Administering Windows Server Hybrid Core Infrastructure
Certification Provider:	Microsoft
Free Question Number:	38
Version:	v2022-09-30
# of views:	749
# of Questions views:	8508
https://www.freecram.net/torrent/Microsoft.AZ-800.v2022-09-30.q38.html	

NEW QUESTION: 1

Your network contains an Active Directory Domain Services (AD DS) forest named contoso.com. The forest contains a child domain named east.contoso.com.

in the contoso.com domain, you create two users named Admin1 and Admin2.

You need to ensure that the users can perform the following tasks:

- * Admin1 can create and manage Active Directory sites.
- * Admin2 can deploy domain controller to the east.contoso.com domain.

The solution must use the principle of least privilege.

To which group should you add each user? To answer, select the appropriate options in the answer area.

NOTE Each correct selection is worth one point.

Answer Area

Microsoft

Admin1: Contoso\Administrators
Contoso\Domain Admins
Contoso\Enterprise Admins
East\Administrators

Admin2: Contoso\Administrators
Contoso\Domain Admins
Contoso\Enterprise Admins
East\Administrators
East\Domain Admins

Answer:

Answer Area



freecram.net



Reference:

<https://docs.microsoft.com/en-us/windows-server/remote/remote-access/ras/multisite/configure/step-2-configure-the-multisite-infrastructure>

NEW QUESTION: 2

You have an on premises Active Directory Domain Services (AD DS) domain that syncs with an Azure Active Directory (Azure AD) tenant.

You plan to implement self-service password reset (SSPR) in Azure AD.

You need to ensure that users that reset their passwords by using SSPR can use the new password resources in the AD DS domain.

What should you do?

- A. Deploy the Azure AD Password Protection proxy service to the on premises network.
- B. Run the Microsoft Azure Active Directory Connect wizard and select Password writeback.
- C. Grant the Change password permission for the domain to the Azure AD Connect service account.
- D. Grant the impersonate a client after authentication user right to the Azure AD Connect service account.

Answer: ([SHOW ANSWER](#))

Reference:

<https://docs.microsoft.com/en-us/azure/active-directory/authentication/tutorial-enable-sspr-writeback>

NEW QUESTION: 3

You need to meet the technical requirements for Server4.

Which cmdlets should you run on Server1 and Server4? To answer, select the appropriate options in the answer area.

NOTE: Each correct selection is worth one point.

Server1:

Enable-PSRemoting
Enable-ServerManagerStandardUserRemoting
Set-Item
Start-Service

Server4:

Enable-PSRemoting
Enable-ServerManagerStandardUserRemoting
Set-Item
Start-Service

Answer:

Server1:	
	Enable-PSRemoting
	Enable-ServerManagerStandardUserRemoting
	Set-Item
	Start-Service
Server4:	
	Enable-PSRemoting
	Enable-ServerManagerStandardUserRemoting
	Set-Item
	Start-Service

Reference:

<https://4sysops.com/wiki/enable-powershell-remoting/>

NEW QUESTION: 4

You need to meet the technical requirements for Server1. Which users can currently perform the required tasks?

A. Admin1 Admin2. and Admm3

- B. Admin3 only
- C. Admin1 only
- D. Admin1 and Admin3 only

Answer: ([SHOW ANSWER](#))

NEW QUESTION: 5

You need to meet the technical requirements for VM3
On which volumes can you enable Data Deduplication?

- A. D and E only
- B. C, D, E, and F
- C. D only
- D. C and D only
- E. D, E, and F only

Answer: ([SHOW ANSWER](#))

Reference:

<https://docs.microsoft.com/en-us/windows-server/storage/data-deduplication/interop>

NEW QUESTION: 6

You have a server that runs Windows Server and has the DHCP Server role installed. The server has a scope named Scope1 that has the following configurations:

- * Address range: 192.168.0.2 to 192.168.1.200 . Mask 255.255.254.0
- * Router: 192.168.0.1
- * Lease duration: 3 days
- * DNS server 172.16.0.254

You have 50 Microsoft Teams Phone devices from the same vendor. All the devices have MAC addresses within the same range.

You need to ensure that all the Teams Phone devices that receive a lease from Scope1 have IP addresses in the range of 192.168.1.100 to 192.168.1.200. The solution must NOT affect other DHCP clients that receive IP configurations from Scope1.

What should you create?

- A. a policy
- B. a scope
- C. a fitter
- D. scope options

Answer: ([SHOW ANSWER](#))

Reference:

[https://docs.microsoft.com/en-us/previous-versions/windows/it-pro/windows-server-2012-R2-and-2012/dn425040\(v=ws.11\)](https://docs.microsoft.com/en-us/previous-versions/windows/it-pro/windows-server-2012-R2-and-2012/dn425040(v=ws.11))

NEW QUESTION: 7

Note: This question is part of a series of questions that present the same scenario. Each question in the series contains a unique solution that might meet the stated goals. Some question sets might have more than one correct solution, while others might not have a correct solution. After you answer a question in this section, you will NOT be able to return to it. As a result, these questions will not appear in the review screen.

You are planning the deployment of DNS to a new network.

You have three internal DNS servers as shown in the following table.

Name	Location	IP address	Local DNS zone
Server1	Montreal	10.0.1.10	contoso.local
Server2	Toronto	10.0.2.10	east.contoso.local
Server3	Seattle	10.0.3.10	west.contoso.local

The contoso.local zone contains zone delegations for east.contoso.local and west.contoso.local. All the DNS servers use root hints.

You need to ensure that all the DNS servers can resolve the names of all the internal namespaces and internet hosts.

Solution: On Server2, you create a conditional forwarder for west.contoso.local. On Server3, you create a conditional forwarder for east.contoso.local.

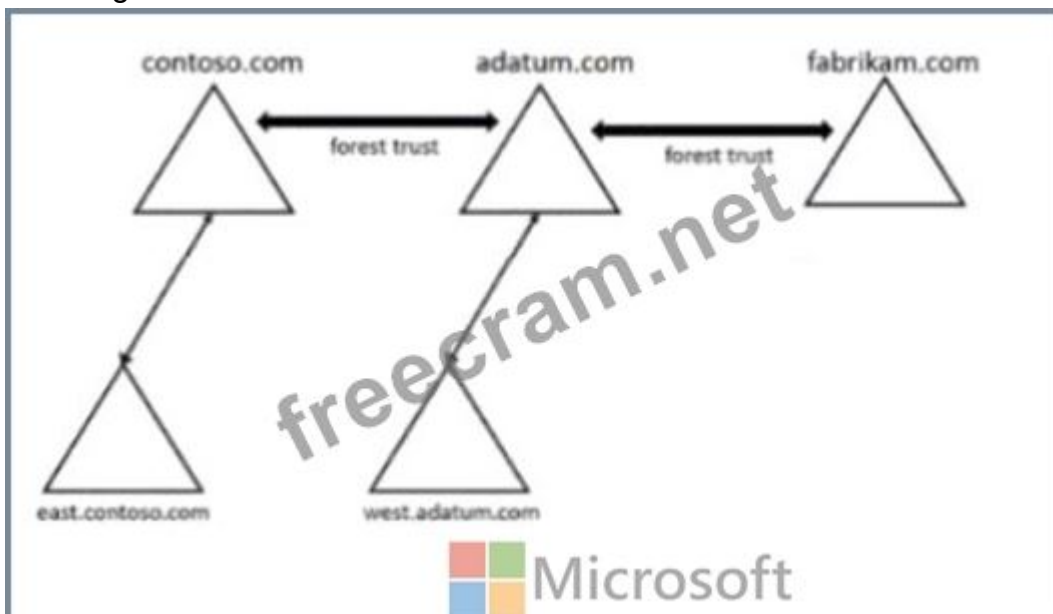
Does this meet the goal?

- A. No
- B. Yes

Answer: ([SHOW ANSWER](#))

NEW QUESTION: 8

Your network contains three Active Directory Domain Services (AD DS) forest as shown in the following exhibit.



The network contains the users shown in the following table.

Name	Domain
User1	east.contoso.com
User2	fabrikam.com

The network contains the security groups shown in the following table.

Name	Type	Domain
Group1	Domain local	west.adatum.com
Group2	Universal	contoso.com
Group3	Universal	east.contoso.com

For each of the following statements, select Yes if the statement is true, Otherwise, select No.

NOTE: Each correct selection is worth one point.

Answer Area

Statements	Yes	No
You can add User1 to Group1.	<input type="radio"/>	<input type="radio"/>
You can add User2 to Group3.	<input type="radio"/>	<input type="radio"/>
You can grant Group2 permissions to the resources in the fabrikam.com domain.	<input type="radio"/>	<input type="radio"/>

Answer:

Statements	Yes	No
You can add User1 to Group1.	<input checked="" type="checkbox"/>	<input type="radio"/>
You can add User2 to Group3.	<input type="radio"/>	<input checked="" type="checkbox"/>
You can grant Group2 permissions to the resources in the fabrikam.com domain.	<input checked="" type="checkbox"/>	<input type="radio"/>

NEW QUESTION: 9

Your network contains an on-premises Active Directory Domain Services (AD DS) domain named contoso.com. The domain contains three servers that run Windows Server and have the Hyper-V server role installed. Each server has a Switch Embedded Teaming (SET) team. You need to verify that Remote Direct Memory Access (RDMA) and all the required Windows Server settings are configured properly on each server.

What should you use?

- A. Server Manager
- B. the validate-DCB cmdlet
- C. the Get-NetAdapter cmdlet
- D. Failover Cluster Manager

Answer: ([SHOW ANSWER](#))

Reference:

<https://github.com/Microsoft/Validate-DCB>

NEW QUESTION: 10

You deploy a new Active Directory Domain Services (AD DS) forest named contoso.com. The domain contains three domain controllers named DC1, DC2, and DC3.

You rename Default-First-Site-Name as Site1.

You plan to ship DC1, DC2, and DC3 to datacenters in different locations.

You need to configure replication between DC1, DC2, and DC3 to meet the following requirements:

Each domain controller must reside in its own Active Directory site.

The replication schedule between each site must be controlled independently.

Interruptions to replication must be minimized.

Which three actions should you perform in sequence in the Active Directory Sites and Services console? To answer, move the appropriate actions from the list of actions to the answer area and arrange them in the correct order.

Actions

Answer Area

Create a connection object between DC1 and DC2.

Create an additional site link that contains Site1 and Site2.

Create two additional sites named Site2 and Site3. Move DC2 to Site2 and DC3 to Site3.

Create a connection object between DC2 and DC3.

Remove Site2 from DEFAULTSITELINK.



Answer:

Answer Area

Create two additional sites named Site2 and Site3. Move DC2 to Site2 and DC3 to Site3.

Create a connection object between DC1 and DC2.

Create a connection object between DC2 and DC3.

- 1 - Create two additional sites named Site2 and Site3. Move DC2 to Site2 and DC3 to Site3.
- 2 - Create a connection object between DC1 and DC2.
- 3 - Create a connection object between DC2 and DC3.

NEW QUESTION: 11

Your network contains an Active Directory Domain Services (AD DS) domain named adatum.com. The domain contains a file server named Server1 and three users named User1, User2, and User3.

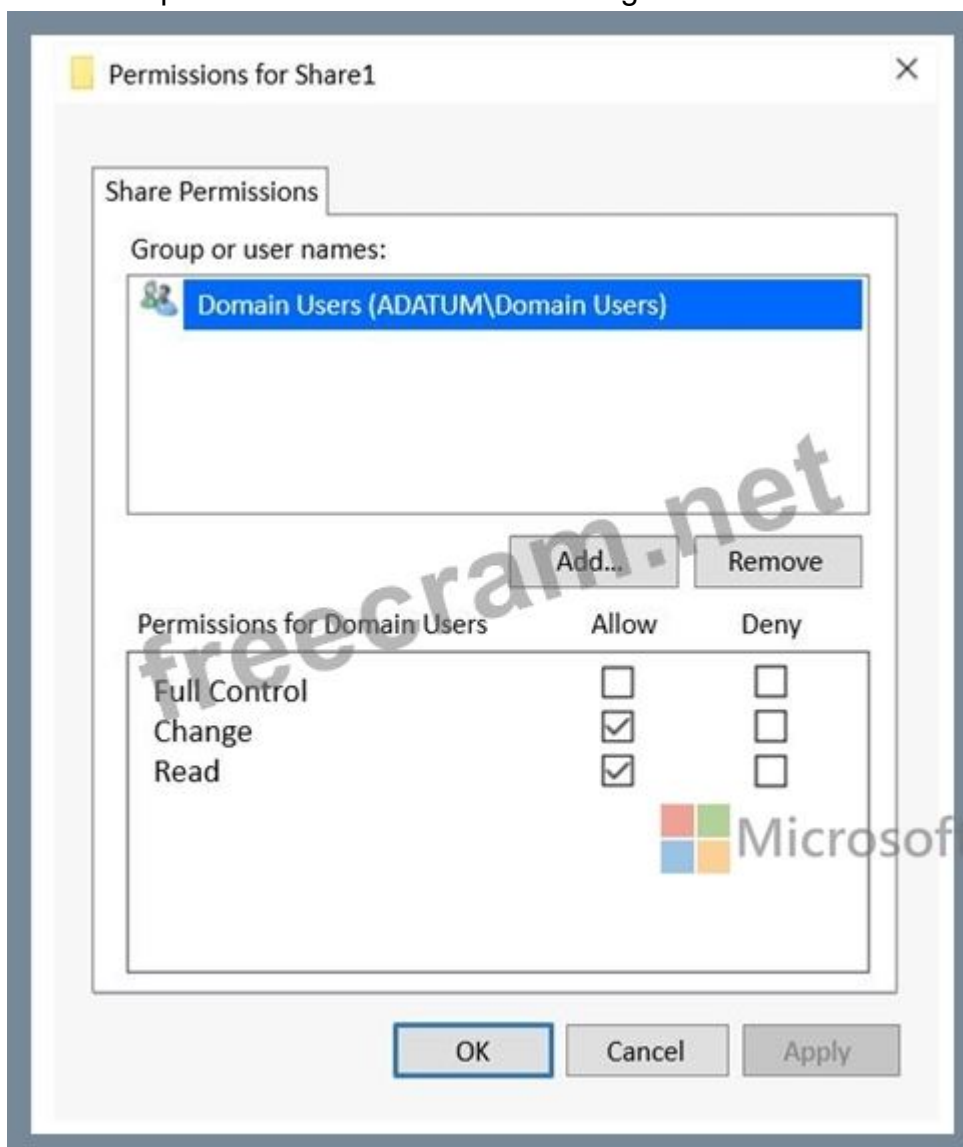
Server1 contains a shared folder named Share1 that has the following configurations:

```

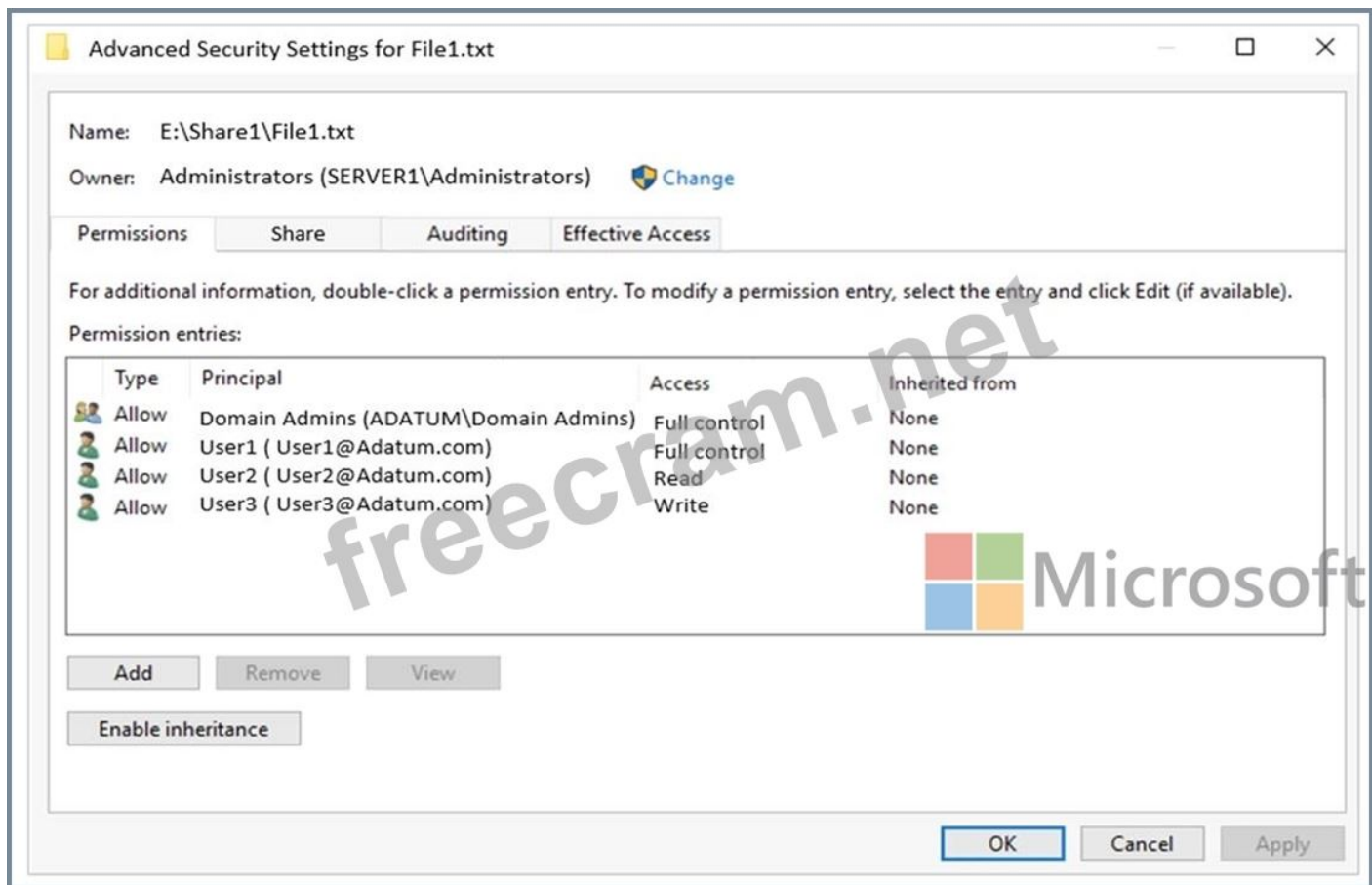
ShareState           : Online
AvailabilityType     : NonClustered
FolderEnumerationMode : AccessBased
CachingMode         : Manual
LeasingMode         : Full
SmbInstance         : Default
CompressData        : False
ContinuouslyAvailable : False
EncryptData         : False
Name                : Share1
Path                : E:\Share1
ShadowCopy          : False

```

The share permissions for Share1 are configured as shown in the Share Permissions exhibit.



Share1 contains a file named File1.txt. The advanced security settings for File1.txt are configured as shown in the File Permissions exhibit.



For each of the following statements, select Yes if the statement is true. Otherwise, select No.
NOTE: Each correct selection is worth one point.

Statements	Yes	No
When User1 connects to \\Server1.adatum.com\Share1\, the user can take ownership of File1.txt.	<input type="radio"/>	<input type="radio"/>
When User2 connects to \\Server1.adatum.com\Share1\, File1.txt is visible.	<input type="radio"/>	<input type="radio"/>
When User3 connects to \\Server1.adatum.com\Share1\, File1.txt is visible.	<input type="radio"/>	<input type="radio"/>

Answer:

Statements	Yes	No
When User1 connects to \\Server1.adatum.com\Share1\, the user can take ownership of File1.txt.	<input type="radio"/>	<input checked="" type="radio"/>
When User2 connects to \\Server1.adatum.com\Share1\, File1.txt is visible.	<input checked="" type="radio"/>	<input type="radio"/>
When User3 connects to \\Server1.adatum.com\Share1\, File1.txt is visible.	<input checked="" type="radio"/>	<input type="radio"/>

NEW QUESTION: 12

You need to implement a name resolution solution that meets the networking requirements. Which two actions should you perform? Each correct answer presents part of the solution.

NOTE: Each correct selection is worth one point

- A. Create an Azure private DNS zone named corp.fabnkam.com.
- B. Create a virtual network link in the coip.fabnkam.com Azure private DNS zone.
- C. Create an Azure DNS zone named corp.fabrikam.com.
- D. Configure the DNS Servers settings for Vnet1.
- E. Enable autoregistration in the corp.fabnkam.com Azure private DNS zone.
- F. On DC3, install the DNS Server role.
- G. Configure a conditional forwarder on DC3.

Answer: ([SHOW ANSWER](#))

Virtual machines in an Azure virtual network receive their DNS configuration from the DNS settings configured on the virtual network. You need to configure the Azure virtual network to use DC3 as the DNS server. Then all virtual machines in the virtual network will use DC3 and their DNS server.

NEW QUESTION: 13

You have an on-premises Active Directory Domain Services (AD DS) domain that syncs with an Azure Active Directory (Azure AD) tenant. You have an on-premises web app named WebApp1 that only supports Kerberos authentication.

You need to ensure that users can access WebApp1 by using their Azure AD account. The solution must minimize administrative effort.

What should you configure? To answer, select the appropriate options in the answer area.

NOTE: Each correct selection is worth one point.

Answer Area

In Azure AD:

- The Azure AD Application Proxy connector
- The Azure AD Application Proxy service
- Web Application Proxy

On-premises:

- The Azure AD Application Proxy connector
- The Azure AD Application Proxy service
- Web Application Proxy

Answer:

Answer Area

In Azure AD:

- The Azure AD Application Proxy connector
- The Azure AD Application Proxy service
- Web Application Proxy

On-premises:

- The Azure AD Application Proxy connector
- The Azure AD Application Proxy service
- Web Application Proxy

Reference:

<https://docs.microsoft.com/en-us/azure/active-directory/app-proxy/application-proxy-add-on-premises-application>

NEW QUESTION: 14

You have an Azure virtual machine named VM1 that runs Windows Server and has the following configurations:

Size: D2s_v4

Operating system disk: 127-GiB standard SSD

Data disk 128-GiB standard SSD

Virtual machine generation: Gen 2

You plan to perform the following changes to VM1:

Change the virtual machine size to D4s_v4.

Detach the data disk.

Add a new standard SSD.

Which changes require downtime for VM1?

A. Detaching the data disk only and adding a new standard SSD.

B. Detaching the data disk only.

C. Changing the virtual machine size only.

D. Adding a new standard SSD only.

Answer: ([SHOW ANSWER](#))

Data disks can be added and detached without requiring downtime. Changing the VM size requires the VM to be restarted.

NEW QUESTION: 15

You have an Azure virtual machine named VM1 that runs Windows Server.

You have an Azure subscription that has Microsoft Defender for Cloud enabled.

You need to ensure that you can use the Azure Policy guest configuration feature to manage VM1.

What should you do?

A. Add the PowerShell Desired State Configuration (DSC) extension to VM1.

B. Configure VM1 to use a user-assigned managed identity.

C. Configure VM1 to use a system-assigned managed identity.

D. Add the Custom Script Extension to VM1.

Answer: ([SHOW ANSWER](#))

Reference:

<https://docs.microsoft.com/en-us/azure/virtual-machines/extensions/guest-configuration>

NEW QUESTION: 16

Your network contains an Active Directory Domain Services (AD DS) domain named conioso.com.

You need to identify which server is the PDC emulator for the domain.

Solution: from Active Directory Users and Computers, you right-click contoso.com in the console tree, and then select Operations Master Does this meet the goal?

A. Yes

B. No

Answer: ([SHOW ANSWER](#))

Valid AZ-800 Dumps shared by ExamDiscuss.com for Helping Passing AZ-800 Exam! ExamDiscuss.com now offer the **newest AZ-800 exam dumps**, the ExamDiscuss.com AZ-800 exam **questions have been updated** and **answers have been corrected** get the **newest** ExamDiscuss.com AZ-800 dumps with Test Engine here:

<https://www.examdumps.com/Microsoft/exam/AZ-800/premium/> (262 Q&As Dumps, **35%OFF**

Special Discount Code: **freecram**)

NEW QUESTION: 17

You need to configure remote administration to meet the security requirements. What should you use?

A. just in time (JIT) VM access

B. Azure AD Privileged Identity Management (PIM)

C. the Remote Desktop extension for Azure Cloud Services

D. an Azure Bastion host

Answer: ([SHOW ANSWER](#))

Reference:

<https://docs.microsoft.com/en-us/azure/defender-for-cloud/just-in-time-access-usage?tabs=jit-config-asc%2Cjit-request-asc>

NEW QUESTION: 18

You have an onpremises DNS server named Server1 that runs Windows Server. Server 1 hosts a DNS zone named fabrikam.com You have an Azure subscription that contains the resources shown in the following table.

Name	Type	Description
Vnet1	Virtual network	Connects to the on-premises network by using a Site-to-Site VPN
VM1	Virtual machine	Runs Windows Server and has the DNS Server role installed
contoso.com	Private DNS zone	Linked to Vnet1
contoso.com	Public DNS zone	Contains the DNS records of all the platform as a service (PaaS) resources

Answer Area

On Vnet1:

- Configure VM1 to forward requests for the contoso.com zone to the public DNS zone.
- Configure Vnet1 to use a custom DNS server that is set to the Azure-provided DNS at 168.63.129.16.
- Configure VM1 to forward requests for the contoso.com zone to the Azure-provided DNS at 168.63.129.16.

On the on-premises network:

- Configure forwarding for the contoso.com zone to VM1.
- Configure forwarding for the contoso.com zone to the public DNS zone.
- Configure forwarding for the contoso.com zone to the Azure-provided DNS at 168.63.129.16.

Answer:

Answer Area

On Vnet1:

- Configure VM1 to forward requests for the contoso.com zone to the public DNS zone.
- Configure Vnet1 to use a custom DNS server that is set to the Azure-provided DNS at 168.63.129.16.
- Configure VM1 to forward requests for the contoso.com zone to the Azure-provided DNS at 168.63.129.16.

On the on-premises network:

- Configure forwarding for the contoso.com zone to VM1.
- Configure forwarding for the contoso.com zone to the public DNS zone.
- Configure forwarding for the contoso.com zone to the Azure-provided DNS at 168.63.129.16.

NEW QUESTION: 19

For each of the following statements, select Yes if the statement is true. Otherwise, select No.

NOTE: Each correct selection is worth one point.

Answer Area

Statements	Yes	No
Admin1 must use a password that has at least 14 characters.	<input type="radio"/>	<input type="radio"/>
User1 must use a password that has at least 10 characters.	<input type="radio"/>	<input type="radio"/>
If Admin1 creates a new local user on Server1, the password for the new user must be at least eight characters.	<input type="radio"/>	<input type="radio"/>

Answer:

Statements	Yes	No
Admin1 must use a password that has at least 14 characters.	<input type="radio"/>	<input checked="" type="radio"/>
User1 must use a password that has at least 10 characters.	<input checked="" type="radio"/>	<input type="radio"/>
If Admin1 creates a new local user on Server1, the password for the new user must be at least eight characters.	<input type="radio"/>	<input checked="" type="radio"/>

NEW QUESTION: 20


You have a server named Server1 that has Windows Admin Center installed. The certificate used by Windows Admin Center was obtained from a certification authority (CA).

The certificate expires.

You need to replace the certificate.

Which three actions should you perform in sequence? To answer, move the appropriate actions from the list of actions to the answer area and arrange them in the correct order.

Actions **Answer Area**

 Microsoft

Copy the certificate thumbprint.

From Internet Information Services (IIS) Manager, bind a certificate.

Rerun **Windows Admin Center Setup** and select **Change**.

Rerun **Windows Admin Center Setup** and select **Repair**.

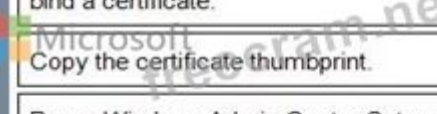
Rerun **Windows Admin Center Setup** and select **Remove**.

>
<

Answer:

Answer Area

From Internet Information Services (IIS) Manager, bind a certificate.

 Microsoft
Copy the certificate thumbprint.

Rerun Windows Admin Center Setup and select Change.

- 1 - From Internet Information Services (IIS) Manager, bind a certificate.
- 2 - Copy the certificate thumbprint.
- 3 - Rerun Windows Admin Center Setup and select Change.

Reference:

<https://www.starwindsoftware.com/blog/change-the-windows-admin-center-certificate>

NEW QUESTION: 21

Your network contains an Active Directory Domain Services (AD DS) forest named contoso.com. The root domain contains the domain controllers shown in the following table.

Name	FSMO role
DC1	Domain naming master
DC2	RID master
DC3	PDC emulator
DC4	Schema master
DC5	Infrastructure master

A failure of which domain controller will prevent you from creating application partitions?

- A. DC1
- B. DC2
- C. DC3
- D. DC4
- E. DC5

Answer: A (LEAVE A REPLY)

Reference:

<https://docs.microsoft.com/en-us/troubleshoot/windows-server/identity/fsmo-roles>

NEW QUESTION: 22

You have an on-premises server named Server1 that runs Windows Server and has internet connectivity.

You have an Azure subscription.

You need to monitor Server1 by using Azure Monitor.

Which resources should you create in the subscription, and what should you install on Server1?

To answer, select the appropriate options in the answer area.

NOTE: Each correct selection is worth one point.

In the subscription, create:

<input type="checkbox"/>	An Azure Files storage account
<input type="checkbox"/>	A Log Analytics workspace
<input type="checkbox"/>	An Azure SQL database and a data collection rule
<input type="checkbox"/>	An Azure Blob Storage account and a data collection rule

On Server1, install:

<input type="checkbox"/>	The Azure Monitor agent
<input type="checkbox"/>	The Analytics gateway
<input type="checkbox"/>	The Device Health Attestation server role

Answer:

In the subscription, create:

An Azure Files storage account
A Log Analytics workspace
An Azure SQL database and a data collection rule
An Azure Blob Storage account and a data collection rule

On Server1, install:

The Azure Monitor agent
The Analytics gateway
The Device Health Attestation server role

Reference:

<https://docs.microsoft.com/en-us/windows-server/manage/windows-admin-center/azure/azure-monitor>

NEW QUESTION: 23

You have an Azure virtual machine named VM1 that runs Windows Server. You perform the following actions on VM1:

- * Create a folder named Folder1 on volume C
- * Create a folder named Folder2 on volume D.
- * Add a new data disk to VM1 and create a new volume that is assigned drive letter E.
- * Install an app named App1 on volume E.

You plan to resize VM1.

Which objects will present after you resize VM1 ?

- A. Folder1 only
- B. Folder1, Folder2, App1, and volume E
- C. Folder1 and Folder2 only
- D. Folder1, volume E, and App1 only

Answer: ([SHOW ANSWER](#))

NEW QUESTION: 24

You have an on-premises Active Directory Domain Services (AD DS) domain that syncs with an Azure Active Directory (Azure AD) tenant. You plan to deploy 100 new Azure virtual machines that will run Windows Server. You need to ensure that each new virtual machine is joined to the AD DS domain. What should you use?

- A. Azure AD Connect
- B. a Group Policy Object (GPO)
- C. an Azure Resource Manager (ARM) template
- D. an Azure management group

Answer: ([SHOW ANSWER](#))

Reference:

<https://www.ludovicmedard.com/create-an-arm-template-of-a-virtual-machine-automatically-joined-to-a-domain/>

NEW QUESTION: 25

You need to sync files from an on-premises server named Server1 to Azure by using Azure File Sync. You have a cloud tiering policy that is configured for 30 percent free space and 70 days. Volume f on Server1 is 500 GB.

A year ago, you configured E:\Oata on Server1 to sync by using Azure File Sync. The files that are visible in E:\Data are shown in the following table.

Name	Size	Last accessed
File1	200 GB	2 days ago
File2	100 GB	10 days ago
File3	200 GB	60 days ago
File4	50 GB	100 days ago

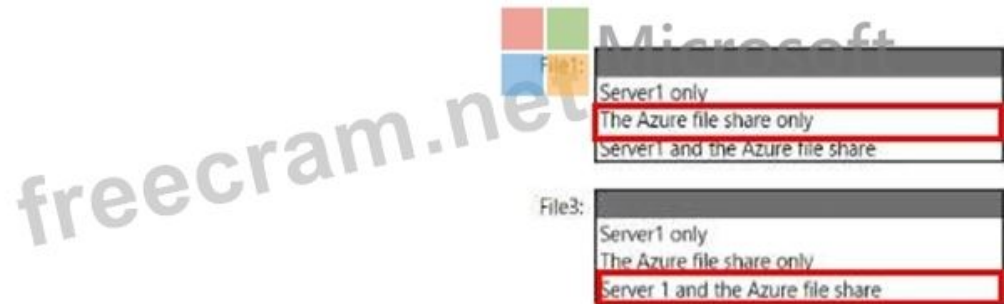
Volume E does NOT contain any other files.

Where are File1 and file3 located? To answer, select the appropriate options in the answer area.



Answer:

Answer Area



NEW QUESTION: 26

You are planning the implementation Azure Arc to support the planned changes. You need to configure the environment to support configuration management policies. What should you do?

- A. Hybrid Azure AD join all the servers.
- B. Create a hybrid runbook worker in Azure Automation.
- C. Deploy the Azure Connected Machine agent to all the servers.
- D. Deploy the Azure Monitor agent to all the servers.

Answer: C (LEAVE A REPLY)

Reference:

<https://docs.microsoft.com/en-us/azure/azure-arc/servers/plan-at-scale-deployment>

NEW QUESTION: 27

You create a new Azure subscription.

You plan to deploy Azure Active Directory Domain Services (Azure AD DS) and Azure virtual machines. The virtual machines will be joined to Azure AD DS.

You need to deploy Active Directory Domain Services (AD DS) to ensure that the virtual machines can be deployed and joined to Azure AD DS.

Which three actions should you perform in sequence? To answer, move the appropriate actions from the list of actions to the answer area and arrange them in the correct order.

Actions



Modify the settings of the Azure virtual network.

Install the Active Directory Domain Services role.

Install Azure AD Connect.

Create an Azure virtual network.

Create an Azure AD DS instance.

Run the Active Directory Domain Service installation Wizard.



Answer:

Answer Area

- Create an Azure virtual network.
- Create an Azure AD DS instance.
- Modify the settings of the Azure virtual network.

- 1 - Create an Azure virtual network.
- 2 - Create an Azure AD DS instance.
- 3 - Modify the settings of the Azure virtual network.

Reference:

<https://docs.microsoft.com/en-us/azure/active-directory-domain-services/tutorial-create-instance>

NEW QUESTION: 28

Your network contains a Active Directory Domain Service (AD DS) forest named contoso.com. The forest root domain contains a server named server1. contoso.com.

A two-way forest trust exists between the contoso.com forest and an AD DS forest named fabrikam.com. The fabrikam.com forest contains 10 child domains.

You need to ensure that only the members of a group named fabrikam\Group1 can authenticate to server1.contoso.com.

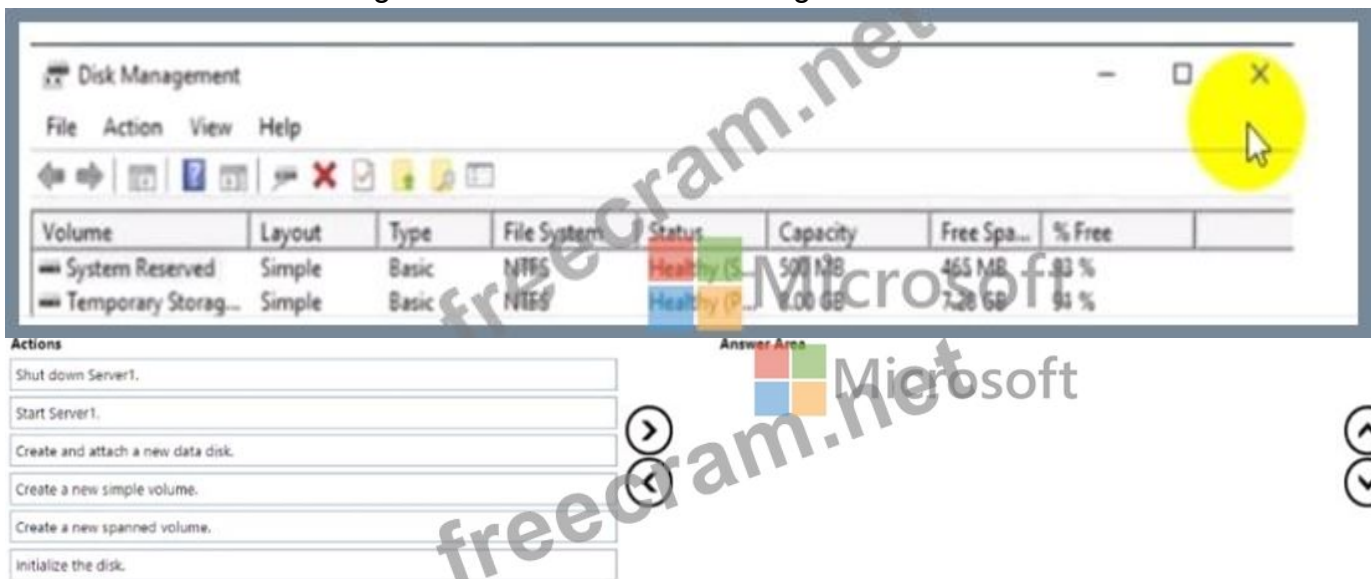
What should you do first?

- A. Enable Selective authentication for the trust.
- B. Add fabrikam\Group1 to the local Users group on server1.contoso.com.
- C. Change the trust to a one-way external trust.
- D. Enable SID filtering for the trust.

Answer: ([SHOW ANSWER](#))

NEW QUESTION: 29

You create an Azure virtual machine named Server1 that runs Windows Server. Server1 has the disk configuration shown in the following exhibit.



Answer:



- 1 - Start Server1.
- 2 - Create and attach a new data disk.
- 3 - Shut down Server1.

NEW QUESTION: 30

You have on-premises file servers that run Windows Server as shown in the following table.

Name	Relevant folder
Server1	D:\Folder1, E:\Folder2
Server2	D:\Data

You have the Azure file shares shown in the following table.

Name	Location
share1	East US
share2	East US

You add a Storage Sync Service named Sync1 and an Azure File Sync sync group named Group1. Group1 uses share1 as a cloud endpoint.

You register Server1 and Server2 with Sync1. You add D:\Folder1 from Server1 as a server endpoint in Group1.

For each of the following statements, select Yes if the statement is true. Otherwise, select No.

NOTE: Each correct selection is worth one point.

Statements

Yes **No**

You can add share2 as a cloud endpoint in Group1.

You can add E:\Folder2 from Server1 as a server endpoint in Group1.

You can add D:\Data from Server2 as a server endpoint in Group1.

Answer:

Statements

Yes **No**

You can add share2 as a cloud endpoint in Group1.

You can add E:\Folder2 from Server1 as a server endpoint in Group1.

You can add D:\Data from Server2 as a server endpoint in Group1.

Reference:

<https://docs.microsoft.com/en-us/azure/storage/file-sync/file-sync-planning>

NEW QUESTION: 31

You have an on-premises Active Directory Domain Services (AD DS) domain that syncs with an Azure Active Directory (Azure AD) tenant. The on-premises network is connected to Azure by using a Site-to-Site VPN. You have the DNS zones shown in the following table.

Name	Location	Description
contoso.com	A domain controller named DC1 on the on-premises network	Provides name resolution on-premises
fabrikam.com	An Azure private DNS zone	Provides name resolution for all Azure virtual networks

You need to ensure that names from (aDiifcam.com can be resolved from the on-premises network Which two actions should you perform? Each correct answer presents part of the solution, NOTE: Each correct selection Is worth one point

- A. Create a conditional forwarder for fabrikam.com on DC1.
- B. Create a stub zone for fabrikam.com on DC1.
- C. Create a secondary zone for fabnlcam.com on DO.
- D. Deploy an Azure virtual machine that runs Windows Server. Modify the DNS Servers settings for the virtual network.
- E. Deploy an Azure virtual machine that runs Windows Server. Configure the virtual machine & a DNS forwarder.

Answer: (SHOW ANSWER)

Reference:

<https://docs.microsoft.com/en-us/azure/private-link/private-endpoint-dns#on-premises-workloads-using-a-dns-forwarder>

Valid AZ-800 Dumps shared by ExamDiscuss.com for Helping Passing AZ-800 Exam! ExamDiscuss.com now offer the **newest AZ-800 exam dumps**, the ExamDiscuss.com AZ-800 exam **questions have been updated** and **answers have been corrected** get the **newest** ExamDiscuss.com AZ-800 dumps with Test Engine here:

<https://www.examdumps.com/Microsoft/exam/AZ-800/premium/> (262 Q&As Dumps, **35%OFF**

Special Discount Code: freecram)

NEW QUESTION: 32

You have a Windows Server container host named Server 1 and a container image named Image1.

You need to start a container from image1. The solution must run the container on a Hyper-V virtual machine.

Which parameter should you specify when you run the docker run command?

- A. --expose
- B. --privileged
- C. --runtime
- D. --entrypoint
- E. --isolation

Answer: (SHOW ANSWER)

Reference:

<https://docs.microsoft.com/en-us/virtualization/windowscontainers/manage-containers/hyperv-container>

NEW QUESTION: 33

You need to meet the technical requirements for Server1. Which users can currently perform the required tasks?

- A. Admin1 only
- B. Admin3 only
- C. Admin1 and Admin3 only
- D. Admin1 Admin2. and Admm3

Answer: C (LEAVE A REPLY)

* On VM3, ensure that Data Deduplication on all volumes is possible.

NEW QUESTION: 34

You have 10 on-premises servers that run Windows Server.

You plan to use Azure Network Adapter to connect the servers to the resources in Azure.

Which prerequisites do you require on-premises and in Azure? To answer, select the appropriate options in the answer area.

NOTE: Each correct selection is worth one point.

To configure the on-premises servers, use:	<table border="1"><tr><td><input type="checkbox"/></td><td>Azure CLI</td></tr><tr><td><input type="checkbox"/></td><td>Routing and Remote Access</td></tr><tr><td><input type="checkbox"/></td><td>Server Manager</td></tr><tr><td><input type="checkbox"/></td><td>Windows Admin Center</td></tr></table>	<input type="checkbox"/>	Azure CLI	<input type="checkbox"/>	Routing and Remote Access	<input type="checkbox"/>	Server Manager	<input type="checkbox"/>	Windows Admin Center		
<input type="checkbox"/>	Azure CLI										
<input type="checkbox"/>	Routing and Remote Access										
<input type="checkbox"/>	Server Manager										
<input type="checkbox"/>	Windows Admin Center										
To connect the Azure resources and Azure Network Server Manager Adapter, use:	<table border="1"><tr><td><input type="checkbox"/></td><td>Azure Bastion</td></tr><tr><td><input type="checkbox"/></td><td>Azure Firewall</td></tr><tr><td><input type="checkbox"/></td><td>An Azure virtual network gateway</td></tr><tr><td><input type="checkbox"/></td><td>A private endpoint</td></tr><tr><td><input type="checkbox"/></td><td>A public Azure Load Balancer</td></tr></table>	<input type="checkbox"/>	Azure Bastion	<input type="checkbox"/>	Azure Firewall	<input type="checkbox"/>	An Azure virtual network gateway	<input type="checkbox"/>	A private endpoint	<input type="checkbox"/>	A public Azure Load Balancer
<input type="checkbox"/>	Azure Bastion										
<input type="checkbox"/>	Azure Firewall										
<input type="checkbox"/>	An Azure virtual network gateway										
<input type="checkbox"/>	A private endpoint										
<input type="checkbox"/>	A public Azure Load Balancer										


Answer:

To configure the on-premises servers, use:

Azure CLI
Routing and Remote Access
Server Manager
Windows Admin Center

To connect the Azure resources and Azure Network Server Manager Adapter, use:

Azure Bastion
Azure Firewall
An Azure virtual network gateway
A private endpoint
A public Azure Load Balancer



Reference:

<https://docs.microsoft.com/en-us/windows-server/manage/windows-admin-center/azure/use-azure-network-adapter>

NEW QUESTION: 35

Your network contains two VLANs for client computers and one VLAN for a datacenter. Each VLAN is assigned an IPv4 subnet. Currently, all the client computers use static IP addresses. You plan to deploy a DHCP server to the VLAN in the datacenter.

You need to use the DHCP server to provide IP configurations to all the client computers.

What is the minimum number of scopes and DHCP relays you should create? To answer, select the appropriate options in the answer area.

NOTE: Each correct selection is worth one point.

Answer Area



DHCP scopes:

1
2
3
4

DHCP relays:

1
2
3
4

the selections for DHCP relays:

Answer:

Answer Area

DHCP scopes:

1
2
3
4

DHCP relays:

1
2
3
4

the selections for DHCP relays:



NEW QUESTION: 36

Your network contains an Active Directory Domain Services (AD DS) domain.

You have a Group Policy Object (GPO) named GPO1 that contains Group Policy preferences.

You plan to link GPO1 to the domain.

You need to ensure that the preference in GPO1 apply only to domain member servers and NOT to domain controllers or client computers. All the other Group Policy settings in GPO1 must apply to all the computers. The solution must minimize administrative effort.

Which type of item level targeting should you use?

- A. Domain
- B. Operating System
- C. Security Group
- D. Environment Variable

Answer: (SHOW ANSWER)

Reference:

[https://docs.microsoft.com/en-us/previous-versions/windows/it-pro/windows-server-2012-r2-and-2012/dn789189\(v=ws.11\)#operating-system-targeting](https://docs.microsoft.com/en-us/previous-versions/windows/it-pro/windows-server-2012-r2-and-2012/dn789189(v=ws.11)#operating-system-targeting)

NEW QUESTION: 37

You have a Windows Server container host named Server1 and an Azure subscription.

You deploy an Azure container registry named Registry1 to the subscription.

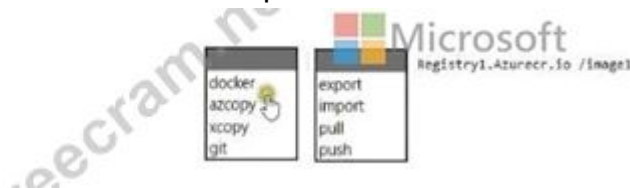
On Server1, you create a container image named image1.

You need to store imager in Registry1.

Which command should you run on Server1 ? To answer, select the appropriate options in the answer area.

NOTE: Each correct selection is worth one point.

Answer Area



Answer:

Answer Area



Reference:

<https://docs.microsoft.com/en-us/azure/container-registry/container-registry-get-started-docker-cli?tabs=azure-cli#push-the-image-to-your-registry>

NEW QUESTION: 38

You have an on-premises network that is connected to an Azure virtual network by using a Site-to-Site VPN. Each network contains a subnet that has the same IP address space. The on-premises subnet contains a virtual machine.

You plan to migrate the virtual machine to the Azure subnet.

You need to migrate the on premises virtual machine to Azure without modifying the IP address.

The solution must minim administrative effort.

What should you implement before you perform the migration?

- A. Azure Extended Network
- B. Azure Virtual Network NAT
- C. Azure Application Gateway
- D. Azure virtual network peering

Answer: ([SHOW ANSWER](#)**)**

Reference:

<https://docs.microsoft.com/en-us/windows-server/manage/windows-admin-center/azure/azure-extended-network>

Valid AZ-800 Dumps shared by ExamDiscuss.com for Helping Passing AZ-800 Exam!
ExamDiscuss.com now offer the **newest AZ-800 exam dumps**, the ExamDiscuss.com AZ-800 exam **questions have been updated** and **answers have been corrected** get the **newest** ExamDiscuss.com AZ-800 dumps with Test Engine here:

<https://www.examd Discuss.com/Microsoft/exam/AZ-800/premium/> (262 Q&As Dumps, **35%OFF**

Special Discount Code: freecram)