

## Cisco.400-007.v2026-06-03.q221

Exam Code:	400-007
Exam Name:	Cisco Certified Design Expert (CCDE) Written Exam
Certification Provider:	Cisco
Free Question Number:	221
Version:	v2026-06-03
# of views:	110
# of Questions views:	2413
<a href="https://www.freecram.net/torrent/Cisco.400-007.v2026-06-03.q221.html">https://www.freecram.net/torrent/Cisco.400-007.v2026-06-03.q221.html</a>	

### NEW QUESTION: 1

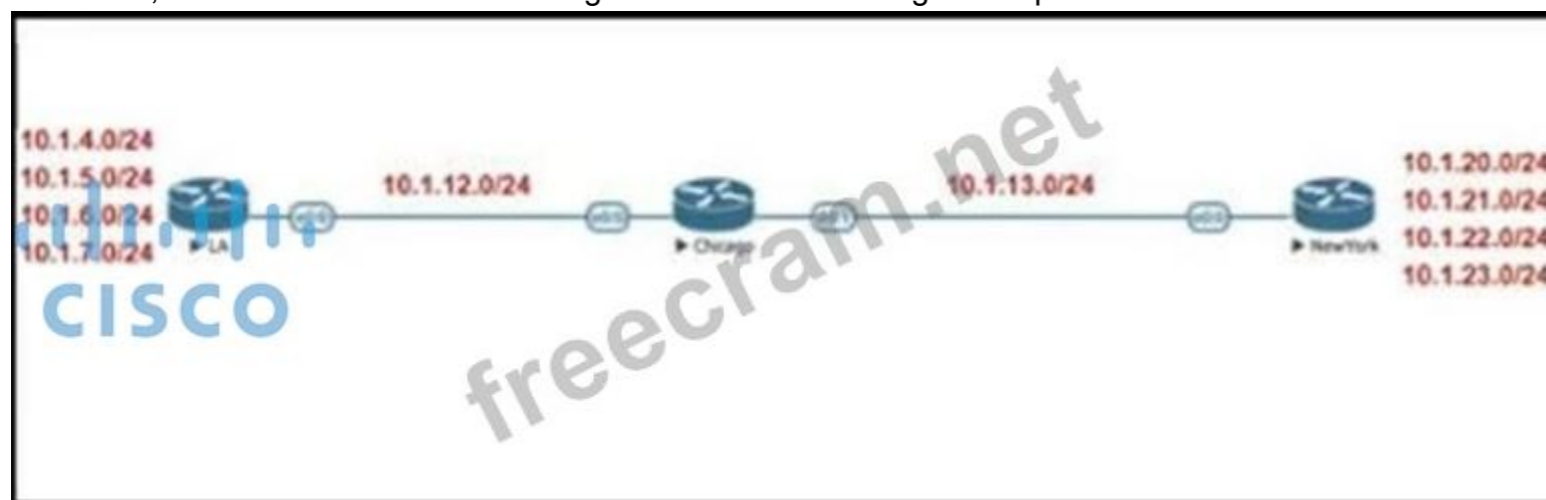
Hybrid cloud computing allows organizations to take advantage of public and private cloud models. Which best practice should organizations follow to ensure data security in the private cloud?

- A. Encrypt data when it is at rest and in motion
- B. Use standard protocols for data transmission over the network
- C. Communicate all data security risks to customers and end users
- D. Use standard network protocols for data communication between unsecured network connections

Answer: A ([LEAVE A REPLY](#))

### NEW QUESTION: 2

Refer to the exhibit. Company XYZ BGP topology is as shown in the diagram. The interface on the LA router connected toward the 10.1.5.0/24 network is faulty and is going up and down, which affects the entire routing domain. Which routing technique can the network administrator use so that the rest of the network is not affected by the flapping issue?



- A. The LA administrator should use route dampening for the 10.1.5.0/24 network so that it does not get propagated when it flaps up and down.
- B. The LA administrator should use route aggregation to summarize the 10.1.4.0/24, 10.1.5.0/24, 10.1.6.0/24, and 10.1.7.0/24 networks toward Chicago.
- C. The LA administrator should use route filtering to block the 10.1.5.0/24 network from getting propagated toward Chicago and New York.
- D. The Chicago administrator should use route filtering to block the 10.1.5.0/24 network from coming in from the LA router.

**Answer:** ([SHOW ANSWER](#))

**NEW QUESTION: 3**

What best describes the difference between Automation and Orchestration?

- A. Automation refers to an automatic process for completing multiple tasks with conditions and Orchestration refers to executing tasks in parallel.
- B. Automation refers to scripting languages (Python, Ansible etc.) and Orchestration refers to commercial products that control configuration deployment
- C. Automation refers to an automatic process for completing a single task and Orchestration refers to assembling and coordinating a set of tasks and conditions.
- D. Automation describes a hands-off configuration process while Orchestration refers to sets of automation tasks that require the network administrator to coordinate

**Answer:** ([SHOW ANSWER](#))

**NEW QUESTION: 4**

The API of an SDN controller named CTL-A uses the HTTP POST method and the same URL for all resources. The JSON body of each message used to get information for specific resources and operations. The API of a SDN controller named CTL-B uses HTTP CRUD methods and a uniform interface with different URLs for each resource. Which API type is used by each SDN controller?

- A. CTL-B uses a RESTful API and CTL-A has an HTTP-based API
- B. CTL-A uses a RESTful API and CTL-B has an HTTP-based API
- C. CTL-A and CTL-B have a RESTful API
- D. CTL-A and CTL-B have a non-RESTful API

**Answer:** ([SHOW ANSWER](#))

CTL-B uses HTTP CRUD methods (GET, POST, PUT, DELETE) and different URLs for each resource, which aligns with the core principles of RESTful APIs. RESTful APIs use a uniform interface with unique resource identifiers (URLs) and standard HTTP methods to manipulate resources.

CTL-A uses only the HTTP POST method and the same URL for all operations, with the JSON body specifying the resource and operation. This is not RESTful because it does not use the uniform interface or HTTP methods to represent different actions on resources. Instead, it uses HTTP as a transport protocol for RPC-style calls or an HTTP-based API that is not RESTful.

**NEW QUESTION: 5**

Customer XYZ network consists of an MPLS core. IS-IS running as IGP, a pair of BGP route reflectors for route propagation, and a few dozens of MPLS-TE tunnels for specific tactical traffic engineering requirements. The customer's engineering department has some questions about the use of the Overload Bit in the IS-IS networks and how it could be used to improve their current network design. Which two concepts about the Overload Bit are true? (Choose two.)

- A. It forces the midpoint MPLS-TE node to reoptimize the primary tunnels going through the OL node.
- B. Networks advertised within the LSPs of the respective node will become unreachable
- C. It can be set on a router until other interacting protocols have signaled convergence.
- D. It is not recommended on BGP Route Reflectors
- E. It can be set on a router during the startup process for a fixed period of time

**Answer:** ([SHOW ANSWER](#))

**NEW QUESTION: 6**

Which design benefit of PortFast is true?

- A. PortFast detects one-way communications on the physical port, which prevents switch loops
- B. PortFast does not generate a spanning tree topology change when a station on a port is connected or disconnected
- C. PortFast disables spanning tree on the port, which puts the port into the forwarding state immediately after it is connected

- D. PortFast prevents switch loops that are caused by a unidirectional point to point link condition on Rapid PVST+ and MST
- E. PortFast allows small, unmanaged switches to be plugged into ports of access switches without risking switch loops
- F. PortFast prevents switched traffic from traversing suboptimal paths on the network

**Answer:** ([SHOW ANSWER](#))

**NEW QUESTION: 7**

You want to mitigate failures that are caused by STP loops that occur before UDLD detects the failure or that are caused by a device that is no longer sending BPDUs. Which mechanism do you use along with UDLD?

- A. Root guard
- B. Loop guard
- C. BPDU guard
- D. BPDU filtering

**Answer:** ([SHOW ANSWER](#))

**NEW QUESTION: 8**

A customer has a functional requirement that states HR systems within a data center should be segmented from other systems that reside in the same data center and same VLAN. The systems run legacy applications by using hard-coded IP addresses with all HR systems dedicated to .129 to .254 of the 10.20.20.0/24 prefix. Which segmentation method is optimal for the customer?

- A. VACLs on data center switches
- B. ACLs on data center switches
- C. routed firewalls
- D. data center perimeter firewalling

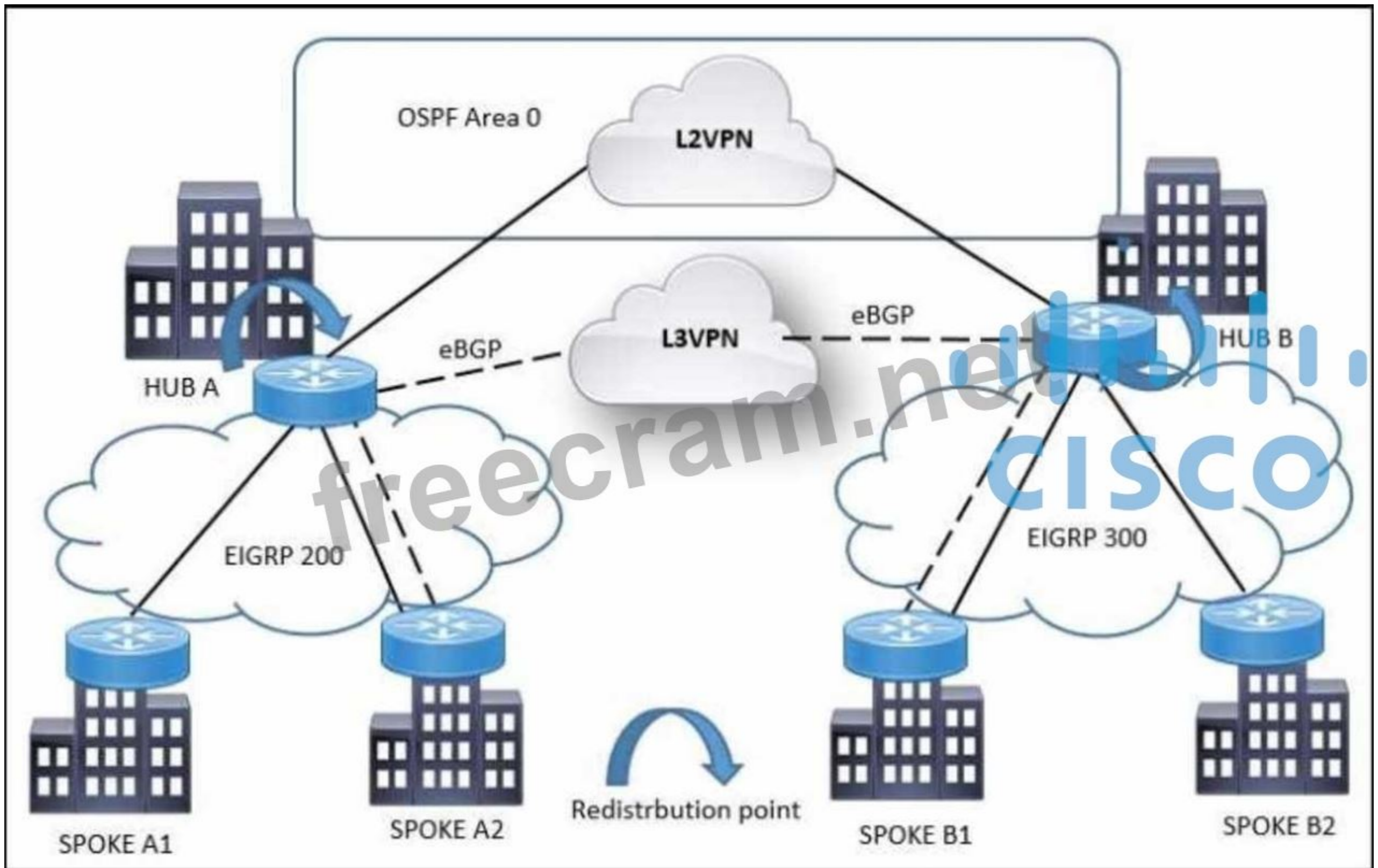
**Answer:** ([SHOW ANSWER](#))

**NEW QUESTION: 9**

Refer to the exhibit A customer network design team is planning a migration from a legacy TDM- based L2VPN to an MPLS-based L3VPN Migration is planned in a phased approach:

- OSPF backbone Link between HUB A and HUB B sites to be migrated to eBGP
- Spoke A2 and Spoke B1 will be migrated to the L3VPN

Which solution design can be considered to avoid routing loops during backbone link migration?



- A. Advertise low AD value for transit traffic on hub sites.
- B. Redistribute EIGRP 200 and 300 with low cost into BGP
- C. OSPF backbone area advertises summarized routes to hub.
- D. Enable route-filtering on OSPF backbone routers for spoke traffic

Answer: ([SHOW ANSWER](#))

NEW QUESTION: 10

Refer to the exhibit. The WAN network of the General Bank of Greece has experienced several outages. It takes too long to activate a new branch site. The networking department of the bank plans to upgrade the legacy end-of-life WAN network with a new flexible, manageable, and scalable in-house solution. The number of branches will increase exponentially in the next fiscal year. The CTO states that the bank's main goal is OPEX reduction. The network engineering team prepares a table to evaluate the available options. Which WAN technology can be used for the solution?

	Equipment Cost	ISP Cost	Licenses Cost
SD-WAN over L3VPN	\$\$	\$\$	\$\$\$
SD-WAN over L2VPN	\$\$	\$	\$\$\$
Managed SD-WAN	\$	\$\$\$	-
DMVPN over L3VPN	\$\$	\$\$	\$

- A. Managed SD-WAN
- B. SD-WAN over L2VPN
- C. DMVPN over L3VPN
- D. SD-WAN over L3VPN

Answer: **C** ([LEAVE A REPLY](#))

#### NEW QUESTION: 11

You have been asked to design a high-density wireless network for a university campus. Which two principles would you apply in order to maximize the wireless network capacity? (Choose two.)

- A. Choose a high minimum data rate to reduce the duty cycle.
- B. increases the number of SSIDs to load-balance the client traffic.
- C. Enable 802.11n channel bonding on both 2.4 GHz and 5 GHz to increase the maximum aggregated cell throughput.
- D. Implement a four-channel design on 2.4 GHz to increase the number of available channels
- E. Make use of the 5-GHz band to reduce the spectrum utilization on 2.4 GHz when dual-band clients are used.

Answer: ([SHOW ANSWER](#))

#### NEW QUESTION: 12

You have been tasked with designing a data center interconnect as part of business continuity. You want to use FCoE over this DCI to support synchronous replication. Which two technologies allow for FCoE via lossless Ethernet or data center bridging? (Choose two.)

- A. VPLS
- B. EoMPLS
- C. Multichassis EtherChannel over Pseudowire
- D. SONET/SDH
- E. DWDM

Answer: ([SHOW ANSWER](#))

#### NEW QUESTION: 13

Your company utilizes many different types of network transports and you want to increase the efficiency of the network. Which solution can be used to improve network efficiency over PPPoE, IPsec, and GRE networks'?

- A. Host Discovery Protocol

- B. IRDP
- C. OATM
- D. PMTUD

**Answer: D** ([LEAVE A REPLY](#))

#### **NEW QUESTION: 14**

Which solution component helps to achieve comprehensive threat protection and compliance for migration to multicloud SDX architectures?

- A. system-oriented architecture
- B. platform-oriented architecture
- C. OSASE architecture
- D. SASE architecture

**Answer: (**[SHOW ANSWER](#)**)**

#### **NEW QUESTION: 15**

In a distributed cloud-native environment, calls to services and cloud resources can fail caused by unanticipated events that will require longer periods of time to resolve. These faults can range in severity from a partial loss of connectivity to the complete failure of a service. In these situations, it's pointless for an application to continually retry an operation that is unlikely to succeed.

Which pattern can prevent an application from repeatedly trying to execute an operation that's likely to fail?

- A. circuit breaker
- B. fallback
- C. bulkhead
- D. timeout

**Answer: (**[SHOW ANSWER](#)**)**

The circuit breaker pattern prevents an application from repeatedly attempting operations that are likely to fail by "opening" after repeated failures. This stops continuous retries until the service recovers, improving resilience in distributed cloud-native environments.

#### **NEW QUESTION: 16**

What are two advantages of controller-based networks versus traditional networks? (Choose two.)

- A. more flexible configuration per device
- B. the ability to have forwarding tables at each device
- C. more consistent device configuration
- D. the ability to configure the features for the network rather than per device
- E. programmatic APIs that are available per device

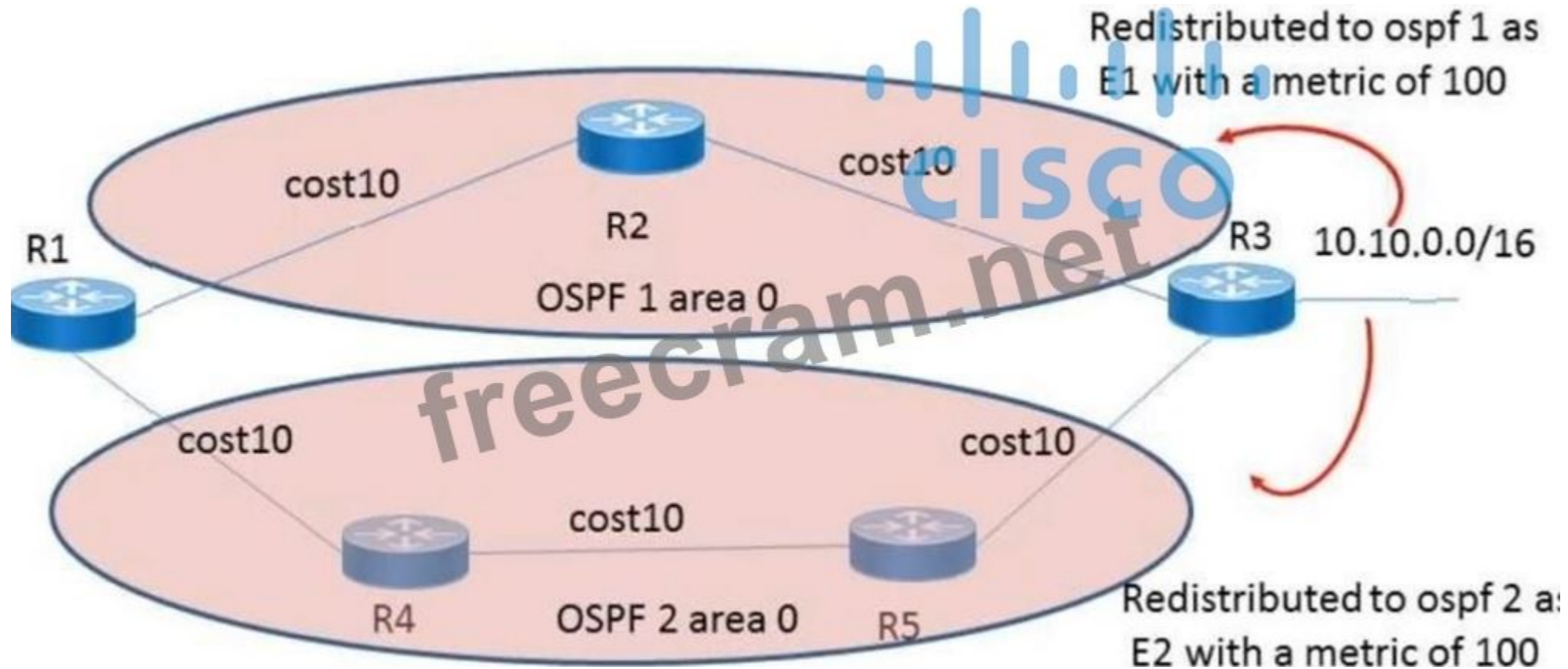
**Answer: (**[SHOW ANSWER](#)**)**

**Valid 400-007 Dumps** shared by EduDump.com for Helping Passing 400-007 Exam! EduDump.com now offer the **newest 400-007 exam dumps**, the EduDump.com 400-007 exam **questions have been updated** and **answers have been corrected** get the **newest** EduDump.com 400-007 dumps with Test Engine here:

<https://www.edudump.com/exams/Cisco/400-007/premium/> (550 Q&As Dumps, **35%OFF** Special Discount Code: **freecram**)

**NEW QUESTION: 17**

Refer to the exhibit. The network 10.10.0.0/16 has been redistributed to OSPF processes and the best path to the destination from R1 has been chosen as R1-R2-R3. A failure occurred on the link between R2 and R3, and the path was changed to R1-R4-R5-R3. What happens when the link between R2 and R3 is restored?



- A. The path R1-R4-R5-R3 continues to be the best path because the metric is better.
- B. The path reverts to R1-R2-R3 because this was the previous best path.
- C. The path reverts back to R1-R2-R3 because the route type is E1.
- D. The path R1-R4-R5-R3 continues to be the best path because OSPF does not compare the metrics between two domains.

Answer: ([SHOW ANSWER](#))

**NEW QUESTION: 18**

You are leading design discussions about IPv6 implementation into an existing Enterprise network. A question is raised regarding older Layer 2 switches that exist in the network, and if any changes are required to these switches for successful IPv6 implementation. Which two responses do you give? (Choose two.)

- A. If IPv6 multicast deployment is planned, then make sure that Layer 2 switches support MLD snooping at Layer 2 switches
- B. If IPv6 anycast deployment is planned, then make sure that Layer 2 switches support ICMPv6 snooping at Layer 2 switches
- C. If IPv6 anycast deployment is planned, then make sure that Layer 2 switches support DHCPv6 snooping at Layer 2 switches
- D. If IPv6 anycast deployment is planned then make sure that Layer 2 switches support NO snooping at Layer 2 switches
- E. IPv6 is transparent on Layer 2 switches so no changes are needed to the Layer 2 switches

Answer: ([SHOW ANSWER](#))

**NEW QUESTION: 19**

Company XYZ was not satisfied with the reconvergence time OSPF is taking. BFD was implemented to try to reduce the reconvergence time, but the network is still experiencing delays when having to reconverge. Which technology will improve the design?

- A. Change the OSPF hello and dead intervals

- B. Change the protocol to BGP
- C. BFDecho
- D. OSPF fast hellos

Answer: ([SHOW ANSWER](#))

**NEW QUESTION: 20**

Which two factors must be considered while calculating the RTO? (Choose two )

- A. steps needed to mitigate or recover from a disaster
- B. maximum tolerable amount of data loss that the organization can sustain
- C. how often backups are taken and how quickly these can be restored
- D. importance and priority of individual systems
- E. cost of lost data and operations

Answer: ([SHOW ANSWER](#))

**NEW QUESTION: 21**

Drag and Drop Question

Drag and drop the end-to-end network virtualization elements from the left onto the correct network areas on the right.

Network Functions Virtualization (NFV)

IP Tunneling

VRF

MPLS + MP-BGP

VLAN

Service Containers

Edge Control

option A

option B

Transport Virtualization

option A

option B

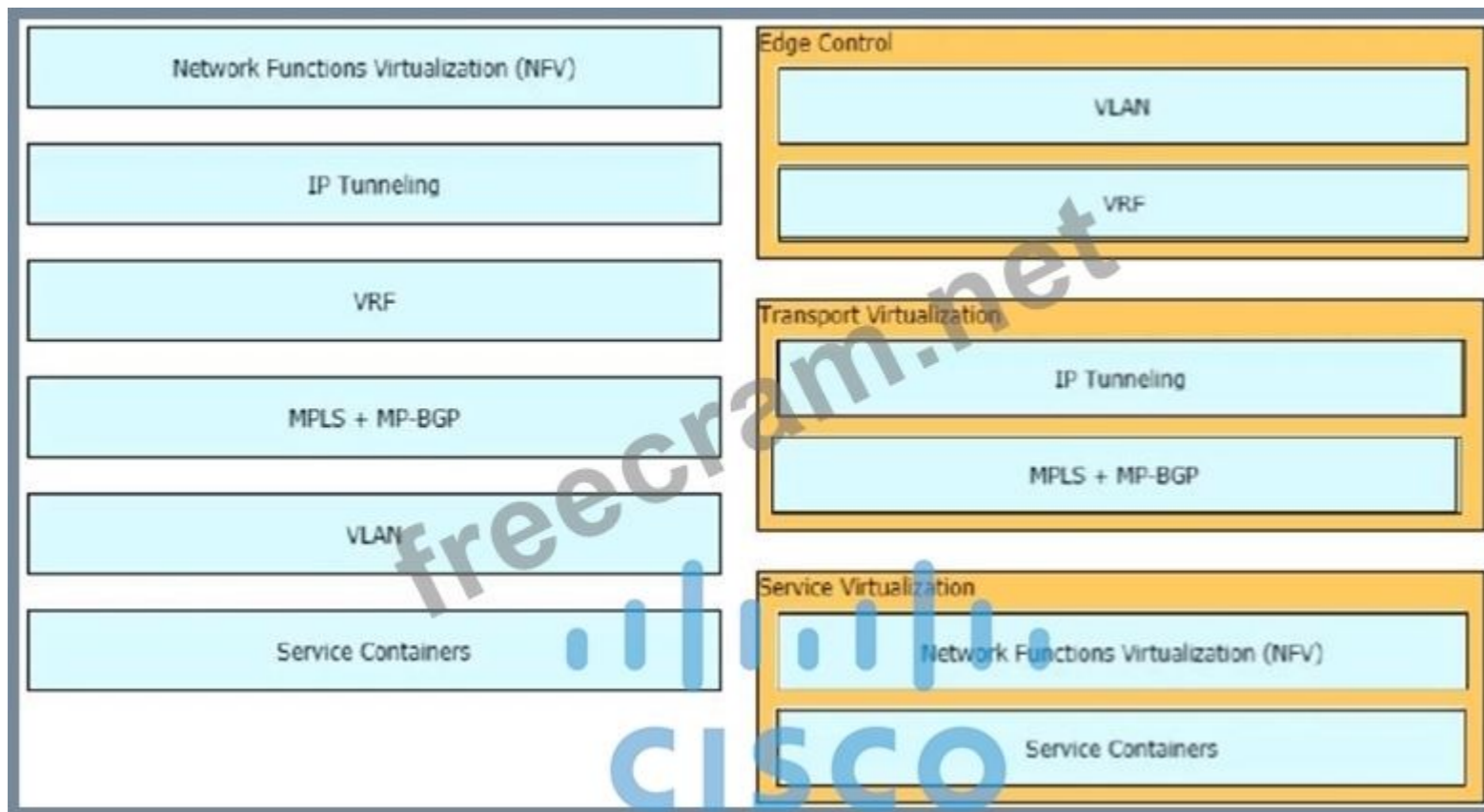
Service Virtualization

option A

option B

CISCO

Answer:



**NEW QUESTION: 22**

What is a country-specific requirement that data is subject to the laws of the country in which it is collected or processed and must remain within its borders?

- A. data sovereignty
- B. data inheritance
- C. data rationality
- D. data replication

Answer: ([SHOW ANSWER](#))

**NEW QUESTION: 23**

When an SDN-based model is used to transmit multimedia traffic, which aspect should an architect consider while designing the network?

- A. security
- B. traffic patterns
- C. flow forwarding
- D. QoE estimation

Answer: ([SHOW ANSWER](#))

**NEW QUESTION: 24**

An architect receives a business requirement from a CTO that states the RTO and RPO for a new system should be as close as possible to zero.

Which replication method and data center technology should be used?

- A. asynchronous replication over dual data centers via DWDM
- B. synchronous replication over geographically dispersed dual data centers via MPLS
- C. synchronous replication over dual data centers via Metro Ethernet

D. asynchronous replication over geographically dispersed dual data centers via CWDM

**Answer:** ([SHOW ANSWER](#))

Metro Ethernet is a high-speed, low-latency network technology that enables synchronous replication between data centers that are relatively close geographically, minimising the impact of latency on system performance and helping to maintain a low RTO.

**NEW QUESTION: 25**

Company XYZ wants to implement an IPS device to detect and block well-known attacks against their network. They want a design solution where all packets that are forwarded to the network are checked against a signature database before being allowed through. This check must be done with the minimum effect on performance. Which design is recommended?

- A. Deploy an IPS behind the firewall in promiscuous mode
- B. Deploy an IPS in front of the firewall in promiscuous mode
- C. Deploy an IPS in front of the firewall in in-line mode
- D. Deploy an IPS behind the firewall in in-line mode

**Answer:** ([SHOW ANSWER](#))

**NEW QUESTION: 26**

A network attacker exploits application flaws to compromise critical systems in the organization with these objectives:

- Obtain sensitive data and export the data out of the network
- Compromise developer and administrator credentials to potentially gain access

What is the next step after application discovery is completed in Zero Trust networking?

- A. Enforce policies and microsegmentation
- B. Establish visibility and behavior modeling
- C. Ensure trustworthiness of systems
- D. Assess real-time security health

**Answer:** ([SHOW ANSWER](#))

<https://www.cisco.com/c/en/us/solutions/collateral/enterprise/design-zone-security/zt-arch-guide.html>

**NEW QUESTION: 27**

Drag and Drop Question

Data residency and sovereignty requirements are based on regional and industry-specific regulations, and different organizations have different data sovereignty requirements. Implementation of a mechanism that provides control over all access to data by cloud providers and the ability to inspect changes to cloud infrastructure and services is required.

Drag and drop the descriptions from the left onto the corresponding categories on the right in no particular order.

Not all options are used.

Control the availability of the workloads and run them wherever needed, without depending on a single cloud provider

Store and manage encryption key outside of the cloud

Restrict the deployment of new resources to specific provider regions

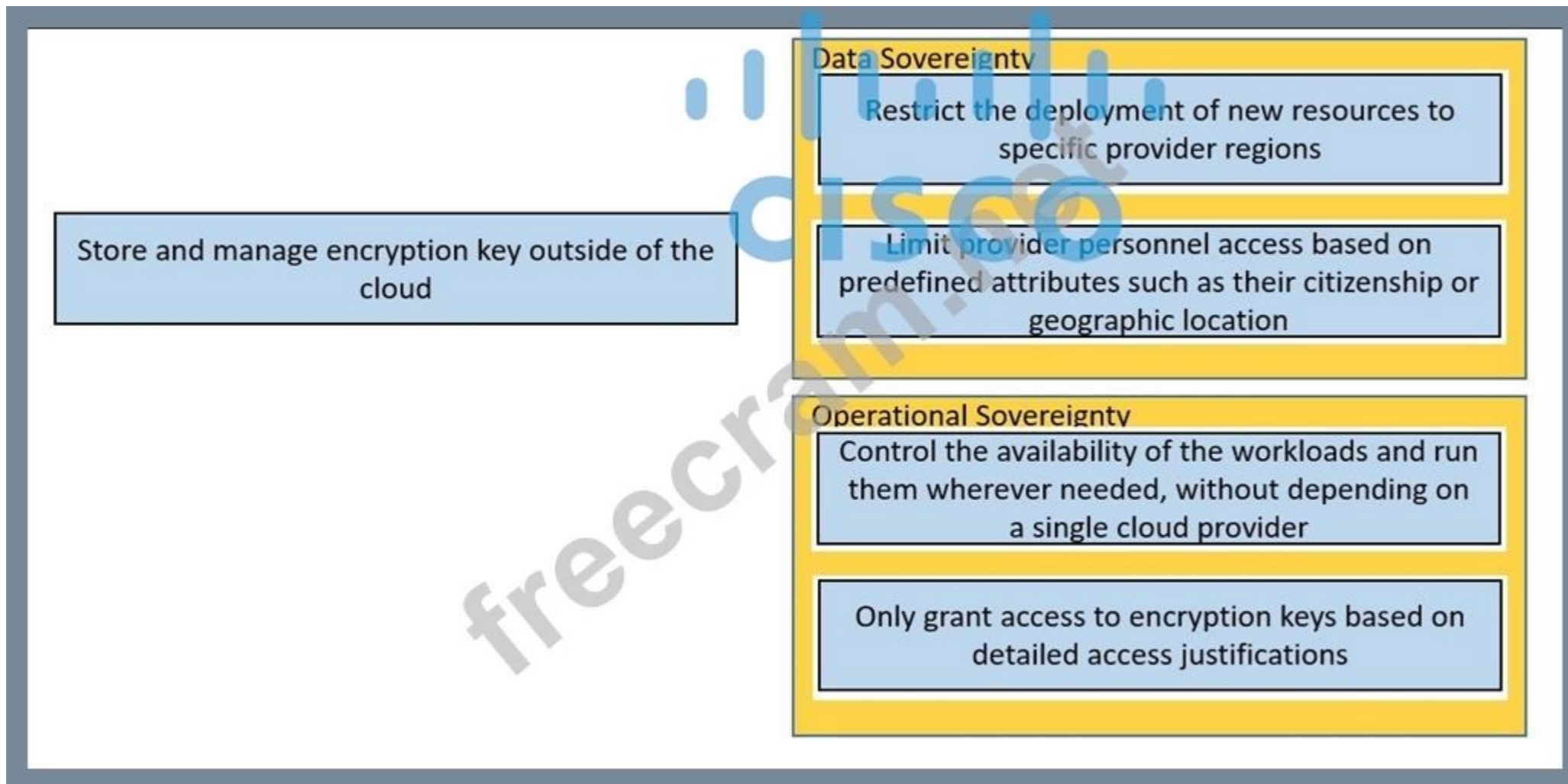
Only grant access to encryption keys based on detailed access justifications

Limit provider personnel access based on predefined attributes such as their citizenship or geographic location

### Data Sovereignty

### Operational Sovereignty

Answer:



**NEW QUESTION: 28**

You are designing a new Ethernet-based metro-area network for an enterprise customer to connect 50 sites within the same city OSPF will be the routing protocol used. The customer is primarily concerned with IPv4 address conservation and convergence time.

Which two combined actions do you recommend? (Choose two)

- A. Determine which OSPF routers will be DR/BDR
- B. Use a single address per router for all P2P links
- C. Use P2P links between routers in a hub-and-spoke design
- D. Configure address aggregation at each site router
- E. Use a multipoint Metro-E service for router connections

Answer: ([SHOW ANSWER](#))

**NEW QUESTION: 29**

An engineer must redesign the QoS strategy for Company XYZ. The current network is experiencing many dropped packets due to oversubscription of the guaranteed bandwidth allocated by the service provider. Company XYZ wants a design with a QoS strategy that controls the traffic flow leaving the Edge router to minimize packet drops. Which QoS technique can be recommended as a solution?

- A. LLQ
- B. policing
- C. rate-limiting

D. traffic shaping

Answer: ([SHOW ANSWER](#))

**NEW QUESTION: 30**

As a service provider is implementing Strong Access Control Measures, which two of the following PCI Data Security Standard requirements must be met? (Choose two.)

- A. Protect stored cardholder data
- B. Assign a unique ID to each person with computer access
- C. Each location must require validating PCI compliance if business has multiple locations
- D. Restrict access to cardholder data to on a need-to-know basis
- E. Encrypt transmission of cardholder data across open or public networks

Answer: ([SHOW ANSWER](#))

**NEW QUESTION: 31**

A business customer deploys workloads in the public cloud. Now the customer network faces governance issues with the flow of IT traffic and must ensure the security of data and intellectual property. Which action helps to identify the issue for further resolution?

- A. Apply workload policies that dictate the security requirements to the workloads that are placed in the cloud
- B. Send IPFIX telemetry data from customer routers to a centralized collector to identify traffic to cloud service providers
- C. Build a zone-based firewall policy on Internet edge firewalls that collects statistics on traffic sent to cloud service providers
- D. Set up a secure tunnel from customer routers to ensure that traffic is protected as it travels to the cloud service providers

Answer: ([SHOW ANSWER](#))

**Valid 400-007 Dumps** shared by EduDump.com for Helping Passing 400-007 Exam! EduDump.com now offer the **newest 400-007 exam dumps**, the EduDump.com 400-007 exam **questions have been updated** and **answers have been corrected** get the **newest** EduDump.com 400-007 dumps with Test Engine here:

<https://www.edudump.com/exams/Cisco/400-007/premium/> (550 Q&As Dumps, **35%OFF** Special Discount Code: **freecram**)

**NEW QUESTION: 32**

What is a web-based model in which a third-party provider hosts applications that are available to customers over the Internet?

- A. PaaS
- B. IaaS
- C. SaaS
- D. WaaS

Answer: ([SHOW ANSWER](#))

**NEW QUESTION: 33**

Which action must be taken before new VoIP systems are implemented on a network to ensure that the network is ready to handle the traffic?

- A. Check if anomaly detection is enabled for SIP and H.323 on Layer 3 devices
- B. Evaluate bandwidth utilization and connection quality
- C. Enable special requirements such as direct DID lines on pickup

D. Make recommendations to limit the size of the half-open session table on routers

Answer: ([SHOW ANSWER](#))

**NEW QUESTION: 34**

A network engineering team is in the process of designing a lab network for a customer demonstration. The design engineer wants to show that the resiliency of the MPLS traffic Engineering Fast Reroute solution has the same failover/failback times as a traditional SONET/SDH network (around 50MSEC). In order to address both link failure and node failure within the lab typology network, which type of the MPLS TE tunnels must be considered for this demonstration?

A. next-next-hop (NNHop) tunnel

B. Next-hop (NHop) tunnel

C. FRR Backup tunnel

D. TE backup tunnel

Answer: ([SHOW ANSWER](#))

**NEW QUESTION: 35**

Company XYZ is designing their network using the three-layer hierarchical model. At which layer must the QoS design classify or mark the traffic?

A. core

B. distribution

C. collapsed core

D. access

Answer: ([SHOW ANSWER](#))

**NEW QUESTION: 36**

What are two design constraints in a standard spine and leaf architecture? (Choose two.)

A. Leaf switches must connect to each other.

B. Endpoints connect only to the spine switches.

C. Spine switches can connect to each other.

D. Each leaf switch must connect to every spine switch.

E. Each spine switch must connect to every leaf switch.

Answer: ([SHOW ANSWER](#))

**NEW QUESTION: 37**

Which statement about OSPF hub-and-spoke topology is true?

A. The DR election is a challenge unless a point-to-point network type is used

B. The spoke routers can belong to different areas regardless of the underlying OSPF network type

C. The DR and BDR election occurs regardless of the underlying OSPF network type

D. Traffic does not need to traverse the hub to reach the spokes.

Answer: ([SHOW ANSWER](#))

**NEW QUESTION: 38**

What are three examples of solution components of the network infrastructure that help enforce security policy compliance on all devices as they seek to access the network and computing resources, thereby limiting damage from emerging security threats such as viruses, worms, and spyware? (Choose three.)

- A. posture agent
- B. audit and decision point servers
- C. management and reporting tools
- D. endpoint security application
- E. network access devices
- F. web filtering devices

**Answer: A,D,E (LEAVE A REPLY)**

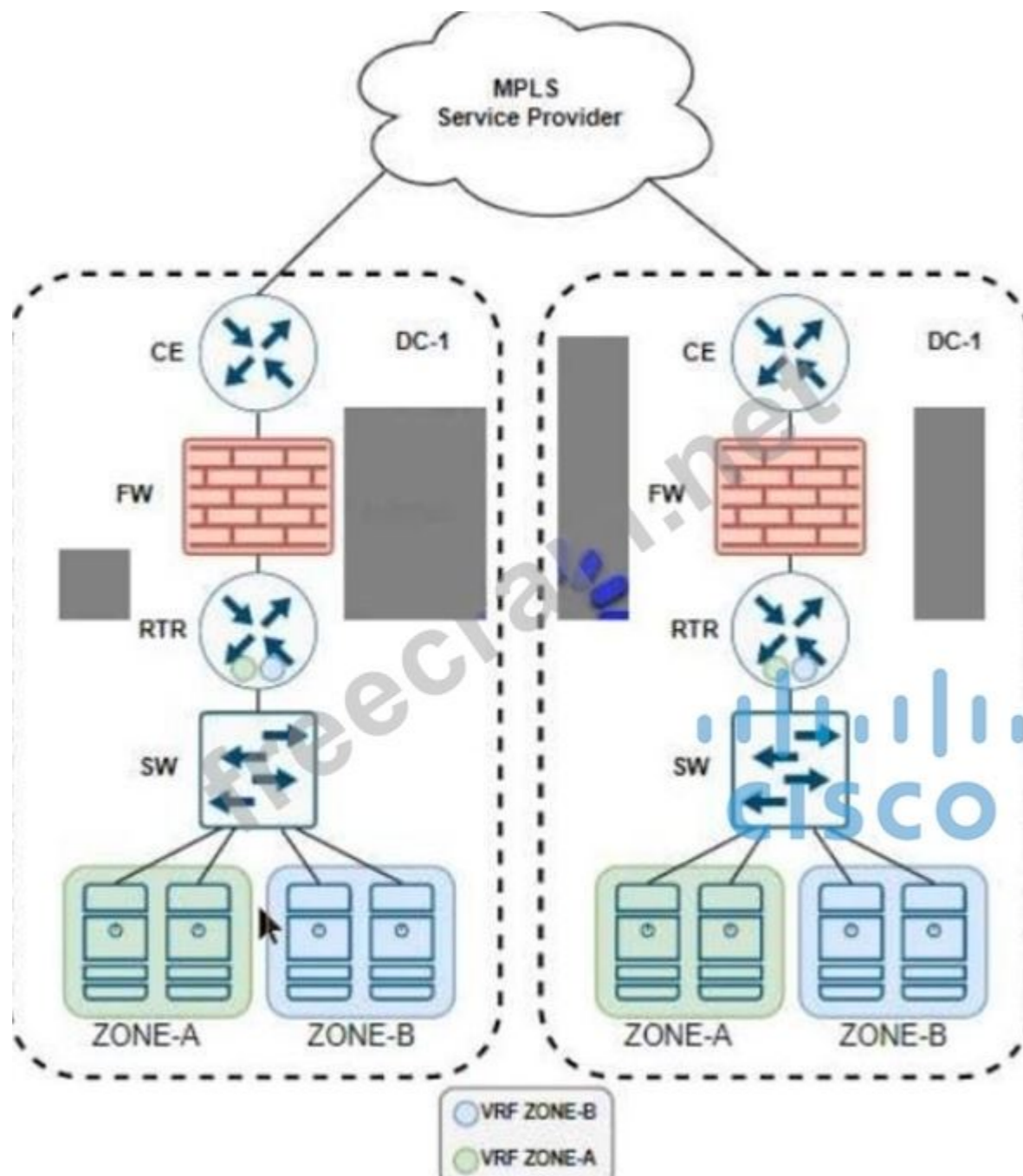
Posture agent: Ensures that devices comply with security policies before they can access the network.

Endpoint security application: Protects endpoints from threats like viruses, worms, and spyware by enforcing security measures.

Network access devices: Such as switches and routers, enforce security policies and control access to network resources.

**NEW QUESTION: 39**

Refer to the exhibit. A company named XYZ has two data centers. A recent change to the company's security policy states that the firewall must not inspect intrazone communication between the data centers. The number of zones soon will be increased due to the company application transformation strategy. Which two solutions meet the requirements? (Choose two.)



- A. Enable MPLS between the data center routers through a GRE tunnel.
- B. Enable MPLS between the data center routers through an L2VPN service.
- C. Extend each VRF between the data center routers through GRE tunnel.
- D. Interconnect the data center switches through an L2VPN service.
- E. Extend each VRF between the data center routers through an L3VPN service.

**Answer:** ([SHOW ANSWER](#))

#### NEW QUESTION: 40

A business requirement stating that failure of WAN access for dual circuits into an MPLS provider for a Data Centre cannot happen due to related service credits that would need to be paid has led to diversely routed circuits to different points of presence on the providers network? What should a network designer also consider as part of the requirement?

- A. Out of band access to the MPLS routers

- B. Dual PSUs & Supervisors on each MPLS router
- C. Provision of an additional MPLS provider
- D. Ensuring all related remote branches are dual homed to the MPLS network

**Answer: C ([LEAVE A REPLY](#))**

#### **NEW QUESTION: 41**

A large enterprise customer is planning a new WAN connection to its headquarters. The current architecture is dual homed with static routing, but users complain when a specific link fails.

Failure of the other link does not affect any services or applications. The new WAN connection must provide the headquarters with a resilient network design and increase the return on investment. Which solution should be recommended to the customer?

- A. Add an additional link to the WAN.
- B. Use dynamic routing toward the WAN.
- C. Implement granular quality of service on the links.
- D. Procure additional bandwidth.

**Answer: ([SHOW ANSWER](#))**

#### **NEW QUESTION: 42**

A financial institution has adopted a hybrid cloud strategy to store sensitive customer data on- premises while utilizing public cloud services for non-sensitive applications. They want a secure and seamless integration between their on-premises data center and the public cloud.

Which cloud connectivity option can they choose given these requirements?

- A. direct connect
- B. remote access VPN
- C. cloud on-ramp
- D. custom WAN integration

**Answer: ([SHOW ANSWER](#))**

A dedicated direct connect link provides secure, high-bandwidth, and low-latency connectivity between the on-premises data center and the public cloud, making it ideal for hybrid cloud deployments where sensitive and non-sensitive workloads must integrate seamlessly.

#### **NEW QUESTION: 43**

Company XYZ is running OSPF in their network. They have merged with another company that is running EIGRP as the routing protocol. Company XYZ now needs the two domains to talk to each other with redundancy, while maintaining a loop free environment.

The solution must scale when new networks are added into the network in the near future.

Which technology can be used to meet these requirements?

- A. single point route-redistribution with route filtering using ACLs
- B. single point route-redistribution with route filtering using route tags
- C. multipoint route-redistribution with route filtering using route tags
- D. multipoint route-redistribution with route filtering using ACLs

**Answer: ([SHOW ANSWER](#))**

#### **NEW QUESTION: 44**

When organizations initially start consuming public cloud services, they often use VPNs over the internet to connect their on-premises applications to the public cloud infrastructure. In which two cases are other connectivities a better fit? (Choose two)

- A. Latency sensitive multimedia streaming
- B. desktop-as-a-service using VDI
- C. migration to transit gateway
- D. high availability
- E. cost sensitive business applications

**Answer:** ([SHOW ANSWER](#))

Latency sensitive multimedia streaming requires low and consistent latency as well as high bandwidth to deliver smooth, high-quality streams. VPNs over the public internet often suffer from variable latency and packet loss, making private or dedicated connections (like Direct Connect, ExpressRoute, or Software-Defined Cloud Interconnection) more suitable.

Desktop-as-a-service (DaaS) using Virtual Desktop Infrastructure (VDI) also demands low latency and high reliability to provide a responsive user experience. VPNs over the internet can introduce jitter and delays that degrade the performance of remote desktops, so private or dedicated cloud connectivity options are preferred

#### **NEW QUESTION: 45**

Which two actions minimize the impact of the trusted NMS polling your network, such as high CPU utilization on network devices and network instability? (Choose two.)

- A. Implement SNMP community restrictions that are associated with an ACL
- B. Disable unused OIDs and MIBs on the NMS systems
- C. Increase the SNMP process priority
- D. Unload unused MIBs from the network devices
- E. Prevent polling of large tables through the use of SNMP OID restrictions

**Answer:** ([SHOW ANSWER](#))

#### **NEW QUESTION: 46**

In the In-Band Network Telemetry (INT) approach, telemetry instructions are encoded into packet header fields and then processed by network switches as they flow. Which element makes INT different from the conventional monitoring?

- A. programmable forwarding pipelines
- B. collective network state
- C. sampling subsets of packets
- D. fixed counters reading

**Answer:** ([SHOW ANSWER](#))

In-Band Network Telemetry (INT) differs from conventional monitoring by embedding telemetry instructions into packet headers, which requires programmable forwarding pipelines in network devices to process and carry the telemetry data in real time.

**Valid 400-007 Dumps** shared by EduDump.com for Helping Passing 400-007 Exam! EduDump.com now offer the **newest 400-007 exam dumps**, the EduDump.com 400-007 exam **questions have been updated** and **answers have been corrected** get the **newest** EduDump.com 400-007 dumps with Test Engine here:

<https://www.edudump.com/exams/Cisco/400-007/premium/> (550 Q&As Dumps, **35%OFF** Special Discount Code: **freecram**)

#### **NEW QUESTION: 47**

Which Interconnectivity method offers the fastest convergence in the event of a unidirectional issue between three Layer 3 switches connected together with routed links in the same rack in a data center?

- A. Fiber Ethernet connectivity with BFD enabled
- B. Copper Ethernet connectivity with UDLD enabled
- C. Copper Ethernet connectivity with BFD enabled
- D. Fiber Ethernet connectivity with UDLD enabled

Answer: ([SHOW ANSWER](#))

#### NEW QUESTION: 48

IPFIX data collection via standalone IPFIX probes is an alternative to flow collection from routers and switches.

Which use case is suitable for using IPFIX probes?

- A. observation of critical links
- B. performance monitoring
- C. security
- D. capacity planning

Answer: A ([LEAVE A REPLY](#))

#### NEW QUESTION: 49

In a redundant hub and spoke "wheel" design, all spokes are connected to the hub, and spokes are connected to other spokes as well. During failure on one spoke link, the traffic from that site can be sent to a neighboring site for it to be forwarded to the hub site. But during peak hours, a link is overloaded and traffic is re-routed to a neighbor, which subsequently becomes overloaded.

This overload results in network traffic oscillation as the load varies at each spoke site. This design provides more redundancy but not more resiliency because the routing protocol must process many alternate paths to determine the lowest cost path. Which two design changes help to improve resiliency in this case? (Choose two.)

- A. Eliminate links between every spoke.
- B. Increase the number of redundant paths considered during the routing convergence calculation.
- C. Use two links to each remote site instead of one.
- D. Increase routing protocol convergence timers.
- E. Increase unequal-cost parallel paths.

Answer: ([SHOW ANSWER](#))

#### NEW QUESTION: 50

Which function is performed at the access layer of the three-layer hierarchical network design model?

- A. fault isolation
- B. QoS classification and marking boundary
- C. fast transport
- D. redundancy and load balancing
- E. reliability -

Answer: ([SHOW ANSWER](#))

#### NEW QUESTION: 51

Two routers R1 and R2 are directly connected through an Ethernet link. Both routers are running OSPF. OSPF has been registered with BFD and BFD is running in asynchronous mode with the echo function enabled. Which two actions occur that are related to the echo function? (Choose two.)

- A. Only BFD control packets are sent from forwarding engines along the Layer 2 path to perform detection
- B. BFD control packets are sent at a higher pace because the echo function is enabled
- C. BFD sessions at either end actively participate in the forwarding of echo packets
- D. BFD control packets are sent at a slower pace because the echo function is enabled
- E. BFD echo packets are sent from forwarding engines along the Layer 2 path to perform detection

Answer: ([SHOW ANSWER](#))

#### NEW QUESTION: 52

If the desire is to connect virtual network functions together to accommodate different types of network service connectivity, what must be deployed?

- A. linking
- B. daisy chaining
- C. switching
- D. service chaining
- E. bridging

Answer: ([SHOW ANSWER](#))

#### NEW QUESTION: 53

Refer to the table. A customer investigates connectivity options for a DCI between two production data centers. The solution must provide dual 10G connections between locations with no single points of failure for Day 1 operations. It must also include an option to scale for up to 20 resilient connections in the second year to accommodate isolated SAN over IP and isolated dedicated replication IP circuits. All connectivity methods are duplex 10 Gbps. Which transport technology costs the least over two years in this scenario?

CONNECTIVITY	CAPEX	OPEX ANNUAL	INSTALLATION FEE	TERM
DWDM over dark fiber	\$250,000	\$100,000	\$30,000	60 months
CWDM over dark fiber	\$150,000	\$100,000	\$25,000	60 months
MPLS	\$50,000	\$150,000	\$75,000	12 months
Metro Ethernet	\$45,000	\$125,000	\$5,000	36 months

- A. DWDM
- B. MPLS
- C. Metro Ethernet
- D. CWDM

Answer: ([SHOW ANSWER](#))

#### NEW QUESTION: 54

In the case of outsourced IT services, the RTO is defined within the SLA. Which two support terms are often included in the SLA by IT and other service providers? (Choose two.)

- A. resolution time
- B. network sustainability
- C. network reliability
- D. network size and cost
- E. support availability

Answer: ([SHOW ANSWER](#))

**NEW QUESTION: 55**

SDN emerged as a technology trend that attracted many industries to move from traditional networks to SDN. Which challenge is solved by SDN for cloud service providers?

- A. need for intelligent traffic monitoring
- B. exponential growth of resource-intensive application
- C. complex and distributed management flow
- D. higher operating expense and capital expenditure

Answer: ([SHOW ANSWER](#))

The goal of SDN is to provide centralized management instead of distributed.

**NEW QUESTION: 56**

Which methodology is the leading lifecycle approach to network design and implementation?

- A. Spiral model
- B. V model
- C. PPDIOO
- D. Waterfall model

Answer: ([SHOW ANSWER](#))

**NEW QUESTION: 57**

What are two examples of design considerations when working with VXLAN? (Choose two.)

- A. A multicast enabled underlay helps to handle broadcast, unknown unicast, and multicast traffic in the VXLAN fabric.
- B. A VXLAN tunnel end-point can be terminated on hardware or software.
- C. VTEP is a 24-bit field in the VXLAN header used to uniquely identify the VXLAN.
- D. EVPN control plane is a mandatory technology when you have VXLANs stretching Layer 2 connectivity over an intervening Layer 3 network.
- E. VNI is a 48-bit field in the VLAN header used to uniquely identify the VXLAN.

Answer: ([SHOW ANSWER](#))

VXLAN uses multicast in the underlay to handle BUM (Broadcast, Unknown unicast, Multicast) traffic efficiently when a control plane like EVPN is not deployed.

VXLAN Tunnel Endpoints (VTEPs) can be implemented in hardware (switches) or software (hypervisors, virtual switches), providing deployment flexibility.

**NEW QUESTION: 58**

Which two features describe controller-based networking solutions compared to traditional networking solutions? (Choose two.)

- A. provide centralization of primary IT functions
- B. inflate licensing costs
- C. allow for fewer network failures
- D. reduce network configuration complexity
- E. increase network bandwidth usage

Answer: ([SHOW ANSWER](#))

**NEW QUESTION: 59**

Which service abstracts away the management of the operating system, middleware, and runtime?

- A. IaaS
- B. PaaS
- C. BMaaS
- D. SaaS

Answer: ([SHOW ANSWER](#))

**NEW QUESTION: 60**

An external edge router provides connectivity from a service provider to an enterprise. Which two Internet edge best practices meet compliance regulations? (Choose two.)

- A. Implement filtering to control traffic that is sourced from the infrastructure IP space
- B. Use login banners and interface access lists to restrict administrative access to the system
- C. Send logs to a centralized logging collection server
- D. Implement EBGP to advertise all owned IP blocks
- E. Enable and use only secure protocols

Answer: ([SHOW ANSWER](#))

**NEW QUESTION: 61**

A key to maintaining a highly available network is building in the appropriate redundancy to protect against failure. This redundancy is carefully balanced with the inherent complexity of redundant systems. Which design consideration is relevant for enterprise WAN use cases when it comes to resiliency?

- A. The design approach should consider simple and centralized management aspect
- B. Design in a way that it simplifies and improves ease of deployment
- C. Design automation tools wherever it is appropriate for greater visibility
- D. Design in a way that expects outages and attacks on the network and its protected resources

Answer: ([SHOW ANSWER](#))

**Valid 400-007 Dumps** shared by EduDump.com for Helping Passing 400-007 Exam! EduDump.com now offer the **newest 400-007 exam dumps**, the EduDump.com 400-007 exam **questions have been updated** and **answers have been corrected** get the **newest** EduDump.com 400-007 dumps with Test Engine here:

<https://www.edudump.com/exams/Cisco/400-007/premium/> (550 Q&As Dumps, **35%OFF** Special Discount Code: **freecram**)

**NEW QUESTION: 62**

Two companies need to implement an extranet overlay network solution by using a VPN tunnel over the internet to use each other's HTTP REST APIs. The solution must only provide data integrity because data confidentiality will be covered at the application layer. The existing firewall devices will be used as VPN endpoints for the tunnel, but they have limited available resources.

Which type of VPN tunnel must be deployed for the extranet service?

- A. ipsec esp
- B. ipsec ah
- C. gre tunnel
- D. greIPsec

Answer: ([SHOW ANSWER](#))

The requirement is to provide data integrity only, not confidentiality, because confidentiality is handled at the application layer.

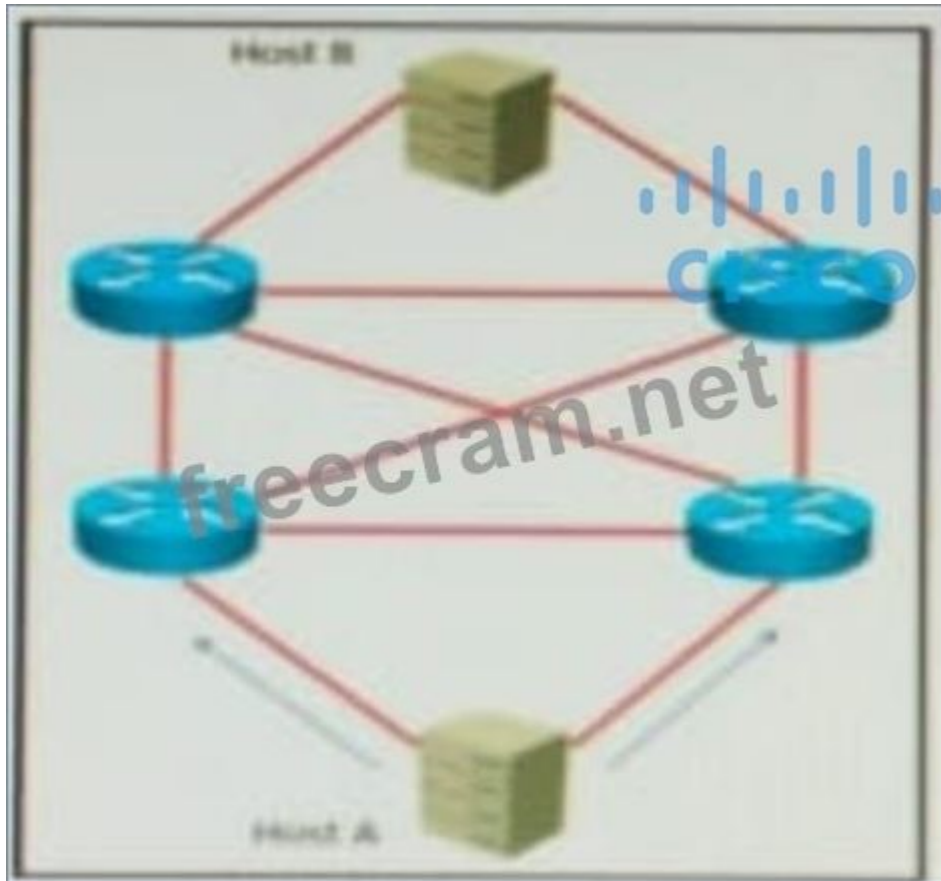
IPSec AH provides authentication and integrity for the IP packets without encrypting the payload, ensuring data integrity but not confidentiality.

Since the firewall devices have limited resources, using IPSec AH (which only provides integrity and authentication but no encryption) reduces processing overhead compared to ESP.

Therefore, IPSec AH is the appropriate choice for a VPN tunnel that ensures data integrity without confidentiality, suitable for resource-constrained firewall endpoints.

### NEW QUESTION: 63

Refer to the exhibit. All links are P2P Layer 3. A high availability application is synchronizing data between host A and host B.



To increase chance of delivery the same data is sent twice from host A on two different NICs toward the two NICs on host B.

Which solution must be deployed in the network to ensure that any failure in the network does not trigger data loss on host B?

- A. IP Fast Reroute
- B. Static routes
- C. BFD
- D. EIGRP with feasible successors

Answer: ([SHOW ANSWER](#))

### NEW QUESTION: 64

Company XYZ is redesigning their QoS policy. Some of the applications used by the company are real-time applications. The QoS design must give these applications preference in terms of transmission. Which QoS strategy can be used to fulfill the requirement?

- A. weighted random early detection
- B. first-in first-out
- C. low-latency queuing

D. weighted fair queuing

Answer: ([SHOW ANSWER](#))

**NEW QUESTION: 65**

The network designer needs to use GLOP IP address in order make them unique within their ASN, which multicast address range will be considered?

A. 232.0.0.0 to 232.255.255.255

B. 239.0.0.0 to 239.255.255.255

C. 233.0.0.0 to 233.255.255.255

D. 224.0.0.0 to 224.0.0.255

Answer: ([SHOW ANSWER](#))

**NEW QUESTION: 66**

Which two conditions must be met for EIGRP to maintain an alternate loop-free path to a remote network? (Choose two.)

A. The Feasible Distance from a successor is lower than the local Reported Distance.

B. The Reported Distance from a successor is lower than the local Feasible Distance.

C. A feasible successor must be present.

D. The Reported Distance from a successor is higher than the local Feasible Distance.

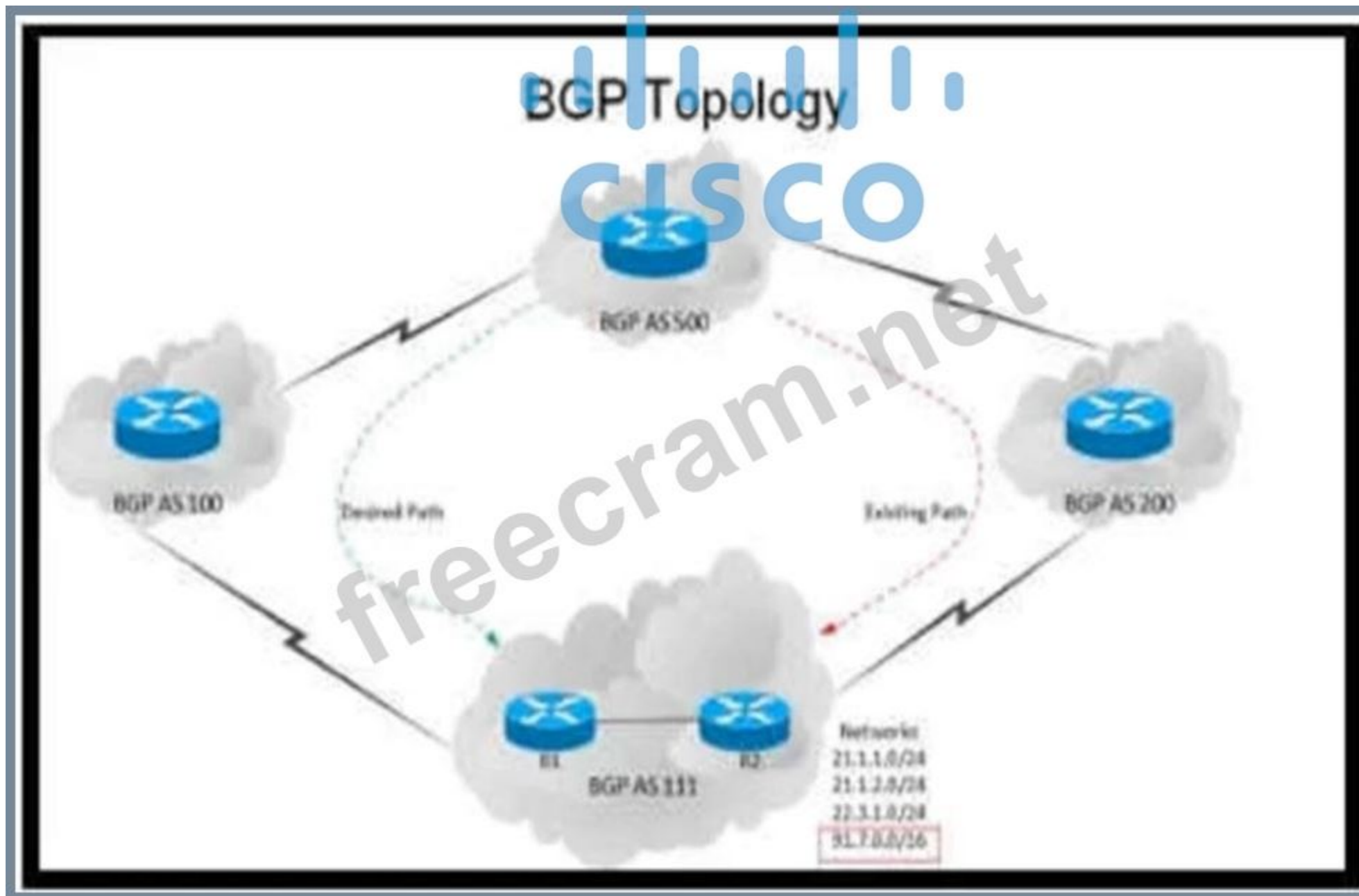
E. The feasibility condition does not need to be met.

Answer: ([SHOW ANSWER](#))

**NEW QUESTION: 67**

Refer to the exhibit. An engineer has been asked to redesign the traffic flow toward AS 111 coming from AS 500. Traffic destined to AS 111 network 91.7.0.0/16 should come in via AS 100, while traffic destined to all other networks in AS 111 should continue to use the existing path.

Which BGP attributes are best suited to control this inbound traffic coming from BGP AS 500 into the 91.7.0.0/16 network?



- A. Use extended community for the 91.7.0.0/16 network, not advertising it to the bi-lateral peer.
- B. Prepend AS path for the 91.7.0.0/16 network and set it for neighbor in AS 200.
- C. Use local preference on R1 for the networks that AS 500 advertises to AS 111.
- D. Set higher MED for neighbor in AS 100 to influence incoming traffic for the 91.7.0.0/16 network.

Answer: ([SHOW ANSWER](#))

#### NEW QUESTION: 68

An architect receives a business requirement from a CTO that states the RTO for a new system should be 4 hours, and the RPO should be less than 1 hour. Business continuity must also be ensured in the event of a natural disaster. Which replication method and data center technology should be used?

- A. asynchronous replication over dual data centers via DWDM
- B. asynchronous replication over geographically dispersed dual data centers via CWDM
- C. synchronous replication over geographically dispersed dual data centers via MPLS
- D. synchronous replication over dual data centers via Metro Ethernet

Answer: ([SHOW ANSWER](#))

**NEW QUESTION: 69**

What are two primary design constraints when a robust infrastructure solution is created?

(Choose two.)

- A. component availability
- B. total cost
- C. monitoring capabilities
- D. staff experience
- E. project time frame

Answer: ([SHOW ANSWER](#))

**NEW QUESTION: 70**

Which solution component helps to achieve rapid migration to the cloud for SaaS and public cloud leveraging SD-WAN capabilities?

- A. service-oriented cloud architecture
- B. cloud registry
- C. microservices in the cloud
- D. Cloud onramp

Answer: ([SHOW ANSWER](#))

**NEW QUESTION: 71**

Organic growth or decline comes from a company's normal business activities, rather than through acquisitions or divestment. Changes in usage patterns can also cause organic change in network requirements Which tool is useful when designing and operationalizing a network that is in the process of change?

- A. modularity
- B. change management
- C. monitoring
- D. mobility

Answer: ([SHOW ANSWER](#))

**NEW QUESTION: 72**

As part of workspace digitization, a large enterprise has migrated all their users to Desktop as a Service (DaaS), by hosting the backend system in their on-premises data center. Some of the branches have started to experience disconnections to the DaaS at periodic intervals, however, local users in the data center and head office do not experience this behavior.

Which technology can be used to mitigate this issue?

- A. WRED
- B. traffic policing
- C. tail drop
- D. traffic shaping

Answer: ([SHOW ANSWER](#))

**NEW QUESTION: 73**

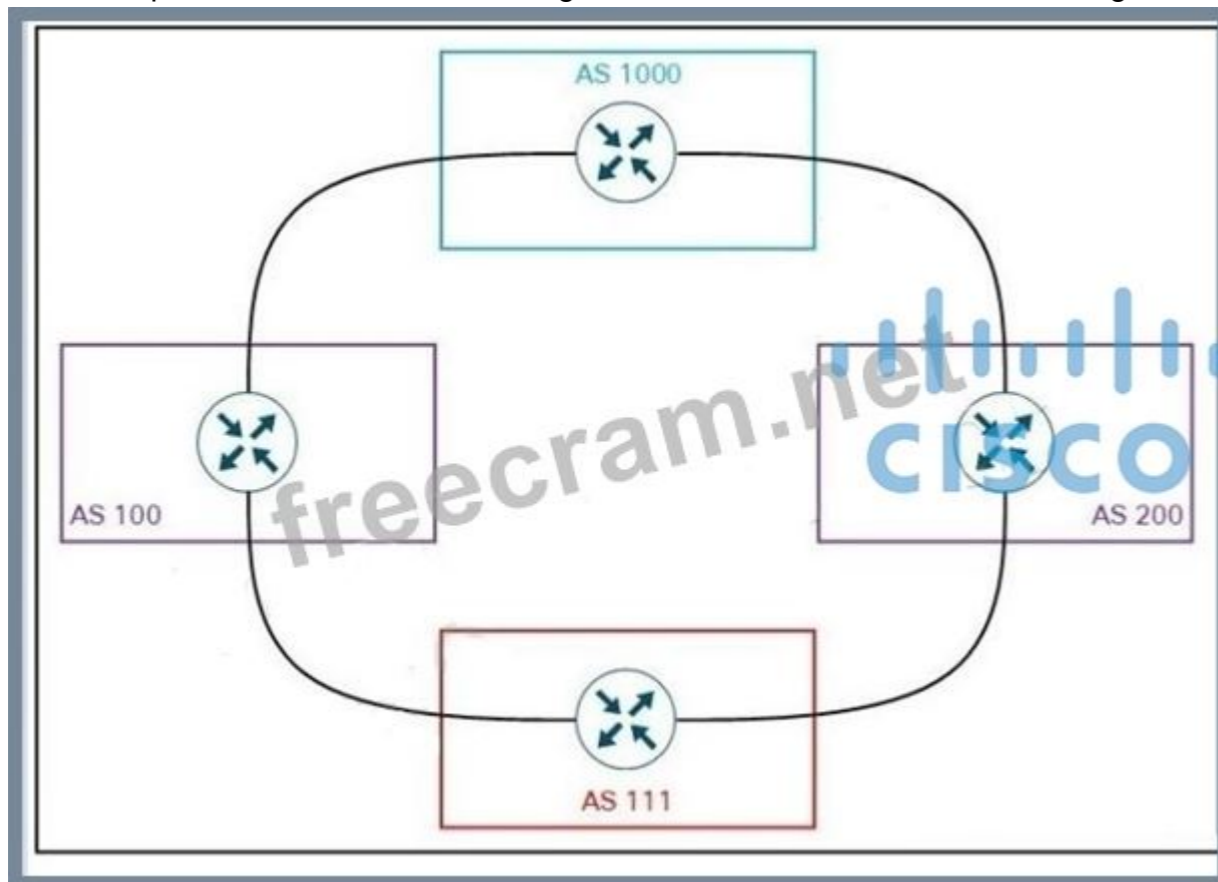
Which protocol does an SD-Access wireless Access Point use for its fabric data plane?

- A. CAPWAP
- B. VXLAN
- C. MPLS
- D. GRE
- E. LISP

Answer: ([SHOW ANSWER](#))

**NEW QUESTION: 74**

Refer to the exhibit. An engineer is designing the network for a multihomed customer running in AS 111. AS 111 does not have any other ASs connected to it. Which technology is more comprehensive to use in the design to make sure that the AS is not being used as a transit AS?



- A. Use the local preference attribute to configure your AS as a "non-transit" AS.
- B. Include a prefix list to only receive routes from neighboring ASs.
- C. Configure the AS-set attribute to allow only routes from AS 111 to be propagated to the neighbor ASs.
- D. Include an AS path access list to send routes to the neighboring ASs that only have an empty AS path field.

Answer: ([SHOW ANSWER](#))

Using an AS path access list helps ensure that only routes originating from the customer AS (AS

111) are advertised to another ASs. By filtering routes with an empty AS path field, AS 111 can prevent being used as a transit AS by disallowing routes coming from another ASs.

This is a more comprehensive approach compared to other methods in the options provided.

**NEW QUESTION: 75**

An organization is working on a design solution for a new Internet-based remote access virtual private network that has 1000 remote sites. A network administrator recommends GETVPN as the model.

What is a potential problem of using GETVPN in this situation?

- A. GETVPN requires a high level of background traffic to maintain its IPsec SAs.
- B. GETVPN and DMVPN do not interoperate.
- C. GETVPN is not scalable to a large number of remote sites.
- D. GETVPN key servers would be on public, hacker-reachable space and need higher security.

**Answer:** ([SHOW ANSWER](#))

GETVPN is designed for private WANs, not Internet-based remote access. In an Internet-based VPN with 1000 remote sites, the key servers would be exposed in public address space, making them reachable by attackers and requiring much stronger security controls.

#### **NEW QUESTION: 76**

Which design principal improves network resiliency?

- A. Added reliability
- B. Added load-balancing
- C. Added redundancy
- D. Added confidentiality

**Answer:** ([SHOW ANSWER](#))

**Valid 400-007 Dumps** shared by EduDump.com for Helping Passing 400-007 Exam! EduDump.com now offer the **newest 400-007 exam dumps**, the EduDump.com 400-007 exam **questions have been updated** and **answers have been corrected** get the **newest** EduDump.com 400-007 dumps with Test Engine here:

<https://www.edudump.com/exams/Cisco/400-007/premium/> (550 Q&As Dumps, **35%OFF Special Discount Code: freecram**)

#### **NEW QUESTION: 77**

It is often seen that companies pick a cloud vendor solely based on technical preferences without putting enough weight on the business strategies that are driving the cloud initiatives. Which strategic requirement may come into play where it is more likely that the decision makers will look to leverage IaaS over SaaS or PaaS?

- A. selling products and services globally 24/7
- B. integration with partner or vendor supply chains
- C. control over the underlying infrastructure
- D. speed-to-market is more important for an initiative

**Answer:** ([SHOW ANSWER](#))

IaaS (Infrastructure as a Service) provides the most control over the underlying infrastructure, allowing organizations to manage and customize the environment according to their specific needs. This is a key strategic requirement when decision makers prioritize control over the infrastructure compared to using pre-built platforms (PaaS) or software solutions (SaaS).

#### **NEW QUESTION: 78**

You are designing the QoS policy for a company that is running many TCP-based applications.

The company is experiencing tail drops for these applications. The company wants to use a congestion avoidance technique for these applications. Which QoS strategy can be used to fulfill the requirement?

- A. first-in first-out
- B. low-latency queuing
- C. weighted random early detection
- D. weighted fair queuing

Answer: ([SHOW ANSWER](#))

**NEW QUESTION: 79**

Refer to the table. A customer investigates connectivity options for a DCI between two production data centers to aid a large-scale migration project. The solution must provide a single 10G connection between locations and be able to run its own varying QoS profiles without service provider interaction based on the migration stages. All connectivity methods are at 10 Gbps.

Which transport technology costs the least if the connectivity is required for just one year?

CONNECTIVITY	CAPEX	OPEX ANNUAL	INSTALLATION FEE	TERM
DWDM over dark fiber	\$250,000	\$100,000	\$30,000	12 months
CWDM over dark fiber	\$150,000	\$100,000	\$25,000	18 months
MPLS wires only	\$50,000	\$80,000	\$5,000	24 months
Metro Ethernet	\$45,000	\$100,000	\$5,000	36 months

- A. MPLS wires only
- B. DWDM over dark fiber
- C. Metro Ethernet
- D. CWDM over dark fiber

Answer: ([SHOW ANSWER](#))

**NEW QUESTION: 80**

In an OSPF network with routers connected together with Ethernet cabling, which topology typically takes the longest to converge?

- A. partial mesh
- B. full mesh
- C. ring
- D. squared
- E. triangulated

Answer: ([SHOW ANSWER](#))

<https://learningnetwork.cisco.com/s/question/0D53i00000M0a29CAB/ospf-convergence-and- typologies>

**NEW QUESTION: 81**

Feature-rich networks are complex network models that provide one or more features in addition to the network topology. In attributed networks, attributes are assigned to the nodes to describe the corresponding entities. For example, in a friendship network, the actors can be described by their genre and their age. Which two alternative network models can be used to model interaction over time or to model each attribute by a specific relationship? (Choose two.)

- A. temporal network
- B. location-aware network

- C. probabilistic network
- D. multilayer network
- E. information network
- F. heterogeneous network

Answer: ([SHOW ANSWER](#))

**NEW QUESTION: 82**

You want to split an Ethernet domain in two.

Which parameter must be unique in this design to keep the two domains separated?

- A. STP type
- B. VLAN ID
- C. VTP password
- D. VTP domain

Answer: ([SHOW ANSWER](#))

**NEW QUESTION: 83**

Which best practice ensures data security in the private cloud?

- A. Use the same vendor for consistent encryption.
- B. Encrypt data at rest and in transition.
- C. Anonymize data ownership to comply with privacy rules.
- D. Use IPsec for communication between unsecured network connection

Answer: ([SHOW ANSWER](#))

**NEW QUESTION: 84**

Software-defined networking architecture is used for cost-effective, adaptable and easily manageable applications. In which two software-defined networks is SDN commonly used?

(Choose two.)

- A. control network
- B. mobile network
- C. metro network
- D. application network
- E. wide area network

Answer: ([SHOW ANSWER](#))

**NEW QUESTION: 85**

Which management category is not part of FCAPS framework?

- A. Configuration
- B. Security
- C. Authentication
- D. Performance
- E. Fault-management

**Answer: ([SHOW ANSWER](#))**

**NEW QUESTION: 86**

A multinational enterprise integrates a cloud solution with these objectives:

- Achieve seamless connectivity across different countries and regions.
- Extend data center and private clouds into public clouds and provider-hosted clouds.

What are two outcomes of deploying data centers and fabrics that interconnect different cloud networks? (Choose two.)

- A. unidirectional workload mobility across the cloud
- B. ability to place workloads across clouds
- C. centralized visibility
- D. data and network ownership
- E. enhanced security

**Answer: B,C ([LEAVE A REPLY](#))**

**NEW QUESTION: 87**

While positive feedback loops generally don't last long enough to bring down a network completely, then long enough to disrupt traffic flows or to cause the network to converge more slowly than it should.

What are two examples of cases where a positive feedback loop can be long-lived and devastating to the control plane? (Choose two)

- A. when input traffic volumes on an interface causes the interface queue to overflow
- B. the rate at which the information carried in the various control plane protocols changes
- C. modifying the flow of traffic through the network by steering traffic based on QoS attributes
- D. during redistribution of reachability information between multiple control planes

**Answer: ([SHOW ANSWER](#))**

The rate at which control plane information changes can create a positive feedback loop because rapid, continuous updates cause devices to constantly recalculate routes and states, which can overwhelm the control plane and slow network convergence. This sustained churn can be long-lived and destabilizing.

Redistribution of reachability information between multiple control planes is known to open the door to very destructive positive feedback loops. When routes are redistributed between different routing protocols or control planes, inconsistent metrics or route flapping can cause repeated updates and oscillations, severely impacting control plane stability.

**NEW QUESTION: 88**

An organization that heavily relies on SaaS applications for its day-to-day operations has advised their Chief Data Officer to collect and retain only the required technical data and information using available tools.

Which term covers this process?

- A. information governance
- B. corporate compliance
- C. data governance
- D. regulatory compliance

**Answer: ([SHOW ANSWER](#))**

Data governance defines how data is collected, retained, and managed to ensure that only the required technical data and information are stored, aligning with business and compliance needs while avoiding unnecessary data collection.

**NEW QUESTION: 89**

Which two mechanisms avoid suboptimal routing in a network with dynamic mutual redistribution between multiple OSPFv2 and EIGRP boundaries? (Choose two.)

- A. route filtering
- B. matching OSPF external routes
- C. matching EIGRP process ID
- D. AD manipulation
- E. route tagging

**Answer:** ([SHOW ANSWER](#))

**NEW QUESTION: 90**

Company XYZ was not satisfied with the reconvergence time OSPF is taking. BFD was implemented to try to reduce the reconvergence time, but the network is still experiencing delays when having to reconverge. Which technology will improve the design?

- A. OSPF fast hellos
- B. Change the OSPF hello and dead intervals
- C. Change the protocol to BGP
- D. BFD echo

**Answer:** ([SHOW ANSWER](#))

**NEW QUESTION: 91**

Company XYZ is operating several data centers across the globe to cater to a highly mobile workforce and dynamic workloads. Consider the cost of the connections QoS and latency requirements and the global spread of users. Which cloud connectivity mechanism is the preferred mode of connectivity to public clouds?

- A. cloud on-ramp
- B. internet-based direct connect circuits
- C. IPsec over internet
- D. MPLS direct connect

**Answer:** ([SHOW ANSWER](#))

**Valid 400-007 Dumps** shared by EduDump.com for Helping Passing 400-007 Exam! EduDump.com now offer the **newest 400-007 exam dumps**, the EduDump.com 400-007 exam **questions have been updated** and **answers have been corrected** get the **newest** EduDump.com 400-007 dumps with Test Engine here:

<https://www.edudump.com/exams/Cisco/400-007/premium/> (550 Q&As Dumps, **35%OFF** Special Discount Code: **freecram**)

**NEW QUESTION: 92**

In search of a system capable of hosting, monitoring compiling, and testing code in an automated way, what can be recommended to the organization?

- A. Ansible
- B. Jenkins
- C. Chef
- D. Perl

**Answer:** ([SHOW ANSWER](#))

**NEW QUESTION: 93**

The Company XYZ network is experiencing attacks against their router.

Which type of Control Plane Protection must be used on the router to protect all control plane IP traffic that is destined directly for one of the router interfaces?

- A. Control Plane Protection host subinterface
- B. Control Plane Protection transit subinterface
- C. Control Plane Protection main interface
- D. Control Plane Protection CEF-exception subinterface

Answer: ([SHOW ANSWER](#))

**NEW QUESTION: 94**

Company XYZ has a new network based on IPv6. Some of the subnets that they are planning to use will be confidential and need an addressing scheme that confines them to the local campus network.

Which type of IPv6 addresses can be used for these networks in the IPv6 addressing design?

- A. private addresses
- B. unique local addresses
- C. link-local addresses
- D. local addresses

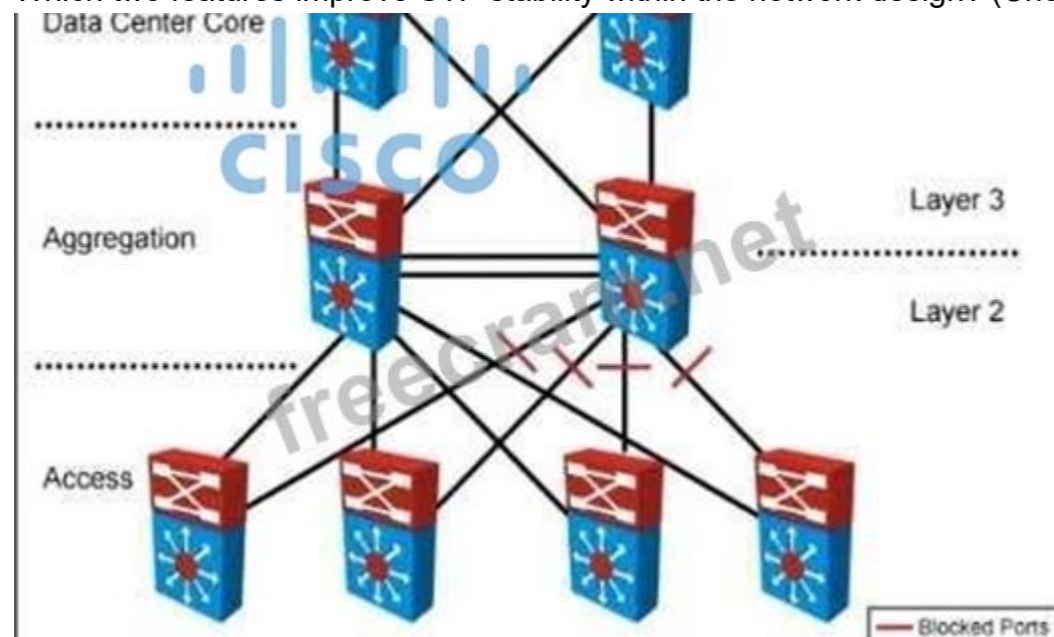
Answer: ([SHOW ANSWER](#))

**NEW QUESTION: 95**

Refer to the exhibit. Your company designed a network to allow server VLANs to span all access switches in a data center.

In the design, Layer 3 VLAN interfaces and HSRP are configured on the aggregation switches.

Which two features improve STP stability within the network design? (Choose two.)



- A. edge port on access ports
- B. root guard on access ports
- C. access switch pairs explicitly determined to be root and backup root bridges
- D. root guard on the aggregation switch downlinks toward access switches

E. BPDU guard on the aggregation switch downlinks toward access switches

F. BPDU guard on access ports

Answer: ([SHOW ANSWER](#))

**NEW QUESTION: 96**

Which two design solutions ensure sub 50 msec of the convergence time after a link failure in the network? (Choose two)

A. Ti-LFA

B. minimal BGP scan time

C. MPLS-FRR

D. IGP fast hello

E. BFD

Answer: ([SHOW ANSWER](#))

**NEW QUESTION: 97**

Which two statements explain the operation of BFD asynchronous mode? (Choose two.)

A. BFD asynchronous mode without echo packets uses control packets, and BFD asynchronous mode with echo packets does not

B. BFD asynchronous mode with and without echo packets use control packets

C. BFD asynchronous mode with echo packets combines the control packets and echo packets into a single packet

D. BFD asynchronous mode with echo packets uses separate control packets and echo packets

E. BFD asynchronous without echo packets has control packets sent back to the originating router, which echoes the control packet to detect failures

Answer: ([SHOW ANSWER](#))

**NEW QUESTION: 98**

Drag and Drop Question

Top-down network design is a discipline that grew out of the success of structured systems analysis. Its main goal is to represent users' needs more accurately, which are often ignored or misrepresented. Most network systems follow a cyclical set of phases. Drag and drop the phases from the left onto the corresponding activities done during those phases.

**Answer Area**

- Develop the physical design.
- Analyze requirements.
- Develop the logical design.
- Optimize the design.

- document design proposal
- finalize service providers
- securing planning
- protocol behavior

Answer:

**Answer Area**

- Optimize the design.
- Develop the physical design.
- Develop the logical design.
- Analyze requirements.

Explanation:

Analyze requirements / protocol behavior - Understanding how existing protocols behave is a key input when gathering and analysing requirements.

Develop the logical design / security planning - Security policies and mechanisms are defined alongside addressing, routing, and other logical-layer elements.

Develop the physical design / finalize service providers - Selecting links, hardware, and external service providers occurs once the physical topology is being mapped out.  
Optimize the design / document design proposal - After tuning and validating the design, the final step is to produce comprehensive documentation for approval and implementation.

**NEW QUESTION: 99**

Which two application requirements are mandatory for traffic to receive proper treatment when placed in the priority queue? (Choose two.)

- A. intolerance to jitter
- B. TCP-based application
- C. small transactions (HTTP-like behavior)
- D. tolerance to packet loss
- E. WRED drop treatment

**Answer:** ([SHOW ANSWER](#))

**NEW QUESTION: 100**

What are two key design principles when using a hierarchical core-distribution-access network model?  
(Choose two)

- A. The core layer provides server access in a small campus.
- B. The core layer controls access to resources for security
- C. A hierarchical network design facilitates changes
- D. The core layer is designed first, followed by the distribution layer and then the access layer
- E. A hierarchical network design model aids fault isolation

**Answer:** ([SHOW ANSWER](#))

**NEW QUESTION: 101**

Multicast routing is being designed for a company network. The requirements include to design efficiency in the forwarding plane so that traffic is not forwarded toward devices that are not running multicast applications.

Which technology achieves these design goals?

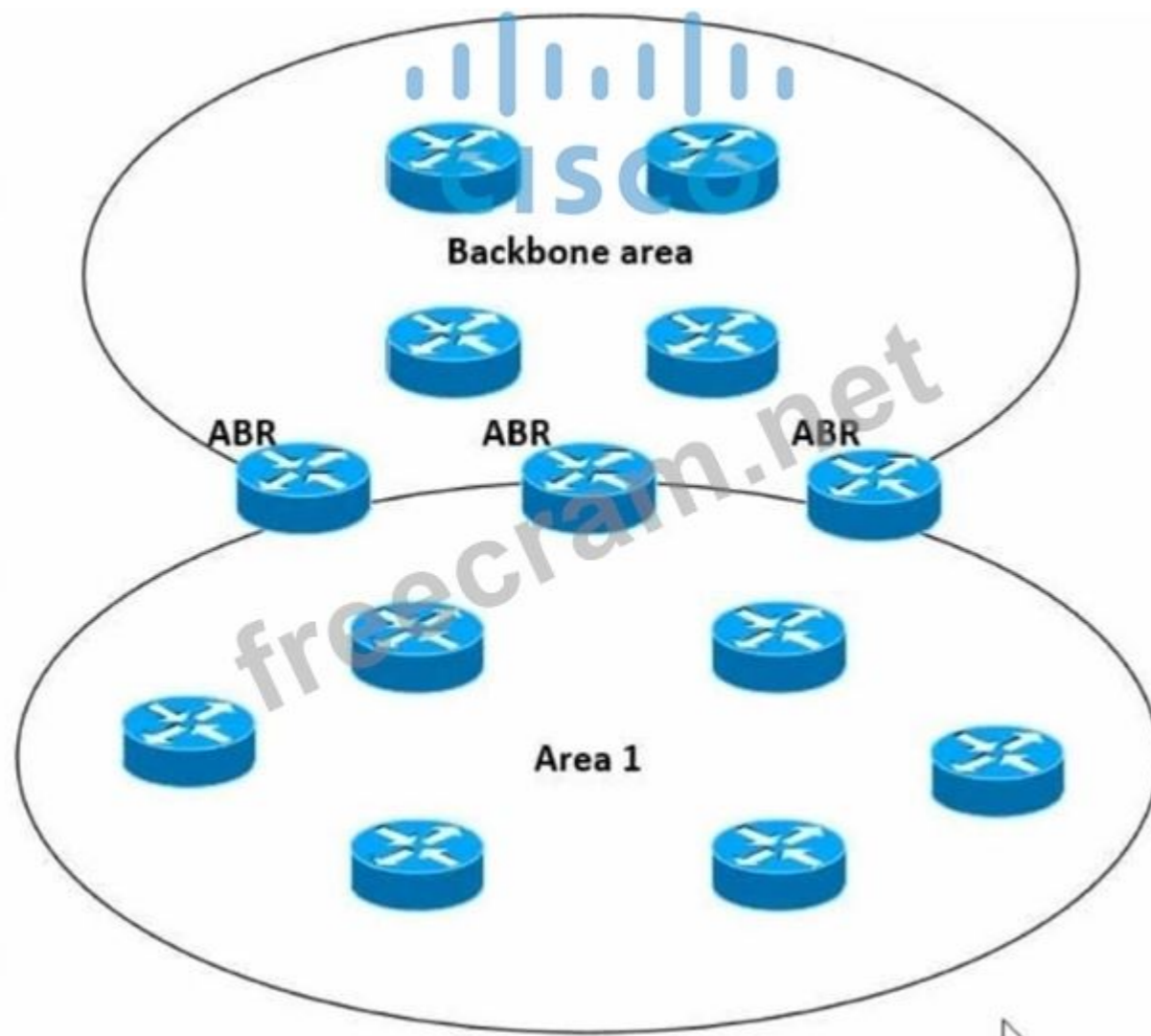
- A. Configure IGMP snooping on the routers.
- B. Configure PIM sparse mode using Auto-RP on the routers.
- C. Configure IGMP snooping on the switches.
- D. Configure PIM sparse mode using BSR on the routers.

**Answer:** ([SHOW ANSWER](#))

IGMP snooping allows switches to listen to IGMP membership reports and only forward multicast traffic to switch ports with receivers subscribed to a multicast group. This ensures forwarding plane efficiency by preventing multicast traffic from being sent to devices not running multicast applications.

**NEW QUESTION: 102**

Refer to the exhibit. Which impact of using three or more ABRs between the backbone area and area 1 is true?



- A. In a large-scale network multiple ABRs can create microloops.
- B. In a large-scale network LSA replication by all ABRs can cause serious scalability issues
- C. Prefixes from the non-backbone area are advertised by one ABR to the backbone
- D. Multiple ABRs reduce the CPU processing on each ABR due to splitting prefix advertisement

Answer: ([SHOW ANSWER](#))

#### NEW QUESTION: 103

What are two advantages of the Agile project management methodology? (Choose two)

- A. brief but detailed feedback loops
- B. well-detailed and reliable budget estimates
- C. extensive documentation
- D. tight and rigid model
- E. creation of shippable enhancements

Answer: ([SHOW ANSWER](#))

Agile emphasizes short, iterative cycles (sprints) that allow teams to receive frequent, detailed feedback from stakeholders and customers, enabling continuous improvement and adaptation throughout the project.

Agile focuses on delivering working, shippable increments of the product at the end of each sprint, ensuring continuous delivery of value and early realization of benefits.

**NEW QUESTION: 104**

When classifying and marking traffic, a recommended design principle is to classify and mark applications as close to their sources as technically and administratively feasible. As the line between enterprises and service providers continues to blur, what ensures interoperability and future expansion?

- A. each application class to its own dedicated queue
- B. QoS policies in hardware rather than software
- C. police traffic flows as close to their source as possible
- D. standards-based DSCP PHB markings

Answer: ([SHOW ANSWER](#))

**NEW QUESTION: 105**

What is a characteristic of a secure cloud architecture model?

- A. multi-factor authentication
- B. limited access to job function
- C. software-defined network segmentation
- D. dedicated and restricted workstations

Answer: ([SHOW ANSWER](#))

**NEW QUESTION: 106**

A network architect in an enterprise is designing a network policy for certain database applications. The goal of the policy is to allow these applications to access the internet directly, whereas other user and network applications that communicate with systems or users outside their own network must be routed through the data center. The focus is on achieving higher availability and a better user experience for the database applications, but switching between different network paths based on performance characteristics must be supported.

Which solution meets these requirements?

- A. Cloud onRamp for SaaS
- B. Cloud onRamp for IaaS
- C. MPLS direct connect
- D. MPLS L3VPN with QoS

Answer: ([SHOW ANSWER](#))

**Valid 400-007 Dumps** shared by EduDump.com for Helping Passing 400-007 Exam! EduDump.com now offer the **newest 400-007 exam dumps**, the EduDump.com 400-007 exam **questions have been updated** and **answers have been corrected** get the **newest** EduDump.com 400-007 dumps with Test Engine here:

<https://www.edudump.com/exams/Cisco/400-007/premium/> (550 Q&As Dumps, **35%OFF** Special Discount Code: **freecram**)

**NEW QUESTION: 107**

Company XYZ, a global content provider, owns data centers on different continents. Their data center design involves a standard three-layer design with a Layer 3-only core. HSRP is used as the FHRP. They require VLAN extension across access switches in all data centers, and they plan to purchase a Layer 2 interconnection between two of their data centers in Europe. In the absence of other business or technical constraints, which termination point is optimal for the layer 2 interconnection?

- A. at the core layer, to offer the possibility to isolate STP domains

- B. at the core layer because all external connections must terminate there for security reasons
- C. at the access layer because the STP root bridge does not need to align with the HSRP active node
- D. at the aggregation layer because it is the Layer 2 to Layer 3 demarcation point

**Answer:** ([SHOW ANSWER](#))

**NEW QUESTION: 108**

A service provider recently migrated to an SD-WAN solution for delivering WAN connections to its customers. One of the main challenges with the SD-WAN deployment is that branch site volume increases every year, which causes management complexity. Which action resolves the issue?

- A. Implement a scalable network management system to manage all sites.
- B. Set up a dedicated team to monitor and provision new customers
- C. Build a service orchestration platform on top of the network controller
- D. Adopt a well-structured SD-WAN service management lifecycle model

**Answer:** ([SHOW ANSWER](#))

**NEW QUESTION: 109**

A healthcare customer requested that SNMP traps must be sent over the MPLS Layer 3 VPN service. Which protocol must be enabled?

- A. SSH
- B. Syslog TLS
- C. SNMPv2
- D. SNMPv3
- E. Syslog

**Answer:** ([SHOW ANSWER](#))

**NEW QUESTION: 110**

Traditionally, networks handled static web pages, e-mail, and routine client/server traffic. Today, enterprise networks must handle more sophisticated types of network applications that include voice and video. Applications place increasing demands on IT infrastructures as they evolve into highly visible services that represent the face of the business to internal and external audiences.

The large amount and variety of data requires that the modern network be aware of the content carried across it to optimally handle that content.

Which service provide this intelligence?

- A. network infrastructure services
- B. centralized network services
- C. application networking services
- D. modular infrastructure services

**Answer: C** ([LEAVE A REPLY](#))

Application networking services provide content awareness in the network, enabling optimization and control for applications such as voice, video, and other advanced services. This intelligence allows the network to handle application demands efficiently and align with business needs.

**NEW QUESTION: 111**

Which mechanism enables small, unmanaged switches to plug into ports of access switches without risking switch loops?

- A. PortFast
- B. UDLD
- C. Root guard
- D. BPDU guard

Answer: ([SHOW ANSWER](#))

#### NEW QUESTION: 112

You have been asked to design a remote access VPN solution to support up to 2000 devices.

You must ensure that only corporate assets are allowed to connect to the VPN, and users must authenticate to gain access of their based on their user role. Users must use a password that they are already using to access existing applications. A user may not always use the same device to access the VPN.

Which two options combined meet the requirements? (Choose two)

- A. Deploy a central authentication directory that users can be authenticated and authorized against
- B. Deploy a SSL VPN solution
- C. Deploy certificates that are unique to each device
- D. Use local usernames and passwords on the VPN device
- E. Deploy certificates that are unique to each user
- F. Deploy an IPsec VPN solution

Answer: ([SHOW ANSWER](#))

#### NEW QUESTION: 113

A BGP route reflector in the network is taking longer than expected to coverage during large network changes.

Troubleshooting shows that the router cannot handle all the TCP acknowledgements during route updates.

Which action can be performed to tune the device performance?

- A. Decrease the size of the small buffers.
- B. Increase the size of the hold queue.
- C. Increase the size of the large buffers.
- D. Increase the keepalive timers for each BGP neighbor.

Answer: ([SHOW ANSWER](#))

#### NEW QUESTION: 114

An engineer is designing the QoS strategy for Company XYZ. Based on initial analysis, a lot of scavenger type of traffic is traversing the network's 20Mb Internet link toward the service provider. The new design must use a QoS technique that limits scavenger traffic to 2 Mbps, which helps avoid oversubscription of the link during times of congestion.

Which QoS technique can be used to facilitate this requirement?

- A. LLQ
- B. class-based traffic shaping
- C. CBWFQ
- D. class-based traffic policing

Answer: ([SHOW ANSWER](#))

#### NEW QUESTION: 115

Company XYZ is a large US-based online retailer that is preparing for a major sale scheduled for the holiday season. Large volumes of dynamic workloads are expected, which are time sensitive and seasonal. In anticipation of the surge in data, they are re-architecting their workload management.

Which two technical considerations for service placement of workloads should be considered?

(Choose two.)

- A. service level agreement
- B. business asset control
- C. performance
- D. time to market
- E. workload elasticity

**Answer:** ([SHOW ANSWER](#))

Performance must be considered to ensure workloads handle the seasonal surge in demand without degradation.

Workload elasticity is critical for scaling resources dynamically up or down based on peak demand during the holiday season.

#### **NEW QUESTION: 116**

Which two statements describe the hierarchical LAN design model? (Choose two)

- A. It is a well-understood architecture that provides scalability
- B. It is the most optimal design but is highly complex
- C. It provides a simplified design
- D. It is the best design for modern data centers
- E. Changes, upgrades, and new services can be introduced in a controlled and staged manner

**Answer:** ([SHOW ANSWER](#))

#### **NEW QUESTION: 117**

Company XYZ wants to use the FCAPS ISO standard for network management design.

The focus of the design should be to monitor and keep track of any performance issues by continuously collecting and analyzing statistical information to monitor, correct, and optimize any reduced responsiveness across the network.

Which layer accomplishes this design requirement?

- A. fault management
- B. accounting management
- C. performance management
- D. security management

**Answer:** ([SHOW ANSWER](#))

#### **NEW QUESTION: 118**

Which two factors provide multifactor authentication for secure access to applications and data, no matter where the users are or which devices they are on? (Choose two.)

- A. persona-based
- B. power-based
- C. pull-based
- D. possession-based
- E. push-based

**Answer:** ([SHOW ANSWER](#))

**NEW QUESTION: 119**

Company XYZ has two offices connected to each other over unequal redundant paths and they are running OSPF as the routing protocol. An external network architect recommends BFD for OSPF. Which effect would BFD have in the case of a link failure?

- A. It would drop the dead per detection time to a single hello
- B. It would detect that the neighbor is down in a subsecond manner
- C. It would keep an alternate path ready in case of a link failure
- D. It would optimize the route summarization feature of OSPF

Answer: [\(SHOW ANSWER\)](#)

**NEW QUESTION: 120**

Refer to the exhibit. An engineer is designing the network for a multihomed customer running in AS 111 does not have any other ASs connected to it. Which technology is more comprehensive to use in the design to make sure that the AS is not being used as a transit AS?



- A. Configure the AS-set attribute to allow only routes from AS 111 to be propagated to the neighbor ASs.

- B. Use the local preference attribute to configure your AS as a "non-transit" AS.
- C. include an AS path access list to send routes to the neighboring ASs that only have AS 111 in the AS path field.
- D. Include a prefix list to only receive routes from neighboring ASs.

**Answer:** ([SHOW ANSWER](#))

Using an AS path access list helps ensure that only routes originating from the customer AS (AS 111) are advertised to another ASs. By filtering routes with an empty AS path field, AS 111 can prevent being used as a transit AS by disallowing routes coming from another ASs. This is a more comprehensive approach compared to other methods in the options provided.

#### **NEW QUESTION: 121**

An engineer must design a network for a company that uses OSPF LFA to reduce loops. Which type of loop would be reduced by using this design?

- A. STP
- B. REP
- C. micro loops
- D. DTP

**Answer:** ([SHOW ANSWER](#))

**Valid 400-007 Dumps** shared by EduDump.com for Helping Passing 400-007 Exam! EduDump.com now offer the **newest 400-007 exam dumps**, the EduDump.com 400-007 exam **questions have been updated** and **answers have been corrected** get the **newest** EduDump.com 400-007 dumps with Test Engine here:

<https://www.edudump.com/exams/Cisco/400-007/premium/> (550 Q&As Dumps, **35%OFF** Special Discount Code: **freecram**)

#### **NEW QUESTION: 122**

Network designers often segment networks by creating modules for various reasons Sometimes however a network can be unintentionally segmented For instance, if the only way to connect a remote site to a headquarters or regional site is to connect them both to the public Internet the corporate network is now unintentionally segmented Which of the following option can be used to desegment the network in this situation?

- A. Configure little to no control data plane policy
- B. Block specific sources from reaching specific destinations
- C. Mark traffic for special handling through quality of service
- D. Build virtual networks that pass over the network

**Answer:** ([SHOW ANSWER](#))

#### **NEW QUESTION: 123**

An enterprise service provider is designing the network for a customer who runs a video application in both a centralized and distributed fashion The team has looked at the following parameters

- \*The available bandwidth for branches and the associated cost
- \*Video resource cost
- \*Usage patterns at hub-and-spoke sites.
- \*Call agent bridge selection algorithm

Which key piece of information is missing and needs to be taken into consideration in order to determine the correct resource allocation model?

- A. type of video resources

- B. network management and monitoring
- C. transport protocol and traffic engineering
- D. video traffic jitter and delay

Answer: ([SHOW ANSWER](#))

**NEW QUESTION: 124**

You are designing a large-scale DMVPN network with more than 500 spokes using EIGRP as the IGP protocol.

Which design option eliminates potential tunnel down events on the spoke routers due to the holding time expiration?

- A. Increase the hold queue on the tunnel interface of the spoke routers
- B. Increase the hold queue on the physical interface of the hub router.
- C. Increase the hold queue on the tunnel interface of the hub router
- D. Apply QoS for pak\_priority class
- E. Increase the hold queue on the physical interface of the spoke routers.

Answer: ([SHOW ANSWER](#))

**NEW QUESTION: 125**

Company XYZ wants to prevent switch loops caused by unidirectional point-point-link condition on Rapid PVST + and MST. Which technology can be used in the design to meet this requirement?

- A. STP bridge assurance
- B. MSTP
- C. TRILL
- D. STP BPDU guard

Answer: ([SHOW ANSWER](#))

**NEW QUESTION: 126**

A service provider hires you to design its new managed CE offering to meet these requirements

- \* The CEs cannot run a routing protocol with the PE
- \* Provide the ability for equal or unequal ingress load balancing in dual-homed CE scenarios.
- \* Provide support for IPv6 customer routes
- \* Scale up to 250.000 CE devices per customer.
- \* Provide low operational management to scale customer growth.
- \* Utilize low-end (inexpensive) routing platforms for CE functionality.

Which tunneling technology do you recommend?

- A. DMVPN
- B. LISP
- C. point-to-point GRE
- D. FlexVPN

Answer: ([SHOW ANSWER](#))

**NEW QUESTION: 127**

A large enterprise plans to enable direct internet access for specific SaaS applications from its remote branch sites by using local broadband internet circuits. Only traffic to specific cloud SaaS applications will be allowed direct internet access and all other internet-bound traffic will follow its usual path. The customer wants to leverage its existing SD-WAN solution and cloud provider integration. Which action must be taken on the remote branch routers to meet the requirements?

- A. Configure IPsec to the cloud provider.
- B. Define a policy-based redirect to the applications.
- C. Implement direct connect for site connectivity.
- D. Enable Cloud OnRamp for the branch sites.

**Answer:** ([SHOW ANSWER](#))

#### NEW QUESTION: 128

Which two control plane policer designs must be considered to achieve high availability? (Choose two.)

- A. Control plane policers require that adequate protocols overhead are factored in to allow protocol convergence.
- B. Control plane policers are really needed only on externally facing devices.
- C. Control plane policers must be processed before a forwarding decision is made.
- D. Control plane policers are enforced in hardware to protect the software path, but they are hardware platform dependent in terms of classification ability.
- E. Control plane policers can cause the network management systems to create false alarms.

**Answer:** ([SHOW ANSWER](#))

#### NEW QUESTION: 129

Company XYZ is designing the network for IPv6 security and they have these design requirements:

- A switch or router must deny access to traffic from sources with addresses that are correct, but are topologically incorrect
- Devices must block Neighbor Discovery Protocol resolution for destination addresses that are not found in the binding table.

Which two IPv4 security features are recommended for this company? (Choose two)

- A. IPv6 DHCP Guard
- B. IPv6 Source Guard
- C. IPv6 Destination Guard
- D. IPv6 Prefix Guard
- E. IPv6 RA Guard

**Answer:** ([SHOW ANSWER](#))

IPv6 source guard is an interface feature between the populated binding table and data traffic filtering. This feature enables the device to deny traffic when it is originated from an address that is not stored in the binding table.

The IPv6 Destination Guard feature works with IPv6 neighbor discovery to ensure that the device performs address resolution only for those addresses that are known to be active on the link. It relies on the address glean functionality to populate all destinations active on the link into the binding table and then blocks resolutions before they happen when the destination is not found in the binding table.

The IPv6 Prefix Guard feature works within the IPv6 Source Guard feature, enabling the device to deny traffic originated from nontopologically correct addresses.

[https://www.cisco.com/c/en/us/td/docs/ios-xml/ios/ipv6\\_fhsec/configuration/x6-16/ip6f-xe-16-book/ip6-src-guard.html](https://www.cisco.com/c/en/us/td/docs/ios-xml/ios/ipv6_fhsec/configuration/x6-16/ip6f-xe-16-book/ip6-src-guard.html)

#### NEW QUESTION: 130

Which three items do you recommend for control plane hardening of an infrastructure device? (Choose three.)

- A. redundant AAA servers

- B. to enable unused .services
- C. SNMPv3
- D. routing protocol authentication
- E. Control Plane Policing
- F. warning banners

**Answer: ([SHOW ANSWER](#))**

**NEW QUESTION: 131**

Which design consideration is valid when you contrast fabricPath and trill?

- A. FabricPath permits active-active mode, but TRILL supports only active-standby mode.
- B. FabricPath Permits ECMP, but TRILL does not
- C. FabricPath uses IS-IS, but TRILL uses VxLAN
- D. FabricPath permits active-active FHRP and TRILL support anycast gateway.

**Answer: ([SHOW ANSWER](#))**

**NEW QUESTION: 132**

A Tier-3 Service Provider is evolving into a Tier-2 Service Provider due to the amount of Enterprise business it is receiving.

The network engineers are re-evaluating their IP/MPLS design considerations in order to support duplicate/overlapping IP addressing from their Enterprise customers within each Layer3 VPN.

Which concept would need to be reviewed to ensure stability in their network?

- A. Assigning unique Route Distinguishers
- B. Assigning unique IP address space for the Enterprise NAT/Firewalls
- C. Assigning unique Route Target ID'S
- D. Assigning unique VRF ID's to each L3VPN

**Answer: ([SHOW ANSWER](#))**

**NEW QUESTION: 133**

A small organization of 20 employees is looking to deliver a network design service for modernizing customer networks to support advanced solutions:

- Project scope and weekly progress should be visualized by the management.
- Always consider feedback and make changes accordingly during the project.
- Should consider flexibility to change scope at the point of time.

Which project methodology meets the requirements and have the least impact on the outcome?

- A. LEAN
- B. Scrum
- C. Kanban
- D. Six-Sigma

**Answer: ([SHOW ANSWER](#))**

**NEW QUESTION: 134**

In the wake of a security compromise incident where the internal networks were breached by an outside attacker at the perimeter of the infrastructure, an enterprise is now evaluating potential measures that can help protect against the same type of incident in the future. What are two design options that can be employed? (Choose two)

- A. microzoning
- B. microperimeters
- C. domain fencing
- D. segmentation
- E. virtualization

**Answer:** ([SHOW ANSWER](#))

**NEW QUESTION: 135**

An enterprise campus is adopting a network virtualization design solution with these requirements It must include the ability to virtualize the data plane and control plane by using VLANs and VRFs It must maintain end-to-end logical path transport separation across the network resources available grouped at the access edge.

Which two primary models can this network virtualization design be categorized? (Choose two)

- A. Group virtualization
- B. Path isolation
- C. Services virtualization
- D. Session isolation
- E. Edge isolation

**Answer:** ([SHOW ANSWER](#))

**NEW QUESTION: 136**

An enterprise requires MPLS connected branches to access cloud-based Microsoft 365 services over an SD-WAN solution. Internet access is available only at dual regional hub sites that are connected to the MPLS network.

Which connectivity method provides an optimum access method to the cloud- based services If one ISP suffers loss or latency?

- A. Cloud onRamp gateway site
- B. Cloud onRamp SWG
- C. Cloud onRamp
- D. Cloud onRamp SaaS

**Answer:** ([SHOW ANSWER](#))

Cloud OnRamp gateway site is only one of a few method to optimise SAAS connectivity within a SDWAN implementation. the overarching solution is 'Cloud OnRmap SAAS'. with the options provided D is the most accurate answer

<https://www.cisco.com/c/en/us/td/docs/routers/sdwan/configuration/cloudonramp/vedge-20-x/cloud-onramp-book-vedge/cor-saas.html#common-scenarios-cor-saas-b>

**Valid 400-007 Dumps** shared by EduDump.com for Helping Passing 400-007 Exam! EduDump.com now offer the **newest 400-007 exam dumps**, the EduDump.com 400-007 exam **questions have been updated** and **answers have been corrected** get the **newest** EduDump.com 400-007 dumps with Test Engine here:

<https://www.edudump.com/exams/Cisco/400-007/premium/> (550 Q&As Dumps, **35%OFF** Special Discount Code: **freecram**)

**NEW QUESTION: 137**

What advantage of placing the IS-IS layer 2 flooding domain boundary at the core Layer in a three-layer hierarchical network is true?

- A. The Layer 1 and Layer 2 domains can easily overlap
- B. The Layer 2 domain is contained and more stable
- C. It can be applied to any kind of topology
- D. It reduces the complexity of the Layer 1 domains

Answer: ([SHOW ANSWER](#))

**NEW QUESTION: 138**

A green data center is being deployed and a design requirement is to be able to readily scale server virtualization. Which IETF standard technology can provide this requirement?

- A. unified fabric
- B. Transparent Interconnection of Lots of Links
- C. data center bridging
- D. fabric path

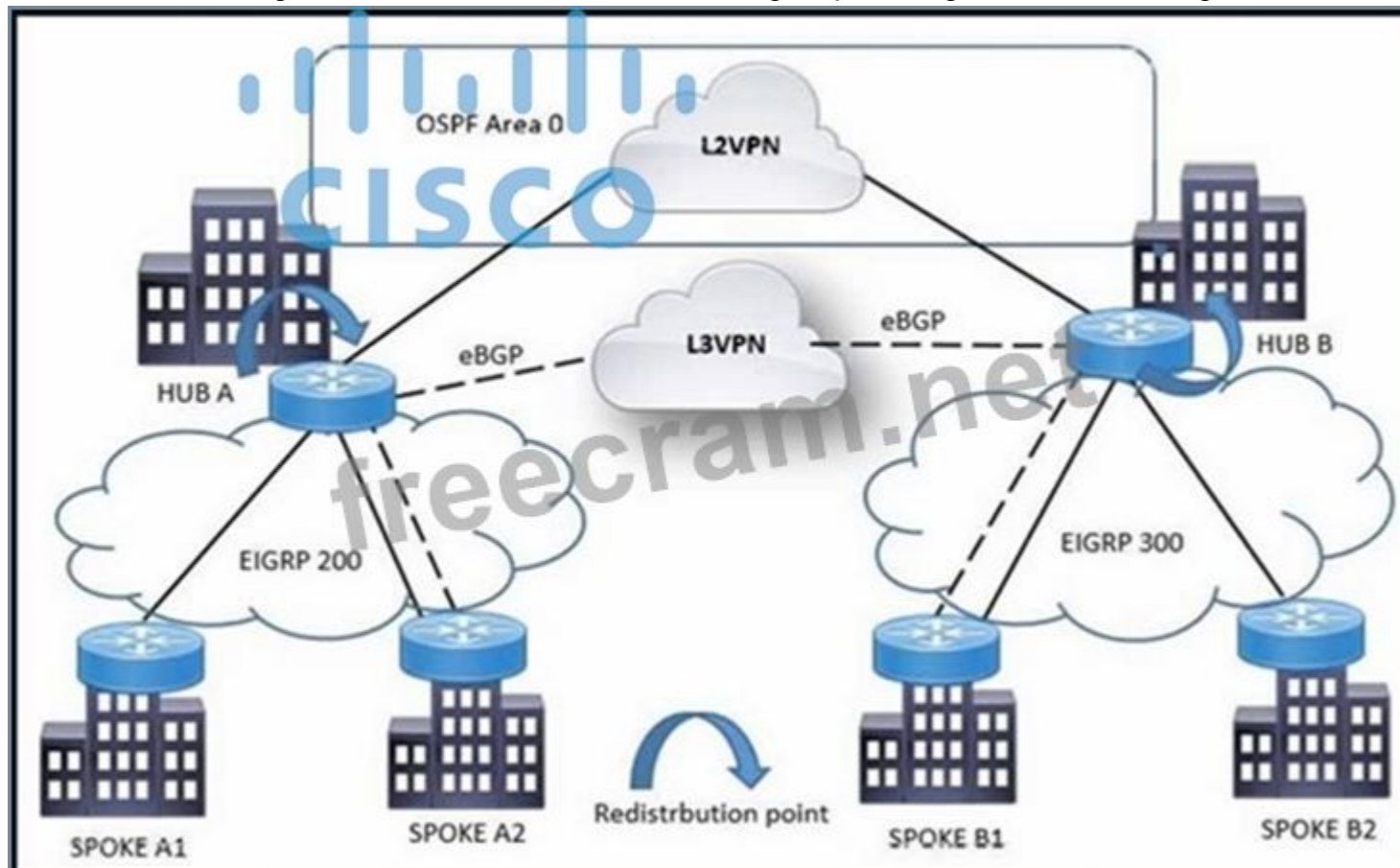
Answer: ([SHOW ANSWER](#))

**NEW QUESTION: 139**

Refer to the exhibit. A customer network design team is planning a migration from a legacy TDM- based L2VPN to an MPLS-based L3VPN. Migration is planned in a phased approach:

- OSPF backbone Link between HUB A and HUB B sites to be migrated to eBGP.
- Spoke A2 and Spoke B1 will be migrated to the L3VPN.

Which solution design can be considered to avoid routing loops during backbone link migration?



- A. Redistribute EIGRP 200 and 300 with low cost into BGP.
- B. OSPF backbone area advertises summarized routes to hub.
- C. Enable route-filtering on OSPF backbone routers for spoke traffic.
- D. Advertise low AD value for transit traffic on hub sites.

**Answer:** ([SHOW ANSWER](#))

Filtering spoke prefixes on the temporary OSPF backbone between HUB A and HUB B prevents those routes from circulating simultaneously via OSPF and the new eBGP/L3VPN path, removing dual-path feedback and avoiding routing loops during the phased migration.

#### **NEW QUESTION: 140**

A software-defined network can be defined as a network with an API that allows applications to understand and react to the state of the network in near real time. A vendor is building an SDN solution that exposes an API to the RIB and potentially the forwarding engine directly. The solution provides off-box processes with the capability to interact with the routing table in the same way as a distributed routing process. Which SDN framework model does the solution use?

- A. distributed
- B. hybrid
- C. replace
- D. augmented

**Answer:** ([SHOW ANSWER](#))

#### **NEW QUESTION: 141**

An enterprise has identified these causes for inefficient CAPEX spending:

- CAPEX planning is driven by technology and not by business objectives.
- The CAPEX planning team lacks the data it needs to perform due diligence tasks.
- The organizational structure lacks sufficient accountability and incentives.

Which corporate cultural change contributes to improving the effectiveness of CAPEX spending?

- A. Marketing and product management divisions must reduce their CAPEX budgets significantly to drive the change.
- B. CxO-level staff must have a full technical understanding but they should not trust their technical leaders fully.
- C. Adopt new organizational models that promote real accountability for ROI, not just revenue, EBITDA, and cash.
- D. Build a financial control function that delivers high-quality reports on operational expenses for business insight and financial reporting.

**Answer:** ([SHOW ANSWER](#))

#### **NEW QUESTION: 142**

You want to add 900 VLANs to the existing 90 VLANs on a data center. Which two spanning-tree concerns must you consider? (Choose two )

- A. STP is increased by a factor of 10 convergence time
- B. BPDU does not support 990 VLANs
- C. The diameter of the STP topology is increased.
- D. The PVST+ increases CPU utilization
- E. To add 990 VLANs to the switching hardware reserved VLANs requires you to use extended VLAN

Answer: ([SHOW ANSWER](#))

**NEW QUESTION: 143**

Drag and Drop Question

The customer's network manager asked for some key points to use in a presentation on overlay/underlay features and responsibilities. Drag and drop the features or responsibilities from the left onto the corresponding groups on the right in no particular order.

**Answer Area**

- hardware orchestrated
- offloaded from delivery of packets
- virtual network
- physical infrastructure
- responsible for delivery of packets
- more scalable
- software orchestrated
- less scalable

**Underlay**

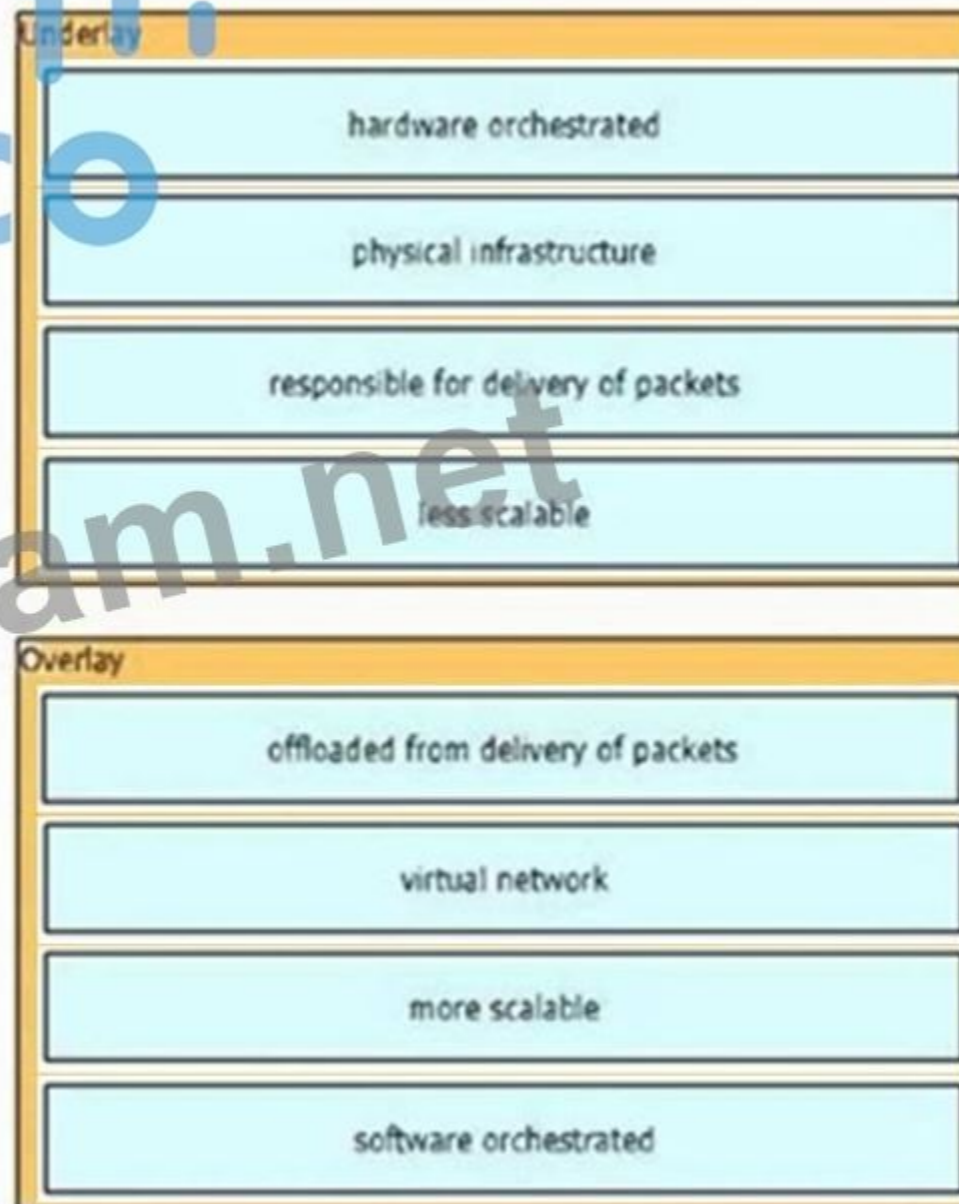
- component/feature
- component/feature
- component/feature
- component/feature

**Overlay**

- component/feature
- component/feature
- component/feature
- component/feature

Answer:

## Answer Area



### NEW QUESTION: 144

One of the key components in an SDN-controlled network is the ability to have a piece of software that can manipulate the devices in the network and also provide the intelligent and predictable behavior that is expected. Which component provides this feature?

- A. SDN over applications
- B. SDN via overlays
- C. SDN via device APIs
- D. SDN via controller APIs

**Answer: D (LEAVE A REPLY)**

In Software Defined Networking (SDN), the controller is the central component that communicates with the data plane (network devices like switches and routers) to enforce policies and make decisions. The controller APIs allow applications to interact with the controller to define desired network behavior.

Controller APIs (also called northbound APIs) expose the controller's capabilities to external applications, allowing intelligent and programmable control over the network. This enables automation, orchestration, and policy-driven network management.

**NEW QUESTION: 145**

Drag and Drop Question

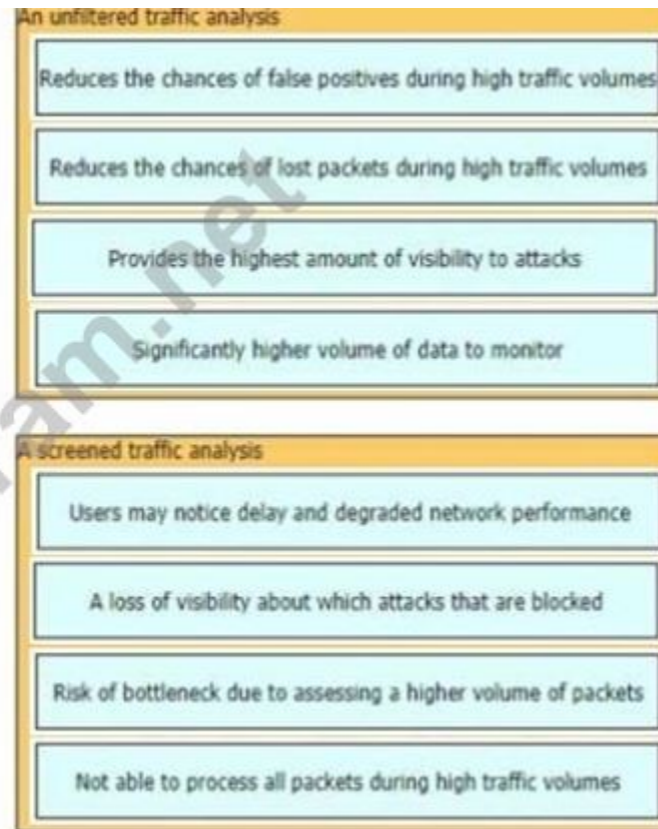
When a detection system for protecting a network from threats sourced from the Internet is designed there are two common deployment methods, where the system is placed differently relative to the perimeter firewall:

- An unfiltered detection system examines the raw Internet data streams before it reaches the firewall
- A screened detection solution which monitors traffic that is allowed through the firewall

Both have its advantages and disadvantages drag and drop the characteristics on the left to the corresponding category on the right in no particular order.

Reduces the chances of false positives during high traffic volumes	An unfiltered traffic analysis
Reduces the chances of lost packets during high traffic volumes	characteristic
Provides the highest amount of visibility to attacks	characteristic
Users may notice delay and degraded network performance	characteristic
A loss of visibility about which attacks that are blocked	characteristic
Significantly higher volume of data to monitor	A screened traffic analysis
Risk of bottleneck due to assessing a higher volume of packets	characteristic
Not able to process all packets during high traffic volumes	characteristic

**Answer:**



**NEW QUESTION: 146**

Which main IoT migration aspect should be reviewed for a manufacturing plant?

- A. Ethernet Switches
- B. Wi-Fi Infrastructure
- C. Sensors
- D. Security
- E. Applications

Answer: ([SHOW ANSWER](#))

**NEW QUESTION: 147**

You are designing the routing design for two merging companies that have overlapping IP address space. Which of these must you consider when developing the routing and NAT design?

- A. Local to global NAT translation is done before policy-based routing
- B. Local to global NAT translation is done after routing
- C. Global to local NAT translation is done after policy-based routing.
- D. Global to local NAT translation is done before routing.

Answer: ([SHOW ANSWER](#))

**NEW QUESTION: 148**

A network security team uses a purpose-built tool to actively monitor the campus network, applications, and user activity. The team also analyzes enterprise telemetry data from IPFIX data records that are received from devices in the campus network. Which action can be taken based on the augmented data?

- A. integration with an incident response plan

- B. asset identification and grouping decisions
- C. adoption and improvement of threat-detection response
- D. reduction in time to detect and respond to threats

Answer: ([SHOW ANSWER](#))

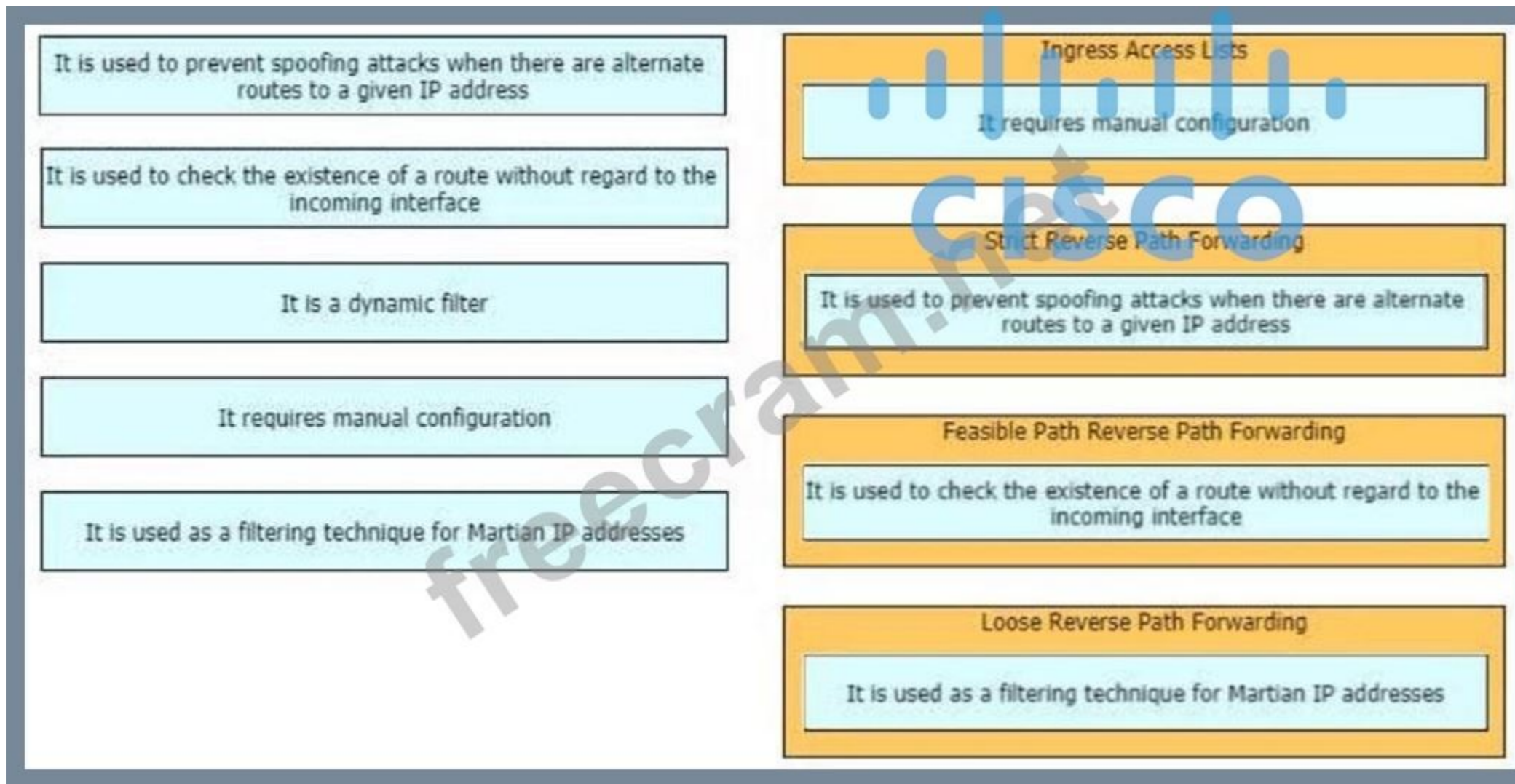
**NEW QUESTION: 149**

Drag and Drop Question

Drag and drop the design characteristics from the left onto the correct network filter techniques on the right. Not all options are used.

It is used to prevent spoofing attacks when there are alternate routes to a given IP address	Ingress Access Lists target 1
It is used to check the existence of a route without regard to the incoming interface	Strict Reverse Path Forwarding target 2
It is a dynamic filter	Feasible Path Reverse Path Forwarding target 3
It requires manual configuration	Loose Reverse Path Forwarding target 4
It is used as a filtering technique for Martian IP addresses	

Answer:



**NEW QUESTION: 150**

Which three components are part of the foundational information security principles of the CIA triad?  
(Choose three.)

- A. confidentiality
- B. authorization
- C. availability
- D. identification
- E. cryptography
- F. integrity

Answer: ([SHOW ANSWER](#))

**NEW QUESTION: 151**

Which architecture does not require an explicit multicast signaling protocol, such as PIM or P2MP, to signal the multicast state hop-by-hop, but instead uses a link state protocol to advertise the multicast forwarding state?

- A. Binary indexed explicit routing
- B. Bit indexed explicit replication
- C. Bi-directional implicit replication
- D. Binary intermediate enhanced routing

Answer: ([SHOW ANSWER](#))

Valid 400-007 Dumps shared by EduDump.com for Helping Passing 400-007 Exam! EduDump.com now offer the **newest 400-007 exam dumps**, the EduDump.com 400-007 exam **questions have been updated** and **answers have been corrected** get the **newest** EduDump.com 400-007 dumps with Test Engine here:

<https://www.edudump.com/exams/Cisco/400-007/premium/> (550 Q&As Dumps, **35%OFF** Special Discount Code: **freecram**)

**NEW QUESTION: 152**

You are designing a network running both IPv4 and IPv6 to deploy QoS.

Which consideration is correct about the QoS for IPv4 and IPv6?

- A. IPv4 and IPv6 traffic types can use queuing mechanisms such as LLQ, PQ and CQ.
- B. IPv6 packet classification is only available with process switching, whereas IPv4 packet classification is available with both process switching and CEF.
- C. Different congestion management mechanisms need to be used for IPv4 and IPv6 traffic types
- D. IPv6 and IPv4 traffic types can use a single QoS policy to match both protocols

Answer: ([SHOW ANSWER](#))

**NEW QUESTION: 153**

With SDN, network administrators can automate many tasks, such as configuring network policies, traffic flows, and security settings. This automation can significantly reduce the time and effort required to manage and maintain networks.

Which focus area of task automation can the network engineers use to greatly reduce manual effort for everyday network changes?

- A. training and enablement
- B. individual activities
- C. on demand
- D. end-to-end outcome

Answer: ([SHOW ANSWER](#))

End-to-end outcome automation focuses on automating entire workflows rather than individual tasks, which greatly reduces manual effort and ensures consistency in everyday network changes.

**NEW QUESTION: 154**

A network security team observes phishing attacks on a user machine from a remote location.

The organization has a policy of saving confidential data on two different systems using different types of authentication. What is the next step to control such events after the security team verifies all users in Zero Trust modeling?

- A. Assess real-time security health of devices
- B. Enforce risk-based and adaptive access policies
- C. Ensure trustworthiness of devices
- D. Apply a context-based network access control policy for users

Answer: ([SHOW ANSWER](#))



[https://www.cisco.com/c/dam/global/en\\_ca/assets/pdfs/zero-trust-cisco-connect-vancouver-2020.pdf](https://www.cisco.com/c/dam/global/en_ca/assets/pdfs/zero-trust-cisco-connect-vancouver-2020.pdf)

**NEW QUESTION: 155**

A company uses equipment from multiple vendors in a data center fabric to deliver SDN, enable maximum flexibility, and provide the best return on investment. Which YANG data model should be adopted for comprehensive features to simplify and streamline automation for the SDN fabric?

- A. OpenConfig
- B. proprietary
- C. IETF
- D. native

**Answer: (SHOW ANSWER)**

**NEW QUESTION: 156**

One of the approaches used in cloud bursting scenarios is distributed load-balanced, which operate the workloads in tandem between a public cloud and a data center. In which way can the characteristics of distributed load-balancing be described?

- A. Useful for testing and proof-of-concept projects
- B. Useful for large but temporary cloud deployments
- C. Simultaneously provisions cloud resources
- D. Usually uses cloud APIs for communication.

**Answer: (SHOW ANSWER)**

**NEW QUESTION: 157**

Which two protocols are used by SDN controllers to communicate with switches and routers?

(Choose two.)

- A. Open vSwitch Database
- B. OpenFlow
- C. NetFlow
- D. NetFlash
- E. OpenFlash

Answer: ([SHOW ANSWER](#))

**NEW QUESTION: 158**

Company XYZ has multiple production units and marketing departments across the region. The current network is a mixture of point-to-point links and MPLS Layer 3 VPN service from the provider. The Info-Sec team has suggested to isolate production traffic end-to-end with an encryption over the transport network to comply with the HIPAA standard.

Which solution must be used in their design if Company XYZ wants a quick roll out?

- A. GETVPN can be implemented over the MPLS provider, which provides a payload encryption without the overhead of the tunnelling
- B. VRF-Lite can be implemented toward the downstream network and VRF-based tunnels combined with IPsec can be implemented over the service provider
- C. IPsec point-to-point tunnels over the MPLS and point-to-point links provide an isolated and encrypted packet end-to-end
- D. A firewall can be placed centrally to filter out the traffic based on required ports.

Answer: ([SHOW ANSWER](#))

**NEW QUESTION: 159**

Company XYZ wants to use the FCAPS ISO standard for network management design. The focus of the design should be to minimize network outages by employing a set of procedures and activities to detect and isolate network issues and the appropriate corrective actions to overcome current issues and prevent them from occurring again. Which layer accomplishes this design requirement?

- A. performance management
- B. security management
- C. accounting management
- D. fault management

Answer: ([SHOW ANSWER](#))

**NEW QUESTION: 160**

Company XYZ runs OSPF in their network. A design engineer decides to implement hot-potato routing architecture.

How can this implementation be achieved?

- A. Redistribute the external prefixes onto OSPF and ensure that the total metric calculation includes external internal values.
- B. Enable OSPF load-balancing over unequal cost path.
- C. Enable iBGP and apply prepend to ensure all prefixes will have the same length of the AS path attribute value.
- D. Redistribute the external prefixes onto OSPF and ensure the total metric calculation includes only the ext value and the value is the same in all ASBRs.

Answer: ([SHOW ANSWER](#))

**NEW QUESTION: 161**

Which two impacts of adding the IP event dampening feature to a network design are true?

(Choose two.)

- A. It protects against routing loops.
- B. It reduces the utilization of system processing resources.
- C. It switches traffic immediately after a link failure.
- D. It improves overall network stability.
- E. It speeds up link failure detection.

**Answer:** ([SHOW ANSWER](#))

#### **NEW QUESTION: 162**

You are a network designer and you must ensure that the network you design is secure.

How do you plan to prevent infected devices on your network from sourcing random DDoS attacks using forged source address?

- A. unicast RPF strict mode
- B. unicast RPF loose mode
- C. ACL filtering by destination
- D. ACL based forwarding

**Answer:** ([SHOW ANSWER](#))

#### **NEW QUESTION: 163**

Which three elements help network designers to construct secure systems that protect information and resources (such as devices, communication, and data) from unauthorized access, modification, inspection, or destruction? (Choose three.)

- A. reliability
- B. serviceability
- C. availability
- D. scalability
- E. confidential
- F. integrity

**Answer:** ([SHOW ANSWER](#))

#### **NEW QUESTION: 164**

You are tasked to design a QoS policy for a service provider so they can include it in the design of their MPLS core network. If the design must support an MPLS network with six classes, and CEs will be managed by the service provider, which QoS policy should be recommended?

- A. map DSCP bits into the Exp field
- B. map IP precedence bits into the DSCP field
- C. map IP CoS bits into the IP Precedence field
- D. map flow-label bits into the Exp field

**Answer:** ([SHOW ANSWER](#))

#### **NEW QUESTION: 165**

Company XYZ has two routing domains in their network EIGRP and OSPF. The company wants to provide full reachability between the two domains by implementing redistribution on a router running both protocols. They need to design the redistribution in a way that the OSPF routers will see link costs added to external routes. How must the redistribution strategy be designed for this network?

- A. Redistribute using metric type 2 into OSPF
- B. Redistribute using metric type 1 into OSPF
- C. Redistribute using metric type 2 into EIGRP
- D. Redistribute using metric type 1 into EIGRP

**Answer: (SHOW ANSWER)**

<https://www.ciscopress.com/articles/article.asp?p=27573&seqNum=4#:~:text=Routes%20are%20redistributed%20in%20OSPF,shown%20in%20Figure%2014%2D2>

#### **NEW QUESTION: 166**

The internal policy of a private bank mandates that all digital customer data be subject to the laws of the country in which the data is processed. To which concept does this policy relate?

- A. data sovereignty
- B. data compliance
- C. data localization
- D. data ownership

**Answer: (SHOW ANSWER)**

Data sovereignty refers to the principle that digital information is subject to the laws and governance structures of the country where it is collected, stored, or processed. This means that if a private bank's policy mandates that all digital customer data be subject to the laws of the country in which the data is processed, it is addressing data sovereignty concerns.

**Valid 400-007 Dumps** shared by EduDump.com for Helping Passing 400-007 Exam! EduDump.com now offer the **newest 400-007 exam dumps**, the EduDump.com 400-007 exam **questions have been updated** and **answers have been corrected** get the **newest** EduDump.com 400-007 dumps with Test Engine here:

<https://www.edudump.com/exams/Cisco/400-007/premium/> (550 Q&As Dumps, **35%OFF** Special Discount Code: **freecram**)

#### **NEW QUESTION: 167**

The cloud like the Internet is a massive network of independent resources that are designed to be fault tolerant Software components that run in the cloud have no dependencies on the underlying infrastructure which may fail at any time Which two constraints of REST are important when building cloud-based solutions'? (Choose two )

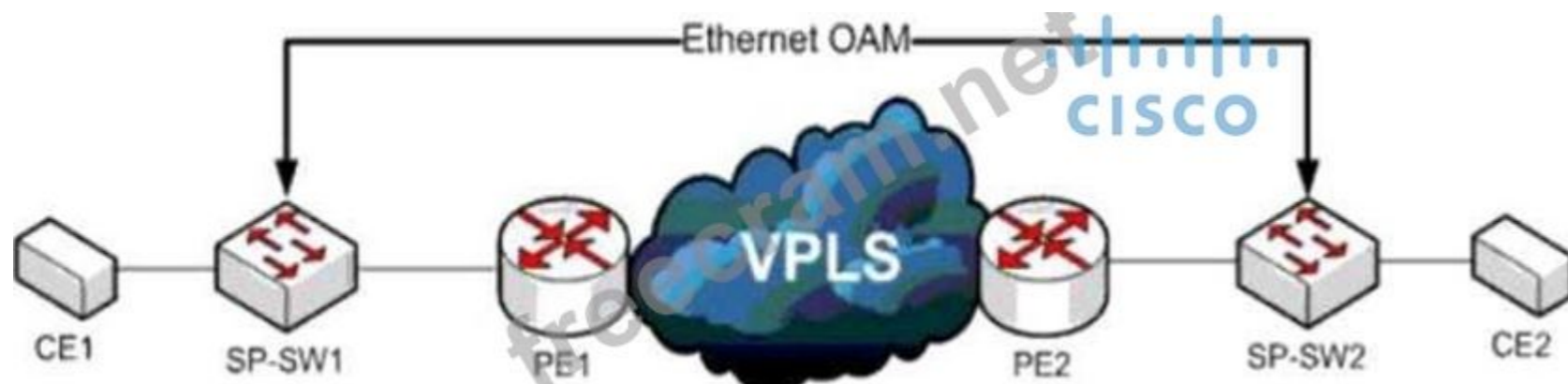
- A. distribution of resources through platforms
- B. self-descriptive messages
- C. migration of resources by representations
- D. hyper-scale as the engine of application state
- E. separation of resources from representation

**Answer: (SHOW ANSWER)**

#### **NEW QUESTION: 168**

Refer to the exhibit A service provider has a requirement to use Ethernet OAM to detect end-to- end connectivity failures between SP-SW1 and SP- SW2.

Which two ways to design this solution are true? (Choose two)



- A. Use upward maintenance endpoints on the SP switches
- B. Enable unicast heartbeat messages to be periodically exchanged between MEPs
- C. Forward LLD PDUs over the VPLS
- D. Enable Connectivity Fault Management on the SP switches
- E. Forward E-LMI PDUs over VPLS

Answer: ([SHOW ANSWER](#))

#### NEW QUESTION: 169

According to the CIA triad principles for network security design, which principle should be priority for a Zero Trust network?

- A. ensuring that authorized users have high-availability system access from defined zones to defined systems or zones
- B. requirement for data-in-motion encryption and 2FA authentication
- C. categorization of systems, data, and enterprise BYOD assets that are connected to network zones based on individual privacy needs
- D. requirement for data-at-rest encryption for user identification within the VPN termination hardware

Answer: ([SHOW ANSWER](#))

#### NEW QUESTION: 170

Company XYZ needs advice in redesigning their legacy Layer 2 infrastructure. Which technology should be included in the design to minimize or avoid convergence delays due to STP or FHRP and provide a loop-free topology?

- A. Use switch clustering in the access layer.
- B. Use BFD.
- C. Use spanning-tree PortFast.
- D. Use switch clustering in the core/distribution layer.

Answer: ([SHOW ANSWER](#))

#### NEW QUESTION: 171

A network architect is working on the baseline policies dealing with the use of Infrastructure-as-Code within an IT department, and has been requested to present the plan at the monthly management board meeting.

What are two examples of operational aspects of Infrastructure-as-Code that can be highlighted during the presentation? (Choose two.)

- A. telemetry and monitoring
- B. source code management repository
- C. automatic trouble ticketing
- D. API for programmatic control

E. automated workflows

**Answer:** ([SHOW ANSWER](#))

Telemetry and monitoring are key operational aspects that provide visibility into network and service health in an Infrastructure-as-Code model. Automated workflows streamline operations by enforcing consistency and reducing manual intervention in provisioning and configuration.

**NEW QUESTION: 172**

Integrity is the assurance that information is trustworthy and accurate and the consistency, accuracy, and trustworthiness of data must be maintained over its entire lifecycle. What supports integrity?

- A. biometric verification
- B. air-gapped computers
- C. two factor authentication
- D. version checks

**Answer:** ([SHOW ANSWER](#))

Version checks support integrity by ensuring that data has not been altered or corrupted during storage, transfer, or processing. This maintains consistency and trustworthiness across the data lifecycle.

**NEW QUESTION: 173**

Drag and Drop Question

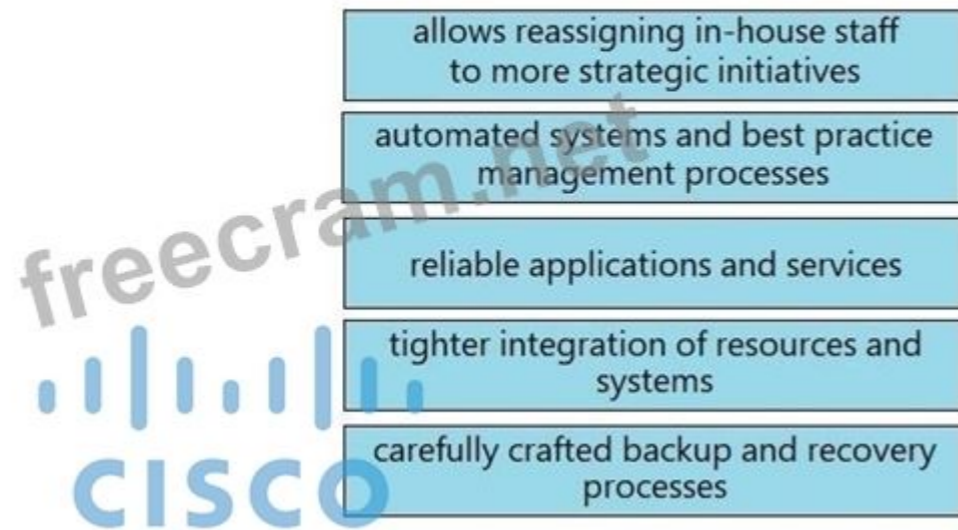
As technologies such as big data, cloud, and IoT continue to grow, so will the demand for network bandwidth. Business strategies must be flexible to accommodate these changes when it comes to priorities and direction, and the network design strategy also must be agile and adaptable.

Drag and drop the benefits from the left onto the corresponding strategic approaches on the right as they relate to network design and management.

Answer Area	
carefully crafted backup and recovery processes	productivity enhancement
automated systems and best practice management processes	resource optimization
allows reassigning in-house staff to more strategic initiatives	connectivity enhancement
tighter integration of resources and systems	cost efficiency
reliable applications and services	minimized risks

**Answer:**

## Answer Area



### Explanation:

Carefully crafted backup and recovery processes - Minimized risks

Backup and recovery processes help reduce the impact of potential failures and mitigate risks by ensuring data integrity and availability.

Automated systems and best practice management processes - Resource optimization Automation and best practices help streamline network management, reduce manual effort, and optimize resource utilization.

Allows reassigning in-house staff to more strategic initiatives - Productivity enhancement By automating tasks and optimizing processes, in-house staff can focus on more strategic and impactful initiatives, boosting productivity.

Tighter integration of resources and systems - Cost efficiency

Integrating resources and systems helps to eliminate redundancies and reduce operational costs, leading to better cost efficiency.

Reliable applications and services - Connectivity enhancement

Ensuring the reliability of applications and services improves the overall connectivity of the network, making it more resilient and responsive.

### NEW QUESTION: 174

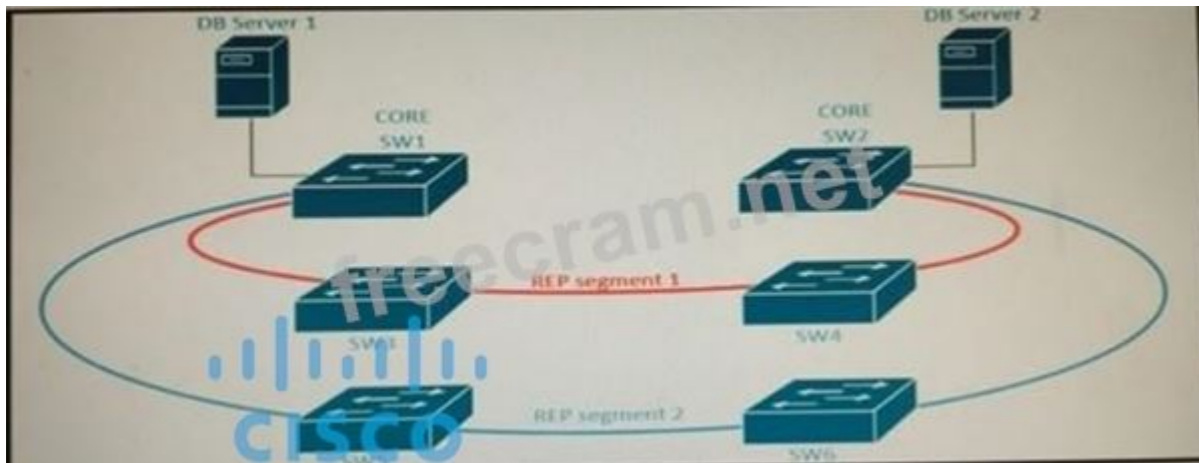
Company XYZ is designing the IS-IS deployment strategy for their multiarea IS-IS domain. They want IS-IS neighbor relationships to be minimized on each network segment and want to optimize the size of the IS-IS LSDB on each router. Which can design can be used to meet these requirements?

- A. Design the network so that all routers are Level 1 routers
- B. Design the network so that the routers connecting to other areas are Level 1/Level 2 routers and internal routers are Level 1
- C. Design all routers as Level 2 routers. Set the links between the routers as Level 1 with the area
- D. Design the network so that the routers connecting to other areas are Level 2 routers and internal routers are Level 1

Answer: ([SHOW ANSWER](#))

### NEW QUESTION: 175

Refer to the exhibit. A new high availability DB sever cluster is installed in the network.



These two servers require high bandwidth and low latency Layer 2 connectivity for database replication.

Which solution supports these requirements?

- A. Add two new links between SW1 and SW2 configured as LACP trunk with STP
- B. Add secondary links to REP segments 1 and 2
- C. Add two new links between SW1 and SW2 configured as REP segment 3
- D. Add two new links between SW1 and SW2 configured as REP segments 1 and 2 respectively

Answer: [\(SHOW ANSWER\)](#)

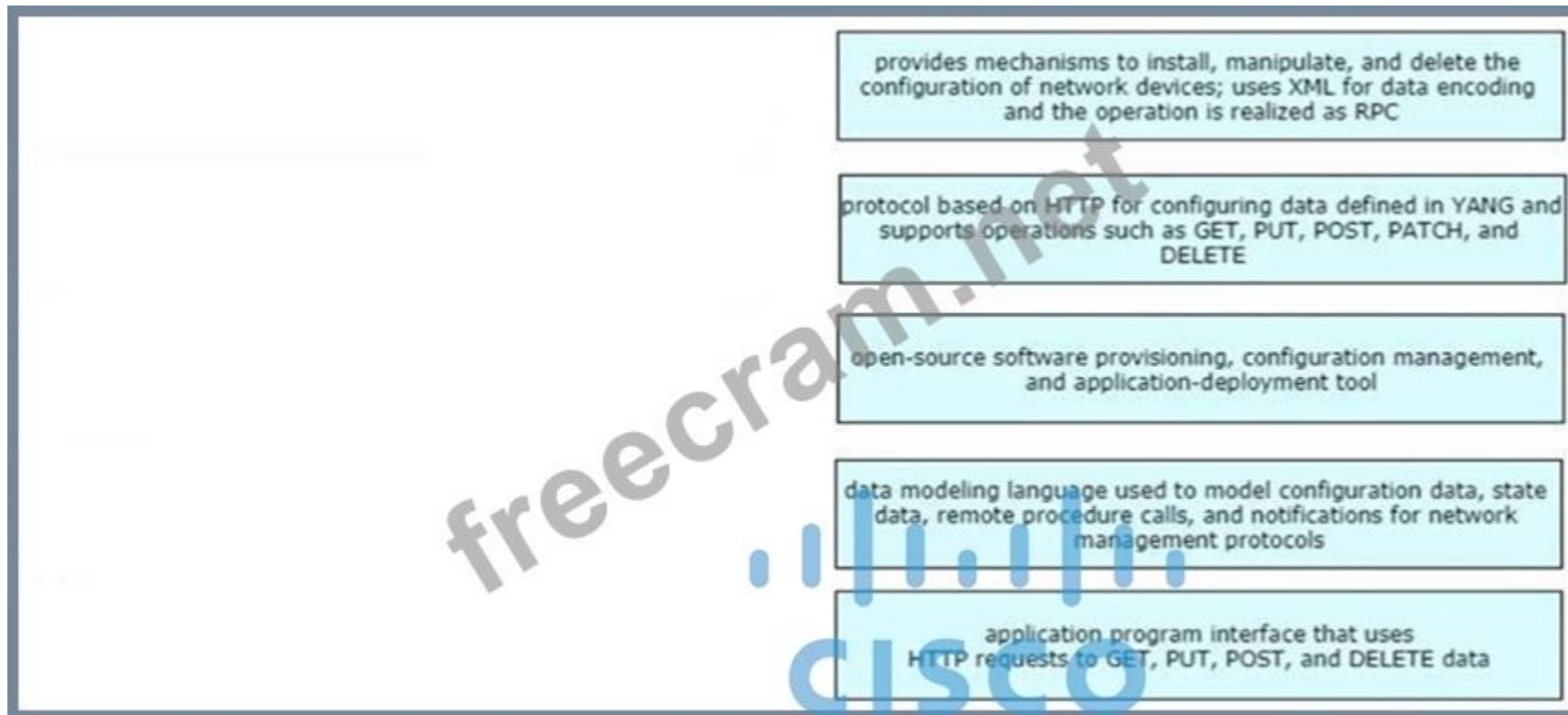
#### NEW QUESTION: 176

Drag and Drop Question

Drag and drop the characteristics from the left onto the corresponding network management options on the right.

protocol based on HTTP for configuring data defined in YANG and supports operations such as GET, PUT, POST, PATCH, and DELETE	NETCONF
provides mechanisms to install, manipulate, and delete the configuration of network devices; uses XML for data encoding and the operation is realized as RPC	RESTCONF
application program interface that uses HTTP requests to GET, PUT, POST, and DELETE data	ANSIBLE
open-source software provisioning, configuration management, and application-deployment tool	YANG
data modeling language used to model configuration data, state data, remote procedure calls, and notifications for network management protocols	REST API

Answer:



**NEW QUESTION: 177**

The controller has a global view of the network, and it can easily ensure that the network is in a consistent and optimal configuration. Which two statements describe a centralized SDN control path? (Choose two.)

- A. A centralized controller can support all southbound APIs, which allows for easy integration with legacy equipment
- B. It is highly-available by design with no single-point-of-failure risks present
- C. It significantly improves the latency when performing reactive handling of PACKET\_IN events
- D. Integrating smart NIC capabilities on the local host level is made easier through rest APIs
- E. Scaling of the centralized controller cluster is challenging for services like DHCP and load- balancing

Answer: ([SHOW ANSWER](#))

**NEW QUESTION: 178**

Router R1 is a BGP speaker with one peering neighbor over link "A". When the R1 link/interface "A" fails, routing announcements are terminated, which results in the tearing down of the state for all BGP routes at each end of the link. What is this a good example of?

- A. resiliency
- B. fault isolation
- C. fate sharing
- D. redundancy

Answer: C ([LEAVE A REPLY](#))

**NEW QUESTION: 179**

A network hacker is trying to interrupt the transport packet on IPSEC. A packet with duplicate sequence numbers is introduced. The customer sends high-priority traffic during this window.

Which design parameter should be considered to mitigate this issue?

- A. Restrict keyword in IPSEC Tunnel.

- B. Increase QoS shape policy.
- C. Classify and Mark duplicate sequence packets.
- D. Apply anti-replay window 4096.

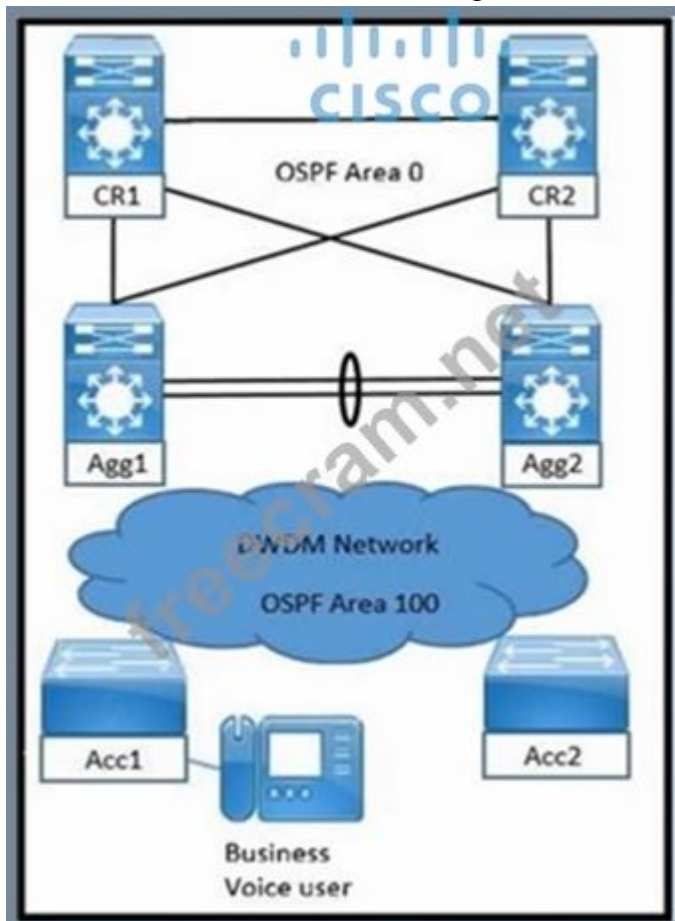
Answer: ([SHOW ANSWER](#))

#### NEW QUESTION: 180

Refer to the exhibit. A solution architect is tasked with designing a quick fault detection and convergence solution based on a set of requirements:

- Due to the use of voice applications, users must ideally not experience traffic disruption in excess of 100 milliseconds in case of link or node failures in OSPF area 100.
- The enterprise requires the network to be highly available.
- Traffic must quickly switch to another path without waiting for the OSPF dead interval to kick in.

What can be included in the design in order to meet these requirements?



- A. Make OSPF peers use BFD and set the BFD timers to an appropriate value.
- B. Enable IP SLA tracking with next hop to OSPF peer.
- C. Use fault propagation timers specified in milliseconds for the OSPF SPF algorithm.
- D. Adjust SPF delay and LSA interval timers in OSPF protocol.

Answer: ([SHOW ANSWER](#))

Bidirectional Forwarding Detection (BFD) provides sub-second failure detection independent of OSPF hello/dead timers; integrating BFD with OSPF area 100 and setting aggressive BFD timers enables <100 ms fault detection and rapid path switchover.

**NEW QUESTION: 181**

Company XYZ must design a strategy to protect their routers from DoS attacks, such as traffic destined to the router's own route processor, using separate control plane categories. Which two capabilities can be used to achieve this requirement? (Choose two.)

- A. Control Plane Protection using queue thresholding on the transit subinterface
- B. Control Plane Protection using port filtering on the main interface
- C. Control Plane Protection using port filtering on the host subinterface
- D. Control Plane Protection using queue thresholding on the host subinterface
- E. Control Plane Protection using port filtering on the transit subinterface

Answer: ([SHOW ANSWER](#))

Valid 400-007 Dumps shared by EduDump.com for Helping Passing 400-007 Exam! EduDump.com now offer the **newest 400-007 exam dumps**, the EduDump.com 400-007 exam **questions have been updated** and **answers have been corrected** get the **newest** EduDump.com 400-007 dumps with Test Engine here:

<https://www.edudump.com/exams/Cisco/400-007/premium/> (550 Q&As Dumps, **35%OFF** Special Discount Code: **freecram**)

**NEW QUESTION: 182**

With virtualization being applied in many parts of the network every physical link is likely to carry one or more virtual links, but what is a drawback in cases like this?

- A. bandwidth utilization
- B. serialization delay
- C. unneeded tunneling
- D. fate sharing

Answer: ([SHOW ANSWER](#))

**NEW QUESTION: 183**

A business invests in SDN and develops its own SDN controller that, due to budget constraints, runs on a single controller. The controller actively places an exclusive lock on the configuration of the devices to ensure it is the only source of changes to the environment. What is the result if the controller fails?

- A. Manual changes are only possible until the controller is restored
- B. If a device fails, the configuration backup is unavailable-
- C. All device configurations are in read-only mode until the controller is restored.
- D. The control plane is unavailable until the controller is restored.

Answer: ([SHOW ANSWER](#))

**NEW QUESTION: 184**

The security department at a bank is evaluating its data governance policy. A security officer requests that processes be developed to define who within the bank has authority and control over data assets and how the data assets can be used. The security officer also states that the policy must encompass the users, processes and technologies needed to manage and protect the data assets.

What are two goals of the new data governance policy? (Choose two.)

- A. Decrease the size of the data.
- B. Enforce data encryption at rest and in transit.

- C. Support network segmentation.
- D. Establish internal rules for data use.
- E. Increase the value of the data.

**Answer: D,E ([LEAVE A REPLY](#))**

Data governance establishes internal rules for data use by defining ownership, authority, and control.

By ensuring proper management and protection, data governance increases the value of the data as a trusted business asset.

#### **NEW QUESTION: 185**

Which security architecture component offers streamlined security operations, ease of use, and visibility across all network security elements, independent of location or form factor?

- A. threat-centric protection
- B. integrated actionable intelligence
- C. distributed enforcement
- D. central command and control

**Answer: ([SHOW ANSWER](#))**

Distributed Enforcement: Support for any form factor in any location. Network security services must be available in any location, in any form factor, and in any combination. This allows the security team to apply granular network security policies to network segments, flows, applications, or specific groups of users.

#### **NEW QUESTION: 186**

As part of a new network design documentation, you are required to explain the reason for choosing cisco FabricPath for Layer 2 loop avoidance.

Which two elements help Cisco FabricPath mitigate Layer 2 loops if they happen in the Layer 2 MP network? (Choose two)

- A. MAC tunneling
- B. IS-IS multipath
- C. TTL header
- D. RPF check

**Answer: ([SHOW ANSWER](#))**

#### **NEW QUESTION: 187**

Which design benefit of PortFast is true?

- A. PortFast detects one-way communications on the physical port, which prevents switch loops
- B. PortFast prevents switch loops that are caused by a unidirectional point to point link condition on Rapid PVST+ and MST
- C. PortFast does not generate a spanning tree topology change when a station on a port is connected or disconnected
- D. PortFast allows small, unmanaged switches to be plugged into ports of access switches without risking switch loops
- E. PortFast disables spanning tree on the port, which puts the port into the forwarding state immediately after it is connected
- F. PortFast prevents switched traffic from traversing suboptimal paths on the network

**Answer: ([SHOW ANSWER](#))**

#### **NEW QUESTION: 188**

A company created an IPv6 adoption plan for its campus network that requires dual-stack connectivity on the network. Campus users must have IPv6 connectivity to an HR management application, which is the first IPv6-only application hosted in the company's data center. Which two security mechanisms can be used to prevent a malicious user from masquerading as the IPv6 gateway? (Choose two.)

- A. IPv6 RA guard
- B. IPv6 snooping
- C. IPv6 device tracking
- D. IPv6 address glean
- E. port ACLs

**Answer:** ([SHOW ANSWER](#))

IPv6 RA guard: Protects the network from rogue IPv6 routers by filtering out unauthorized Router Advertisements (RAs), preventing attackers from masquerading as a legitimate IPv6 gateway.

IPv6 snooping: Allows the network device to inspect and track IPv6 traffic, ensuring that only valid devices are communicating, and preventing rogue devices from impersonating the IPv6 gateway.

**NEW QUESTION: 189**

How can EIGRP topologies be designed to converge as fast as possible in the event of a point-to-point link failure?

- A. Limit the query domain by use of default routes.
- B. Build neighbor adjacencies in squared fashion.
- C. Limit the query domain by use of summarization.
- D. Build neighbor adjacencies in a triangulated fashion.
- E. Limit the query domain by use of distribute lists.

**Answer:** ([SHOW ANSWER](#))

**NEW QUESTION: 190**

A company is reviewing their technology roadmap ahead of their cloud journey. The as-is assessment found that a large inventory (5000+) of servers sees less than 50% capacity utilization. Which cloud architecture model supports the company to optimize the resource utilization?

- A. homogeneous cloud
- B. heterogeneous cloud
- C. hybrid/private cloud
- D. public cloud

**Answer:** ([SHOW ANSWER](#))

The public cloud model allows for the dynamic allocation of resources, which can optimize resource utilization. It provides scalability and flexibility, meaning the company can provision resources on demand, leading to better utilization of server capacity and reducing the need for over-provisioning.

**NEW QUESTION: 191**

Agile and Waterfall are two popular methods for organizing projects. What describes any Agile network design development process?

- A. working design over comprehensive documentation
- B. following a plan over responding to change
- C. processes and tools over individuals and interactions over time
- D. contract negotiation over customer collaboration

**Answer:** ([SHOW ANSWER](#))

**NEW QUESTION: 192**

Company XYZ branch offices connect to the headquarter sites using two links, MPLS and Internet. The company wants to design the traffic flow so that voice traffic goes through the MPLS link and all other traffic uses either the MPLS link or the Internet link. Which technique can the company use in their design to ensure that the traffic is not process switched?

- A. floating static route
- B. virtualization
- C. policy-based routing
- D. virtual links

**Answer:** ([SHOW ANSWER](#))

#### **NEW QUESTION: 193**

With virtualization being applied in many parts of the network, every physical link is likely to carry one or more virtual links, but what is a drawback in cases like this?

- A. unneeded tunneling
- B. fate sharing
- C. serialization delay
- D. bandwidth utilization

**Answer:** ([SHOW ANSWER](#))

In virtualized environments, multiple virtual links share the same physical link. If that physical link fails, all virtual links mapped to it fail as well. This drawback is known as fate sharing.

#### **NEW QUESTION: 194**

Which two design options are available to dynamically discover the RP in an IPv6 multicast network? (Choose two)

- A. MSDP
- B. Auto-RP
- C. embedded RP
- D. BSR
- E. MLD

**Answer:** ([SHOW ANSWER](#))

#### **NEW QUESTION: 195**

A thorough examination of the current network infrastructure has revealed that several devices have an unusual high CPU load. A traffic analysis indicates that control plane protocols and management traffic are affected as the devices are busy processing inbound traffic. The networking team is working on updating their design for the entire network to handle situations like this. Which feature or technology can be added to help mitigate the problem?

- A. TCAM carving
- B. deep interface buffers
- C. control plane policing
- D. modular QoS

**Answer:** ([SHOW ANSWER](#))

#### **NEW QUESTION: 196**

An enterprise that runs numerous proprietary applications has major issues with its on-premises server estate hardware, to the point where business-critical functions are compromised. The enterprise accelerates plans to migrate services to the cloud.

Which cloud service should be used if the enterprise wants to avoid hardware issues yet have control of its applications and operating system?

- A. SaaS
- B. PaaS
- C. IaaS
- D. hybrid cloud

Answer: ([SHOW ANSWER](#))

**Valid 400-007 Dumps** shared by EduDump.com for Helping Passing 400-007 Exam! EduDump.com now offer the **newest 400-007 exam dumps**, the EduDump.com 400-007 exam **questions have been updated** and **answers have been corrected** get the **newest** EduDump.com 400-007 dumps with Test Engine here:

<https://www.edudump.com/exams/Cisco/400-007/premium/> (550 Q&As Dumps, **35%OFF** Special Discount Code: **freecram**)

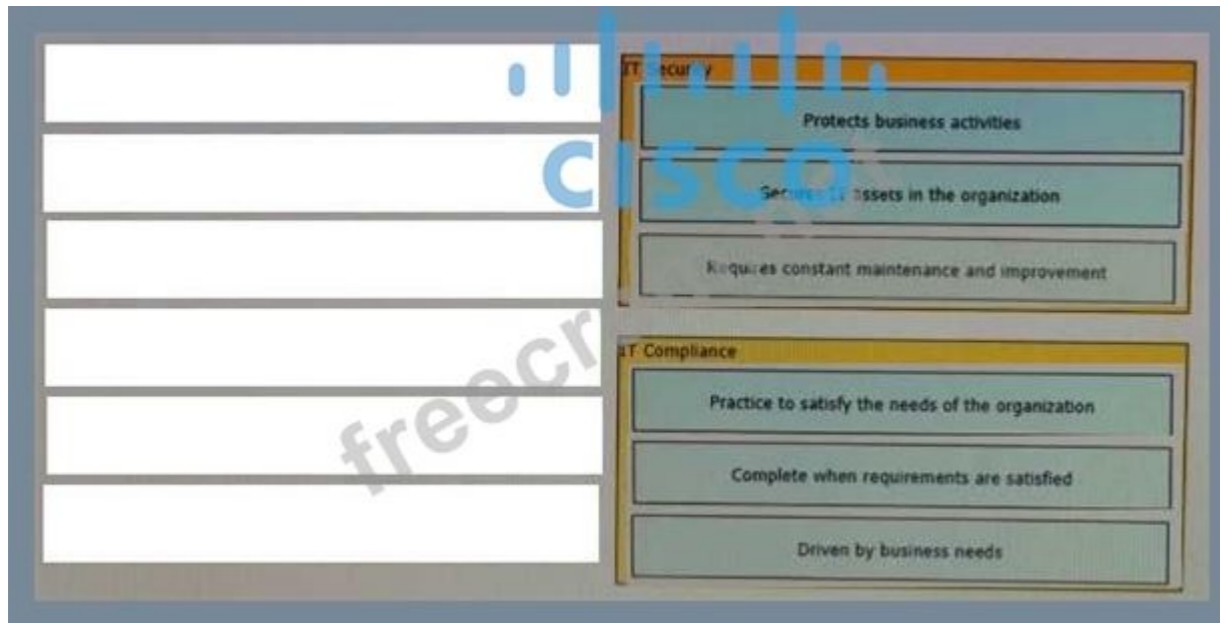
**NEW QUESTION: 197**

Drag and Drop Question

The line between security and compliance is easily blurred and is, to a large extent, a moving target. Drag and drop each of the requirements on the left to the appropriate section on the right.

Protects business activities	IT Security
Secures IT assets in the organization	
Practice to satisfy the needs of the organization	
Complete when requirements are satisfied	IT Compliance
Driven by business needs	
Requires constant maintenance and improvement	

Answer:



**NEW QUESTION: 198**

Company XYZ connects its sites over a private WAN. Their overlay network is running a DMVPN setup where the headquarters site is the hub. The company is planning on implementing multicast routing on the network. What should be used in the multicast routing design?

- A. PIM dense mode with RP located at the hub
- B. PIM sparse mode with RP located at each remote site
- C. PIM dense mode with RP located at each remote site
- D. PIM sparse mode with RP located at the hub

**Answer:** ([SHOW ANSWER](#))

<https://www.ccexpert.us/routing-switching-2/dynamic-multipoint-vpn.html>

**NEW QUESTION: 199**

Drag and Drop Question

Drag and drop the right functional descriptions from the left onto the corresponding protocols on the right.

## Answer Area

point-to-point service to carry Layer 2 traffic over MPLS networks

method of providing privacy, integrity, and authenticity to information transferred across IP networks

highly scalable and flexible method of transporting Layer 2 or Layer 3 overlay over IP networks

point-to-point protocol to carry Layer 2 traffic over IP network, which is capable of supporting multiple Layer 2 protocols such as Ethernet, PPP, etc.

encapsulates packets to route other protocols over IP networks, without being parsed like IP packets by any intermediate routers

IPsec

GRE

L2TPV3

VXLAN

E-Line

Answer:

## Answer Area

method of providing privacy, integrity, and authenticity to information transferred across IP networks

encapsulates packets to route other protocols over IP networks, without being parsed like IP packets by any intermediate routers

point-to-point protocol to carry Layer 2 traffic over IP network, which is capable of supporting multiple Layer 2 protocols such as Ethernet, PPP, etc.

highly scalable and flexible method of transporting Layer 2 or Layer 3 overlay over IP networks

point-to-point service to carry Layer 2 traffic over MPLS networks

### NEW QUESTION: 200

During initial preparations to deploy 802.1x for wired access to their network, a company must ensure that the solution complies with existing internal security policies. These policies mandate that every Auth-C/Auth-Z request must be protected by a tunnel which authenticates both server and clients using their PKI. At the same time, the user authentication phase must be independent of the tunnel.

Which scheme meets the requirements?

- A. PEAP
- B. EAP-MSCHAPv2
- C. EAP-MD5
- D. EAP-FAST

Answer: ([SHOW ANSWER](#))

Protected EAP (PEAP) establishes a secure TLS tunnel authenticated with PKI certificates for both client and server. Inside this tunnel, user authentication is performed independently (commonly using EAP-MSCHAPv2), ensuring both compliance with PKI-based tunnel protection and separation of the inner authentication phase.

**NEW QUESTION: 201**

Which optimal use of interface dampening on a fast convergence network design is true?

- A. When occasional flaps of long duration occur
- B. when the router hardware is slower than the carrier delay down detection
- C. when the switch hardware is faster than the debounce timer down detection
- D. when numerous adjacent flaps of very short duration occur

Answer: ([SHOW ANSWER](#))

**NEW QUESTION: 202**

You have been tasked with designing a data center interconnect to provide business continuity.

You want to encrypt the traffic over the DCI using IEEE 802.1AE MACsec to prevent the deployment of any firewall or IPS.

Which two interconnect technologies support MACsec? (Choose two.)

- A. KVPLS
- B. MPLS Layer 3 VPN
- C. DMVPN
- D. EoMPLS
- E. GET VPN

Answer: ([SHOW ANSWER](#))

**NEW QUESTION: 203**

Company XYZ uses an office model where the employees can use any open desk and plug their laptops in. They want to authenticate the end users using their domain username and password before allowing them access to the network. The design must also accommodate the ability of controlling traffic within the same group or subnet if a macro (or micro) segmentation-based model is adopted in the future. Which protocol can be recommended for this design to authenticate end users?

- A. RADIUS
- B. LDAP
- C. EAP
- D. TACACS+

Answer: ([SHOW ANSWER](#))

**NEW QUESTION: 204**

Which two points must network designers consider when designing a new network design or when evaluating an existing network design to help them understand the high-level design direction with regards to the security aspects? (Choose two)

- A. Consider for only multi-site networks
- B. Consider Business objectives and goals
- C. Consider organization's security policy standards
- D. Consider for only new network technologies and components

Answer: B,C ([LEAVE A REPLY](#))

**NEW QUESTION: 205**

IT and security managers should assess their operations and systems from the perspective of potential hackers. It includes the use of analytical activities and processes like behavior monitoring, social media monitoring, and security best practices.

Which process should be deployed to prevent sensitive information from getting into the wrong hands?

- A. network management
- B. productive benchmarking
- C. centralized monitoring
- D. operational security

**Answer:** ([SHOW ANSWER](#))

Operational security (OPSEC) is the process of identifying, monitoring, and protecting sensitive information from potential adversaries. By assessing systems as a hacker would, and applying practices like behavior and social media monitoring, OPSEC prevents critical information from being exposed or misused.

**NEW QUESTION: 206**

Which two aspects are considered when designing a dual hub dual DMVPN cloud topology?

(Choose two )

- A. spoke-to-spoke traffic will transit the hub unless spokes exchange dynamic routing directly
- B. hub sites must connect to both DMVPN clouds
- C. requires all sites to have dual Internet connections
- D. recommended for high availability
- E. will only work with single-tier headend architecture

**Answer:** ([SHOW ANSWER](#))

**NEW QUESTION: 207**

A consultant needs to evaluate project management methodologies for a new service deployment on the existing network of a customer. The customer wants to be involved in the end-to-end project progress and be provided with frequent updates. The customer also wants the ability to change the requirements if needed, as the project progresses. Which project management methodology should be used?

- A. phased
- B. Agile
- C. three principles
- D. Waterfall

**Answer:** ([SHOW ANSWER](#))

**NEW QUESTION: 208**

An enterprise network has two core routers that connect to 200 distribution routers and uses full- mesh IBGP peering between these routers as its routing method. The distribution routers are experiencing high CPU utilization due to the BGP process.

Which design solution is the most cost effective?

- A. Increase the memory on the core routers
- B. Implement e BGP between the core and distribution routers
- C. Implement route reflectors on the two core routers
- D. Increase bandwidth between the core routers
- E. Increase the memory on the distribution routers

Answer: ([SHOW ANSWER](#))

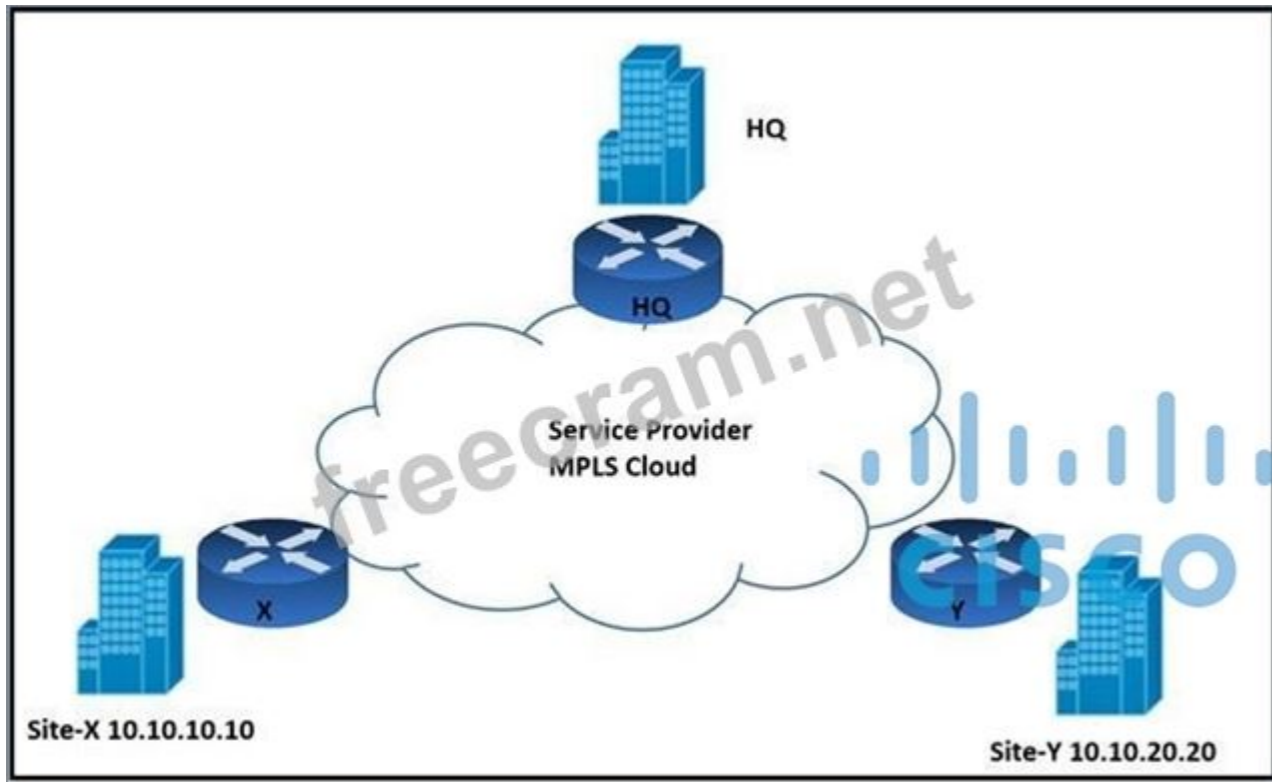
**NEW QUESTION: 209**

Refer to the exhibit. An architect must design an enterprise WAN that connects the headquarters with 22 branch offices. The number of remote sites is expected to triple in the next three years.

The final solution must comply with these requirements:

- Only the loopback address of each of the enterprise CE X and Y routers must be advertised to the interconnecting service provider cloud network.
- The transport layer must carry the VPNv4 label and VPN payload over the MP-BGP control plane.
- The transport layer must not be under service provider control.

Which enterprise WAN transport virtualization technique meets the requirements?



- A. MPLS over BGP over multipoint GRE
- B. point-to-point GRE per VRF
- C. EIGRP Over the Top
- D. DMVPN per VRF

Answer: A ([LEAVE A REPLY](#))

**NEW QUESTION: 210**

What are two examples of components that are part of an SDN architecture? (Choose two.)

- A. management plane
- B. network plane
- C. application plane
- D. control plane

E. software plane

Answer: ([SHOW ANSWER](#))

**NEW QUESTION: 211**

Virtualisation pose a special challenges for NAC because virtual servers can move around a data center, and the VLAN can change as servers move. What is an option that can be used to improve security in this condition?

- A. application-based security
- B. in-band traffic control
- C. traffic encryption
- D. role-based control

Answer: ([SHOW ANSWER](#))

Virtual servers moving across different physical hosts and VLANs create challenges for traditional network access control (NAC) because the network location and VLAN membership of a server can change dynamically.

Role-based control assigns network access and security policies based on the identity or role of the device or user rather than static network attributes like IP address or VLAN.

This allows consistent enforcement of security policies regardless of where the virtual server moves within the data center.

This approach improves security by ensuring that access rights and restrictions follow the workload or user, not the physical or logical network location.

**Valid 400-007 Dumps** shared by EduDump.com for Helping Passing 400-007 Exam! EduDump.com now offer the **newest 400-007 exam dumps**, the EduDump.com 400-007 exam **questions have been updated** and **answers have been corrected** get the **newest** EduDump.com 400-007 dumps with Test Engine here:

<https://www.edudump.com/exams/Cisco/400-007/premium/> (550 Q&As Dumps, **35%OFF** Special Discount Code: **freecram**)

**NEW QUESTION: 212**

Which three characteristics of the Single Tier and the Dual Tier Headend Architectures for DMVPN designs are true? (Choose three.)

- A. In a Single Tier Headend Architecture, the GRE tunnel endpoint and encryption endpoint functionalities are on the same router
- B. In a Dual Tier Headend Architecture, there are two different headend routers per DMVPN cloud for high availability purposes
- C. In a Dual Tier Headend Architecture, the GRE tunnel endpoint and encryption endpoint functionalities are on different routers
- D. A Single Tier Headend Architecture is required when using dual cloud topologies with spoke-to-spoke connectivity
- E. In a Single Tier Headend Architecture there is a single headend router per DMVPN cloud topology
- F. A Dual Tier Headend Architecture is required when using dual cloud topologies with spoke-to-spoke connectivity

Answer: **A,C,E** ([LEAVE A REPLY](#))

**NEW QUESTION: 213**

Adding a parallel path between any two points in a network will increase resilience by removing a single point of failure however, it should also be measured how much adding this second link increases resilience by reducing potential downtime.

Which general rule can be adopted in network designs to account for additional links?

- A. mean time between failure
- B. halving effect
- C. mean time to repair
- D. total up time

**Answer: (SHOW ANSWER)**

The halving effect is a general rule in network design stating that adding a parallel path between two points roughly halves the probability of downtime caused by a single failure, thereby increasing resilience.

**NEW QUESTION: 214**

Drag and Drop Question

An enterprise organization currently provides WAN connectivity to their branch sites using MPLS technology, and the enterprise network team is considering rolling out SD-WAN services for all sites.

With regards to the deployment planning, drag and drop the actions from the left onto the corresponding steps on the right.

Select deployment models between virtual server software and hardware-based SD-WAN appliances.	step 1
Conduct a pilot test to observe and record unexpected issues.	step 2
Make an assessment of running protocols and application usage in the network.	step 3
Evaluate existing circuits and performance to get details of connectivity cost and reliability.	step 4
Layout transport plan based on business prioritizes traffic and the unique bandwidth requirements of each specific application.	step 5
Understand the traffic monitoring requirements and capabilities.	step 6

**Answer:**

	Make an assessment of running protocols and application usage in the network.
	Evaluate existing circuits and performance to get details of connectivity cost and reliability.
	Select deployment models between virtual server software and hardware-based SD-WAN appliances.
	Layout transport plan based on business prioritizes traffic and the unique bandwidth requirements of each specific application.
	Understand the traffic monitoring requirements and capabilities.
	Conduct a pilot test to observe and record unexpected issues.

**NEW QUESTION: 215**

A customer has a functional requirement that states HR systems within a data center should be segmented from other systems that reside in the same data center and same VLAN. The systems run legacy applications by using hard-coded IP addresses. Which segmentation method is suitable and scalable for the customer?

- A. transparent firewalling
- B. data center perimeter firewalling
- C. VACLs on data center switches
- D. routed firewalls

**Answer:** ([SHOW ANSWER](#))

**NEW QUESTION: 216**

Which two actions must be taken when assessing an existing wireless network implementation for its readiness to support voice traffic? (Choose two.)

- A. Check for high channel utilization.
- B. Check for high roaming delay
- C. Check for latency over wireless
- D. Check for uniform radio coverage across the floors.
- E. Identify frequent TX power changes

**Answer:** ([SHOW ANSWER](#))

<https://community.cisco.com/t5/wireless/channel-utilization/td-p/2716667>

**NEW QUESTION: 217**

Company ABC wants to minimize the risk of users plugging unauthorized switches and hubs into the network.

Which two features can be used on the LAN access ports to support this design requirement?

(Choose two.)

- A. Loop Guard
- B. PortFast
- C. DTF
- D. Root Guard
- E. BPDU Guard

**Answer:** ([SHOW ANSWER](#))

**NEW QUESTION: 218**

Drag and Drop Question

Drag and drop the optical technology design characteristics on the left to the correct optical technologies on the right. Not all options are used.

- suited for short-haul and long-haul distances
- number of channels can be 40 or more
- large channel spacing (2500 Ghz)
- small channel spacing (100 or 50 Ghz)
- suited for short-haul, typically limited to Metropolitan networks
- maximum of 16 channels
- only suitable for ring or dual-ring topology



Answer:



### CWDM (Coarse Wavelength Division Multiplexing)

large channel spacing (2500 Ghz)

suited for short-haul, typically limited to Metropolitan networks

maximum of 16 channels

### DWDM (Dense Wavelength Division Multiplexing)

suited for short-haul and long-haul distances

number of channels can be 40 or more

small channel spacing (100 or 50 Ghz)

only suitable for ring or dual-ring topology

#### NEW QUESTION: 219

An organization is working on a design solution for a new Internet-based remote access virtual private network that has 1000 remote sites. A network administrator recommends GETVPN as the model. What is a potential problem of using GETVPN in this situation?

- A. GETVPN and DMVPN do not interoperate
- B. GETVPN requires a high level of background traffic to maintain its IPsec SAs
- C. GETVPN key servers would be on public hacker-reachable space and need higher security
- D. GETVPN is not scalable to a large number of remote sites

Answer: ([SHOW ANSWER](#))

#### NEW QUESTION: 220

The major business applications of an enterprise are largely monolithic and hard-coded. As part of a major modernization and overhaul of the applications, the goal is to move to a modular and containerized application architecture mode. At the same time, decoupling from the hardware is desired to move to an on-demand provisioning. However, the CyberOps team mandated that the final architecture must provide the same security levels as an air-gapped data center. Which cloud architecture meets these requirements?

- A. IaaS
- B. PaaS
- C. hybrid cloud
- D. public cloud
- E. private cloud

**Answer:** ([SHOW ANSWER](#))

#### **NEW QUESTION: 221**

Management is often overlooked during the design of a network because it is considered an operational issue rather than a design issue. A hierarchical disrupted arrangement can be used whereby disrupted NMSs send data to sophisticated centralized NMSs using a manager-of-managers architecture. What is an advantage of a disrupted management system?

- A. simplified tracking of management devices and assets
- B. easier to contain the amount of data that is collected and stored
- C. more sophisticated and globally controlled security mechanism
- D. reduced amount of network management data flows across the network

**Answer:** D ([LEAVE A REPLY](#))

In a distributed management system, local or regional Network Management Systems (NMSs) collect and process data from their respective network segments. They then send summarized or aggregated information to a centralized, more sophisticated NMS. This hierarchy:

- Reduces the volume of raw management data that needs to be transmitted across the entire network, lowering bandwidth consumption and improving scalability.
- Allows localized management and quicker responses to issues within segments.
- Enables the centralized NMS to focus on high-level analysis and decision-making without being overwhelmed by raw data.

**Valid 400-007 Dumps** shared by EduDump.com for Helping Passing 400-007 Exam! EduDump.com now offer the **newest 400-007 exam dumps**, the EduDump.com 400-007 exam **questions have been updated** and **answers have been corrected** get the **newest** EduDump.com 400-007 dumps with Test Engine here:

<https://www.edudump.com/exams/Cisco/400-007/premium/> (550 Q&As Dumps, **35%OFF** Special Discount Code: **freecram**)