

Cisco.350-401.v2020-09-25.q52

Exam Code:	350-401
Exam Name:	Implementing Cisco Enterprise Network Core Technologies (350-401 ENCOR)
Certification Provider:	Cisco
Free Question Number:	52
Version:	v2020-09-25
# of views:	1407
# of Questions views:	29030
https://www.freecram.net/torrent/Cisco.350-401.v2020-09-25.q52.html	

NEW QUESTION: 1

Which two pieces of information are necessary to compute SNR? (Choose two.)

- A. RSSI
- B. noise floor
- C. transmit power
- D. EIRP
- E. antenna gain

Answer: ([SHOW ANSWER](#))

NEW QUESTION: 2

Which statement about a fabric access point is true?

- A. It is in FlexConnect mode and must be connected directly to the fabric border node.
- B. It is in local mode and must be connected directly to the fabric edge switch.
- C. It is in local mode and must be connected directly to the fabric border node.
- D. It is in FlexConnect mode and must be connected directly to the fabric edge switch.

Answer: ([SHOW ANSWER](#))

NEW QUESTION: 3

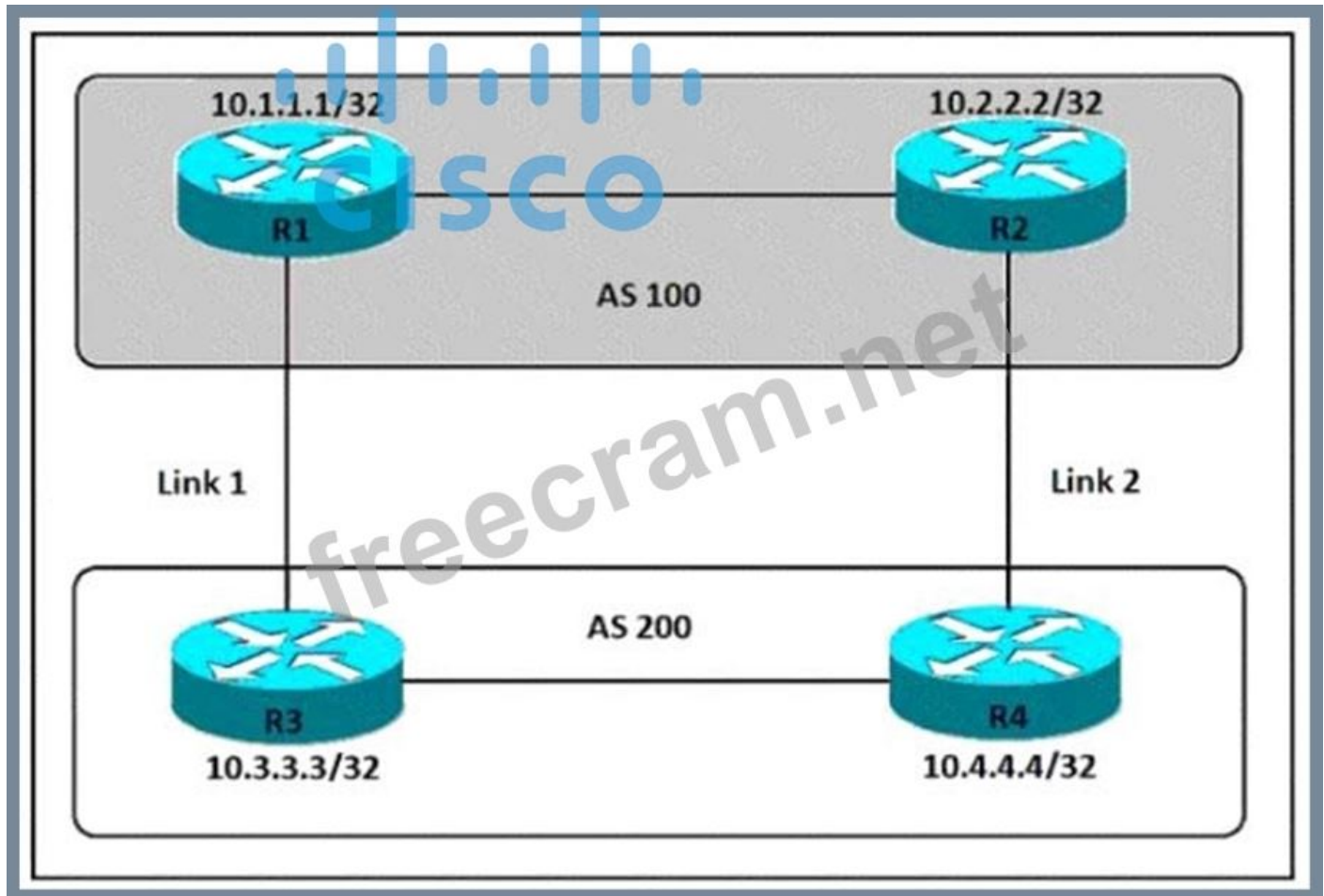
Which feature of EIGRP is not supported in OSPF?

- A. load balance over four equal-costs paths
- B. per-packet load balancing over multiple paths
- C. load balancing of unequal-cost paths
- D. uses interface bandwidth to determine best path

Answer: C ([LEAVE A REPLY](#))

NEW QUESTION: 4

Refer to the exhibit.



An engineer must ensure that all traffic leaving AS 200 will choose Link 2 as the exit point. Assuming that all BGP neighbor relationships have been formed and that the attributes have not been changed on any of the routers, which configuration accomplish task?

- A. R4(config-router)bgp default local-preference 200
- B. R3(config-router)bgp default local-preference 200
- C. R3(config-router)neighbor 10.1.1.1 weight 200
- D. R4(config-router)nighbor 10.2.2.2 weight 200

Answer: (SHOW ANSWER)

NEW QUESTION: 5

Which statement about Cisco EAP-FAST is true?

- A. It does not require a RADIUS server certificate.
- B. It operates in transparent mode.
- C. It is an IETF standard.
- D. It requires a client certificate.

Answer: (SHOW ANSWER)

NEW QUESTION: 6

Which two GRE features are configured to prevent fragmentation? (Choose two.)

- A. DF bit clear
- B. TCP window size
- C. IP MTU
- D. MTU ignore
- E. TCP MSS

Answer: ([SHOW ANSWER](#))

NEW QUESTION: 7

What is the difference between the enable password and the enable secret password when service password encryption is enable on an IOS device?

- A. The enable password is encrypted with a stronger encryption method.
- B. The enable password cannot be decrypted.
- C. The enable secret password is protected via stronger cryptography mechanisms.
- D. There is no difference and both passwords are encrypted identically.

Answer: ([SHOW ANSWER](#))

NEW QUESTION: 8

What NTP Stratum level is a server that is connected directly to an authoritative time source?

- A. Stratum 14
- B. Stratum 0
- C. Stratum 1
- D. Stratum 15

Answer: ([SHOW ANSWER](#))

NEW QUESTION: 9

Which standard access control entry permits from odd-numbered hosts in the 10.0.0.0/24 subnet?

- A. Permit 10.0.0.1.0.0.0.254
- B. Permit 10.0.0.0.0.0.0.1
- C. Permit 10.0.0.0.255.255.255.254
- D. Permit 10.0.0.1.0.0.0.0

Answer: ([SHOW ANSWER](#))

NEW QUESTION: 10

Refer to the exhibit.

```
access-list 1 permit 10.1.1.0 0.0.0.31
ip nat pool CISCO 209.165.201.1 209.165.201.30 netmask 255.255.255.224
ip nat inside source list 1 pool CISCO
```

What are two effect of this configuration? (Choose two.)

- A. The 209.165.201.0/27 subnet is assigned as the outside local address range.
- B. It establishes a one-to-one NAT translation.

- C. The 10.1.1.0/27 subnet is assigned as the inside global address range.
- D. Inside source addresses are translated to the 209.165.201.0/27 subnet.
- E. The 10.1.1.0/27 subnet is assigned as the inside local addresses.

Answer: ([SHOW ANSWER](#))

NEW QUESTION: 11

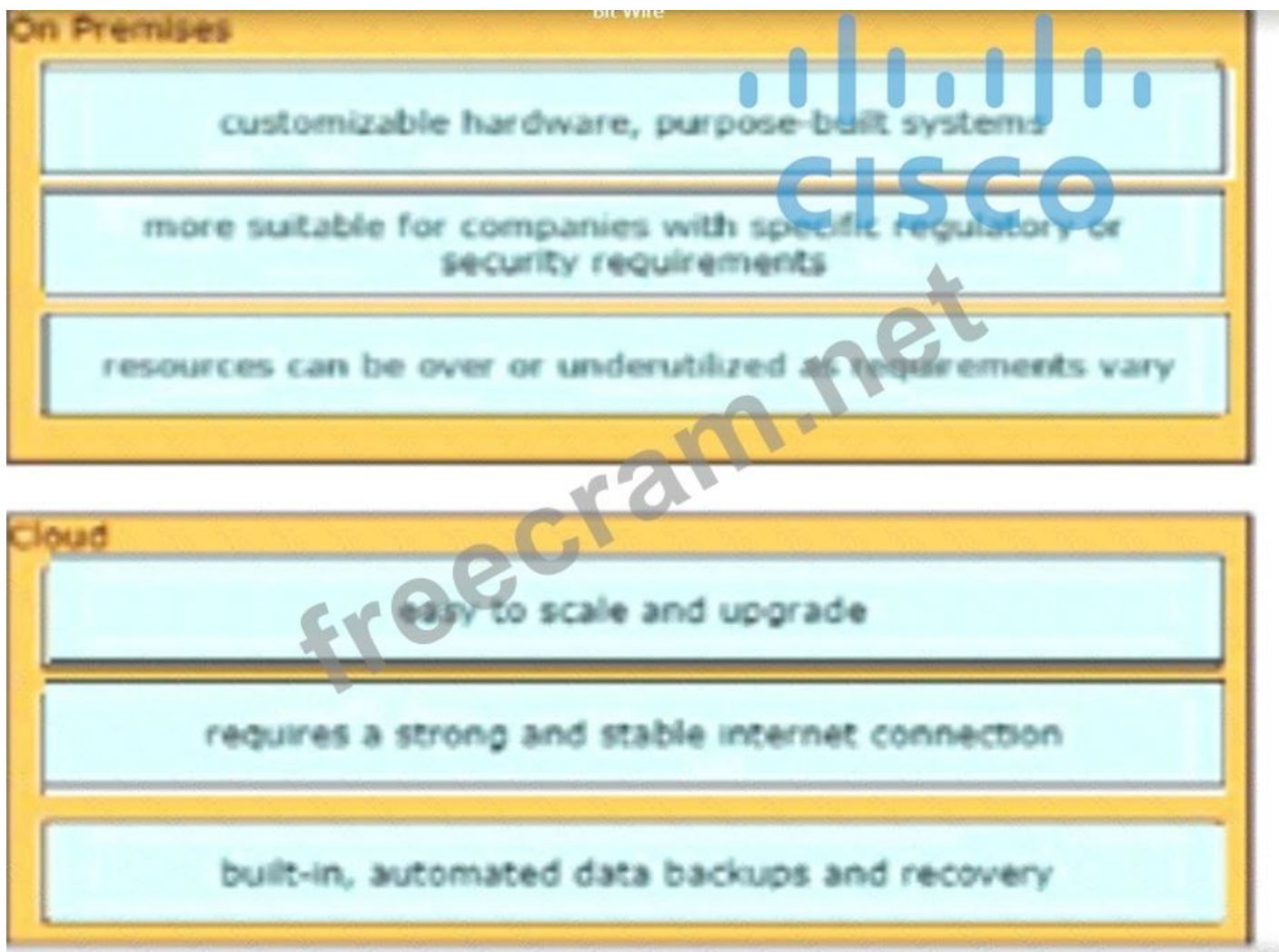
Drag and drop the characteristics from the left onto the correct infrastructure deployment types on the right.

Answer:

Explanation

On premise: customizable, specific requirements, resources

Cloud: scale, built-in automated backup, strong stable internet



NEW QUESTION: 12

A client device fails to see the enterprise SSID, but other devices are connected to it. What is the cause of this issue?

- A. The client has incorrect credentials stored for the configured hidden SSID.
- B. The hidden SSID was not manually configured on the client.
- C. The client has incorrect credentials stored for the configured broadcast SSID.
- D. The broadcast SSID was not manually configured on the client.

Answer: ([SHOW ANSWER](#))

NEW QUESTION: 13

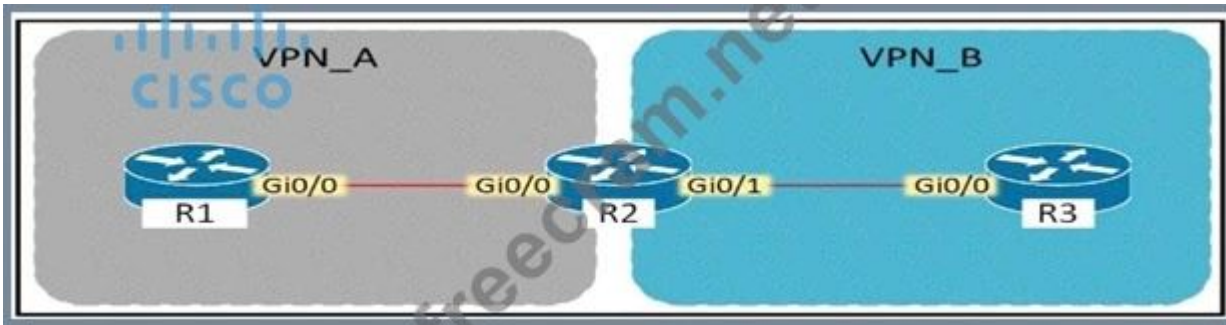
An engineer must protect their company against ransom ware attacks. Which solution allows the engineer to block the execution stage and prevent file encryption?

- A. Use Cisco AMP deployment with the Malicious Activity Protection engine enabled.
- B. Use Cisco AMP deployment with the Exploit Prevention engine enabled.
- C. Use Cisco Firepower with Intrusion Policy and snort rules blocking SMB exploitation.
- D. Use Cisco Firepower and block traffic to TOR networks.

Answer: ([SHOW ANSWER](#))

NEW QUESTION: 14

Refer to the exhibit.



Assuming that R is a CE router, which VRF is assigned to Gi0/0 on R1?

- A. VRF VPN_B
- B. Default VRF
- C. Management VRF
- D. VRF VPN_A

Answer: ([SHOW ANSWER](#))

NEW QUESTION: 15

Which two methods are used by an AP that is trying to discover a wireless LAN controller?

(Choose two.)

- A. Cisco Discovery Protocol neighbour
- B. DHCP Option 43
- C. DNS lookup cisco-DNA-PRIMARY.localdomain
- D. querying other APs
- E. broadcasting on the local subnet

Answer: ([SHOW ANSWER](#))

NEW QUESTION: 16

A response code of 404 is received while using the REST API on Cisco UNA Center to POST to this URI.

`/dna/intent/api/v1 /template-programmer/project`

What does the code mean?

- A. The POST/PUT request was fulfilled and a new resource was created, Information about the resource is in the response body.
- B. The request accepted for processing, but the processing was not completed.
- C. The client made a request a resource that does not exist.
- D. The server has not implemented the functionality that is needed to fulfill the request.

Answer: ([SHOW ANSWER](#))

Valid 350-401 Dumps shared by ExamDiscuss.com for Helping Passing 350-401 Exam! ExamDiscuss.com now offer the **newest 350-401 exam dumps**, the ExamDiscuss.com 350-401 exam **questions have been updated** and **answers have been corrected** get the **newest** ExamDiscuss.com 350-401 dumps with Test Engine here:

<https://www.examdiscuss.com/Cisco/exam/350-401/premium/> (382 Q&As Dumps, **35%OFF**

Special Discount Code: **freecram**)

NEW QUESTION: 17

Which IP SLA operation requires the IP SLA responder to be configured on the remote end?

- A. TCP connect
- B. CMP jitter
- C. ICMP echo
- D. UDP jitter

Answer: ([SHOW ANSWER](#))

NEW QUESTION: 18

Which statement about Cisco Express Forwarding is true?

- A. The CPU of a router becomes directly involved with packet-switching decisions.
- B. maintains two tables in the data plane the FIB and adjacency table.
- C. It uses a fast cache that is maintained in a router data plane.
- D. It makes forwarding decisions by a process that is scheduled through the IOS scheduler.

Answer: ([SHOW ANSWER](#))

NEW QUESTION: 19

What mechanism does PIM use to forward multicast traffic?

- A. PIM sparse mode uses a flood and prune model to deliver multicast traffic.
- B. PIM sparse mode uses a pull model to deliver multicast traffic.
- C. PIM dense mode uses a pull model to deliver multicast traffic.
- D. PIM sparse mode uses receivers to register with the RP.

Answer: ([SHOW ANSWER](#))

NEW QUESTION: 20

Drag and Drop the decryptions from the left onto the routing protocol they describe on the right.

summaries can be created anywhere in the IGP topology

uses areas to segment a network

DUAL algorithm

summaries can be created in specific parts of the IGP topology

OSPF

EIGRP

Answer:

summaries can be created anywhere in the IGP topology

uses areas to segment a network

DUAL algorithm

summaries can be created in specific parts of the IGP topology

OSPF

summaries can be created anywhere in the IGP topology

uses areas to segment a network

EIGRP

DUAL algorithm

summaries can be created in specific parts of the IGP topology

OSPF

summaries can be created in specific parts of the IGP topology



uses areas to segment a network

EIGRP

DUAL algorithm

summaries can be created anywhere in the IGP topology

NEW QUESTION: 21

An engineer configures a WLAN with fast transition enabled. Some legacy clients fail to connect to this WLAN. Which feature allows the legacy clients to connect while still allowing other clients to use fast transition based on their OLTs?

- A. over the DS
- B. 802.11k
- C. 802.11V
- D. adaptive R

Answer: [\(SHOW ANSWER\)](#)

NEW QUESTION: 22

Which NGFW mode blocks flows crossing the firewall?

- A. Tap
- B. Inline tap
- C. Passive
- D. Inline

Answer: D [\(LEAVE A REPLY\)](#)

NEW QUESTION: 23

What is the role of the vsmart controller in a Cisco SD-WAN environment?

- A. IT performs authentication and authorization
- B. It manages the data plane.
- C. It manages the control plane.
- D. It is the centralized network management system.

Answer: ([SHOW ANSWER](#))

NEW QUESTION: 24

Which HTTP status code is the correct response for a request with an incorrect password applied to a REST API session?

- A. HTTP Status Code 200
- B. HTTP Status Code 401
- C. HTTP Status Code: 504
- D. HTTP Status Code 302

Answer: ([SHOW ANSWER](#))

NEW QUESTION: 25

What are two benefits of virtualizing the server with the use of VMs in data center environment?

(Choose two.)

- A. reduced IP and MAC address requirements
- B. speedy deployment
- C. Increased security
- D. smaller Layer 2 domain
- E. reduced rack space, power, and cooling requirements

Answer: B,E ([LEAVE A REPLY](#))

NEW QUESTION: 26

What are two device roles in Cisco SD-Access fabric? (Choose two.)

- A. core switch
- B. border node
- C. vBond controller
- D. access switch
- E. edge node

Answer: ([SHOW ANSWER](#))

NEW QUESTION: 27

Which statement about Cisco Express Forwarding is true?

- A. It uses a fast cache that is maintained in a router data plane.
- B. The CPU of a router becomes directly involved with packet-switching decisions.
- C. maintains two tables in the data plane the FIB and adjacency table.
- D. It makes forwarding decisions by a process that is scheduled through the IOS scheduler.

Answer: ([SHOW ANSWER](#))

NEW QUESTION: 28

Which DHCP option helps lightweight APs find the IP address of a wireless LAN controller?

- A. Option 43
- B. Option 150
- C. Option 67
- D. Option 60

Answer: ([SHOW ANSWER](#))

NEW QUESTION: 29

Refer to the exhibit.

```
Extended IP access list EGRESS
10 permit ip 10.0.0.0 0.0.0.255 any
|
<Output Omitted>
|
interface GigabitEthernet0/0
 ip address 209.165.200.225 255.255.255.0
 ip access-group EGRESS out
 duplex auto
 speed auto
 media-type rj45
|
```

An engineer must block all traffic from a router to its directly connected subnet 209.165.200.0/24. The engineer applies access control list EGRESS in the outbound direction on the GigabitEthernet0/0 interface of the router. However, the router can still ping hosts on the 209.165.200.0/24 subnet. Which explanation of this behavior is true?

- A. Only standard access control lists can block traffic from a source IP address.
- B. After an access control list is applied to an interface, that interface must be shut and no shut for the access control list to take effect.
- C. Access control lists that are applied outbound to a router interface do not affect traffic that is sourced from the router.
- D. The access control list must contain an explicit deny to block traffic from the router.

Answer: ([SHOW ANSWER](#))

NEW QUESTION: 30

Which two descriptions of FlexConnect mode for Cisco APs are true? (Choose two.)

- A. APs that operate in FlexConnect mode cannot detect rogue APs
- B. FlexConnect mode is a feature that is designed to allow specified CAPWAP-enabled APs to exclude themselves from managing data traffic between clients and infrastructure.
- C. FlexConnect mode is a wireless solution for branch office and remote office deployments

D. FlexConnect mode is used when the APs are set up in a mesh environment and used to bridge between each other.

E. When connected to the controller, FlexConnect APs can tunnel traffic back to the controller

Answer: B,E ([LEAVE A REPLY](#))

NEW QUESTION: 31

Which algorithms are used to secure REST API from brute attacks and minimize the impact?

A. SHA-1, SHA-256, and SHA-512

B. SHA-512 and SHA-384

C. PBKDF2, BCrypt, and SCrypt

D. MD5 algorithm-128 and SHA-384

Answer: ([SHOW ANSWER](#))

Valid 350-401 Dumps shared by ExamDiscuss.com for Helping Passing 350-401 Exam! ExamDiscuss.com now offer the **newest 350-401 exam dumps**, the ExamDiscuss.com 350-401 exam **questions have been updated** and **answers have been corrected** get the **newest** ExamDiscuss.com 350-401 dumps with Test Engine here:

<https://www.examdiscuss.com/Cisco/exam/350-401/premium/> (382 Q&As Dumps, **35%OFF**

Special Discount Code: [freecram](#))

NEW QUESTION: 32

Which method creates an EEM applet policy that is registered with EEM and runs on demand or manually?

A. event manager applet ondemand

event none

action 1.0 syslog priority critical msg 'This is a message from ondemand'

B. event manager applet ondemand

event register

action 1.0 syslog priority critical msg 'This is a message from ondemand'

C. event manager applet ondemand

action 1.0 syslog priority critical msg 'This is a message from ondemand'

D. event manager applet ondemand

event manual

action 1.0 syslog priority critical msg 'This is a message from ondemand'

Answer: ([SHOW ANSWER](#))

NEW QUESTION: 33

Drag and drop the characteristics from the left onto the correct routing protocol types on the right.



Answer:



Explanation

OSPF: SEGMENT, LINK STATE, TABLES

EIGRP: UNEQUAL PATH, DISTANCE VECTOR, METRIC



NEW QUESTION: 34

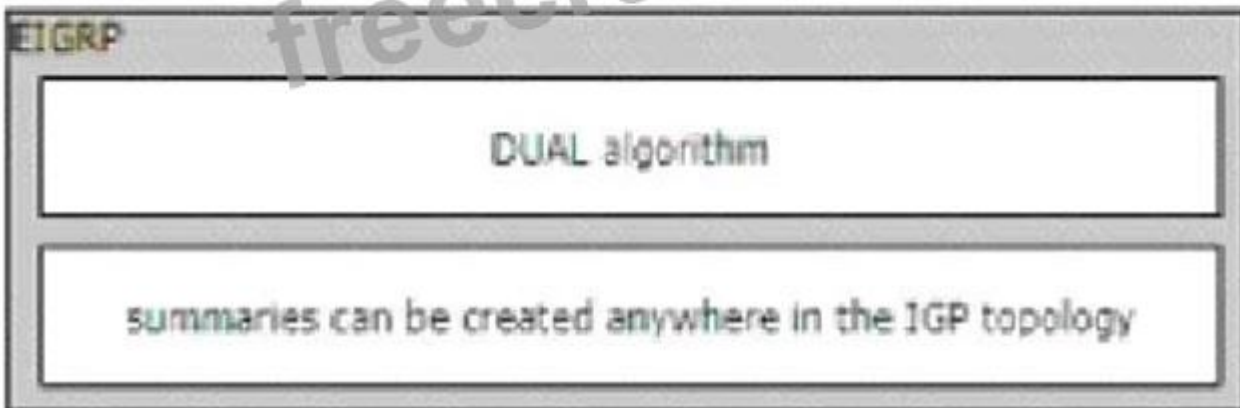
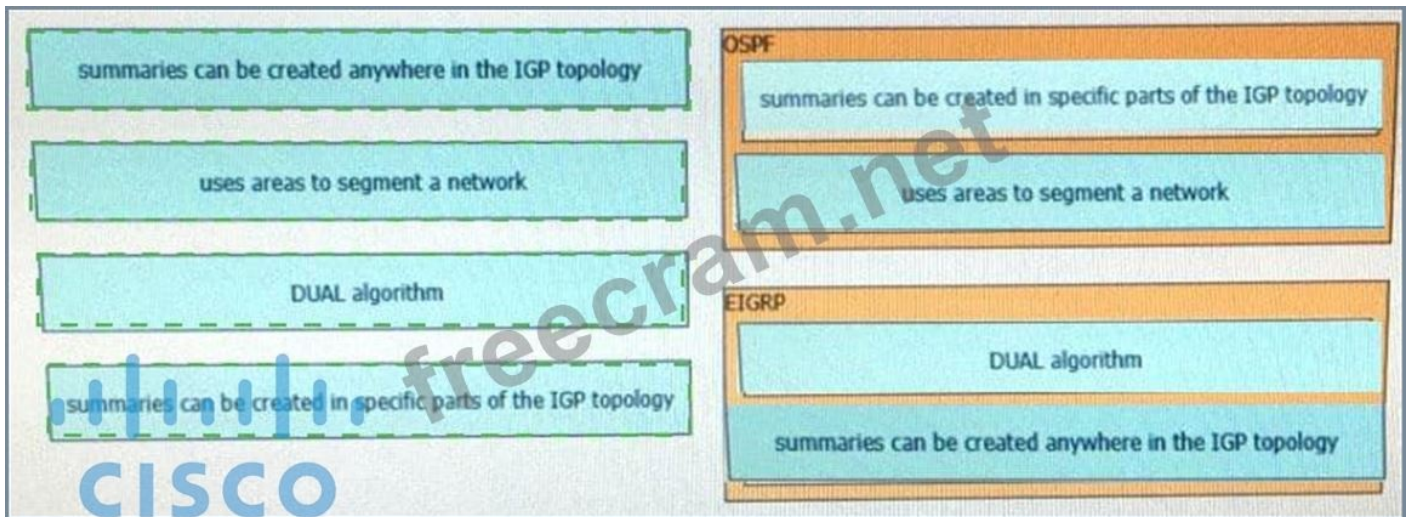
Drag the drop the description from the left onto the routing protocol they describe on the right.

OSPF

EIGRP

CISCO

Answer:



NEW QUESTION: 35

What is the structure of a JSON web token?

- A. payload and signature
- B. header and payload
- C. three parts separated by dots: header payload, and signature
- D. three parts separated by dots: version header and signature

Answer: ([SHOW ANSWER](#))

NEW QUESTION: 36

Which OSPF networks types are compatible and allow communication through the two peering devices?

- A. broadcast to point-to-point
- B. point-to-multipoint to broadcast
- C. point-to-multipoint to nonbroadcast
- D. broadcast to nonbroadcast

Answer: ([SHOW ANSWER](#))

NEW QUESTION: 37

Drag and drop the description from the left onto the correct QoS components on the right.

causes TCP retransmissions when traffic is dropped

buffers excessive traffic

introduces no delay and jitter

introduces delay and jitter

drops excessive traffic

typically delays, rather than drops traffic

Traffic Policing

Traffic Shaping

Answer:

causes TCP retransmissions when traffic is dropped

buffers excessive traffic

introduces no delay and jitter

introduces delay and jitter

drops excessive traffic

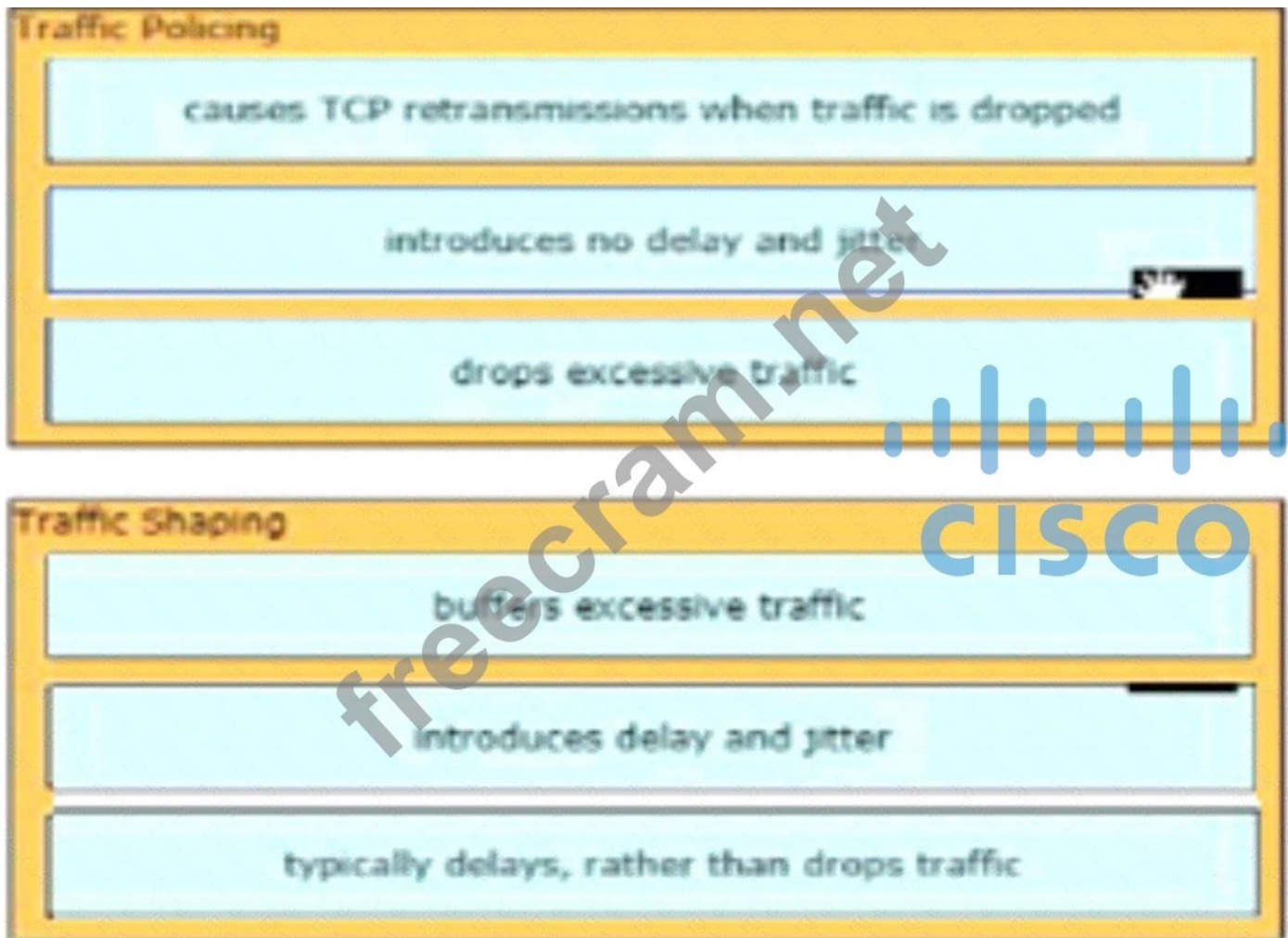
typically delays, rather than drops traffic

Traffic Policing

Traffic Shaping

Explanation

Traffic Policing: Drops excessive Traffic, causes TCP retransmissions, introduce no delay/jitter
Shaping: buffers, excessive traffic, introduce delay and jitter, typically delays, rather than drops traffic



NEW QUESTION: 38

What is a benefit of deploying an on-premises infrastructure versus a cloud infrastructure deployment?

- A. less power and cooling resources needed to run infrastructure on-premises
- B. faster deployment times because additional infrastructure does not need to be purchased
- C. ability to quickly increase compute power without the need to install additional hardware
- D. lower latency between systems that are physically located near each other

Answer: D ([LEAVE A REPLY](#))

NEW QUESTION: 39

Which method does the enable secret password option use to encrypt device passwords?

- A. AES
- B. PAP
- C. MD5
- D. CHAP

Answer: ([SHOW ANSWER](#)**)**

NEW QUESTION: 40

Which statement describes the IP and MAC allocation requirements for virtual machines on types 1 hypervisors?

- A. Each virtual machine requires a unique IP address but shares the MAC address with the physical server
- B. Each virtual machine requires a unique IP and MAC addresses to be able to reach to other nodes.
- C. Each virtual machine requires a unique MAC address but shares the IP address with the physical server.
- D. Each virtual machines requires a unique IP address but shares the MAC address with the address of the physical server.

Answer: ([SHOW ANSWER](#))

NEW QUESTION: 41

Based on this interface configuration, what is the expected state of OSPF adjacency?

```
R1:
interface GigabitEthernet0/1
 ip address 192.0.2.1 255.255.255.252
 ip ospf 1 area 0
 ip ospf hello-interval 2
 ip ospf cost 1
end

R2:
interface GigabitEthernet0/1
 ip address 192.0.2.2 255.255.255.252
 ip ospf 1 area 0
 ip ospf cost 500
end
```

- A. Full on both routers
- B. 2WAY/DROTHER on both routers
- C. FULL/BDR on R1 and FULL/BDR on R2
- D. not established

Answer: ([SHOW ANSWER](#))

NEW QUESTION: 42

Refer to the exhibit.



A port channel is configured between SW2 and SW3. SW2 is not running a Cisco operating system. When all physical connections are made, the port channel does not establish. Based on the configuration excerpt of SW3, what is the cause of the problem?

- A. The port-channel trunk is not allowing the native VLAN.
- B. The port-channel should be set to auto.
- C. The port-channel interface load balance should be set to src-mac
- D. The port channel on SW2 is using an incompatible protocol.

Answer: ([SHOW ANSWER](#))

NEW QUESTION: 43

When using TLS for syslog, which configuration allows for secure and reliable transportation of messages to its default port?

- A. logging host 10.2.3.4 vrf mgmt transport udp port 514
- B. logging host 10.2.3.4 vrf mgmt transport udp port 6514
- C. logging host 10.2.3.4 vrf mgmt transport tcp port 6514
- D. logging host 10.2.3.4 vrf mgmt transport tcp port 514

Answer: ([SHOW ANSWER](#))

NEW QUESTION: 44

A company plans to implement intent-based networking in its campus infrastructure. Which design facilitates a migrate from a traditional campus design to a programmer fabric designer?

- A. routed access
- B. two-tier
- C. Layer 2 access
- D. three-tier

Answer: ([SHOW ANSWER](#))

NEW QUESTION: 45

Refer to the exhibit.



A network engineer is configuring OSPF between router R1 and router R2. The engineer must ensure that a DR/BDR election does not occur on the Gigabit Ethernet interfaces in area 0. Which configuration set accomplishes this goal?

A)

```
R1(config-if)interface Gi0/0
R1(config-if)ip ospf network point-to-point

R2(config-if)interface Gi0/0
R2(config-if)ip ospf network point-to-point
```

B)

```
R1(config-if)interface Gi0/0
R1(config-if)ip ospf network broadcast

R2(config-if)interface Gi0/0
R2(config-if)ip ospf network broadcast
```

C)

```
R1(config-if)interface Gi0/0
R1(config-if)ip ospf database-filter all out

R2(config-if)interface Gi0/0
R2(config-if)ip ospf database-filter all out
```

D)

```
R1(config-if)#interface Gi0/0
R1(config-if)#ip ospf priority 1

R2(config-if)#interface Gi0/0
R2(config-if)#ip ospf priority 1
```

- A. Option B
- B. Option A
- C. Option C
- D. Option D

Answer: ([SHOW ANSWER](#))

NEW QUESTION: 46

Refer to the exhibit.

```
access-list 1 permit 172.16.1.0 0.0.0.255
ip nat inside source list 1 interface gigabitethernet0/0 overload
```

The inside and outside interfaces in the NAT configuration of this device have been correctly identified. What is the effect of this configuration?

- A. dynamic NAT
- B. static NAT
- C. PAT
- D. NAT64

Answer: C ([LEAVE A REPLY](#))

Valid 350-401 Dumps shared by ExamDiscuss.com for Helping Passing 350-401 Exam! ExamDiscuss.com now offer the **newest 350-401 exam dumps**, the ExamDiscuss.com 350-401 exam **questions have been updated** and **answers have been corrected** get the **newest** ExamDiscuss.com 350-401 dumps with Test Engine here:

<https://www.examdiscuss.com/Cisco/exam/350-401/premium/> (382 Q&As Dumps, **35%OFF**

Special Discount Code: **freecram**)

NEW QUESTION: 47

Which feature is supported by EIGRP but is not supported by OSPF?

- A. route summarization
- B. unequal-cost load balancing
- C. equal-cost load balancing
- D. route filtering

Answer: ([SHOW ANSWER](#))

NEW QUESTION: 48

Which statement explains why Type 1 hypervisor is considered more efficient than Type 2 hypervisor?

- A. Type 1 hypervisor runs directly on the physical hardware of the host machine without relying on the underlying OS
- B. Type 1 hypervisor is the only type of hypervisor that supports hardware acceleration techniques
- C. Type 1 hypervisor relies on the existing OS of the host machine to access CPU, memory, storage, and network resources.
- D. Type 1 hypervisor enables other operating systems to run on it

Answer: ([SHOW ANSWER](#))

NEW QUESTION: 49

What is the difference between a RIB and a FIB?

- A. The RIB maintains a mirror image of the FIB
- B. The RIB is used to make IP source prefix-based switching decisions
- C. The FIB is where all IP routing information is stored
- D. The FIB is populated based on RIB content

Answer: ([SHOW ANSWER](#))

NEW QUESTION: 50

Which technology provides a secure communication channel for all traffic at Layer 2 of the OSI model?

- A. Cisco Trustsec
- B. IPsec
- C. MACsec
- D. SSL

Answer: C ([LEAVE A REPLY](#))

NEW QUESTION: 51

An engineer is describing QoS to a client. Which two facts apply to traffic policing? (Choose two.)

- A. Policing should be performed as close to the source as possible.
- B. Policing should be performed as close to the destination as possible.
- C. Policing typically delays the traffic, rather than drops it.
- D. Policing drops traffic that exceeds the defined rate.
- E. Policing adapts to network congestion by queuing excess traffic.

Answer: ([SHOW ANSWER](#))

NEW QUESTION: 52

What does the LAP send when multiple WLCs respond to the

CISCO_CAPWAP-CONTROLLER.localdomain hostname during the CAPWAP discovery and join process?

- A. Unicast discovery request to the first WLS that resolves the domain name
- B. broadcast discover request
- C. unicast discovery request to each WLC
- D. join request to all the WLCs

Answer: ([SHOW ANSWER](#))

Valid 350-401 Dumps shared by ExamDiscuss.com for Helping Passing 350-401 Exam! ExamDiscuss.com now offer the **newest 350-401 exam dumps**, the ExamDiscuss.com 350-401 exam **questions have been updated** and **answers have been corrected** get the **newest** ExamDiscuss.com 350-401 dumps with Test Engine here:

<https://www.examdiscuss.com/Cisco/exam/350-401/premium/> (**382** Q&As Dumps, **35%OFF**

Special Discount Code: [freecram](#))