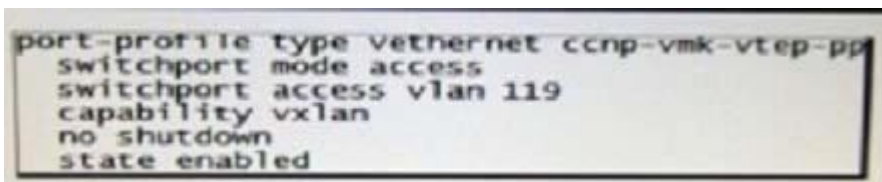


## Cisco.300-460.v2018-06-05.q58

Exam Code:	300-460
Exam Name:	Implementing and Troubleshooting the Cisco Cloud Infrastructure
Certification Provider:	Cisco
Free Question Number:	58
Version:	v2018-06-05
# of views:	697
# of Questions views:	16028
<a href="https://www.freecram.net/torrent/Cisco.300-460.v2018-06-05.q58.html">https://www.freecram.net/torrent/Cisco.300-460.v2018-06-05.q58.html</a>	

### NEW QUESTION: 1



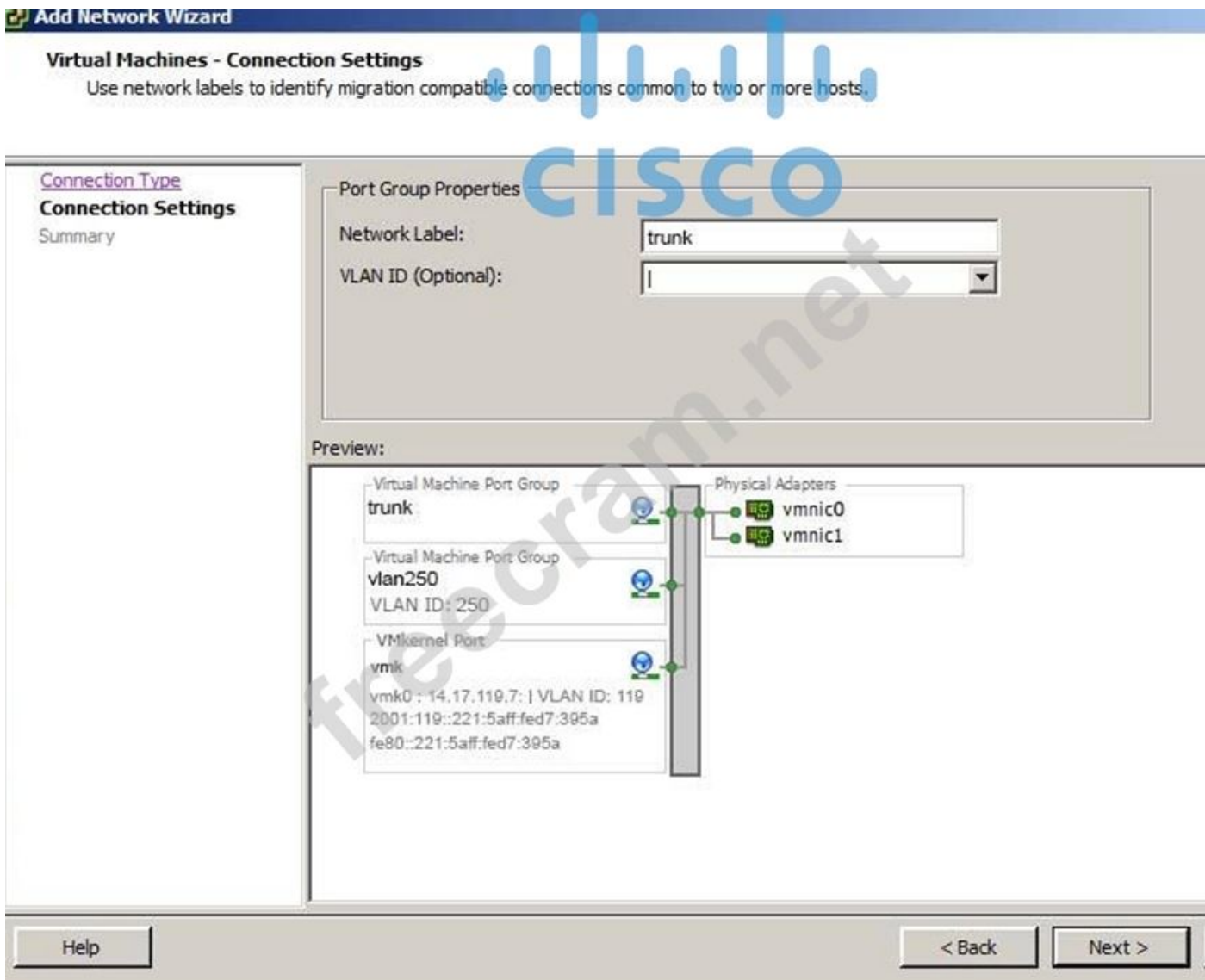
```
port-profile type vethernet ccnp-vmk-vtep-pp
switchport mode access
switchport access vlan 119
capability vxlan
no shutdown
state enabled
```

Refer to the exhibit. Which three commands complete the configuration for this Cisco Nexus 1000V port profile that is assigned to a vmkernel used for VSM control plane? (Choose three.)

- A. mtu 9000
- B. vmware port-group
- C. switchport mode trunk
- D. service-policy type qos output vmk-control
- E. system vlan 119
- F. capability 13control

Answer: B,E,F ([LEAVE A REPLY](#))

### NEW QUESTION: 2



Refer to the exhibit. You have been asked to create a trunking (802.1 q) port group on a VMware vSwitch. Which number must be assigned as the VLAN ID to trunk all VLANs?

- A. 0
- B. 1-4095
- C. 4095
- D. 1

Answer: ([SHOW ANSWER](#))

### NEW QUESTION: 3

Which two statements about management IP pools are true? (Choose two.)

- A. All IP addresses in the in the out of band management IP pool must be in the same subnet as the IP address of the fabric interconnect.
- B. The management IP pool can be created under Physical > Storage in Cisco UCS Director
- C. The management IP pool must contain any IP addresses that have been assigned as static IP addresses for a server or service profile.
- D. The number of IP addresses in the pool is not required when creating management IP pools.

E. IP addresses in the management IP pool are reserved for external access that terminates in the Cisco Integrated Management Controller on a server

Answer: ([SHOW ANSWER](#))

**NEW QUESTION: 4**

Which three operations can a cloud administrator perform when using the vSphere Client configuration tab? (Choose three.)

- A. Configure the primary/secondary DNS server
- B. Configure datastore backups
- C. View target initiators and zones
- D. View the processor and memory configuration of the ESX host
- E. Configure the host as NTP client
- F. Configure zoning

Answer: ([SHOW ANSWER](#))

**NEW QUESTION: 5**

In which two ways can a cloud administrator dynamically increase a VMFS datastore? (Choose two.)

- A. Rescan all hosts to see the current storage and modify the extent.
- B. Add an extent (LUN).
- C. Expand the datastore within the extent.
- D. Add a new local storage disk on ESXi and restart VMFS service.

Answer: ([SHOW ANSWER](#))

**NEW QUESTION: 6**

Which option describes the purpose of system VLANs as used in a Cisco Nexus 1000V Switches?

- A. is the equivalent of 802.1q tagging in the Cisco Nexus 1000V
- B. supplements pVLAN functionality in a virtualized environment
- C. allows the VSM to send opaque data to all hosts under management
- D. enables interface connectivity before an interface is programmed via the control plane

Answer: ([SHOW ANSWER](#))

**NEW QUESTION: 7**

Which vCenter authentication service secures the VMware Cloud infrastructure platform?

- A. authentication directory service
- B. secure token
- C. vCenter cloud infrastructure service
- D. single sign-on

Answer: ([SHOW ANSWER](#))

**NEW QUESTION: 8**

Which two statements about Fibre Channel zoning in Cisco UCS are true? (Choose two.)

- A. Cisco UCS does not support zoning.
- B. Zoning can be enabled at the fabric level in switch mode.
- C. Zoning is configured on a per-VSAN basis.
- D. Zoning is configured on a per fabric basis.
- E. You cannot enable zoning at the fabric interconnect level.

**Answer: B,D ([LEAVE A REPLY](#))**

#### **NEW QUESTION: 9**

Which four fields are needed when creating a WWPN pool in Cisco UCS Director? (Choose four)

- A. the first and last WWPN address in the block
- B. the number of WWPN addresses in the block
- C. a unique name for the initiator
- D. the first WWPN address in the block
- E. the WWN for the initiator
- F. a unique name for the pool
- G. the last WWPN address in the block
- H. a description for the pool

**Answer: ([SHOW ANSWER](#))**

Explanation/Reference:

Reference: [http://www.cisco.com/c/en/us/td/docs/unified\\_computing/ucs/sw/gui/config/guide/2-2/b\\_UCSM\\_GUI\\_Configuration\\_Guide\\_2\\_2/b\\_UCSM\\_GUI\\_Configuration\\_Guide\\_2\\_2\\_chapter\\_011001.html#task\\_8717496137259896828](http://www.cisco.com/c/en/us/td/docs/unified_computing/ucs/sw/gui/config/guide/2-2/b_UCSM_GUI_Configuration_Guide_2_2/b_UCSM_GUI_Configuration_Guide_2_2_chapter_011001.html#task_8717496137259896828)

#### **NEW QUESTION: 10**

- A. local disk
- B. CD-ROM
- C. PXE
- D. LAN boot
- E. SAN
- F. USB

**Answer: ([SHOW ANSWER](#))**

Explanation/Reference:

Reference: [http://www.cisco.com/c/en/us/td/docs/unified\\_computing/ucs/sw/gui/config/guide/1-0-2/b\\_GUI\\_Config\\_Guide/GUI\\_Config\\_Guide\\_chapter25.pdf](http://www.cisco.com/c/en/us/td/docs/unified_computing/ucs/sw/gui/config/guide/1-0-2/b_GUI_Config_Guide/GUI_Config_Guide_chapter25.pdf)

#### **NEW QUESTION: 11**

An administrator is troubleshooting a virtual switch that does not show up when it is added to the host using the port-profile management snap-in. Which action is the next step?

- A. Enable SR-IOV for the virtual switch inside Hyper-V
- B. Add drivers for the virtual switch
- C. Reboot the server

**D.** Enable VMBus for the parent partition and the virtual machine

**Answer:** ([SHOW ANSWER](#))

Explanation/Reference:

Reference: [http://www.cisco.com/c/en/us/td/docs/unified\\_computing/ucs/sw/vm\\_fex/hyperv/gui/config\\_guide/2-1/b\\_GUI\\_Hyper-V\\_VM-FEX\\_UCSM\\_Configuration\\_Guide/b\\_GUI\\_Hyper-V\\_VM-FEX\\_UCSM\\_Configuration\\_Guide\\_chapter\\_0101.html#task\\_FD3156BC3C7F48FBFF728E8A824E81CA](http://www.cisco.com/c/en/us/td/docs/unified_computing/ucs/sw/vm_fex/hyperv/gui/config_guide/2-1/b_GUI_Hyper-V_VM-FEX_UCSM_Configuration_Guide/b_GUI_Hyper-V_VM-FEX_UCSM_Configuration_Guide_chapter_0101.html#task_FD3156BC3C7F48FBFF728E8A824E81CA)

### **NEW QUESTION: 12**

A Cisco UCS Director administrator is attempting to view log details for a service request. Which option lists the steps that accomplish this task?

**A.** On the menu bar, choose Organizations > My Approvals

Click the Service Requests tab.

Choose the service request.

Click View Details, and choose the Log tab.

**B.** On the menu bar, choose Organizations > Service Requests

From the left panel, choose a user group.

Click the Service Request tab.

Choose the service request.

Click View Details, and choose the Log tab.

**C.** On the menu bar, choose Organizations > My Approvals

Click the Service Requests tab.

Choose the service request.

Click View Details, and choose the Input/Output tab.

**D.** On the menu bar, choose Organizations > Virtual Resources

From the left panel, choose a user group.

Click the Service Request tab.

Choose a service request.

Click View Details, and choose the Input/Output tab.

**Answer:** ([SHOW ANSWER](#))

Explanation/Reference:

Reference: [http://www.cisco.com/c/en/us/td/docs/unified\\_computing/ucs/ucs-director/troubleshooting-guide/b\\_UCS\\_Director\\_Troubleshooting\\_guide/b\\_UCS\\_Director\\_Troubleshooting\\_guide\\_chapter\\_01011.html#task\\_B7A72B55419B455D9C1B7A93CF40633A](http://www.cisco.com/c/en/us/td/docs/unified_computing/ucs/ucs-director/troubleshooting-guide/b_UCS_Director_Troubleshooting_guide/b_UCS_Director_Troubleshooting_guide_chapter_01011.html#task_B7A72B55419B455D9C1B7A93CF40633A)

### **NEW QUESTION: 13**

Which three boot policies can be created for Cisco UCS Manager in Cisco UCS Director? (Choose three.)

**A.** VLAN boot

**B.** UEFI secure boot

**C.** iSCSI boot

**D.** NFS boot

E. SAN boot

F. FCOE boot

**Answer: (SHOW ANSWER)**

Explanation/Reference:

Explanation:

Various boot options are:

SAN Boot

▪

LAN Boot

▪

Local Disk Boot

▪

Virtual Media Boot

▪

iSCSI Boot

▪

#### **NEW QUESTION: 14**

Cisco USB Director provides many tools to help diagnose and resolve common problems. Which option describes the purpose of the system information tool?

**A.** to view basic and advanced system information, including the license status, database tables version, recourse usage, logs, and debugging processes for troubleshooting

**B.** to view product support information

**C.** to execute JavaScript functions and to define variables and functions, when using cloupia scripts

**D.** to troubleshoot problems related to various administrative tasks such as connectivity, configuration, and status

**Answer: (SHOW ANSWER)**

Explanation/Reference:

Explanation:

Basic system information includes the version, uptimes, service status, system license status, usage, compute accounts status, compute server status, storage account status, system catalogs, network device status, and cloud status.

The advanced system information includes basic system information, and database tables summary, product configuration, top process information, and information on processors, memory, disks, log files, network, and login. You can also view the system task status, cloud inventory, and monitoring status.

#### **NEW QUESTION: 15**

Which three options describe the correct methods to install the Cisco Nexus 1000V VEM (VIB) software module on the VMware ESXi hypervisor? (Choose three.)

**A.** using the "Add Host to vSphere Distributed Switch" dialog on the vSphere Network tab when Update Manager is installed

**B.** `esxcli software vib install -n/tmp/Cisco_bootbank_cisco-vem -v173-esx_5.2.1.3.1.4.0-3.2.1.vib`

**C.** executing the Deploy-Nexus 1000V-VSEM.ps1 script

**D.** `esxcli software vib install -v/tmp/Cisco_bootbank_cisco-vem -v173-esx_5.2.1.3.1.4.0-3.2.1.vib`

E. using the Host Selection dialog box in Cisco Virtual Switch Update Manager

F. creating a baseline group in VMware Update Manager

**Answer:** ([SHOW ANSWER](#))

Explanation/Reference:

Reference: [http://www.cisco.com/c/en/us/td/docs/switches/datacenter/nexus1000/sw/5\\_2\\_1\\_s\\_v\\_3\\_1\\_4/install/guide/b\\_Cisco\\_N1KV\\_VMware\\_Install\\_and\\_Upgrade\\_Guide\\_521SV314/b\\_Cisco\\_N1KV\\_VMware\\_Install\\_and\\_Upgrade\\_Guide\\_521SV314a\\_chapter\\_01.html#task\\_F02BD77701B345D9B34A9332AA7C179F](http://www.cisco.com/c/en/us/td/docs/switches/datacenter/nexus1000/sw/5_2_1_s_v_3_1_4/install/guide/b_Cisco_N1KV_VMware_Install_and_Upgrade_Guide_521SV314/b_Cisco_N1KV_VMware_Install_and_Upgrade_Guide_521SV314a_chapter_01.html#task_F02BD77701B345D9B34A9332AA7C179F)

### NEW QUESTION: 16

Which three options does the Cisco UCS Manager boot policy determine? (Choose three.)

A. initiator port range

B. location from which the server boots

C. global boot device priority

D. initiator and target ports

E. selection of the boot device

F. order in which boot devices are invoked

**Answer:** ([SHOW ANSWER](#))

**Valid 300-460 Dumps** shared by ExamDiscuss.com for Helping Passing 300-460 Exam!

ExamDiscuss.com now offer the **newest 300-460 exam dumps**, the ExamDiscuss.com 300-460 exam **questions have been updated** and **answers have been corrected** get the **newest**

ExamDiscuss.com 300-460 dumps with Test Engine here:

<https://www.examdumps.com/Cisco/exam/300-460/premium/> (132 Q&As Dumps, **35%OFF** Special

Discount Code: **freecram**)

### NEW QUESTION: 17

Which two statements about virtual networks in a Cisco-powered private cloud are true? (Choose two.)

A. After the last VM is shutdown, the associated virtual network is gone for garbage collection.

B. Virtual networks are abstractions whose state is stored in the orchestration layer.

C. The last vNIC can be deleted issuing the command no interface virtual.

D. N1KV supports dynamic routing on virtual networks.

E. Issue the show module command in virtual supervisor module to view virtual network mapping with VM.

**Answer:** D,E ([LEAVE A REPLY](#))

### NEW QUESTION: 18

A Cisco USCM administrator is creating a boot policy. Which option lists the steps needed to accomplish this task?

- A.** In the Navigation pane, click the Equipment tab.  
Expand Equipment > Rack-Mounts > Servers > Boot Policies.  
Right-click Boot Orders and select Create Boot Policy.
- B.** In the Navigation pane, click the Servers tab.  
On the Servers tab, expand Servers > Policies.  
Click Boot Security.  
Click Modify Boot Policy.
- C.** In the Navigation pane, click the Servers tab.  
On the Servers tab, expand Servers > Policies.  
Right-click Boot Policies and select Create Boot Policy.
- D.** In the Navigation pane, click the Servers tab.  
On the Servers tab, expand Servers > Policies.  
Click Boot Order and the Modify Boot Policy wizard displays.  
Click Modify Boot Policy.

**Answer:** ([SHOW ANSWER](#))

#### **NEW QUESTION: 19**

Which option describes the difference between in-band and out-of-band IP management pool in Cisco UCS?

- A.** An out-of-band network is reachable over the Fabric Interconnect server interfaces, and in-band network is reachable over uplink interfaces.
- B.** An out-of-band network is reachable over the Fabric Interconnect mgmt0 interfaces, and in-band network is reachable over uplink interfaces.
- C.** An out-of-band network is the only method to connect with the Cisco IMC blade.
- D.** An in-band network policy requires twice the IP address space of an out-of-band policy.

**Answer:** ([SHOW ANSWER](#))

#### **NEW QUESTION: 20**

- A.** channel-group mode on sub-group cdp
- B.** channel-group auto mode on mac-pinning
- C.** channel-group auto mode active
- D.** channel-group mode on mac-pinning

**Answer:** ([SHOW ANSWER](#))

Explanation/Reference:

Reference: [http://www.cisco.com/c/en/us/products/collateral/switches/nexus-1000v-switch-vmware-vsphere/white\\_paper\\_c11-558242.html](http://www.cisco.com/c/en/us/products/collateral/switches/nexus-1000v-switch-vmware-vsphere/white_paper_c11-558242.html)

#### **NEW QUESTION: 21**

You have been asked to configure a virtual fiber channel interface. Which information is needed to complete this task?

- A.** Fibre Channel ID and VSAN database key

- B. VSAN ID and Fibre Channel interface
- C. active zoneset and VSAN ID
- D. VLAN ID, VSAN ID, and Ethernet interface number

**Answer:** ([SHOW ANSWER](#))

Explanation/Reference:

Reference: Check section "Creating a VFC" of the link; [http://www.cisco.com/c/en/us/td/docs/unified\\_computing/ucs/ucs-director/network-devices-mgmt-guide/b\\_Network\\_Devices\\_Management\\_Guide/b\\_Network\\_Devices\\_Management\\_Guide\\_chapter\\_01001.html](http://www.cisco.com/c/en/us/td/docs/unified_computing/ucs/ucs-director/network-devices-mgmt-guide/b_Network_Devices_Management_Guide/b_Network_Devices_Management_Guide_chapter_01001.html)

#### **NEW QUESTION: 22**

A Cisco UCS Director administrator is installing a Bare Metal Agent and is in the process of adding an NFS mount point. Which Administration menu option does the administrator choose to add an NFS mount point?

- A. Physical Accounts
- B. Compute Accounts
- C. Bare Metal Accounts
- D. Storage Accounts

**Answer:** ([SHOW ANSWER](#))

#### **NEW QUESTION: 23**

In which topology should Cisco UCS vNIC Fabric Failover be enabled?

- A. only on vNICs when an operating system level teaming driver is unavailable
- B. on every vNIC on every service profile
- C. only on vNICs assigned to hypervisors
- D. only on vNICs assigned to bare metal operating systems

**Answer:** ([SHOW ANSWER](#))

#### **NEW QUESTION: 24**

A Cisco UCS Director administrator is viewing the workflow input and output status of a service request. Which option lists the steps that accomplish this task?

- A. On the menu bar, choose Organizations > My Approvals.  
Choose a user group.  
Click the Service Request tab.  
Choose a service request.  
Click View Details, and choose the Log tab.
- B. On the menu bar, choose Organizations > Virtual Resources.  
Click the Service Requests tab.  
Choose the service request.  
Click View Details, and choose the Input/Output tab.
- C. On the menu bar, choose Organizations > Service Requests.  
Click the Service Requests tab.

Choose the service request.

Click View Details, and choose the Input/Output tab.

**D.** On the menu bar, choose Organizations > Service Requests.

Choose a user group.

Click the Service Request tab.

Choose a service request.

Click View Details, and choose the Log tab.

**Answer:** ([SHOW ANSWER](#))

Explanation/Reference:

Reference: [http://www.cisco.com/c/en/us/td/docs/cloud-systems-management/intercloud-fabric/2-1-2/user-guide/icf/b\\_Cisco\\_Intercloud\\_Fabric\\_User\\_Guide\\_Release\\_2\\_1\\_2/b\\_Cisco\\_Intercloud\\_Fabric\\_User\\_Guide\\_Release\\_2\\_0\\_chapter\\_01000.html](http://www.cisco.com/c/en/us/td/docs/cloud-systems-management/intercloud-fabric/2-1-2/user-guide/icf/b_Cisco_Intercloud_Fabric_User_Guide_Release_2_1_2/b_Cisco_Intercloud_Fabric_User_Guide_Release_2_0_chapter_01000.html)

### **NEW QUESTION: 25**

Which option lists the default methods that are needed to access a Cisco UCS C-Series via its Lights-Out Management? (Choose two.)

**A.** HTTPS

**B.** FTP

**C.** SSH

**D.** Telnet

**Answer:** ([SHOW ANSWER](#))

### **NEW QUESTION: 26**

A Cisco UCS Director administrator is trying to mapping policies. Where can this task be accomplished?

**A.** Virtual > Physical Infrastructure Policies

**B.** Virtual > Virtual/Hypervisor Policies

**C.** Policies > Physical Infrastructure Policies

**D.** Policies > Virtual/Hypervisor Policies

**Answer:** ([SHOW ANSWER](#))

Explanation/Reference:

Reference: [http://www.cisco.com/c/en/us/td/docs/unified\\_computing/ucs/ucs-director/vsphere-mgmt-guide/5-0/b\\_UCS\\_Director\\_VMware\\_vSphere\\_Management\\_Guide\\_50/b\\_UCS\\_Director\\_VMware\\_vSphere\\_Management\\_Guide\\_50\\_chapter\\_0100.html#topic\\_736267F57B684D349EBA0CF77B2E17C6](http://www.cisco.com/c/en/us/td/docs/unified_computing/ucs/ucs-director/vsphere-mgmt-guide/5-0/b_UCS_Director_VMware_vSphere_Management_Guide_50/b_UCS_Director_VMware_vSphere_Management_Guide_50_chapter_0100.html#topic_736267F57B684D349EBA0CF77B2E17C6)

### **NEW QUESTION: 27**

A Cisco UCSM administrator is tasked with modifying the boot order in a service profile. Which option lists the steps required to accomplish this task?

**A.** In the Navigation pane, click the Servers tab.

On the Servers tab, expand Servers > Service Profiles.

Click the service profile for which you want to change boot order.

Click Boot Order Wizard to change the existing boot policy.

**B.** In the Navigation pane, click the Servers tab.

On the Servers tab, expand Servers > Service Profiles.

Click the service profile for which you want to change boot order.

Click Boot Order and the Modify Boot Policy wizard displays.

Change the existing boot policy.

**C.** In the Navigation pane, click the Servers tab.

On the Servers tab, expand Servers > Service Profiles.

Click the service profile for which you want to change boot order.

Click Modify Boot Policy to change the existing boot policy.

**D.** In the Navigation pane, click the Servers tab.

On the Servers tab, expand Servers > Service Profiles.

Click the service profile for which you want to change boot order.

Click Boot Security.

Click Modify Boot Policy to change the existing policy.

**Answer:** ([SHOW ANSWER](#))

#### **NEW QUESTION: 28**

Which option describes a function of a target in Storage Area Networking?

**A.** provides a storage network consisting of one or more Fibre Channel switches

**B.** consumes storage volumes using a host bus adapter

**C.** starts a connection over the fabric to one or more ports

**D.** delivers storage volumes to the initiators from the storage system

**Answer:** ([SHOW ANSWER](#))

#### **NEW QUESTION: 29**

Which option is the best way to provide templates to end users in Cisco UCS Director?

**A.** Give access to the template.

**B.** Assign the template to the standard catalog.

**C.** Assign the template to the advance catalog.

**D.** Deploy a copied template.

**Answer:** ([SHOW ANSWER](#))

Explanation/Reference:

#### **NEW QUESTION: 30**

**A.** bridge-domain bd-5001

segment id 5001

no segment distribution mac

!

Bridge-domain bd-5002

segment id 5002

```
group 239.1.1.2
B. segment mode multicast
bridge-domain bd-5001
segment id 5001
segment mode unicast-only
!
Bridge-domain bd-5002
segment id 5002
group 239.1.1.2
segment mode multicast
C. segment mode unicast-only
bridge-domain bd-5001
segment id 5001
!
Bridge-domain bd-5002
segment id 5002
group 239.1.1.2
no segment mode unicast-only
D. segment mode unicast-only
bridge-domain bd-5001
segment id 5001
!
Bridge-domain bd-5002
segment id 5002
```

**Answer: (SHOW ANSWER)**

Explanation/Reference:

Reference: [http://www.cisco.com/c/en/us/products/collateral/switches/nexus-7000-series-switches/guide\\_c07-728863.html](http://www.cisco.com/c/en/us/products/collateral/switches/nexus-7000-series-switches/guide_c07-728863.html)

### **NEW QUESTION: 31**

What does the Auto Deploy function of an ESXi host rely on?

- A. DNS
- B. PXE
- C. DHCP
- D. SCP

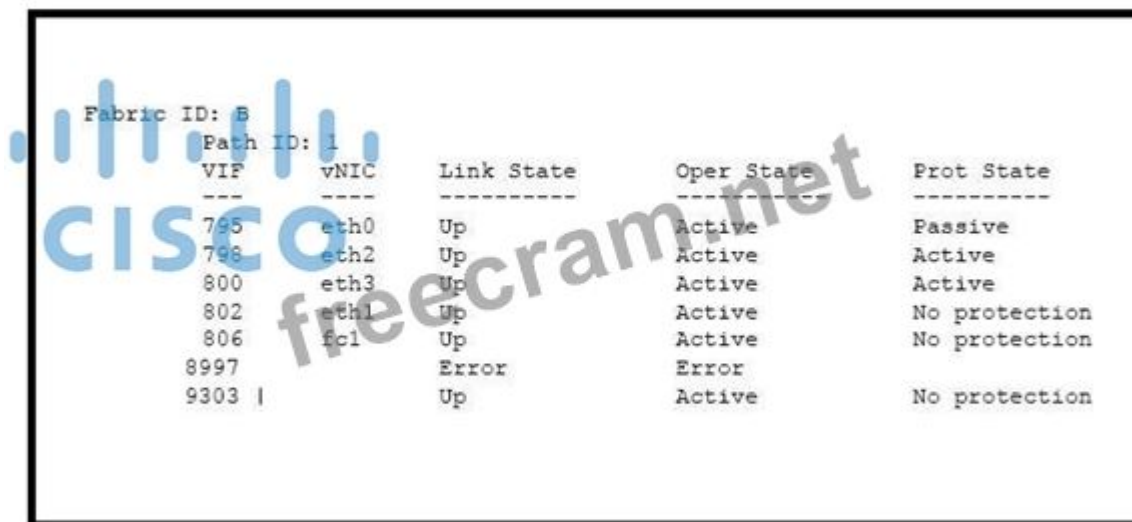
**Answer: (SHOW ANSWER)**

Explanation/Reference:

Reference: <http://blogs.vmware.com/vsphere/2013/03/auto-deploy-stateless-caching-stateless-caching-and-network-isolated-hosts.html>

Valid 300-460 Dumps shared by ExamDiscuss.com for Helping Passing 300-460 Exam!  
ExamDiscuss.com now offer the **newest 300-460 exam dumps**, the ExamDiscuss.com 300-460 exam questions have been updated and answers have been corrected get the newest ExamDiscuss.com 300-460 dumps with Test Engine here:  
<https://www.examdiscuss.com/Cisco/exam/300-460/premium/> (132 Q&As Dumps, **35%OFF Special Discount Code: freecram**)

#### NEW QUESTION: 32



```
Fabric ID: B
Path ID: 1
VIF      vNIC      Link State   Oper State   Prot State
----      -
795      eth0      Up           Active       Passive
796      eth2      Up           Active       Active
800      eth3      Up           Active       Active
802      eth1      Up           Active       No protection
806      fcl       Up           Active       No protection
8997      Error     Error        Error
9303 |    Up           Active       No protection
```

Refer to the exhibit. Cisco UCS Fabric interconnect A and B have identical uplink configurations. Which option describes the problem of Fabric interconnect A?

- A. Ethernet0/11 on Fabric interconnect A is down.
- B. Fabric interconnect A is powered off.
- C. FC2/1 on Fabric interconnect A is unplugged or has been replaced with a GLC-T.
- D. The IOM on Fabric interconnect A was rebooted.

Answer: ([SHOW ANSWER](#))

#### NEW QUESTION: 33

Which four options are required on a DHCP server to enable PXE boot? (Choose four.)

- A. boot server host name (TFTP server hostname or IP address)
- B. subnet mask
- C. DNS server
- D. lease time
- E. domain name
- F. bootfile name
- G. router (Gateway)

Answer: ([SHOW ANSWER](#))

Explanation/Reference:

Reference: Refer to table 1 of the link: [http://www.cisco.com/c/en/us/td/docs/unified\\_computing/ucs/ucs-director/bma-install-config/4-1/b\\_ucsd\\_bma\\_install\\_config\\_guide\\_41/b\\_ucsd\\_bma\\_install\\_config\\_guide\\_41\\_chapter\\_0100.html](http://www.cisco.com/c/en/us/td/docs/unified_computing/ucs/ucs-director/bma-install-config/4-1/b_ucsd_bma_install_config_guide_41/b_ucsd_bma_install_config_guide_41_chapter_0100.html)

**NEW QUESTION: 34**

A Cisco UCSM administrator has been tasked with deploying a new data center. Which two recommendations aid in the ability to associate a service with a server? (Choose two.)

- A. The host control setting for a QoS policy applies to vHBAs only.
- B. You can assign only a QoS policy to a vHBA if the priority setting for that policy is set to fc, which represents the Fibre Channel system class.
- C. Power capping is supported for rack servers. If you include a power control policy in a service profile that is associated with a rack-mount server, the policy is implemented.
- D. The host control setting for a QoS policy applies to vNICs only. It has no effect on a vHBA.

**Answer: (SHOW ANSWER)**

**NEW QUESTION: 35**

Which mechanism is used to find latent failure in memory modules?

- A. sniffing
- B. swapping
- C. paging
- D. scrubbing

**Answer: (SHOW ANSWER)**

Explanation/Reference:

Reference: <http://www.cisco.com/c/dam/en/us/products/collateral/servers-unified-computing/ucs-manager/whitepaper-c11-736116.pdf>

**NEW QUESTION: 36**

Which option lists the number of segments that are supported by VxLAN as standardized in RFC7348 and the number of bytes of overhead that are added to the original frame?

- A. 1 million; 50
- B. 16 million; 50
- C. 1 million; 48
- D. 16 million; 50

**Answer: (SHOW ANSWER)**

Explanation/Reference:

Reference: <https://tools.ietf.org/html/rfc7348>

**NEW QUESTION: 37**

In Cisco UCSM, which two options describe the purpose of a service profile template? (Choose two.)

- A.** Service profiles created from an updating service profile template do not inherit all the properties of the template and remain connected to the template. Any changes to the template must be propagated manually to the service profiles that are created from the template.
- B.** When using an initial service profile template, changes to the initial template automatically propagate to the bound service profiles.
- C.** With a service profile template, you can quickly create several service profiles with the same basic parameters, such as the number of vNICs and vHBAs, and with identify information drawn from the same pools.
- D.** A service profile template parameterizes the UIDs that differentiate one instance of an otherwise identical server from another. Templates can be categorized into two types: initial and updating.

**Answer: C,D (LEAVE A REPLY)**

### **NEW QUESTION: 38**

Which four issues are often detected when validating workflows in Cisco UCS Director? (Choose four.)

- A.** Task Handler not found
- B.** missing admin/task inputs after import or upgrade
- C.** mapping mismatch
- D.** version incompatibilities
- E.** debugging logging information
- F.** missing optional values for tasks
- G.** missing task action value
- H.** missing mandatory values for tasks

**Answer: (SHOW ANSWER)**

Explanation/Reference:

Reference: Section Workflow validation of the link: [http://www.cisco.com/c/en/us/td/docs/unified\\_computing/ucs/ucs-director/orchestration-guide/5-4/b\\_UCS\\_Director\\_Orchestration\\_Guide\\_5\\_4/b\\_UCS\\_Director\\_Orchestration\\_Guide\\_5\\_4\\_chapter\\_011.html](http://www.cisco.com/c/en/us/td/docs/unified_computing/ucs/ucs-director/orchestration-guide/5-4/b_UCS_Director_Orchestration_Guide_5_4/b_UCS_Director_Orchestration_Guide_5_4_chapter_011.html)

### **NEW QUESTION: 39**

Which configuration provides the highest performance level to Virtual Extensible LAN?

- A.** VxLAN in multicast mode with MAC distribution
- B.** VxLAN in unicast mode with VxLAN TSO offload in Cisco UCS
- C.** VxLAN in multicast mode with VxLAN TSO offload in Cisco UCS
- D.** VxLAN in unicast mode with MAC distribution and VxLAN TSO offload in Cisco UCS

**Answer: (SHOW ANSWER)**

### **NEW QUESTION: 40**

- A.** Create a usNIC connection policy, create a vNIC, set vNIC connection policy to usNIC, and install the usNIC RPM driver
- B.** Modify the vNIC network control policy to usNIC, modify usNIC Ethernet adapter policy, and install the usNIC RPM driver

**C.** Create a usNIC connection policy, create a vNIC, set vNIC adapter policy to Linux, and install the usNIC RPM driver

**D.** Create a vNIC, modify usNIC Ethernet adapter policy, set vNIC connection policy to usNIC, and install the usNIC RPM driver

**Answer: (SHOW ANSWER)**

Explanation/Reference:

Reference: [http://www.cisco.com/c/en/us/td/docs/unified\\_computing/ucs/sw/gui/config/guide/2-2/b\\_UCSM\\_GUI\\_Configuration\\_Guide\\_2\\_2/configuring\\_network\\_related\\_policies.pdf](http://www.cisco.com/c/en/us/td/docs/unified_computing/ucs/sw/gui/config/guide/2-2/b_UCSM_GUI_Configuration_Guide_2_2/configuring_network_related_policies.pdf)

### **NEW QUESTION: 41**

A Cisco UCS Director administrator is attempting to resolve a workflow validation issue. Which option lists the steps that accomplish this task?

**A.** On the menu bar, choose Policies > Orchestration.

Click the Activities tab.

Choose the workflow that failed validation.

Click Validate Workflow.

In the Workflow Validation dialog box, double click the description under Resolution.

In the Validation Errors dialog box, view the summary for the issue detected and complete the wizard to resolve the validation error.

**B.** On the menu bar, choose Policies > Catalogs.

Click the Workflows tab.

Choose the workflow that failed validation.

Click Validate Workflow.

In the Workflow Validation dialog box, double click the description under Resolution.

In the Validation Errors dialog box, view the summary for the issue detected and complete the wizard to resolve the validation error.

**C.** On the menu bar, choose Policies > Catalogs.

Click the Activities tab.

Choose the workflow that failed validation.

Click Validate Workflow.

In the Workflow Validation dialog box, double click the description under Resolution.

In the Validation Errors dialog box, view the summary for the issue detected and complete the wizard to resolve the validation error.

**D.** On the menu bar, choose Policies > Orchestration.

Click the Workflows tab.

Choose the workflow that failed validation.

Click Validate Workflow.

In the Workflow Validation dialog box, double click the description under Resolution.

In the Validation Errors dialog box, view the summary for the issue detected and complete the wizard to resolve the validation error.

**Answer: (SHOW ANSWER)**

**NEW QUESTION: 42**

Which is the step to associate an application profile EPG to a VMM domain?

- A. The APIC pushes the EPGs as virtual switches to the VM controller.
- B. The VMM administrator creates the port groups in the Tenant window then assigns the EPGs to CPPAs.
- C. The APIC pushes the EPGs as port groups in the VM controller.
- D. The policy administrator assigns the EPG to physical endpoints in the VMM.

**Answer: (SHOW ANSWER)**

Explanation/Reference:

Explanation:

Provisioning of EPGs in VMM Domain - Associates application profile EPGs to VMM domains as follows:  
The APIC pushes these EPGs as port groups in the VM controller. The compute administrator then places vNICs into these port groups.

An EPG can span multiple VMM domains, and a VMM domain can contain multiple EPGs.

**NEW QUESTION: 43**

With which three types of zoning can a Cisco UCS domain be configured? (Choose three.)

- A. cloud-based Fibre Channel zoning
- B. Cisco UCS local Fibre Channel zoning
- C. hybrid-based Fibre Channel zoning
- D. switch-based Fibre Channel zoning
- E. no zoning
- F. vBlock-based Fibre Channel zoning

**Answer: (SHOW ANSWER)**

Explanation/Reference:

Reference: [http://www.cisco.com/c/en/us/td/docs/unified\\_computing/ucs/sw/gui/config/guide/2-2/b\\_UCSM\\_GUI\\_Configuration\\_Guide\\_2\\_2/b\\_UCSM\\_GUI\\_Configuration\\_Guide\\_2\\_2\\_chapter\\_011011.pdf](http://www.cisco.com/c/en/us/td/docs/unified_computing/ucs/sw/gui/config/guide/2-2/b_UCSM_GUI_Configuration_Guide_2_2/b_UCSM_GUI_Configuration_Guide_2_2_chapter_011011.pdf)

**NEW QUESTION: 44**

Which three statements about context workflow mapping in Cisco UCS Director are true? (Choose three.)

- A. You can execute a workflow that contains a set of tasks from within a context of a component.
- B. Workflows cannot be mapped in the form of an action, nor can they be executed in the context of a component
- C. You have to browse for a required workflow in the workflow list to execute it
- D. Context workflow mapping consists of two stages:

Stage 1 - Create a context mapper task and add it to the workflow that must be mapped as an action

Stage 2 - Add the workflow to the content mapper list by giving in an action label

- E. Context workflow mapping consists of two stages:

Stage 1 - Create the workflow to the content mapper list by giving in an action label Stage 2 - Add a context mapper task to the workflow that must be mapped as an action

F. You can map a workflow in the form of an action and execute it in the context of the component Workflows cannot be executed at the component level

**Answer:** ([SHOW ANSWER](#))

Explanation/Reference:

Reference: [http://www.cisco.com/c/en/us/td/docs/unified\\_computing/ucs/ucs-director/orchestration-guide/5-0/b\\_UCS\\_Director\\_Orchestration\\_Guide\\_5\\_0/](http://www.cisco.com/c/en/us/td/docs/unified_computing/ucs/ucs-director/orchestration-guide/5-0/b_UCS_Director_Orchestration_Guide_5_0/)

[b\\_UCS\\_Director\\_Orchestration\\_Guide\\_5\\_0\\_chapter\\_0101.html#concept\\_3BA2EDADF4724218802E5CE3184B27A0](http://www.cisco.com/c/en/us/td/docs/unified_computing/ucs/ucs-director/orchestration-guide/5-0/b_UCS_Director_Orchestration_Guide_5_0_chapter_0101.html#concept_3BA2EDADF4724218802E5CE3184B27A0)

#### NEW QUESTION: 45

During which process are Cisco UCS UUID, MAC, and WWPN identifiers allocated from the pool?

- A. server boot time
- B. service profile template creation
- C. service profile assignment to a server
- D. service profile instantiation

**Answer:** ([SHOW ANSWER](#))

#### NEW QUESTION: 46

Which two statements describe Ethernet and vEthernet port profiles? (Choose two.)

- A. Ethernet port profiles are assigned to physical interfaces such as vmnics. vEthernet port profiles are assigned to virtual interfaces such as vNIC, vmk, or VTEP.
- B. vEthernet port profiles are assigned to physical interfaces such as vmnics. Ethernet port profiles are assigned to virtual interfaces such as vNIC, vmk, or VTEP.
- C. Ethernet port profiles may only be assigned to Cisco UCS unified ports when configured as type link.
- D. An MTU change is required on the Ethernet port profiles to support jumbo frames.

**Answer:** A,D ([LEAVE A REPLY](#))

**Valid 300-460 Dumps** shared by ExamDiscuss.com for Helping Passing 300-460 Exam!

ExamDiscuss.com now offer the **newest 300-460 exam dumps**, the ExamDiscuss.com 300-460 exam **questions have been updated** and **answers have been corrected** get the **newest**

ExamDiscuss.com 300-460 dumps with Test Engine here:

<https://www.examdiscuss.com/Cisco/exam/300-460/premium/> (132 Q&As Dumps, **35%OFF** Special

**Discount Code: freecram**)

#### NEW QUESTION: 47

Which two fields are needed for a Cisco UCS Director administrator to configure a WWN block? (Choose two.)


- A. the first WWNN or WWPN address in the block
- B. the WWN for the initiator
- C. a unique name for the initiator
- D. a unique name for the block
- E. the number of WWN or WWPN addresses in the block

**Answer:** ([SHOW ANSWER](#))

Explanation/Reference:

Explanation:

## Adding a WWN Block to a WWNN Pool

 **Important** A WWN pool can include only WWNNs or WWPNs in the ranges from 20:00:00:00:00:00:00 to 20:FF:FF:FF:FF:FF:FF or from 50:00:00:00:00:00:00 to 5F:FF:FF:FF:FF:FF:FF. All other WWN ranges are reserved. To ensure the uniqueness of the Cisco UCS WWNNs and WWPNs in the SAN fabric, Cisco recommends using the following WWN prefix for all blocks in a pool:  
20:00:00:25:B5:XX:XX:XX

---

**Procedure**

---

**Step 1** In the **Navigation** pane, click the **SAN** tab.

**Step 2** In the **SAN** tab, expand **SAN > Pools > Organization Name**.

**Step 3** Expand the **WWNN Pools** node.

**Step 4** Right-click the WWNN pool to which you want to add a WWN block and select **Create WWN Block**.

**Step 5** In the **Create WWN Block** dialog box, complete the following fields:

Name	Description
From field	The first WWN in the block.
Size field	The number of WWNs in the block. For WWxN pools, the pool size must be a multiple of <i>ports-per-node</i> + 1. For example, if there are 7 ports per node, the pool size must be a multiple of 8. If there are 63 ports per node, the pool size must be a multiple of 64.

### NEW QUESTION: 48

Which option describes the function of an initiator in Storage Area Networking?

- A. stats a connection over the fabric to one or more ports
- B. creates a connection over the fabric to one or more initiator ports
- C. provides a network infrastructure consisting of one or more Fibre Channel switches
- D. an endpoint that receives data in the SAN infrastructure

**Answer:** ([SHOW ANSWER](#))

### NEW QUESTION: 49

A Cisco UCS Director administrator is configuring vHBA. Which four fields are needed to configure vHBA?

(Choose four.)

- A. vHBA Name
- B. Adapter Policy
- C. Template Type
- D. Organizations
- E. Description
- F. Fabric ID
- G. UCS Organization Name
- H. UCS Account Name

**Answer:** ([SHOW ANSWER](#))

Explanation/Reference:

Reference: [http://www.cisco.com/c/en/us/td/docs/unified\\_computing/ucs/ucs-director/ucs-mgmt-guide/4-0/b\\_Cisco\\_UCS\\_Director\\_UCS\\_Management\\_Guide\\_40/b\\_Cisco\\_UCS\\_Director\\_UCS\\_Management\\_Guide\\_40\\_chapter\\_0101.html#concept\\_930C11B6473846DDA5F7F25E88EC8F33](http://www.cisco.com/c/en/us/td/docs/unified_computing/ucs/ucs-director/ucs-mgmt-guide/4-0/b_Cisco_UCS_Director_UCS_Management_Guide_40/b_Cisco_UCS_Director_UCS_Management_Guide_40_chapter_0101.html#concept_930C11B6473846DDA5F7F25E88EC8F33)

#### **NEW QUESTION: 50**

- A. the IP address of the NFS server where you plan to store the OS images for Bare Metal Agent to use
- B. the locate and organization where the NFS server is located
- C. the IP address of the IP share storage system
- D. the location of the NFS server where the OS images are stored

**Answer:** ([SHOW ANSWER](#))

Explanation/Reference:

Reference: [http://www.cisco.com/c/en/us/td/docs/unified\\_computing/ucs/ucs-director/bma-install-config/5-2/b\\_ucsd\\_bma\\_install\\_config\\_guide\\_5\\_2/b\\_ucsd\\_bma\\_install\\_config\\_guide\\_5\\_2\\_chapter\\_0110.html#task\\_FB4A6403CF4F4650B31A8C2C6FF4E69F](http://www.cisco.com/c/en/us/td/docs/unified_computing/ucs/ucs-director/bma-install-config/5-2/b_ucsd_bma_install_config_guide_5_2/b_ucsd_bma_install_config_guide_5_2_chapter_0110.html#task_FB4A6403CF4F4650B31A8C2C6FF4E69F)

#### **NEW QUESTION: 51**

Where does performance tuning of high CPU utilization take place in Cisco UCS?

- A. high performance policy
- B. BIOS policy
- C. compute policy
- D. energy performance mode policy

**Answer:** ([SHOW ANSWER](#))

#### **NEW QUESTION: 52**

A Cisco UCS Director administrator is charging the boot . Which option lists the steps that accomplish this task?

- A. On the menu bar, choose Physical > Storage.

In the left pane, expand the pod and then click the Cisco UCS Manager account In the right pane, click the Organizations tab

Click the organization in which you want to modify a policy and then click View details Click the Manage Boot Order tab.

Choose the boot policy that you want to clone and click Manage Boot Order

**B.** On the menu bar, choose Physical > Compute.

In the left pane, expand the pod and then click the Cisco UCS Manager account In the right pane, click the Organizations tab

Click the organization in which you want to modify a policy and then click View details Click the Manage Boot Order tab.

Choose the boot policy that you want to clone and click Manage Boot Order

**C.** On the menu bar, choose Physical > Storage.

In the left pane, expand the pod and then click the Cisco UCS Manager account In the right pane, click the Organizations tab

Click the organization in which you want to modify a policy and then click View details Click the Boot Policies tab.

Choose the boot policy that you want to clone and click Manage Boot Devices Order

**D.** On the menu bar, choose Physical > Compute.

In the left pane, expand the pod and then click the Cisco UCS Manager account In the right pane, click the Organizations tab

Click the organization in which you want to modify a policy and then click View details Click the Boot Policies tab.

Choose the boot policy that you want to clone and click Manage Boot Devices Order

**Answer: (SHOW ANSWER)**

Explanation/Reference:

Reference: [http://www.cisco.com/c/en/us/td/docs/unified\\_computing/ucs/ucs-director/ucs-central-mgmt-guide/4-1/b\\_Cisco\\_UCS\\_Director\\_UCSCentral\\_Mgmt\\_Guide\\_41/](http://www.cisco.com/c/en/us/td/docs/unified_computing/ucs/ucs-director/ucs-central-mgmt-guide/4-1/b_Cisco_UCS_Director_UCSCentral_Mgmt_Guide_41/)

[b\\_Cisco\\_UCS\\_Director\\_UCSCentral\\_Mgmt\\_Guide\\_41\\_chapter\\_0111.html#concept\\_2313A9F59CD94237819D14A3CA608DFD](http://www.cisco.com/c/en/us/td/docs/unified_computing/ucs/ucs-director/ucs-central-mgmt-guide/4-1/b_Cisco_UCS_Director_UCSCentral_Mgmt_Guide_41_chapter_0111.html#concept_2313A9F59CD94237819D14A3CA608DFD)

### **NEW QUESTION: 53**

A Cisco UCS Director administrator is viewing the status of his pod on the Virtual > Compute tab. Which three tabs are available under this menu& (Choose three.)

**A.** VM Chargeback

**B.** vDCs

**C.** Resource Pools

**D.** VM Reservations

**E.** VMs

**F.** Service Requests

**Answer: (SHOW ANSWER)**

**NEW QUESTION: 54**

A Cisco UCS Director administrator is creating a VSAN. Which two types of VSANs are available? (Choose two.)

- A. storage cloud
- B. storage hybrid
- C. SAN cloud
- D. SAN

**Answer:** ([SHOW ANSWER](#))

**NEW QUESTION: 55**

Which three statements about server pools are true? (Choose three.)

- A. Cisco USC Director Displays only the managed servers in a server pool, but the size of the pool includes all servers.
- B. Servers pools cannot be assigned to a Cisco USC Director group.
- C. A given server can belong only to a specific server pool.
- D. A server pool contains a set of servers that share the same attributes such as server type, amount of memory, local storage, type of CPU, or local drive configuration.
- E. A server pool only includes servers from a specific chassis in the system.
- F. If your system implements multitenancy through organizations, you can designate one or more server pools to be used by a specific organization.

**Answer:** ([SHOW ANSWER](#))

Explanation/Reference:

Reference: [http://www.cisco.com/c/en/us/td/docs/unified\\_computing/ucs/ucs-director/ucs-mgmt-guide/4-0/b\\_Cisco\\_UCS\\_Director\\_UCS\\_Management\\_Guide\\_40/b\\_Cisco\\_UCS\\_Director\\_UCS\\_Management\\_Guide\\_40\\_chapter\\_0110.html](http://www.cisco.com/c/en/us/td/docs/unified_computing/ucs/ucs-director/ucs-mgmt-guide/4-0/b_Cisco_UCS_Director_UCS_Management_Guide_40/b_Cisco_UCS_Director_UCS_Management_Guide_40_chapter_0110.html)

**NEW QUESTION: 56**

An administrator is troubleshooting basic connectivity between two Fibre Channel points that include node hops and latency data. Which tool is the best for troubleshooting this scenario?

- A. ping
- B. fctraceroute
- C. traceroute
- D. fcping

**Answer:** ([SHOW ANSWER](#))

Explanation/Reference:

Explanation:

Ping and traceroute are two of the most useful tools for troubleshooting TCP/IP networking problems. The ping utility generates a series of echopackets to a destination across a TCP/IP internetwork. When the echo packets arrive at the destination, they are rerouted and sent back to the source. Using ping, you can verify connectivity and latency to a particular destination across an IP routed network.

The traceroute utility operates in a similar fashion, but can also determine the specific path that a frame takes to its destination on a hop-by-hop basis.

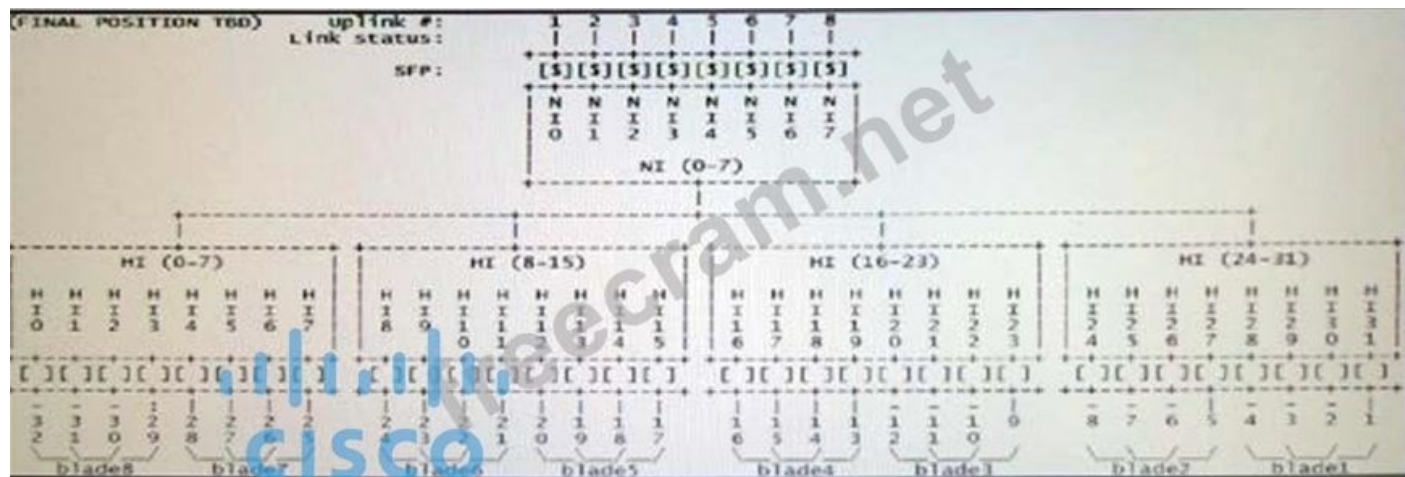
**NEW QUESTION: 57**

Which option lists the steps to configure a Cisco UCS B-Series server for jumbo frames and the Cisco Discovery Protocol?

- A.** On the LAN tab, create a vHBA template with an MTU of 9216.  
Select the CDP checkbox.  
Assign the network control policy to the vHBA.
- B.** On the LAN tab, create a network control policy with CDP enabled.  
Create a vNIC with an MTU of 9000.  
Assign the network control policy to the vNIC.
- C.** On the Servers tab, set CDP enabled under the vNIC interface.  
Set the vHBA MTU to 9000.  
Assign the network control policy to the vHBA.
- D.** On the Servers tab, create a network control policy with CDP enabled.  
On the vNIC select the jumbo-frame checkbox.  
Assign the network control policy to the vNIC.

**Answer:** [\(SHOW ANSWER\)](#)

**NEW QUESTION: 58**



Refer to the exhibit. Which set of commands results in this output?

- A.** connect nxos  
show system internal port-map
- B.** connect iom 1  
show platform software woodside sts
- C.** show service-profile circuit detail
- D.** connect nxos b  
show system internal woodside sts

**Answer:** [\(SHOW ANSWER\)](#)

**Valid 300-460 Dumps** shared by ExamDiscuss.com for Helping Passing 300-460 Exam!  
ExamDiscuss.com now offer the **newest 300-460 exam dumps**, the ExamDiscuss.com 300-460 exam **questions have been updated** and **answers have been corrected** get the **newest** ExamDiscuss.com 300-460 dumps with Test Engine here:  
<https://www.examdiscuss.com/Cisco/exam/300-460/premium/> (**132** Q&As Dumps, **35%OFF** Special Discount Code: **freecram**)