

Cisco.300-420.v2021-08-04.q31

Exam Code:	300-420
Exam Name:	Designing Cisco Enterprise Networks
Certification Provider:	Cisco
Free Question Number:	31
Version:	v2021-08-04
# of views:	731
# of Questions views:	9882
https://www.freecram.net/torrent/Cisco.300-420.v2021-08-04.q31.html	

NEW QUESTION: 1

Which routes does the overlay management protocol advertise in an SD-WAN overlay?

- A. prefix, TLOC, and service
- B. Internet, MPLS, and backup
- C. underlay, MPLS, and overlay
- D. primary, backup, and load-balanced

Answer: ([SHOW ANSWER](#))

NEW QUESTION: 2

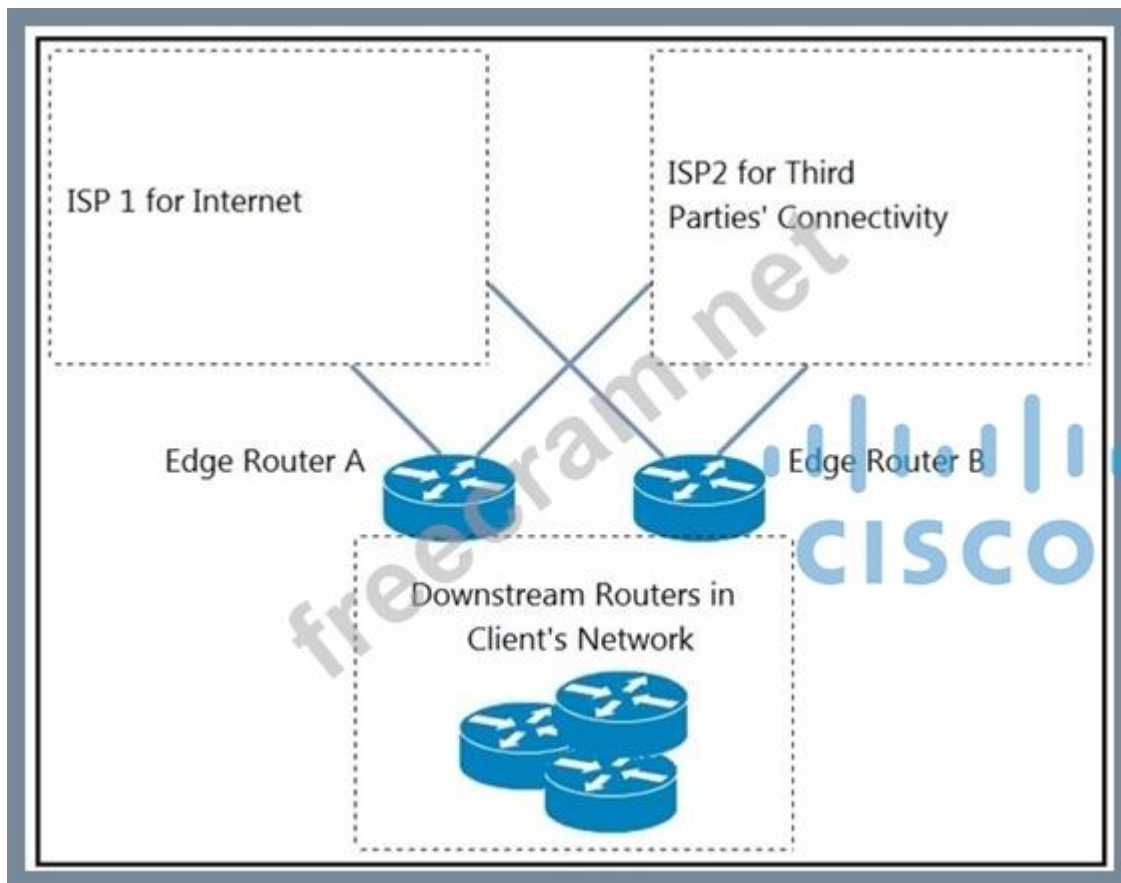
When a network is designed using IS-IS protocol, which two circuit types are supported? (Choose two.)

- A. nonbroadcast
- B. nonbroadcast multiaccess
- C. multiaccess
- D. point-to-multipoint
- E. point-to-point

Answer: ([SHOW ANSWER](#))

NEW QUESTION: 3

Refer to the exhibit.



An engineer is designing a BGP solution for a client that peers with ISP1 for full Internet connectivity and with ISP2 for direct exchange of routes for several third parties. Which action, when implemented on the edge routers, enables the client network to reach the Internet through ISP1?

- A. Advertise a default route for downstream routers within the client network.
- B. Apply the AS-path prepend feature for ISP2.
- C. Apply route filtering such that the client advertises only routes originated from its own AS.
- D. Run an eBGP session within different VRFs for each ISP.

Answer: ([SHOW ANSWER](#))

NEW QUESTION: 4

A customer with an IPv4 only network topology wants to enable IPv6 connectivity while preserving the IPv4 topology services. The customer plans to migrate IPv4 services to the IPv6 topology, then decommission the IPv4 topology. Which topology supports these requirements?

- A. 6VPE
- B. NAT64
- C. dual stack
- D. 6to4

Answer: ([SHOW ANSWER](#))

NEW QUESTION: 5

Which consideration must be taken into account when using the DHCP relay feature in a Cisco SD-Access Architecture?

- A. DHCP servers must support Cisco SD-Access extensions to correctly assign IPs to endpoints in an SDAccess fabric with anycast gateway.
- B. DHCP Option-82 must be enabled to map the circuit IP option to the access fabric node where the DHCP discover originated.
- C. A DHCP server must be enabled on the border nodes to allow subnets to span multiple fabric edges.
- D. DHCP-relay must be enabled on fabric edge nodes to provide the correct mapping of DHCP scope to the local anycast gateway.

Answer: ([SHOW ANSWER](#))

NEW QUESTION: 6

An engineer is working for a large cable TV provider that requires multiple sources streaming video on different channels using multicast with no rendezvous point. Which multicast protocol meets these requirements?

- A. PIM-SM
- B. BIDIR-PIM
- C. any-source multicast
- D. PIM-SSM

Answer: ([SHOW ANSWER](#))

NEW QUESTION: 7

A network engineer is redesigning a company's QoS solution. The company is currently using IP Precedence, but the engineer plans to move to DiffServ. It is important that the new solution provide backward compatibility with the current solution. Which technology should the design include?

- A. class selector code points
- B. assured forwarding
- C. expedited forwarding
- D. default per hop behavior

Answer: ([SHOW ANSWER](#))

NEW QUESTION: 8

A company with multiple service providers wants to speed up BGP convergence time in the event a failure occurs with their primary link. Which approach achieves this goal and does not impact router CPU utilization?

- A. Decrease the BGP keepalive timer
- B. Utilize BFD and tune the multiplier to 50
- C. Utilize BFD and keep the default BGP timers
- D. Lower the BGP hello interval

Answer: ([SHOW ANSWER](#))

NEW QUESTION: 9

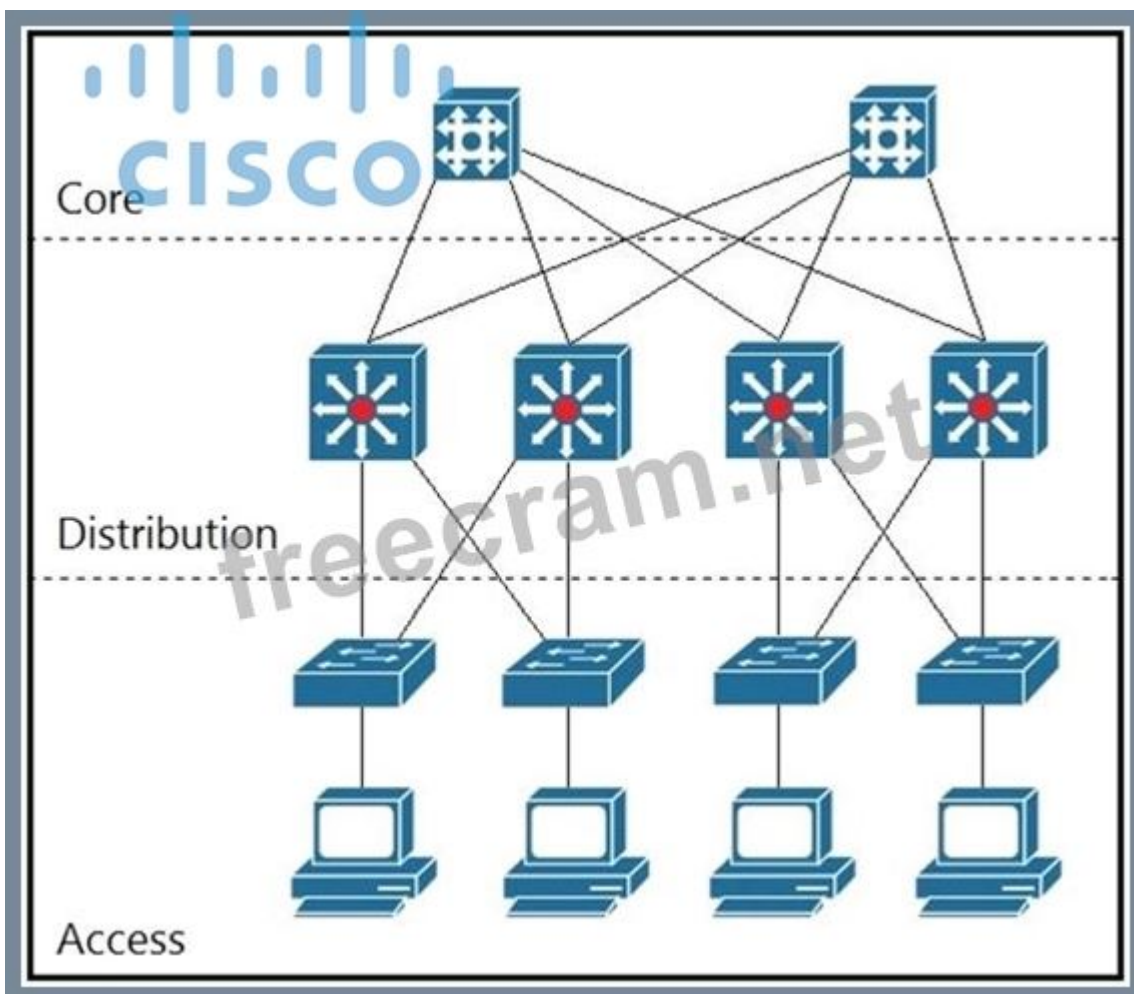
What is an advantage of designing an out-of-band network management solution?

- A. There is no separation between the production network and the management network.
- B. It is less expensive than an in-band management solution
- C. In the event of a production network outage, network devices can still be managed.
- D. In the event of a production network outage, it can be used as a backup network path.

Answer: ([SHOW ANSWER](#))

NEW QUESTION: 10

Refer to the exhibit.



Which two solutions maximize the use of the links between the core and distribution layers?

(Choose two.)

- A. use multiple unequal-cost links
- B. use RPVSTP+
- C. use multiple equal-cost links
- D. use HSRP
- E. use an IGP

Answer: ([SHOW ANSWER](#))

NEW QUESTION: 11

Which design consideration must be made when dual vEdge routers are deployed at a branch site?

- A. Configure BFD between vEdge routers to detect sub-second link failures.
- B. HSRP priorities must match the OMP routing policy to prefer one vEdge over the other.
- C. Use BGP AS-path prepending to influence egress traffic and use MED to influence ingress traffic from the branch.
- D. Traffic must be symmetrical as it egresses the vEdges and returns from remote sites for DPI to function properly.

Answer: ([SHOW ANSWER](#))

NEW QUESTION: 12

An architect is creating a migration strategy for a large organization in which the choice made by the application between IPv6 and IPv4 is based on the DNS request. Which migration strategy does the architect choose?

- A. AFT for public web presence
- B. host-initiated tunnels
- C. site-to-site IPv6 over IPv4 tunnels
- D. dual stack

Answer: ([SHOW ANSWER](#))

NEW QUESTION: 13

Which two best practices must be followed when designing an out-of-band management network? (Choose two.)

- A. Enforce access control
- B. Ensure network isolation
- C. Ensure that the management network is a backup to the data network
- D. Back up data using the management network
- E. Facilitate network integration

Answer: ([SHOW ANSWER](#))

NEW QUESTION: 14

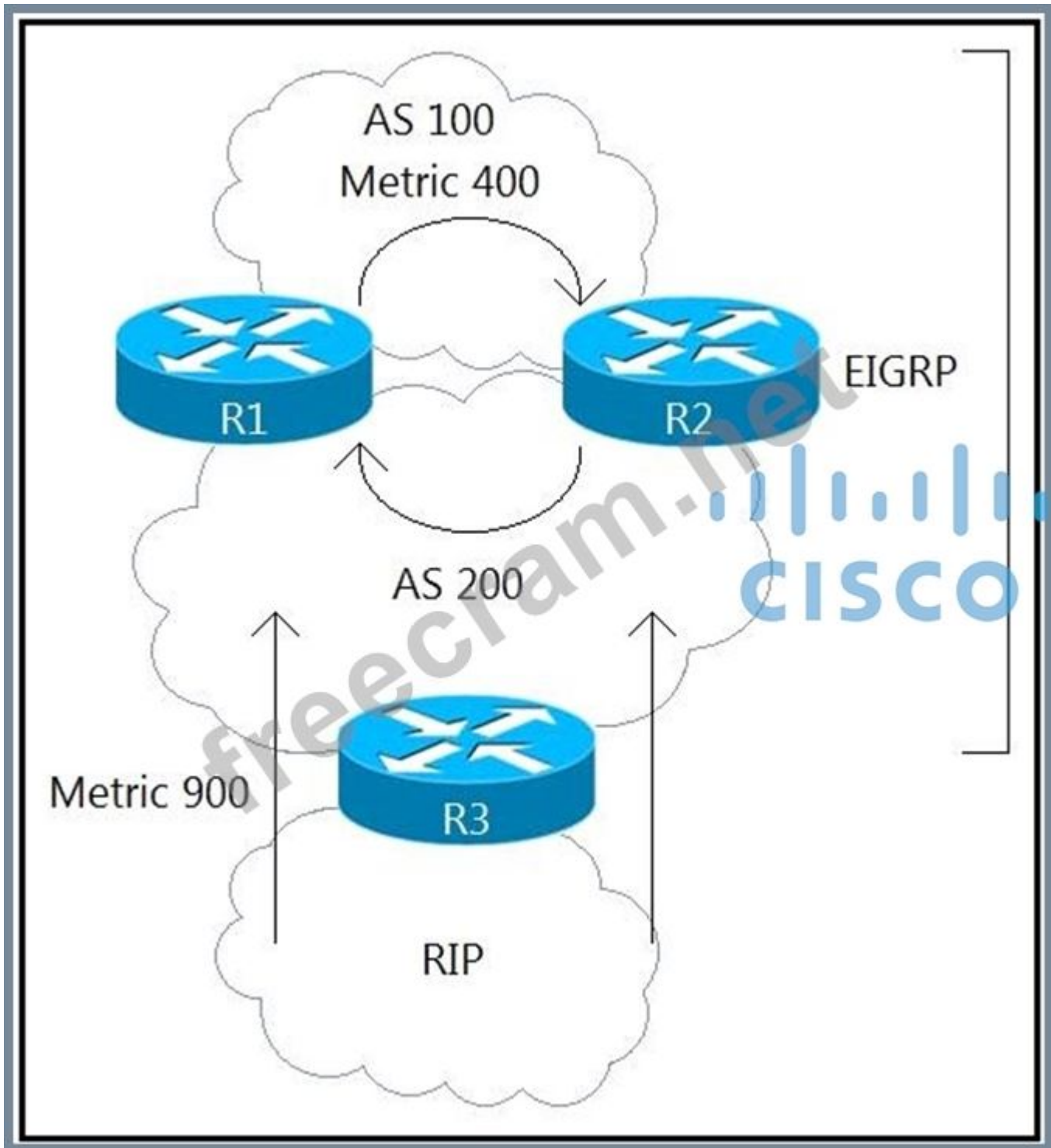
How is sub-second failure of a transport link detected in a Cisco SD-WAN network?

- A. BFD runs on the IPsec tunnels between WAN Edge routers.
- B. Link state change messages are sent between vSmart controllers.
- C. Hellos are sent between the WAN Edge routers and the vSmart controller.
- D. BGP is used between WAN Edge routers and the vSmart controller.

Answer: ([SHOW ANSWER](#))

NEW QUESTION: 15

Refer to the exhibit.



An architect must design a solution to connect the network behind R3 with the EIGRP network. Which mechanism should be included to avoid routing loops?

- A. down bit
- B. split horizon
- C. route tags
- D. summarization

Answer: ([SHOW ANSWER](#))

NEW QUESTION: 16

An engineer must design a scalable QoS architecture that allows the separation of the traffic into classes on predefined business requirements. The design must also utilize the differentiated services code points as the QoS priority descriptor value and support at least 10 levels of classification. Which QoS technology should the engineer include in the design?

- A. InterServ
- B. DiffServ
- C. Best Effort
- D. RSVP

Answer: B ([LEAVE A REPLY](#))

Valid 300-420 Dumps shared by ExamDiscuss.com for Helping Passing 300-420 Exam! ExamDiscuss.com now offer the **newest 300-420 exam dumps**, the ExamDiscuss.com 300-420 exam **questions have been updated** and **answers have been corrected** get the **newest** ExamDiscuss.com 300-420 dumps with Test Engine here:

<https://www.examdiscuss.com/Cisco/exam/300-420/premium/> (341 Q&As Dumps, **35%OFF**

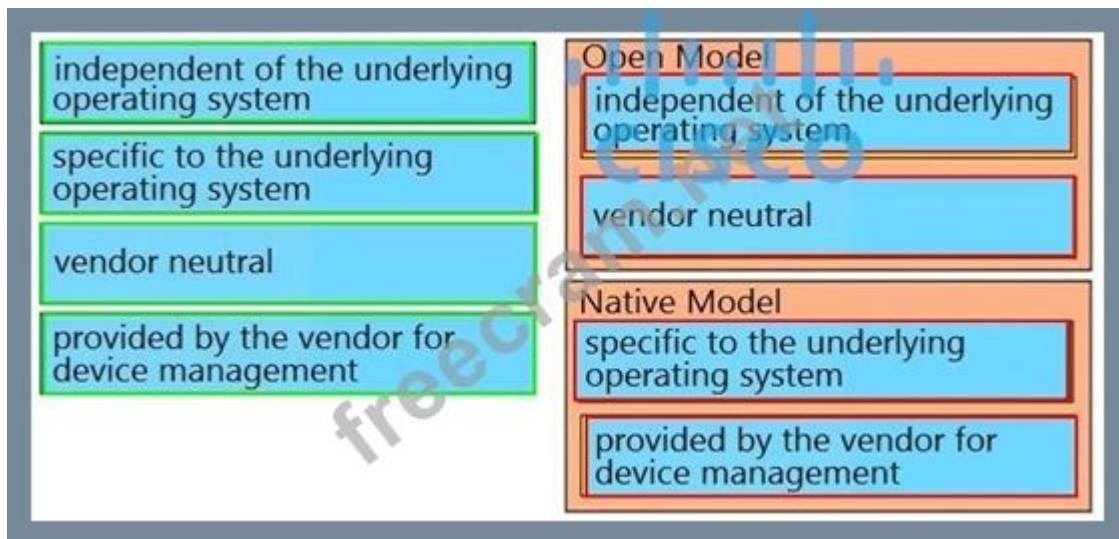
Special Discount Code: **freecram**)

NEW QUESTION: 17

Drag and drop the characteristics from the left onto the Yang model they describe on the right.

independent of the underlying operating system	Open Model
specific to the underlying operating system	
vendor neutral	
provided by the vendor for device management	Native Model

Answer:



NEW QUESTION: 18

What are two benefits of designing an SD-WAN network fabric with direct Internet access implemented at every site? (Choose two.)

- A. It alleviates network traffic on MPLS circuits.
- B. It decreases latency to applications hosted by public cloud service provider.
- C. It increases the total available bandwidth on Internet circuits.
- D. It decreases latency on Internet circuits.
- E. It increases the speed of delivery of site deployments through zero-touch provisioning.

Answer: ([SHOW ANSWER](#))

NEW QUESTION: 19

Which feature must be incorporated into the campus LAN design to enable Wake on LAN?

- A. directed broadcasts on layer 3 devices
- B. dynamic ARP Inspection Snooping on layer 2 devices
- C. DHCP Snooping on layer 2 devices
- D. proxy ARP on layer 3 devices

Answer: ([SHOW ANSWER](#))

NEW QUESTION: 20

A company is running BGP on a single router, which has two connections to the same ISP. Which BGP feature ensures traffic is load balanced across the two links to the ISP?

- A. Multihop
- B. Next-Hop Address Tracking
- C. AS-Path Prepending
- D. Multipath Load Sharing

Answer: ([SHOW ANSWER](#))

NEW QUESTION: 21

An architect is designing a multicast solution for a network that contains over 100 routers. The architect plans to create several multicast domains and balance the PIM-SM traffic within the network. Which technology should the architect include in the design?

- A. IGMP
- B. MSDP
- C. DVMRP
- D. MOSPF

Answer: ([SHOW ANSWER](#))

NEW QUESTION: 22

An engineer is designing a Layer 3 campus network running EIGRP between the core, aggregation, and access layers. The access layer switches will be connected to the aggregation layer using Layer 3 copper connections. The engineer wants to improve convergence time for access layer switch failures. Which technique must the design include?

- A. EIGRP summarization from core to aggregation layer
- B. EIGRP summarization from access to aggregation layer
- C. enabling BFD for EIGRP on the access layer uplinks
- D. reducing the EIGRP Hello / Hold timer values

Answer: ([SHOW ANSWER](#))

NEW QUESTION: 23

An architect is designing a network that will utilize the spanning tree protocol to ensure a loop-free topology. The network will support an engineering environment where it is necessary for end users to connect their own network switches for testing purposes. Which feature should the architect include in the design to ensure the spanning tree topology is not affected by these rogue switches?

- A. root guard
- B. BPDU guard
- C. BPDU Skew Detection
- D. loop guard

Answer: ([SHOW ANSWER](#))

NEW QUESTION: 24

Which two options can you use to configure an EIGRP stub router? (Choose two)

- A. not-so-stubby
- B. receive-only
- C. summary
- D. summary-only
- E. totally-stubby
- F. external

Answer: ([SHOW ANSWER](#))

NEW QUESTION: 25

An infrastructure team is concerned about the shared memory utilization of a device, and for this reason, they need to monitor the device state. Which solution limits impact on the device and provides the required data?

- A. static telemetry
- B. periodic subscription
- C. IPFIX
- D. on-change subscription

Answer: ([SHOW ANSWER](#))

NEW QUESTION: 26

Which two statements about VRRP object tracking are true? (Choose two)

- A. VRRP can track the status of interfaces and routes
- B. VRRP supports only interce tracking
- C. The VRRP interface priority must be manually configured by the administrator
- D. A VRRP group can track only one object at a time
- E. The priority of a VRRP device can change in accordance with the up or down status of a VRRP object

Answer: ([SHOW ANSWER](#))

NEW QUESTION: 27

An engineer is designing an EIGRP network for a small branch site where there is only one Layer 3 router. The engineer wants the router to advertise the local LAN network to remote EIGRP neighbors without sending any unnecessary multicast messages on the local LAN. Which action should the engineer take?

- A. Advertise the local LAN subnet as a stub network
- B. Redistribute the local LAN network using the redistribute connected command
- C. Advertise the local LAN using the network command and the passive-interface feature
- D. Use a static default route for this site instead of EIGRP

Answer: ([SHOW ANSWER](#))

NEW QUESTION: 28

An engineer must design a solution to provide backup connectivity between two sites. The engineer plans to use an Internet connection but company policy requires the connection to be encrypted. Additionally, there are several applications that utilize multicast to deliver video streams between the sites. Which technology should the design include?

- A. GETVPN
- B. DMVPN
- C. IPsec direct encapsulation
- D. GRE over IPsec

Answer: ([SHOW ANSWER](#))

NEW QUESTION: 29

An engineer is working with NETCONF and Cisco NX-OS based devices. The engineer needs a YANG model that supports a specific feature relevant only to Cisco NX-OS. Which model must the engineer choose?

- A. IEEE
- B. OpenConfig
- C. Native
- D. IETF

Answer: ([SHOW ANSWER](#))

NEW QUESTION: 30

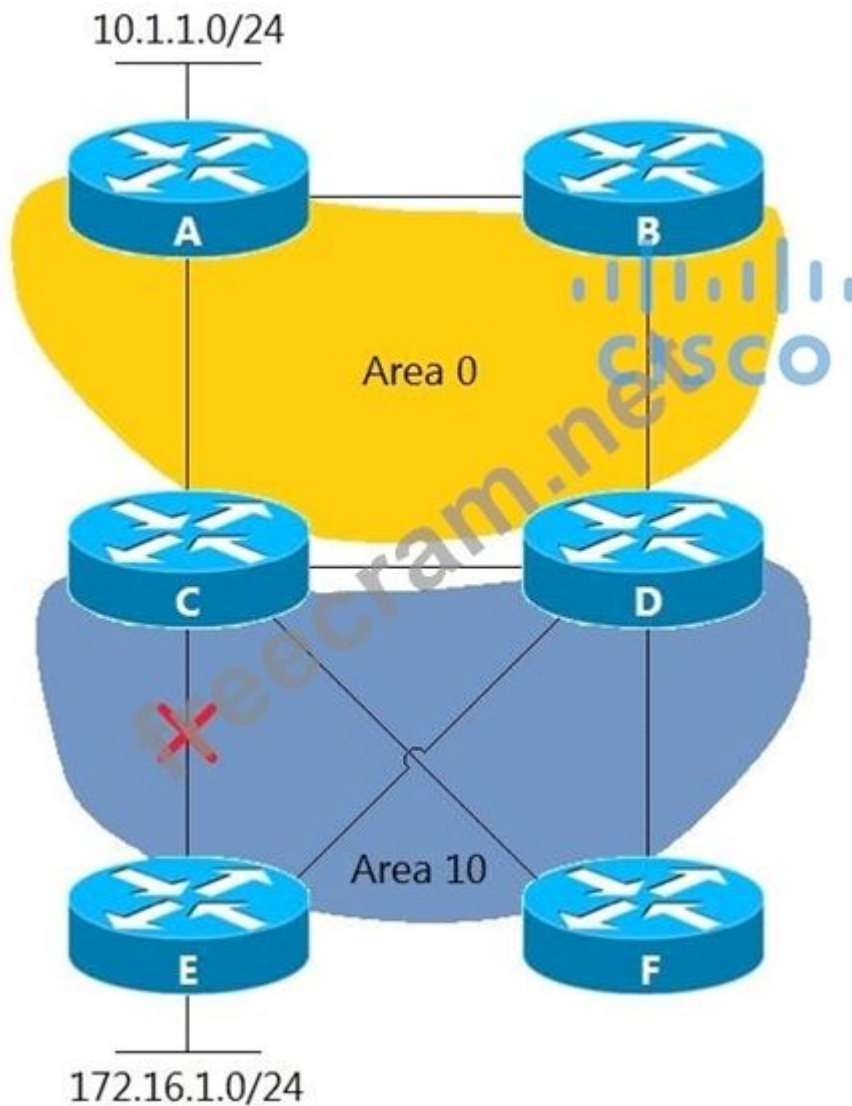
Which two statements describe source trees in a multicast environment? (Choose two.)

- A. Source trees can create suboptimal paths between the source and the receivers
- B. Source trees create an optimal path between the source and the receivers
- C. Source trees guarantee the minimum amount of network latency for forwarding multicast traffic
- D. Source trees use a single common root placed at some chosen point in the network
- E. Source trees can introduce latency in packet delivery

Answer: ([SHOW ANSWER](#))

NEW QUESTION: 31

Refer to the exhibit.



Area 10 is a regular OSPF area and networks 10.1.1.0/24 and 172.16.1.0/24 are internal. Which design provides optimal routing between both networks when the link between routers C and E fails?

- A. Make area 10 a not-so-stubby area.
- B. Create a tunnel between routers E and F in area 10.
- C. Create an OSPF virtual link between routers E and F.
- D. Move the link between routers C and D to area 10.

Answer: ([SHOW ANSWER](#))

Valid 300-420 Dumps shared by ExamDiscuss.com for Helping Passing 300-420 Exam! ExamDiscuss.com now offer the **newest 300-420 exam dumps**, the ExamDiscuss.com 300-420 exam **questions have been updated** and **answers have been corrected** get the **newest** ExamDiscuss.com 300-420 dumps with Test Engine here:

<https://www.examdiscuss.com/Cisco/exam/300-420/premium/> (341 Q&As Dumps, **35%OFF**)

Special Discount Code: **freecram**)

Valid 300-420 Dumps shared by ExamDiscuss.com for Helping Passing 300-420 Exam!
ExamDiscuss.com now offer the **newest 300-420 exam dumps**, the ExamDiscuss.com
300-420 exam **questions have been updated** and **answers have been corrected** get the
newest ExamDiscuss.com 300-420 dumps with Test Engine here:

<https://www.examdiscuss.com/Cisco/exam/300-420/premium/> (**341** Q&As Dumps, **35%OFF**

Special Discount Code: freecram)